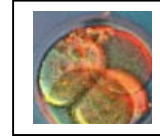


BIOLOGY



- *WHAT CAN I DO WITH MY MAJOR IN BIOLOGY?
- *WHAT CAN I DO TO MAKE MYSELF MORE MARKETABLE?
- *WHERE CAN I FIND CAREER INFORMATION?

• CAREER PLANNING • SUNY POTSDAM • 106 SISSON
HOMEPAGE: www.potsdam.edu/career TEL: 315-267-2344

WHAT CAN I DO WITH A MAJOR IN BIOLOGY?

1. Study all aspects of living organisms, including the relationship of animals, plants, insects and microbes to their environment.
2. Apply multi-disciplinary scientific knowledge to the understanding of the ocean, its movement, its interaction with the atmosphere, life within it and the solid earth beneath it.
3. Study chemical/molecular composition and behavior of cells and their compounds.
4. Repair and maintain biomedical equipment.
5. Perform tests to find harmful or disease-causing microorganisms in water, food, or the environment.

EXAMPLES OF FIELDS OF EMPLOYMENT FOR BIOLOGY MAJORS:

1. Laboratory
2. Government Agencies
3. Research Organizations
4. Consulting Firms
5. Pharmaceutical Firms
7. Academia
8. Nurseries, parks, botanical gardens
9. Zoos
10. Veterinary Clinics
11. Publishers, Scientific Material
13. Public Health
14. Manufacturing

SAMPLE JOB TITLES OF SUNY POTSDAM ALUMNI:

- * Optometrist
- * Teacher
- * Lab Technician/Microbiology
- * Veterinarian
- * Toxicology Technician
- * Pharmacist
- * Physical Therapist
- * Physician
- * Environmental Scientist
- * Cytotechnologist
- * Medical Technician
- * Pharmaceutical Research
- * Respiratory Therapist
- * Chiropractor

SAMPLE JOB DESCRIPTIONS:

1. Biochemist: studies the chemical composition and behavior of living things. May study the effects of food, hormones, or drugs on various organisms.
2. Environmental Educator: develops, plans, and teaches environmental educational curriculum to foster public awareness of and concern for the earth.
3. Pharmacologist: studies the effects of drugs, gases, powders, and other materials on the tissues and physiological processes of humans and animals.
4. Environmental Researchers: studies the ties between living organisms and the environment by conducting laboratory studies, doing fieldwork, and helping develop life-sustaining measures that will preserve and protect the environment.

ENHANCING EMPLOYABILITY:

1. Get involved in the career development process early, freshman year.
2. Select minors/elective courses that will demonstrate interest/applicability to your career objective.
3. Get career related experience: INTERNSHIPS, summer and/or part-time employment, volunteer. Join a career related association or organization.
4. Develop the following job search and self-marketing skills: resume and cover letter writing, portfolio development, researching employers, interviewing, networking, and employment searching.
5. Skills to develop: research and computer, interpretation or translation of collected data, persuasive writing, and presentation skills. A major in a closely related field may increase skills, i.e. chemistry, physics, or environmental.

SAMPLE INTERNSHIP EXPERIENCES:

- * Anderson Orthopedic Research Institute
 - Conducts medical research in orthopedics and rheumatology.
 - Interns will work as a laboratory research assistants.
- * March of Dimes Campaign for Healthier Babies, National Capital Area
 - Works to prevent infant mortality, low birth weight, and birth defects through public and professional health education, advocacy, and medical services.
 - Intern will assist with fundraising and special events, communications and media relations, program development, grants administration, public speaking, etc.

STRATEGIES FOR CONTACTING EMPLOYERS:

- * write an employer targeted resume and cover letter
- * network
- * learn job search strategies
- * use SUNY College at Potsdam's Career Planning reference books
- * prepare for the interview
- * design a portfolio
- * develop networking cards
- * use SUNY College at Potsdam's Career Planning Internet Homepage

SOME EMPLOYERS OF SUNY COLLEGE OF POTSDAM BIOLOGY ALUMNI:

- * Northeastern Eye Institute
- * State of Washington
- * North Bangor Veterinarian Clinic
- * Glaxo Inc.
- * Kinney Drugs
- * John Hopkins Hospital
- * Syracuse City School District
- * G.C. Hanford Manufacturing Co.
- * Wyeth-Ayerst Research
- * Idaho Dept. of Fish and Game
- * Sterilization Technical Services
- * Eastside Chiropractic

WHERE TO GET INFORMATION AND ASSISTANCE:

1. BIOLOGY DEPT., SUNY College at Potsdam, 208 Stowell Hall

- * talk with faculty

2. CAREER PLANNING CENTER, SUNY College at Potsdam, 106 Sisson Hall

- * individual career assistance
- * workshops/seminars
- * employer literature
- * SUNYCDO Job Fair
- * computerized assessment programs
- * career testing
- * networking assistance
- * free handouts available
- * Employment Connection
- * job vacancies
- * summer jobs
- * reference file
- * career fairs
- * Career Planning Internet Homepage
- * career library
- * alumni contacts
- * Virtual Job Fair

WHAT IF I WANT TO GO TO GRADUATE SCHOOL?

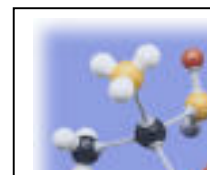
RESOURCES AVAILABLE AT THE CAREER PLANNING CENTER:

- * graduate school handout
- * GRE, GMAT, MCAT, LSAT and MAT forms and bulletins (GRE computerized tests and graduate study books)
- * graduate books-schools and programs
- * financial aid information about graduate school
- * Peterson's Graduate Programs (G7F,G,H,I,J,K)

RESOURCES FOR FINDING EMPLOYERS:

RESOURCES AVAILABLE AT THE CAREER PLANNING CENTER:

- * The Career Guide Employment Opportunities Directory (R8GG)
- * Job Hunter's Sourcebook (R26D)
- * Dun's Regional Directories (R8I, R8J, R8K)
- * The New Careers Directory (I2G)
- * Summer Jobs for Students (S2A)
- * Job Opportunities in Health Care (R17A)
- * American Hospital Association: Guide to Health Care Field (R17B)
- * Peterson's Job Opportunities in Engineering & Technical Fields (R45D)
- * Scientific and Technical Organizations & Agencies Directories (R45E, R45F)
- * Career Planning Internet Homepage
- * Additional material found by using Career Planning Library Bibliography



OTHER SOURCES OF INFORMATION:

- | | |
|---|--|
| * The American Institute of Biological Sciences
730 11th St., NW
Washington, DC 20001-4584
(202) 628-1500 | * Int'l Oceanographic Foundation
4600 Rickenbacher Causeway
Miami, FL 33149
(305) 361-4888
Fax: (305) 361-4711 |
| * American Society for Biochemistry and Molecular Biology
9650 Rockville Pike
Bethesda, MD 20814-3996
(301) 530-7145 | * Association for Advancement of Medical Instrumentation
3330 Washington Blvd., Suite 400
Arlington, VA 22201-4598
(703) 525-4890 |

