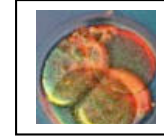


BIOLOGY



- *WHAT CAN I DO WITH MY MAJOR IN BIOLOGY?
- *WHAT CAN I DO TO MAKE MYSELF MORE MARKETABLE?
- *WHERE CAN I FIND CAREER INFORMATION?

• **CAREER PLANNING**

• **SUNY POTSDAM**

• **206 SISSON**

Web Site: www.potsdam.edu/offices/career

TEL: 315-267-2344

WHAT CAN I DO WITH A MAJOR IN BIOLOGY?

1. Study all aspects of living organisms, including the relationship of animals, plants, and microbes to their environment.
2. Study chemical/molecular composition and behavior of cells and their compounds.
3. Perform tests to find harmful or disease-causing microorganisms in water, food, or the environment.
4. Prepare for professional programs in life sciences, including health-related careers.

EXAMPLES OF FIELDS OF EMPLOYMENT FOR BIOLOGY MAJORS:

1. Laboratories
2. Government Agencies
3. Research Organizations
4. Consulting Firms
5. Pharmaceutical Firms
6. Academia
7. Hospitals
8. Nurseries, Parks, Botanical Gardens
9. Zoos
10. Veterinary Clinics
11. Publishers, Scientific Material
12. Public Health
13. Manufacturing

SAMPLE JOB TITLES OF SUNY POTSDAM ALUMNI:

- * Optometrist
- * Teacher
- * Lab Technician/Microbiology
- * Veterinarian
- * Toxicology Technician
- * Pharmacist
- * Physical Therapist
- * Physician
- * Environmental Scientist
- * Cytotechnologist
- * Medical Technician
- * Pharmaceutical Research
- * Respiratory Therapist
- * Chiropractor

SAMPLE JOB DESCRIPTIONS:

1. **Biochemist**: studies the chemical composition and behavior of living things. May study the effects of food, hormones, or drugs on various organisms.
2. **Environmental Educator**: develops, plans, and teaches environmental educational curriculum to foster public awareness of and concern for the earth.
3. **Pharmacologist**: studies the effects of drugs, gases, powders, and other materials on the tissues and physiological processes of humans and animals.
4. **Environmental Researchers**: studies the ties between living organisms and the environment by conducting laboratory studies, doing fieldwork, and helping develop life-sustaining measures that will preserve and protect the environment.



ENHANCING EMPLOYABILITY

1. Get involved in the career development process early, freshman year.
2. Select minors or elective courses that will demonstrate interest/applicability to your career objectives.
3. Get career related experience: INTERNSHIPS, summer and/or part-time employment, volunteer. Join a career-related association or organization.
4. Develop the following job search and self-marketing skills: resume writing, cover letter writing, create a portfolio and self-marketing brochure, researching employers, interviewing, networking, and employment searching.
5. Skills to develop: research and computer, interpretation or translation of collected data, persuasive writing, and presentation skills. A major in a closely related field may increase skills, i.e. chemistry, physics, or environmental studies.

SAMPLE INTERNSHIP EXPERIENCES:

- * Anderson Orthopedic Research Institute
 - Conducts medical research in orthopedics and rheumatology.
 - Interns will work as laboratory research assistants.
- * March of Dimes Campaign for Healthier Babies, National Capital Area
 - Works to prevent infant mortality, low birth weight, and birth defects through public and professional health education, advocacy, and medical services.
 - Intern will assist with fundraising and special events, communications and media relations, program development, grants administration, public speaking, etc.

PREPARING FOR THE JOB SEARCH MARKET

- * Write an employer targeted resume and cover letter
- * Learn job search strategies
- * Borrow resources from the SUNY Potsdam's Career Planning Library
- * Develop networking cards
- * Network w/employers at Career/Job Fairs
- * Prepare for an interview
- * Design a portfolio and self-marketing brochure
- * Visit SUNY Potsdam's Career Planning Web Site at: www.potsdam.edu/offices/career
- * Seek advice from faculty

SOME EMPLOYERS OF SUNY POTSDAM BIOLOGY ALUMNI:

- * Northeastern Eye Institute
- * State of Washington
- * North Bangor Veterinarian Clinic
- * Glaxo Inc.
- * Kinney Drugs
- * John Hopkins Hospital
- * Syracuse City School District
- * G.C. Hanford Manufacturing Co.
- * Wyeth-Ayerst Research
- * Idaho Dept. of Fish and Game
- * Sterilization Technical Services
- * Eastside Chiropractic

WHERE TO GET INFORMATION AND ASSISTANCE:

1. BIOLOGY DEPT., SUNY Potsdam, 208 Stowell Hall

- * Talk with Faculty
- * Talk with Students
- * Talk with Alumni

2. CAREER PLANNING OFFICE, SUNY Potsdam, 206 Sisson Hall

- * Individual Career Assistance
- * Workshops/Seminars
- * Employer Literature
- * Career Assessment Programs
- * Career and Job Fairs
- * Networking Assistance
- * Alumni Mentor
- * Job Vacancies
- * Summer Jobs
- * Reference file
- * Career Planning Web Site
- * Career Library
- * A Major Affair
- * Free Handouts Available

WHAT IF I WANT TO GO TO GRADUATE SCHOOL?

RESOURCES AVAILABLE AT THE CAREER PLANNING OFFICE:

- * On-Campus Graduate School Fair
- * Graduate School handout
- * GRE, GMAT, MCAT, LSAT and MAT forms and bulletins (GRE computerized tests and graduate study books)
- * Graduate books - listings of schools and programs
- * Financial aid information about graduate school
- * Peterson's Graduate Programs (G7F, G7G, G7H, G7I, G7J, G7K)
- * Web Site: www.potsdam.edu/offices/career/graduate

RESOURCES FOR FINDING EMPLOYERS:

RESOURCES AVAILABLE AT THE CAREER PLANNING OFFICE (call #'s)

- * The Career Guide Employment Opportunities Directory (R8GG)
- * Job Hunter's Sourcebook (R26D)
- * Dun's Regional Directories (R8I, R8J, R8K)
- * Careers in Veterinary Medicine (C6B)
- * Summer Jobs Worldwide (S2A)
- * Job Opportunities in Health Care (R17A)
- * American Hospital Association: Guide to Health Care Field (R17B)
- * Scientific and Technical Organizations & Agencies Directories (R45E, R45F)
- * Career Planning Job Search Internet Links www.potsdam.edu/offices/jobsearch:index.cfm
- * Additional material found by using Career Planning Library Bibliography

OTHER SOURCES OF INFORMATION:

- | | |
|---|--|
| <ul style="list-style-type: none">* The American Institute of Biological Sciences
730 11th St., NW
Washington, DC 20001-4584
(202) 628-1500
www.aibs.org | <ul style="list-style-type: none">* International Oceanographic Foundation
4600 Rickenbacher Causeway
Miami, FL 33149
(305) 361-4888
www.manta.com |
| <ul style="list-style-type: none">* American Society for Biochemistry and Molecular Biology
9650 Rockville Pike
Bethesda, MD 20814-3996
(301) 530-7145
www.asbmb.org | <ul style="list-style-type: none">* Association for Advancement of Medical Instrumentation
3330 Washington Blvd., Suite 400
Arlington, VA 22201-4598
(703) 525-4890
www.aami.org |



