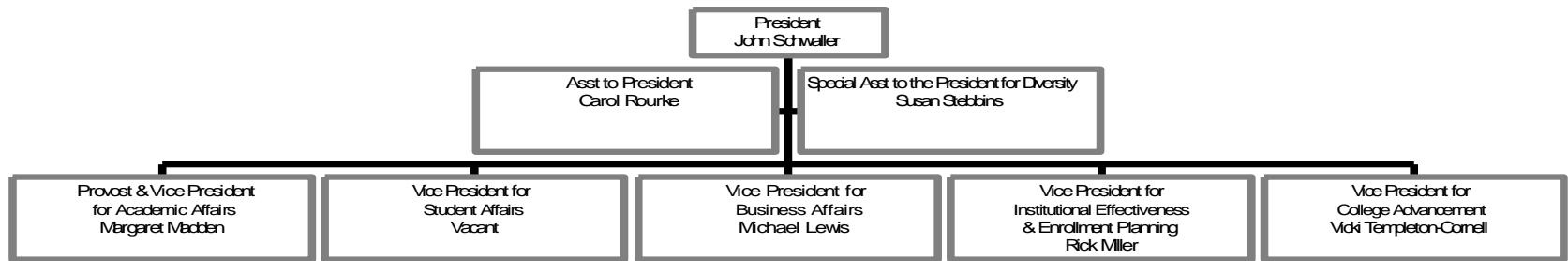


SUNY College at Potsdam Organizational Chart

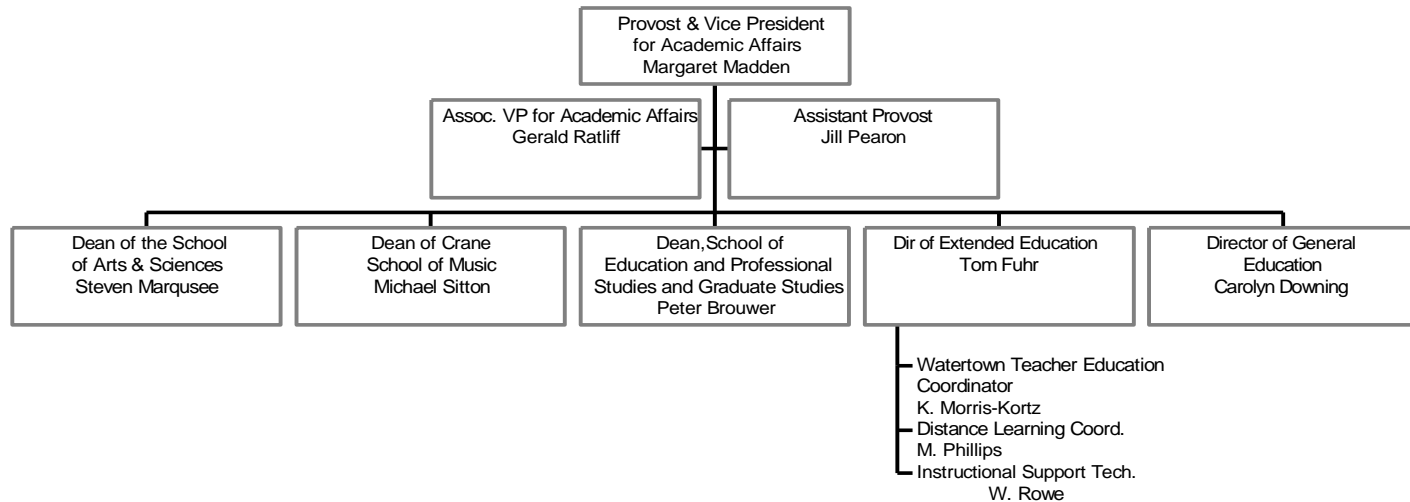
January 1, 2012

Prepared by Human Resources

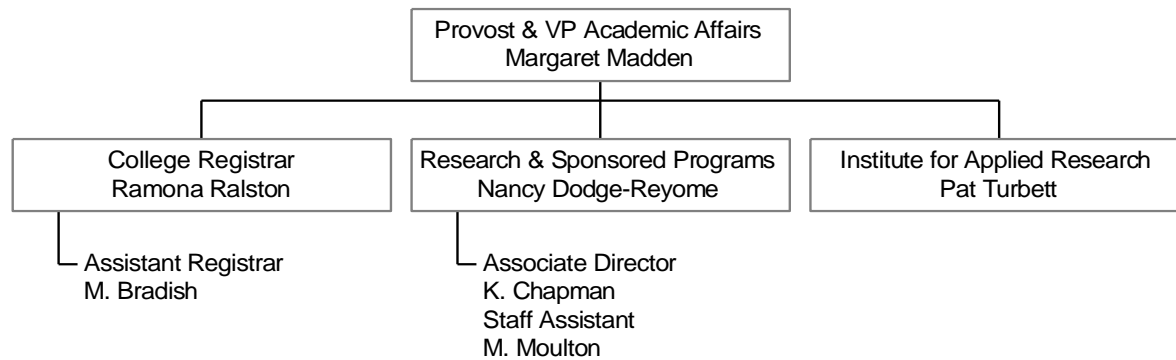
President



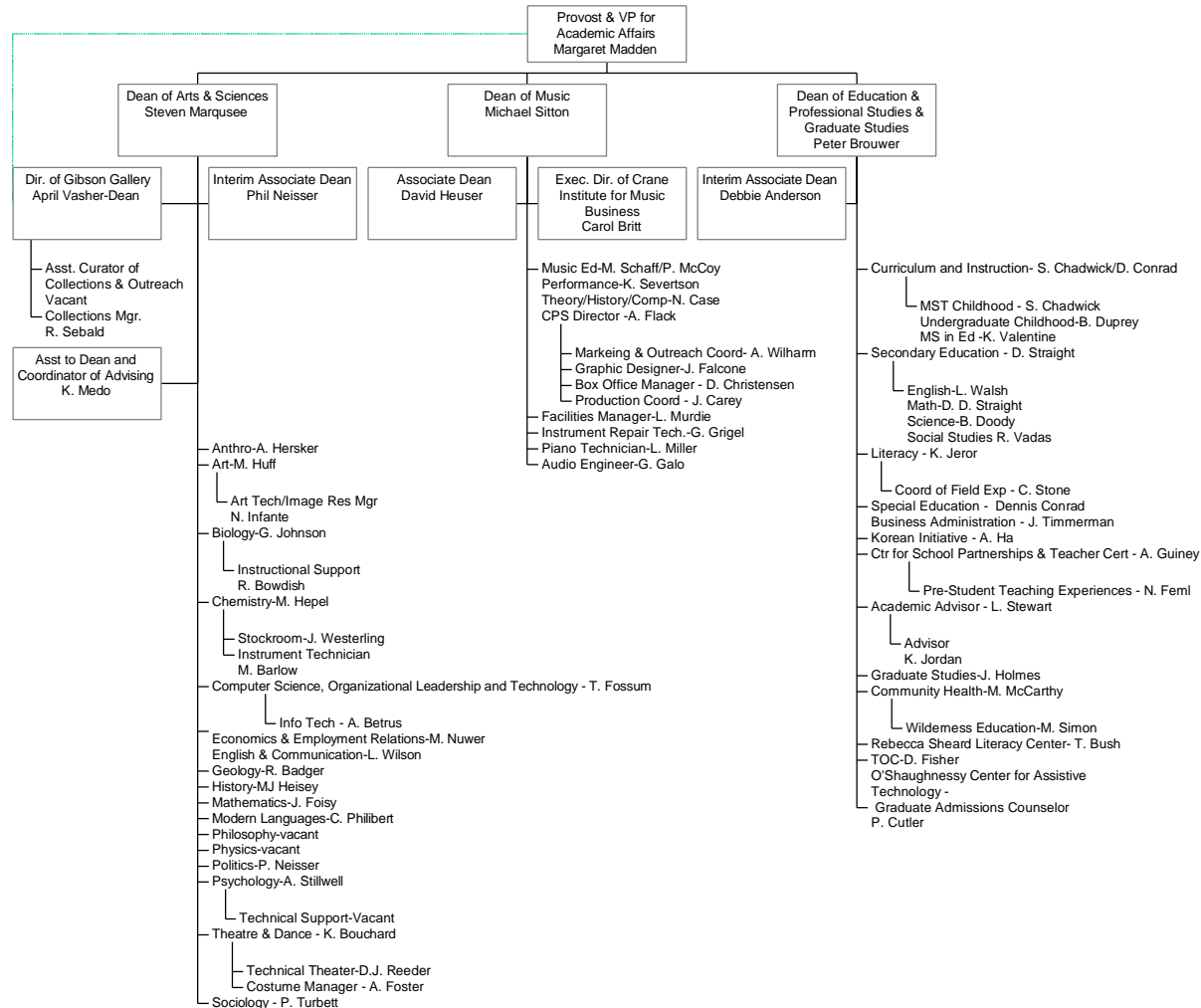
Provost & VP for Academic Affairs



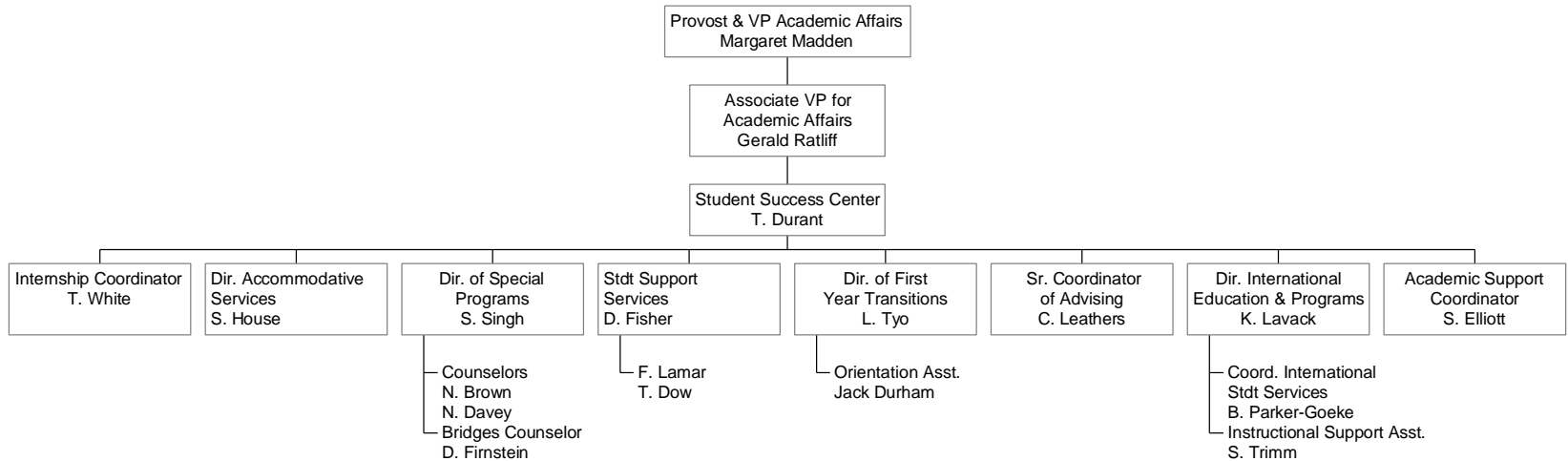
Provost & VP Academic Affairs



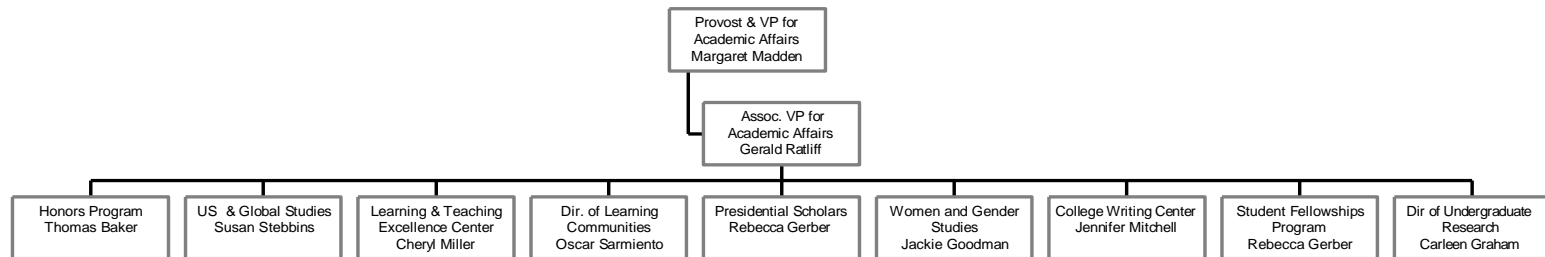
Provost & VP for Academic Affairs



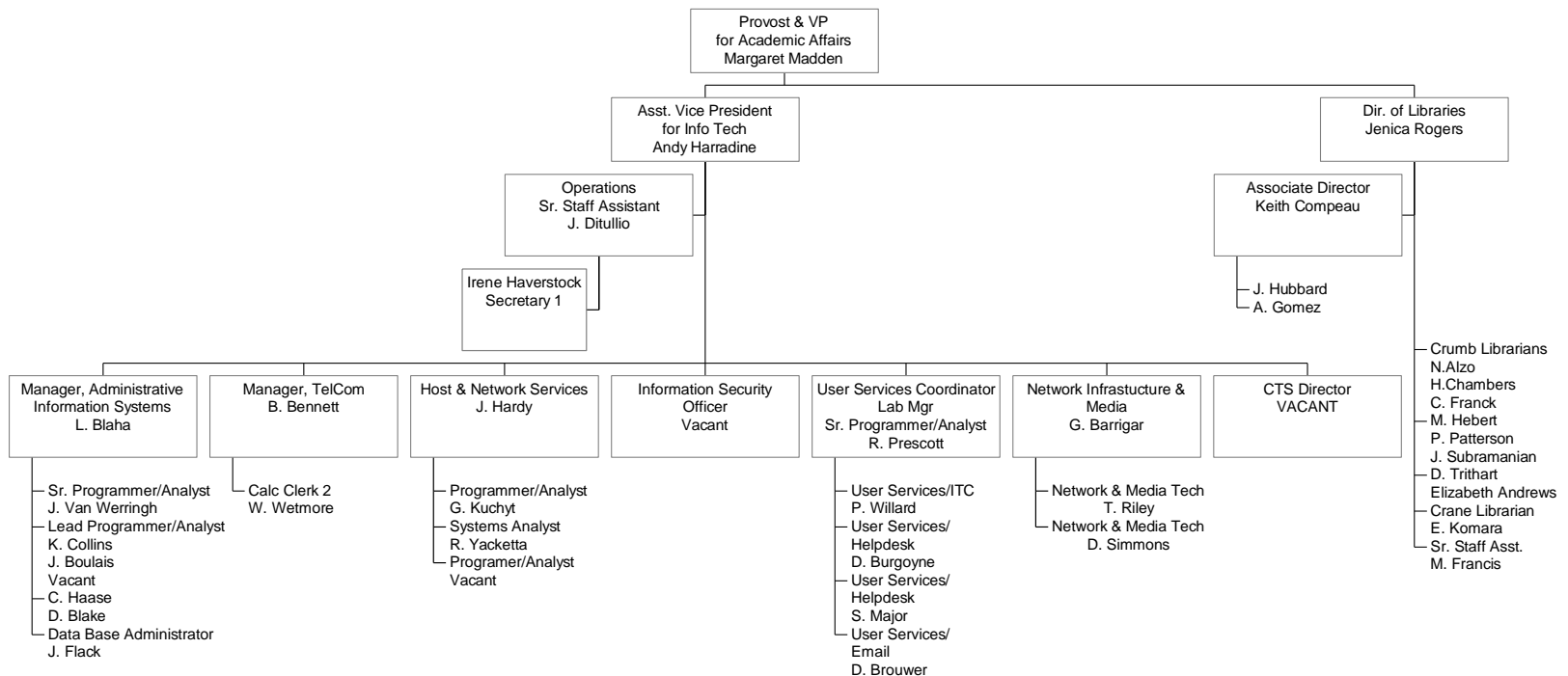
Provost & VP Academic Affairs



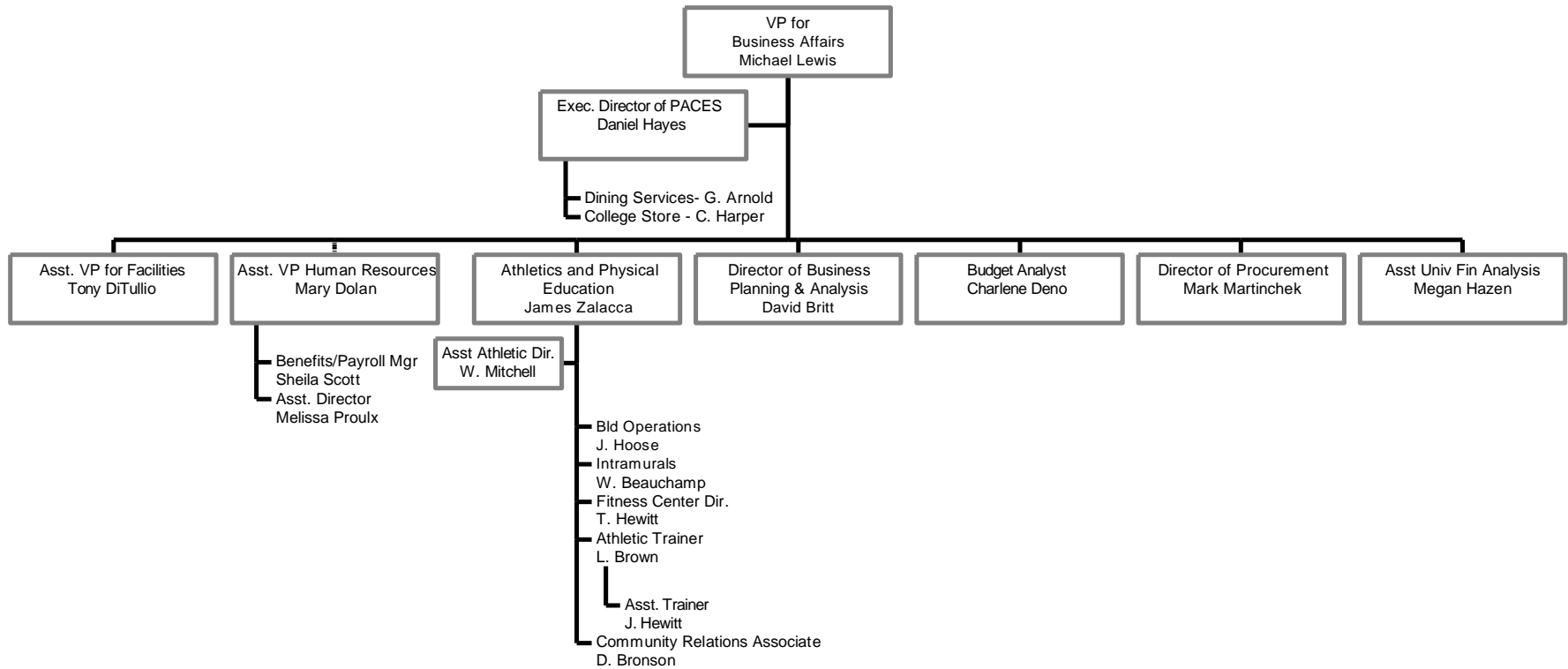
Provost & VP for Academic Affairs



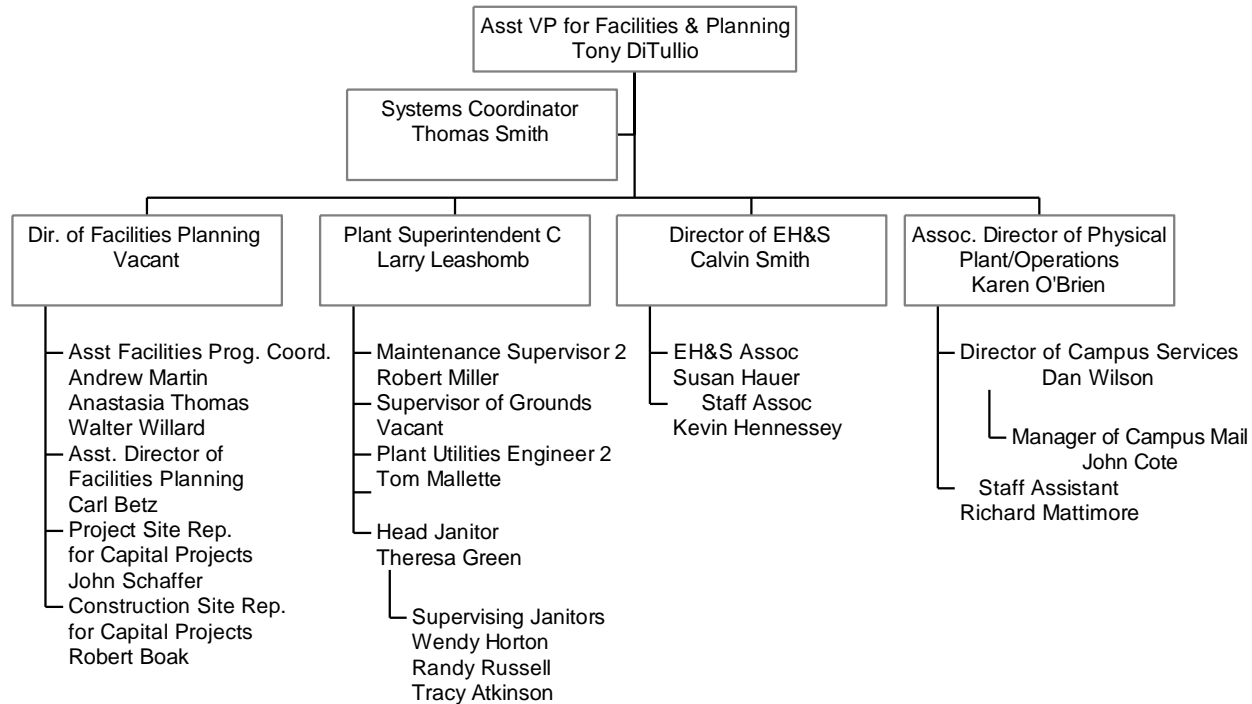
Provost & VP for Academic Affairs



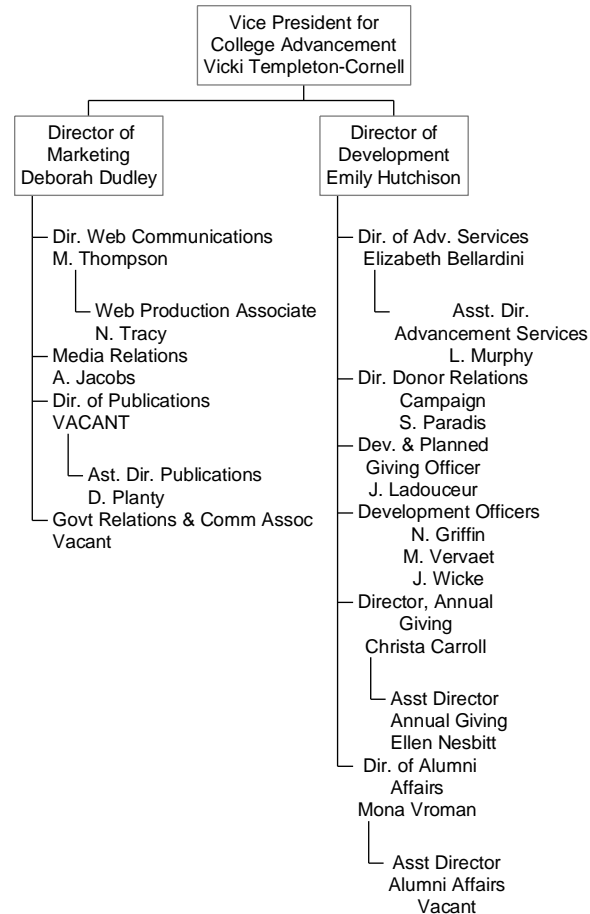
VP for Business Affairs



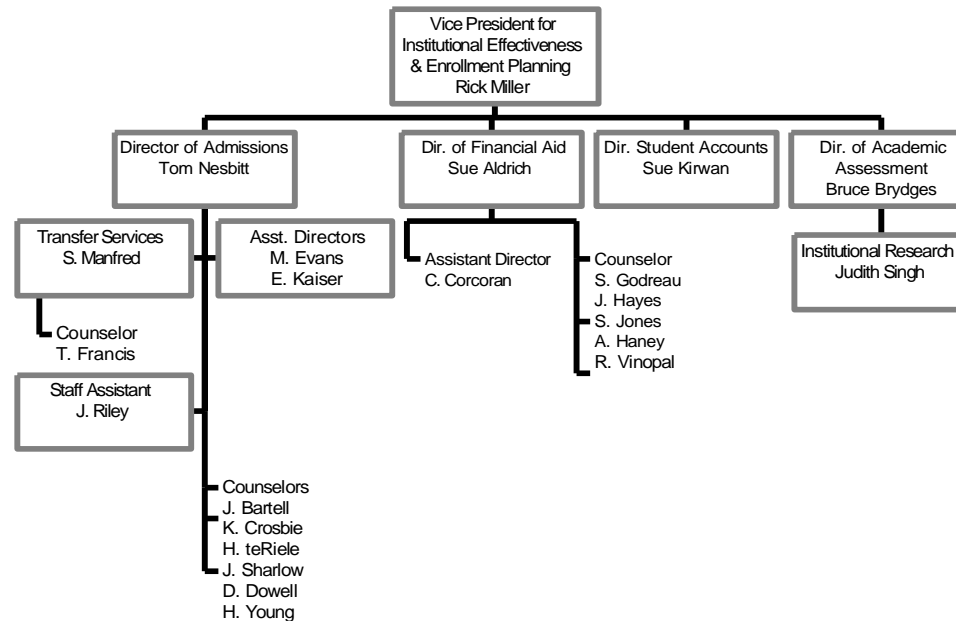
VP for Business Affairs



VP for College Advancement



Vice President for Enrollment Management & Institutional Effectiveness



Vice President for Student Affairs

