



MIDDLE STATES COMMISSION  
ON HIGHER EDUCATION

# MSCHE Self Study Steering Committee

Report on Self Study Survey

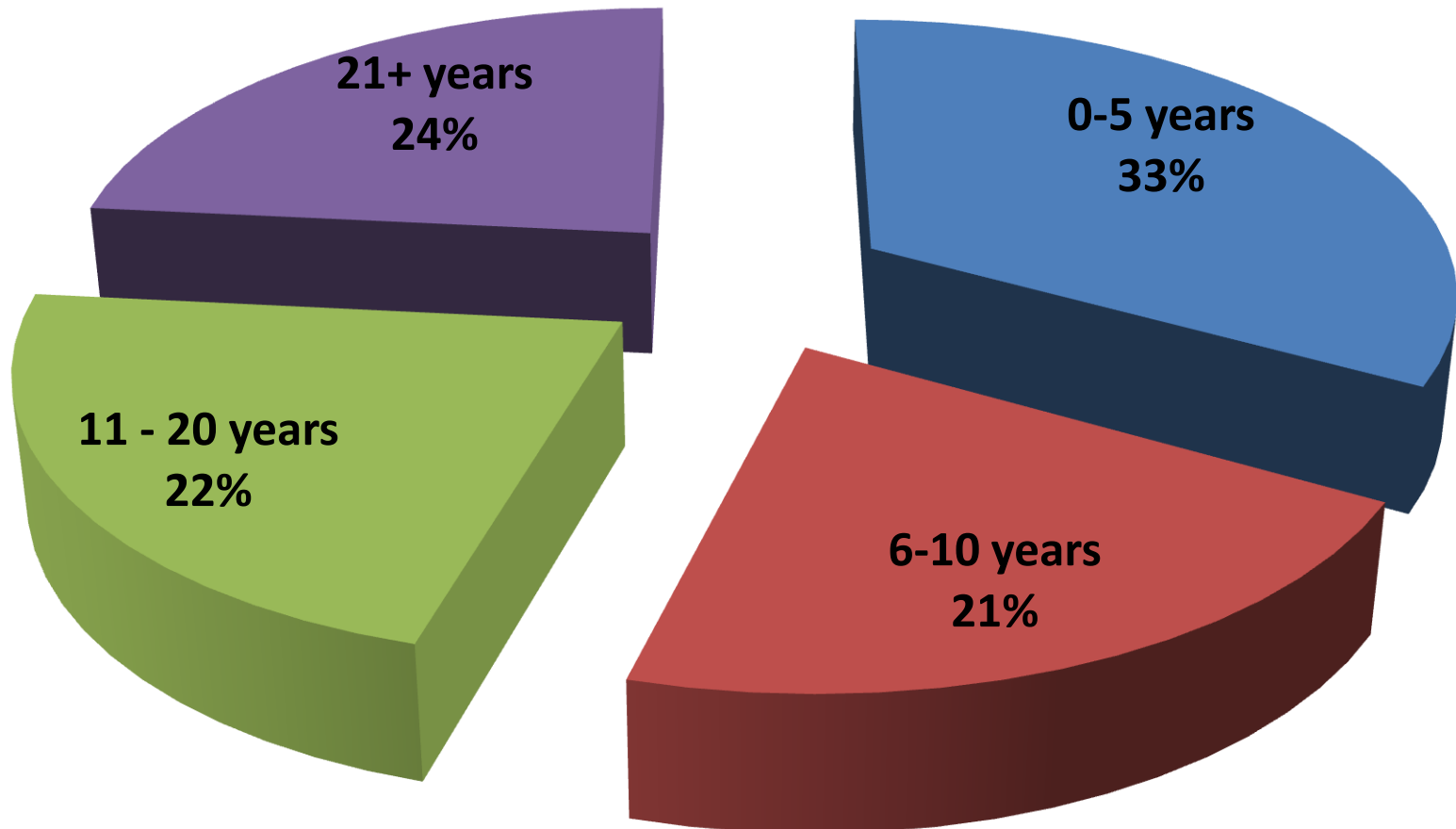
Winter 2010

Compiled by Office of Institutional Effectiveness

# Middle States Commission on Higher Education Preliminary Self-Study Survey Winter 2010

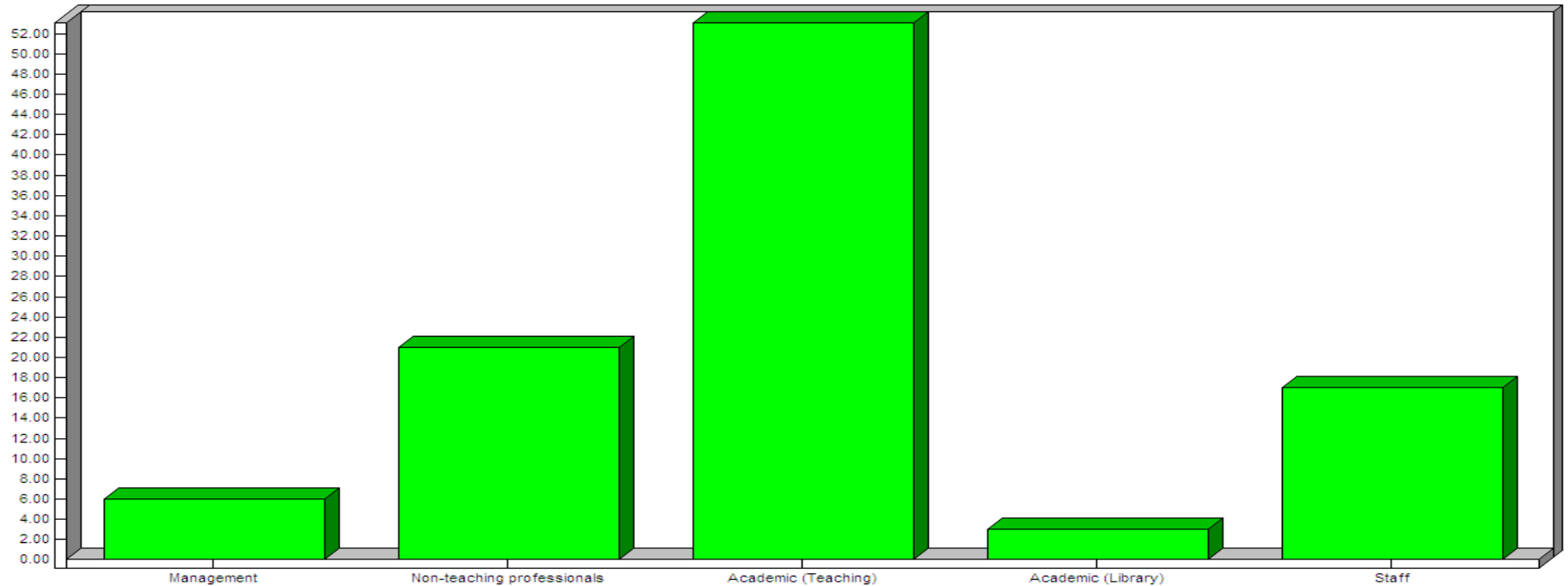
- Survey Pop file from SUNY Potsdam HR
- Survey Launched January 26<sup>th</sup>, 2010
- Reminder sent February 1<sup>st</sup>, 2010
- Survey closed February 7<sup>th</sup>, 2010
- Total Survey Invitations n=854
- Total Survey responses n=181
- Response rate 21%

# 1. How long have you been teaching/working at SUNY Potsdam? n=181



## 2. Please check your title:

Question 2



**Management**

**5.5%**

**Non-teaching professionals**

**21.0%**

**Academic (Teaching)**

**52.5%**

**Academic (Library)**

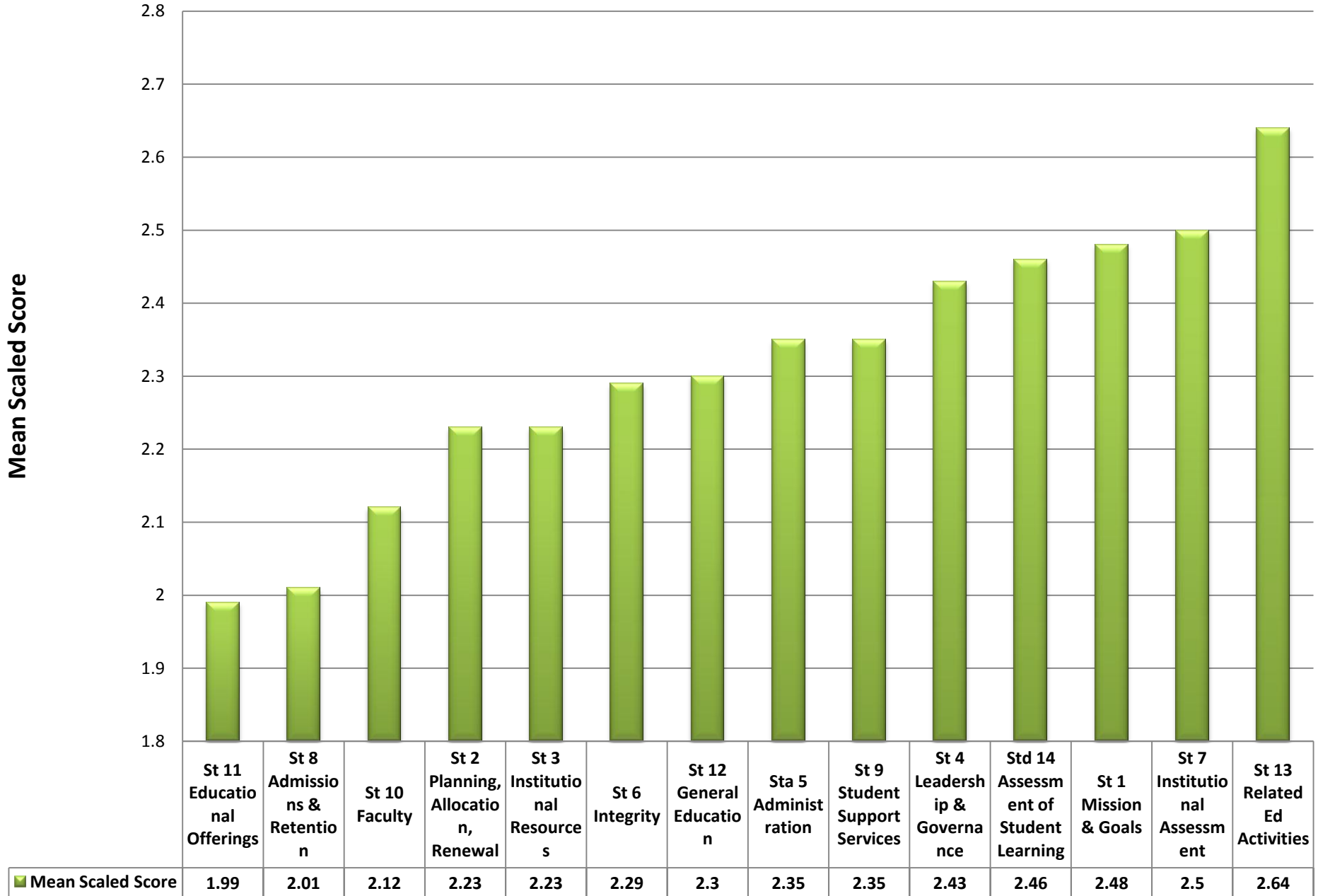
**3.3%**

**Staff**

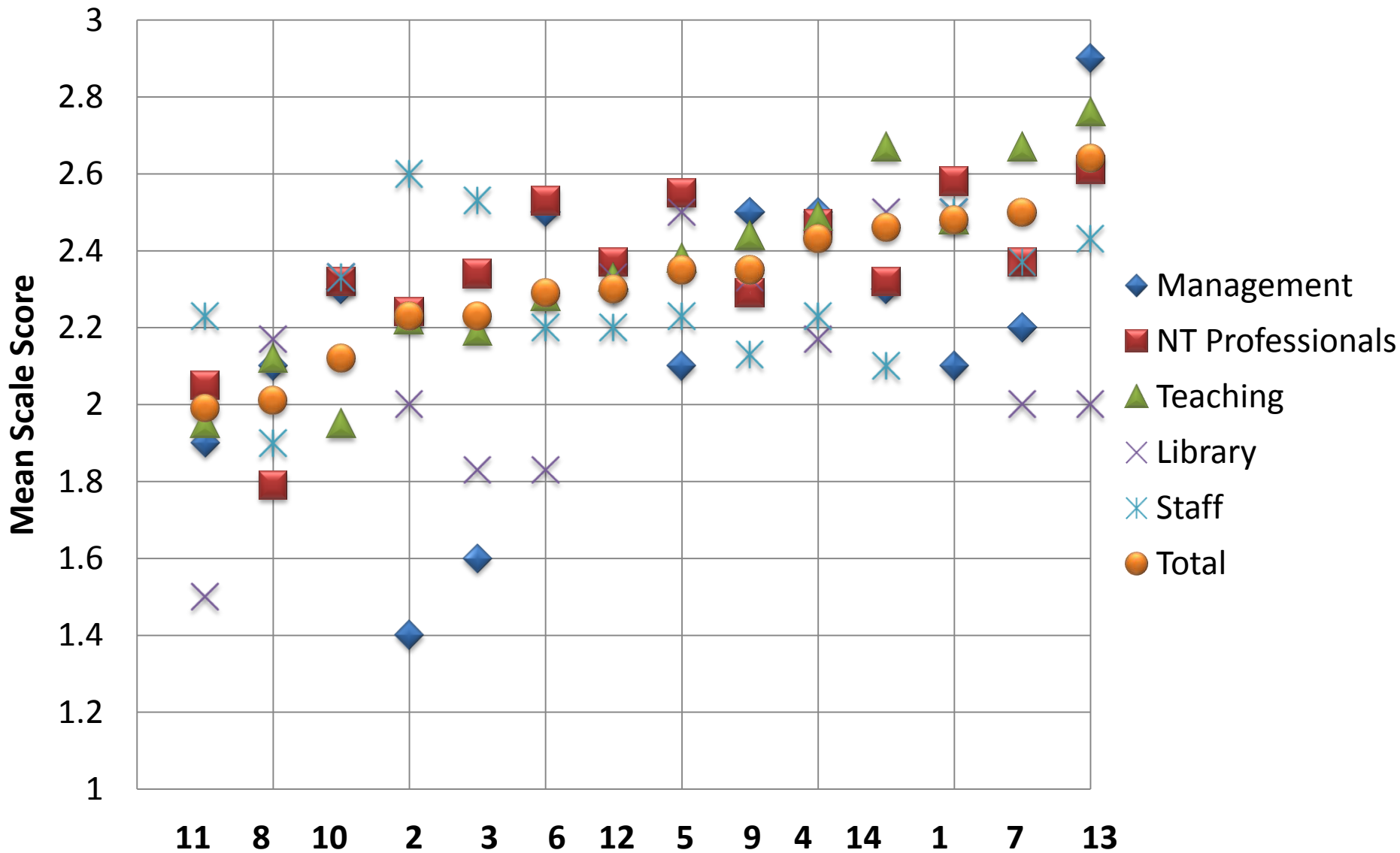
**16.6%**

# Overall Priority of MSCHE Standards

Lower scores = Higher Priority



# MSCHE Standard Priority by Role

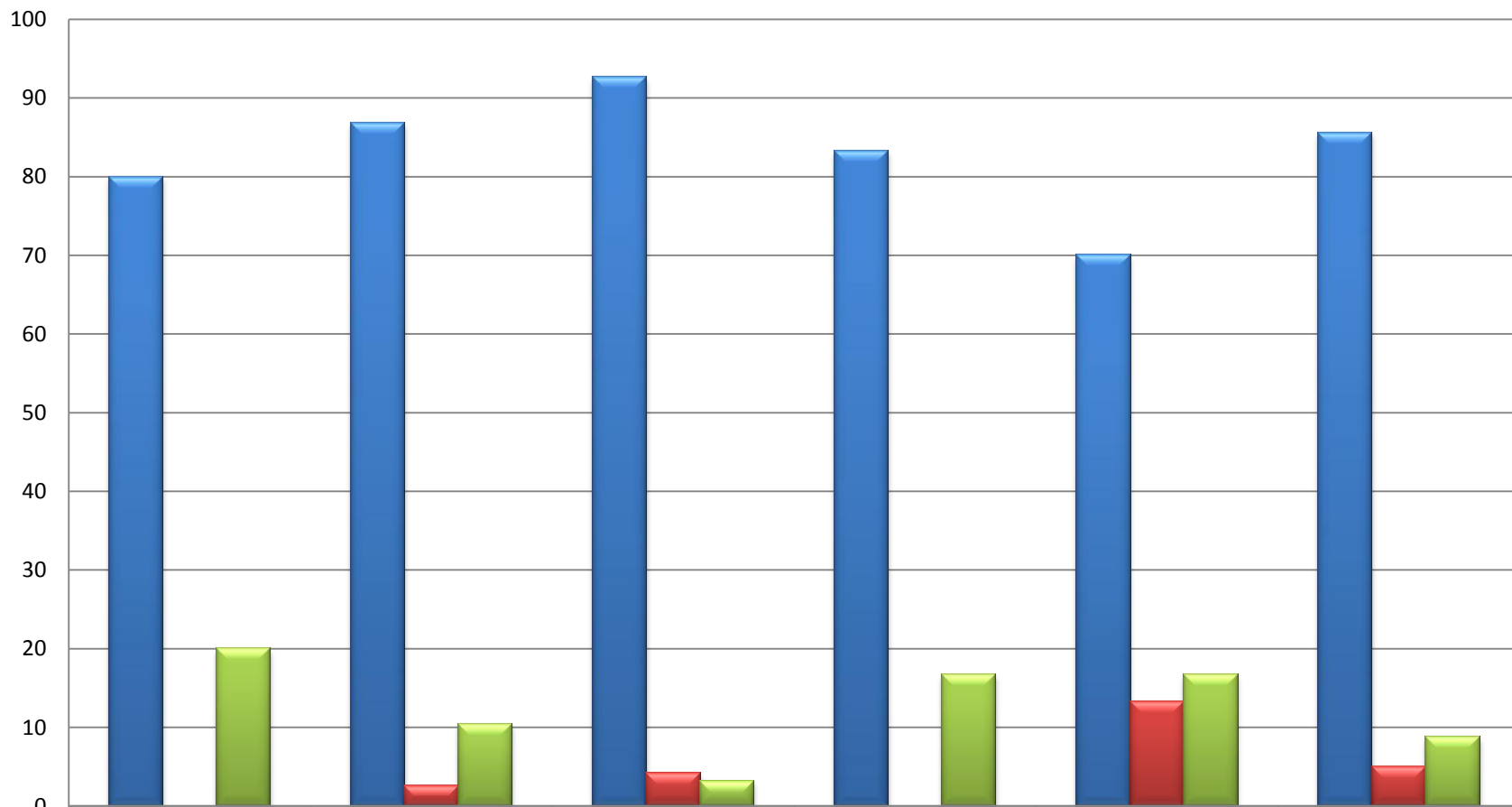


# Priority #1

## **Standard 11: Educational Offerings**

**The institution's educational offerings display academic content, rigor, and coherence appropriate to its higher education mission. The institution identifies student learning goals and objectives, including knowledge and skills, for its educational offerings.**

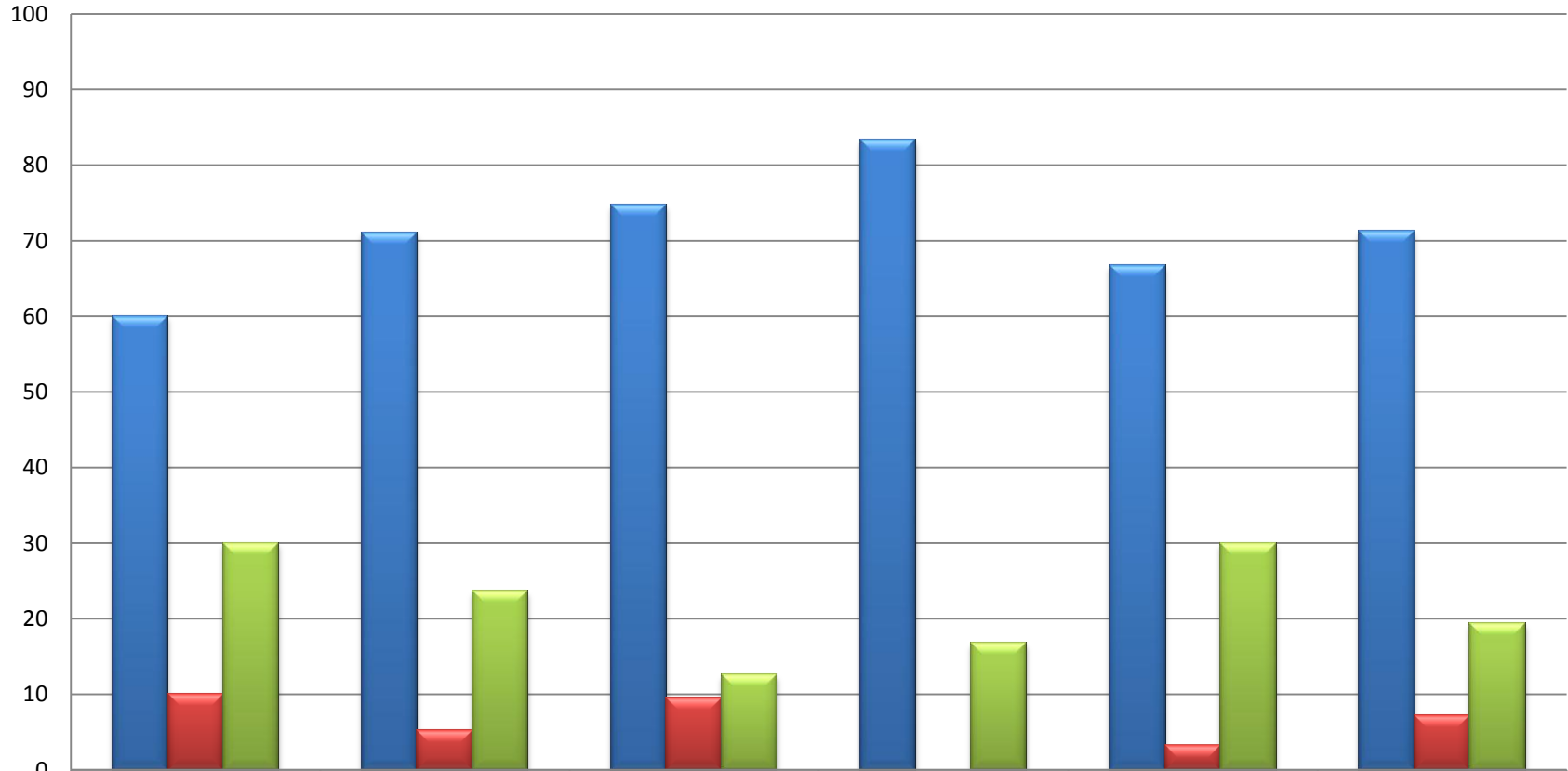
**[P#1] 11a. I am well aware of the academic content, rigor, and coherence of SUNY Potsdam's Educational Offerings and the student learning goals and objectives including associated knowledge and skills**



	Management n=10	NT Professionals n=38	Teaching n=95	Library n=6	Staff n=30	Cumulative n=181
■ Yes	80	86.8	92.6	83.3	70	85.6
■ No	0	2.6	4.2	0	13.3	5
■ Don 't know	20	10.5	3.2	16.7	16.7	8.8



**[P#1] 11b. I believe that the academic content, rigor, and coherence of SUNY Potsdam's Educational Offerings and the student learning goals and objectives including associated knowledge and skills fulfills the Standards of Excellence outlined by MSCHE**



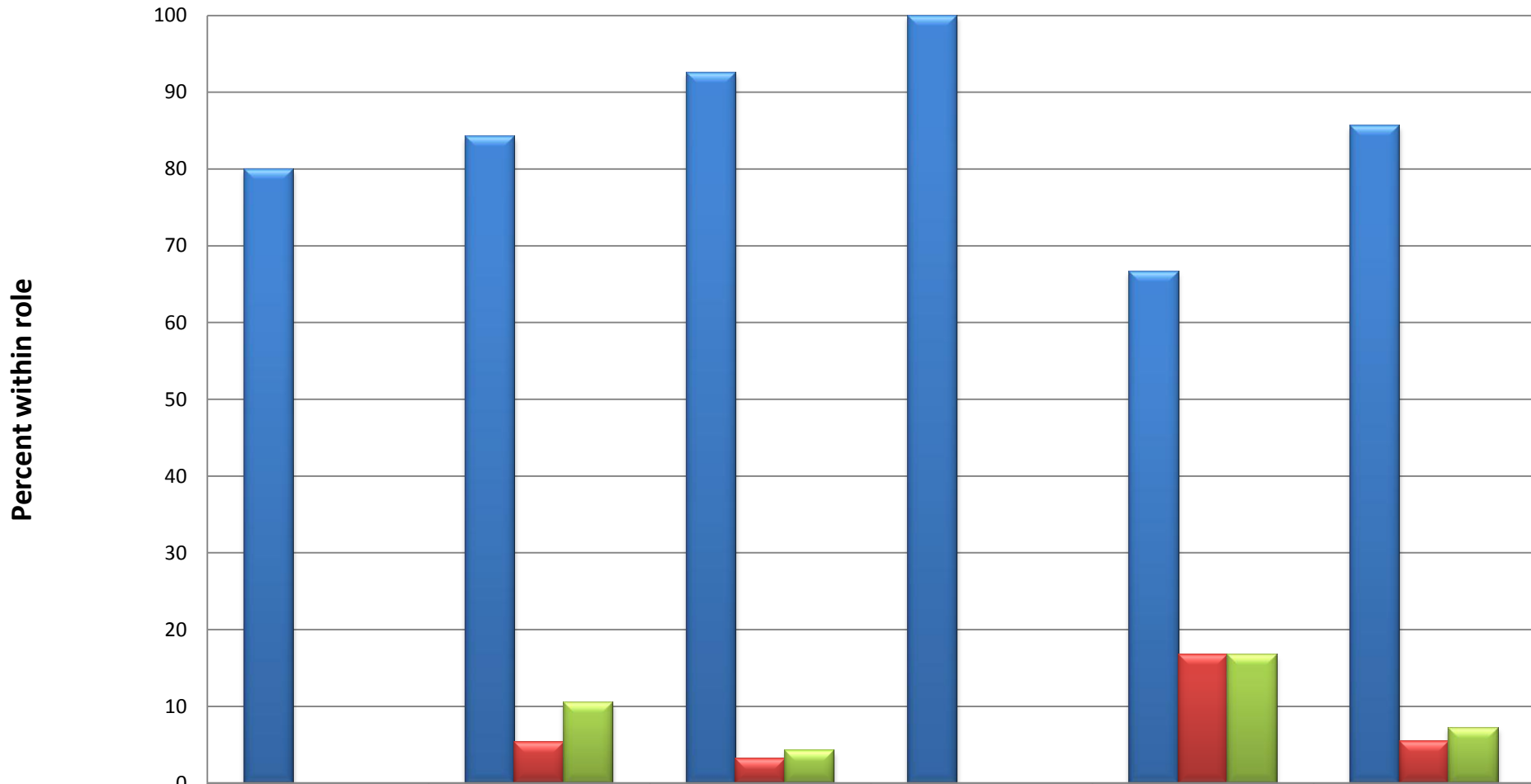
	Management n=10	NT Professionals n=38	Teaching n=95	Library n=6	Staff n=30	Cumulative n=181
■ Yes	60	71.1	74.7	83.3	66.7	71.3
■ No	10	5.3	9.5	0	3.3	7.2
■ Don 't know	30	23.7	12.6	16.7	30	19.3

# Priority #2

## **Standard 8: Student Admissions and Retention**

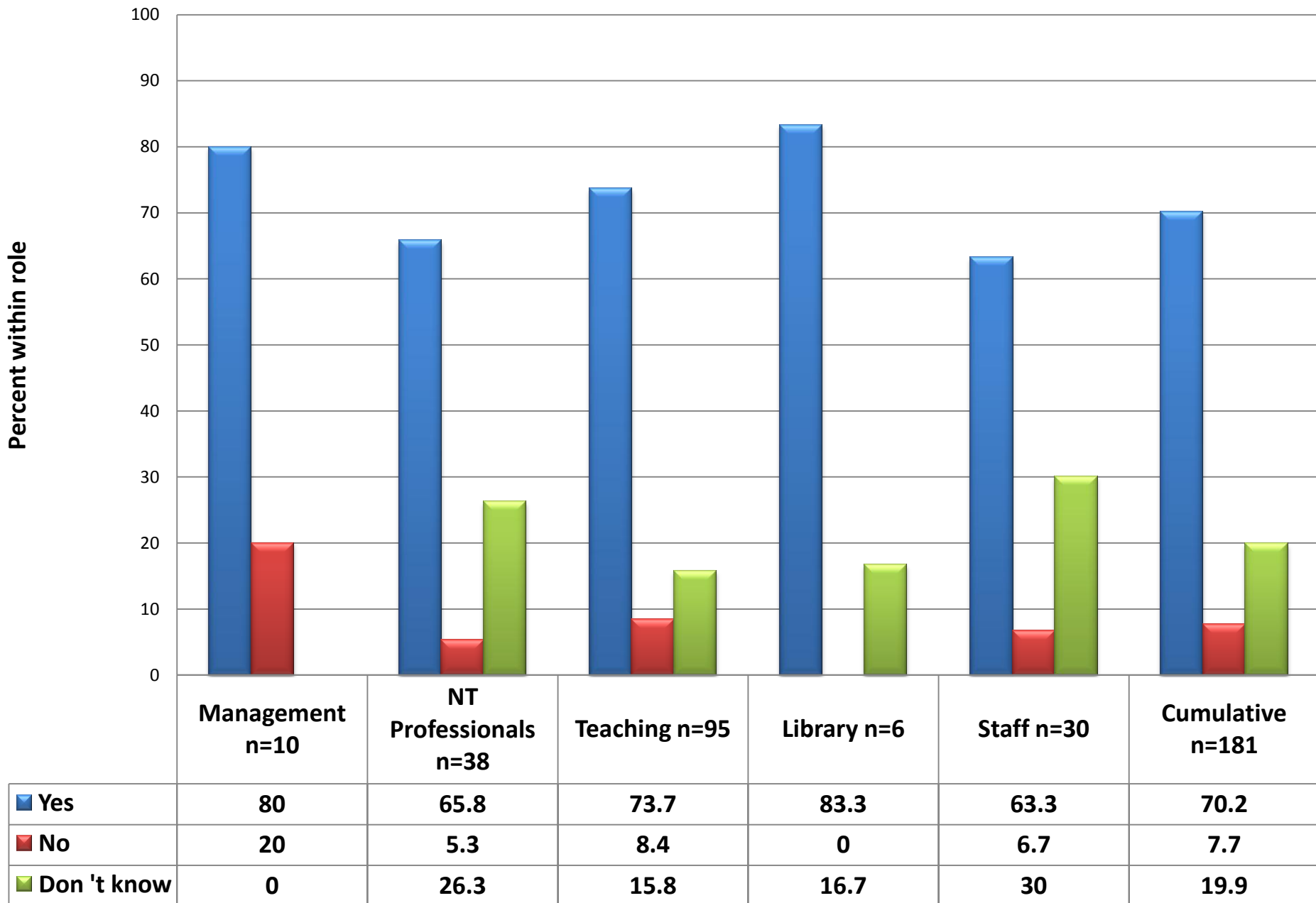
**The institution seeks to admit students whose interests, goals and abilities are congruent with its mission and seeks to retain them through the pursuit of the students' education goals.**

## [P#2] 8a. I am well aware of the SUNY Potsdam's efforts in Student Admissions and Retention



	Management n=10	NT Professionals n=38	Teaching n=95	Library n=6	Staff n=30	Cumulative n=181
■ Yes	80	84.2	92.6	100	66.7	85.6
■ No	0	5.3	3.2	0	16.7	5.5
■ Don 't know	0	10.5	4.2	0	16.7	7.2

## [P#2] 8b. I believe that SUNY Potsdam's efforts in Student Admissions and Retention fulfills the Standards of Excellence outlined by MSCHE

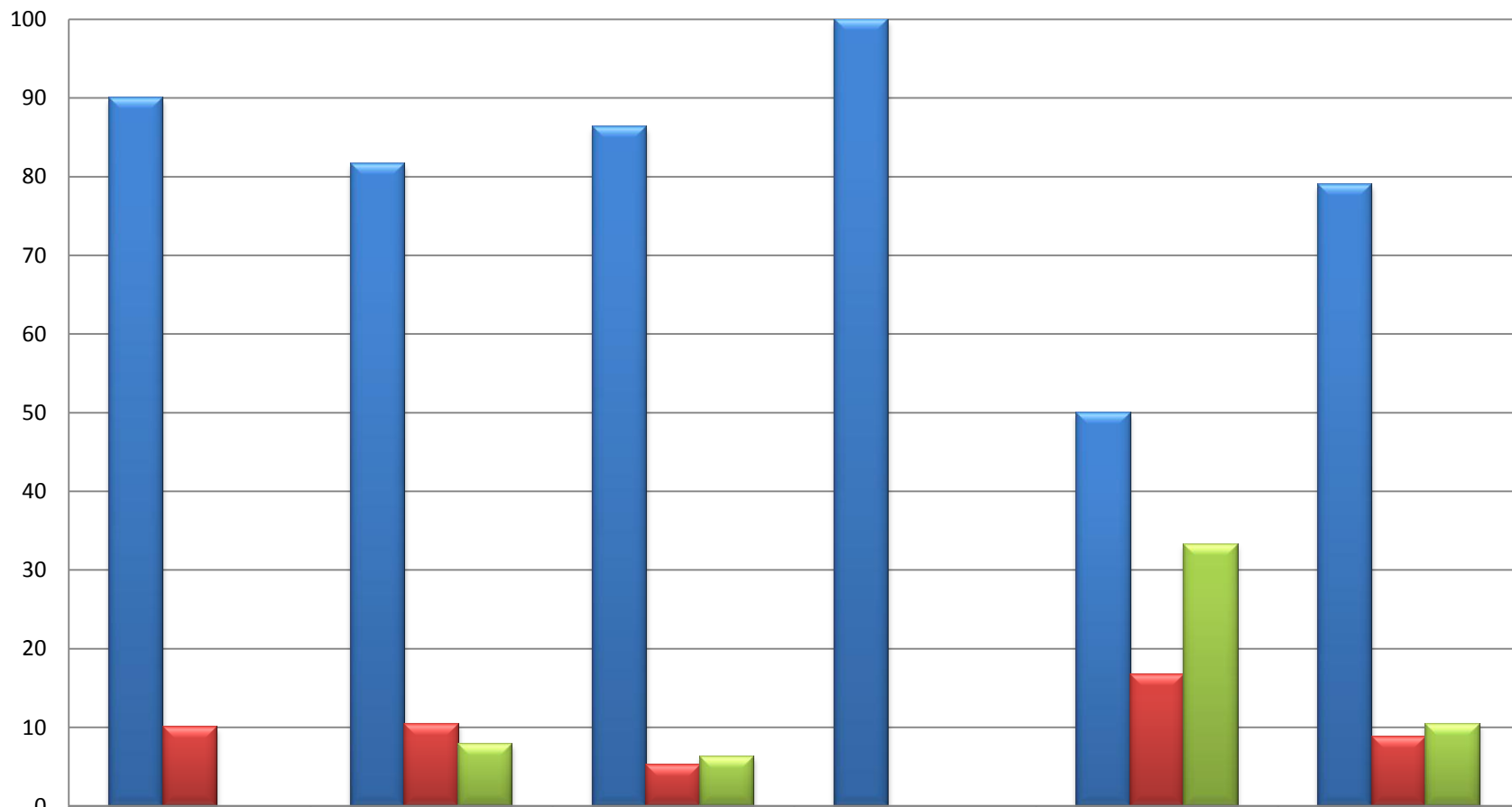


# Priority #3

## **Standard 10: Faculty**

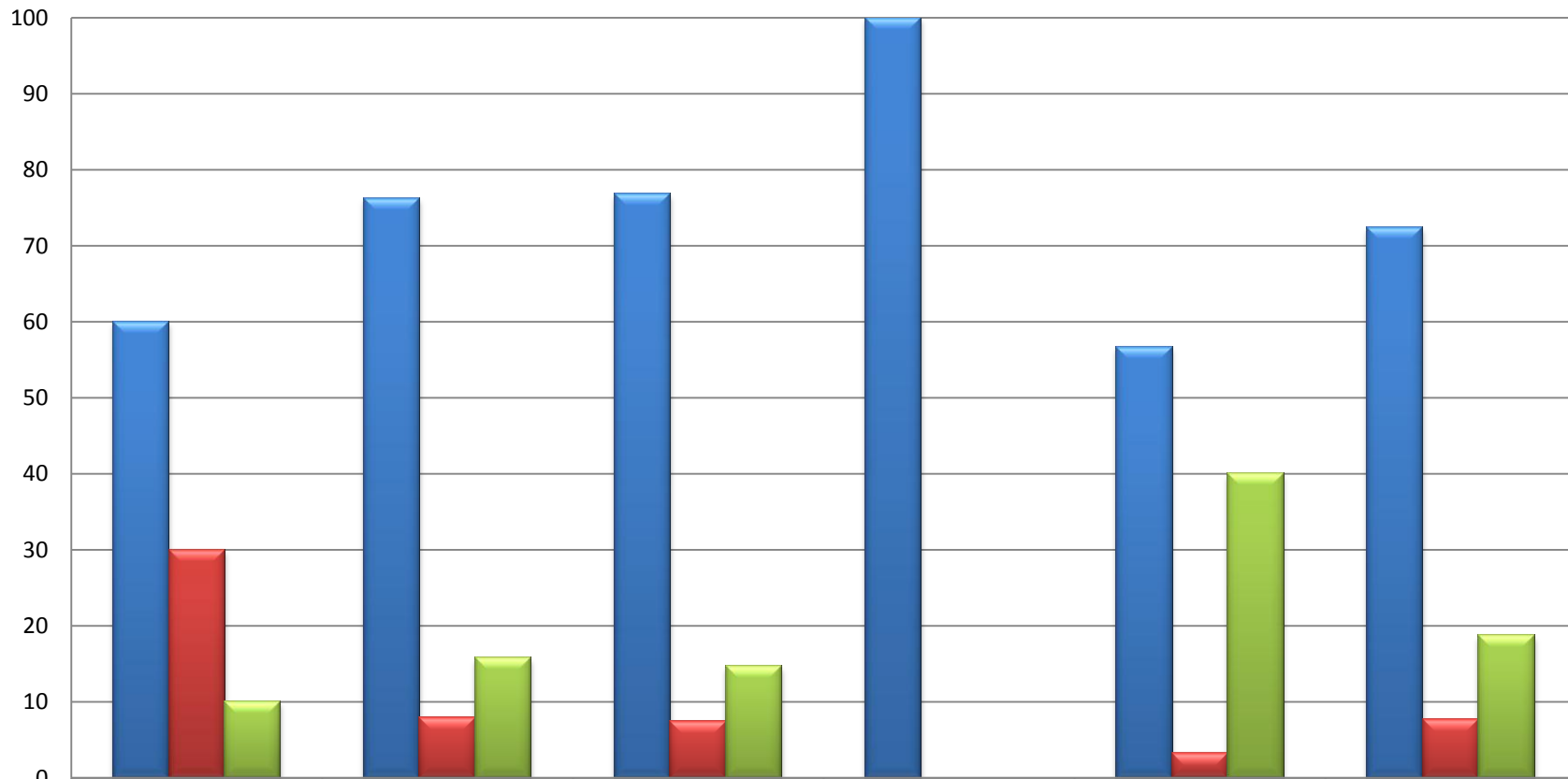
**The institution's instructional, research, and service programs are devised, developed, monitored, and supported by qualified professionals.**

**[P#3] 10a. I am well aware of qualified professionals devising, developing, monitoring and supporting instructional, research, and service programs for SUNY Potsdam's programs**



	Management n=10	NT Professionals n=38	Teaching n=95	Library n=6	Staff n=30	Cumulative n=181
■ Yes	90	81.6	86.3	100	50	79
■ No	10	10.5	5.3	0	16.7	8.8
■ Don 't know	0	7.9	6.3	0	33.3	10.5

**[P#3] 10b. I believe that qualified professionals devise, develop, monitor and support instructional, research, and service programs for SUNY Potsdam in a manner that fulfills the Standards of Excellence outlined by MSCHE**



	<b>Management n=10</b>	<b>NT Professionals n=38</b>	<b>Teaching n=95</b>	<b>Library n=6</b>	<b>Staff n=30</b>	<b>Cumulative n=181</b>
<b>Yes</b>	<b>60</b>	<b>76.3</b>	<b>76.8</b>	<b>100</b>	<b>56.7</b>	<b>72.4</b>
<b>No</b>	<b>30</b>	<b>7.9</b>	<b>7.4</b>	<b>0</b>	<b>3.3</b>	<b>7.7</b>
<b>Don 't know</b>	<b>10</b>	<b>15.8</b>	<b>14.7</b>	<b>0</b>	<b>40</b>	<b>18.8</b>

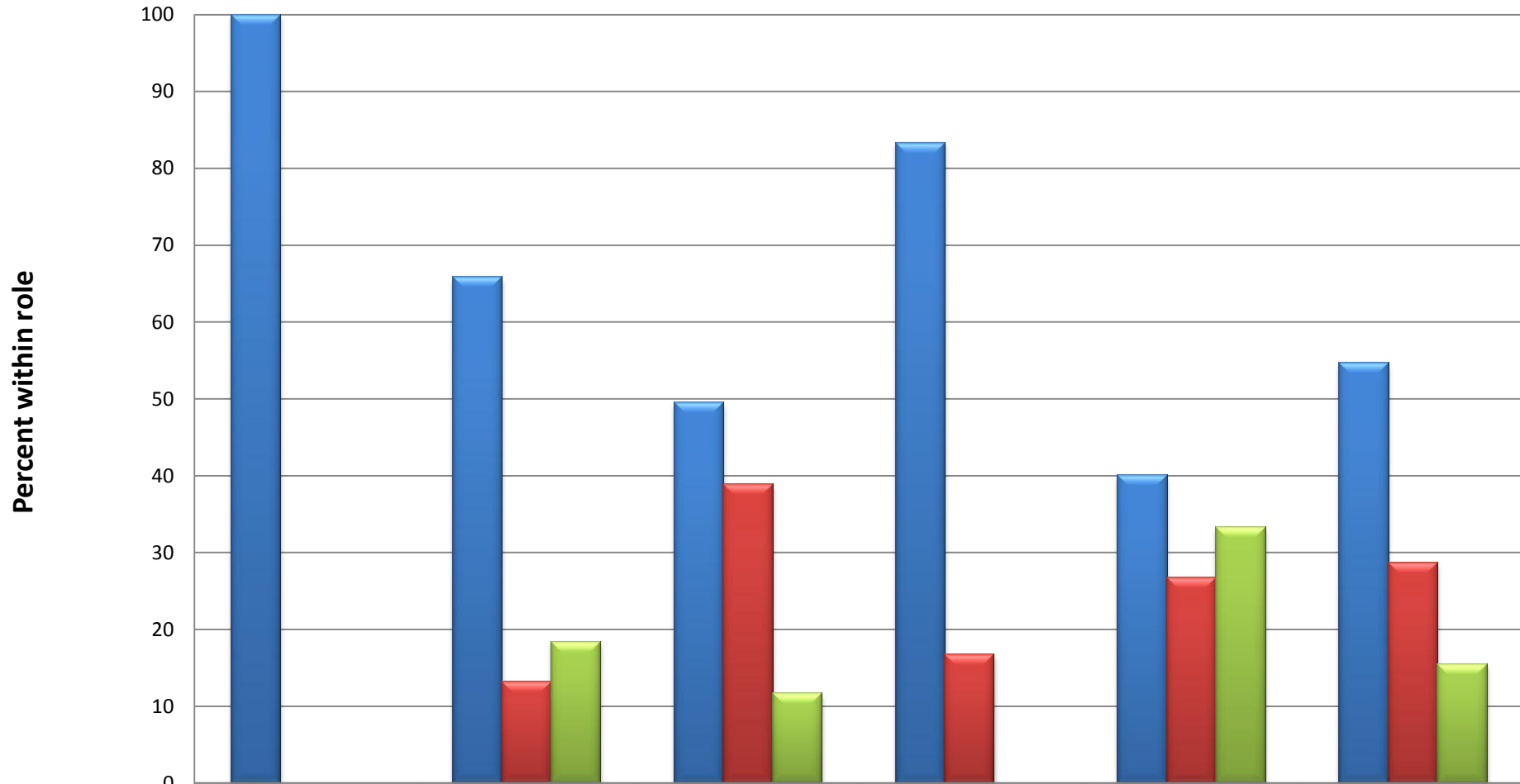
# Priority #4/5

## **Standard 2: Planning, Resource Allocation, and Institutional Renewal**

**The institution conducts ongoing planning and resource allocation based on its mission and goals, develops objectives to achieve them, and utilizes the results of its assessment activities for institutional renewal. Implementation and subsequent evaluation of the success of the strategic plan and resource allocation support the development and change necessary to improve and to maintain institutional quality.**

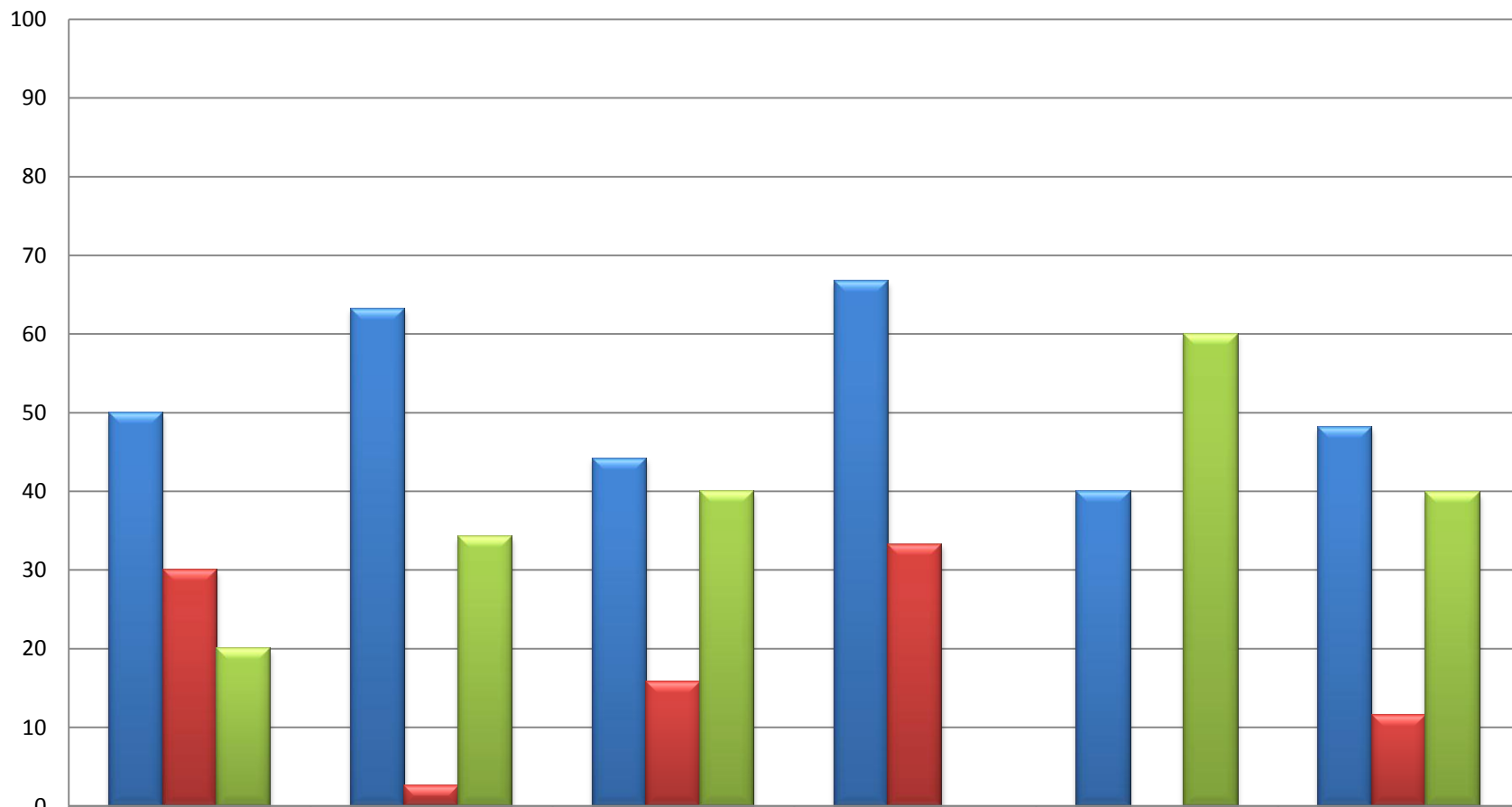


## [P#4/5] 2a. I am well aware of SUNY Potsdam's Planning, Resource Allocation, and Strategic Plan for Institutional Renewal



	Management n=10	NT Professionals n=38	Teaching n=95	Library n=6	Staff n=30	Cumulative n=181
■ Yes	100	65.8	49.5	83.3	40	54.7
■ No	0	13.2	38.9	16.7	26.7	28.7
■ Don 't know	0	18.4	11.6	0	33.3	15.5

**[P#4/5] 2b. I believe that SUNY Potsdam's Planning, Resource Allocation, and Strategic Plan for Institutional Renewal fulfills the Standards of Excellence outlined by MSCHE**



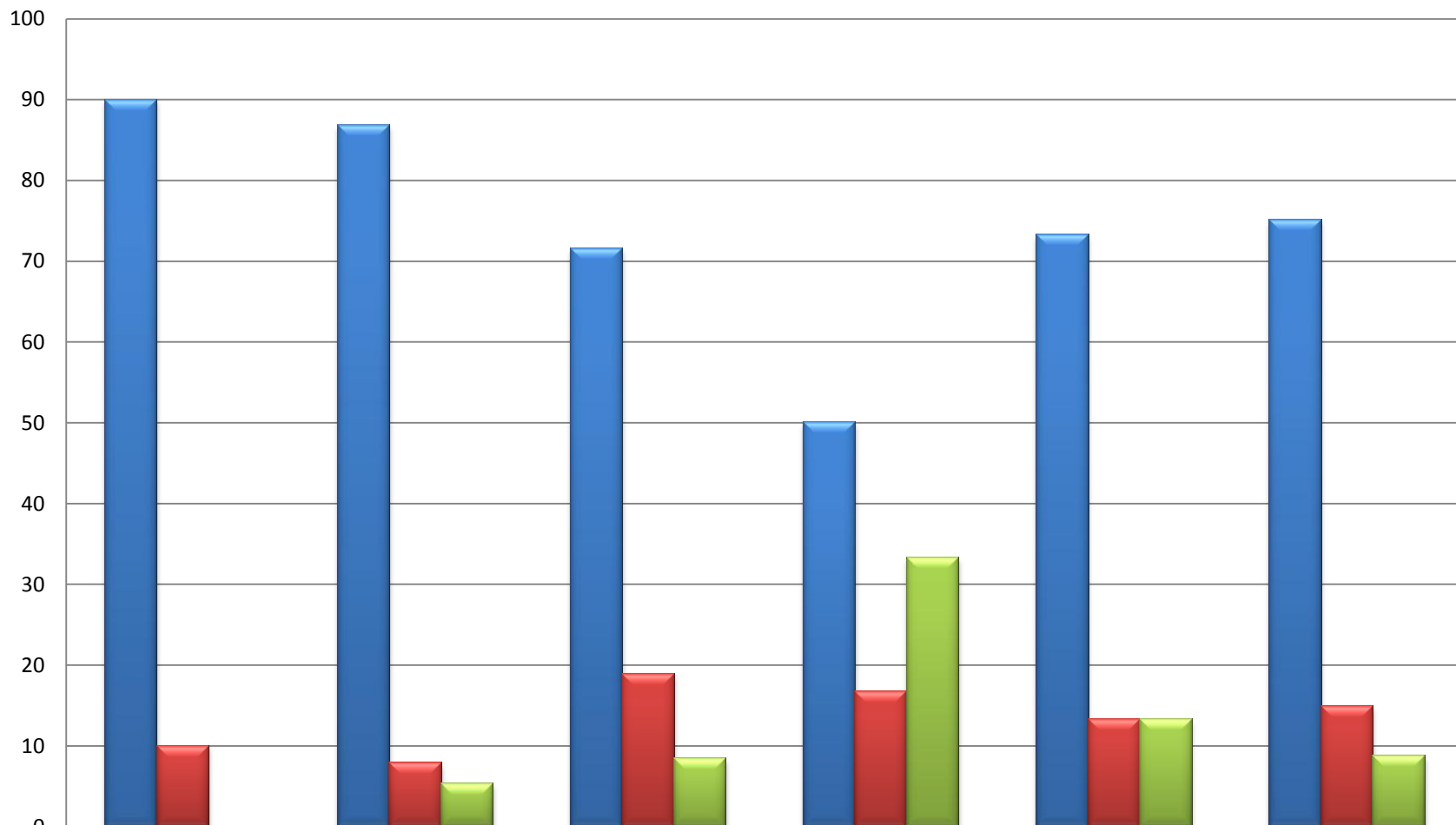
	Management n=10	NT Professionals n=38	Teaching n=95	Library n=6	Staff n=30	Cumulative n=181
■ Yes	50	63.2	44.2	66.7	40	48.1
■ No	30	2.6	15.8	33.3	0	11.6
■ Don 't know	20	34.2	40	0	60	39.8

# Priority #5

## **Standard 3: Institutional Resources**

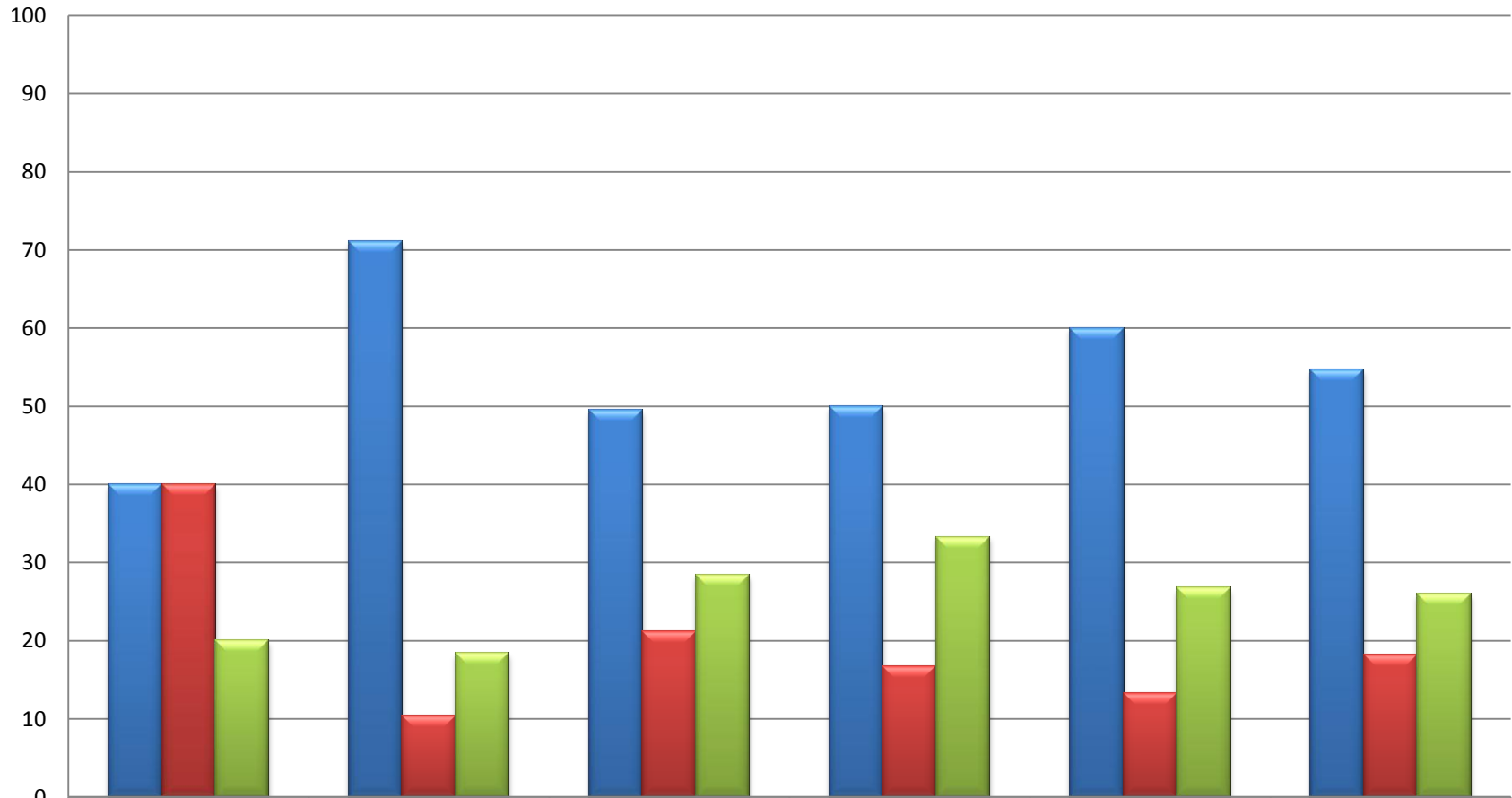
**The human, financial, technical, physical facilities, and other resources necessary to achieve an institution's mission and goals are available and accessible. In the context of the institution's mission, the effective and efficient uses of the institution's resources are analyzed as part of ongoing outcomes assessment.**

**[P#5] 3a. I am well aware of the availability and accessibility of SUNY  
Potsdam's Institutional Resources**



	Management n=10	NT Professionals n=38	Teaching n=95	Library n=6	Staff n=30	Cumulative n=181
■ Yes	90	86.8	71.6	50	73.3	75.1
■ No	10	7.9	18.9	16.7	13.3	14.9
■ Don 't know	0	5.3	8.4	33.3	13.3	8.8

**[P#5] 3b. I believe that SUNY Potsdam's strategies for the use of Institutional Resources fulfills the Standards of Excellence outlined by MSCHE**



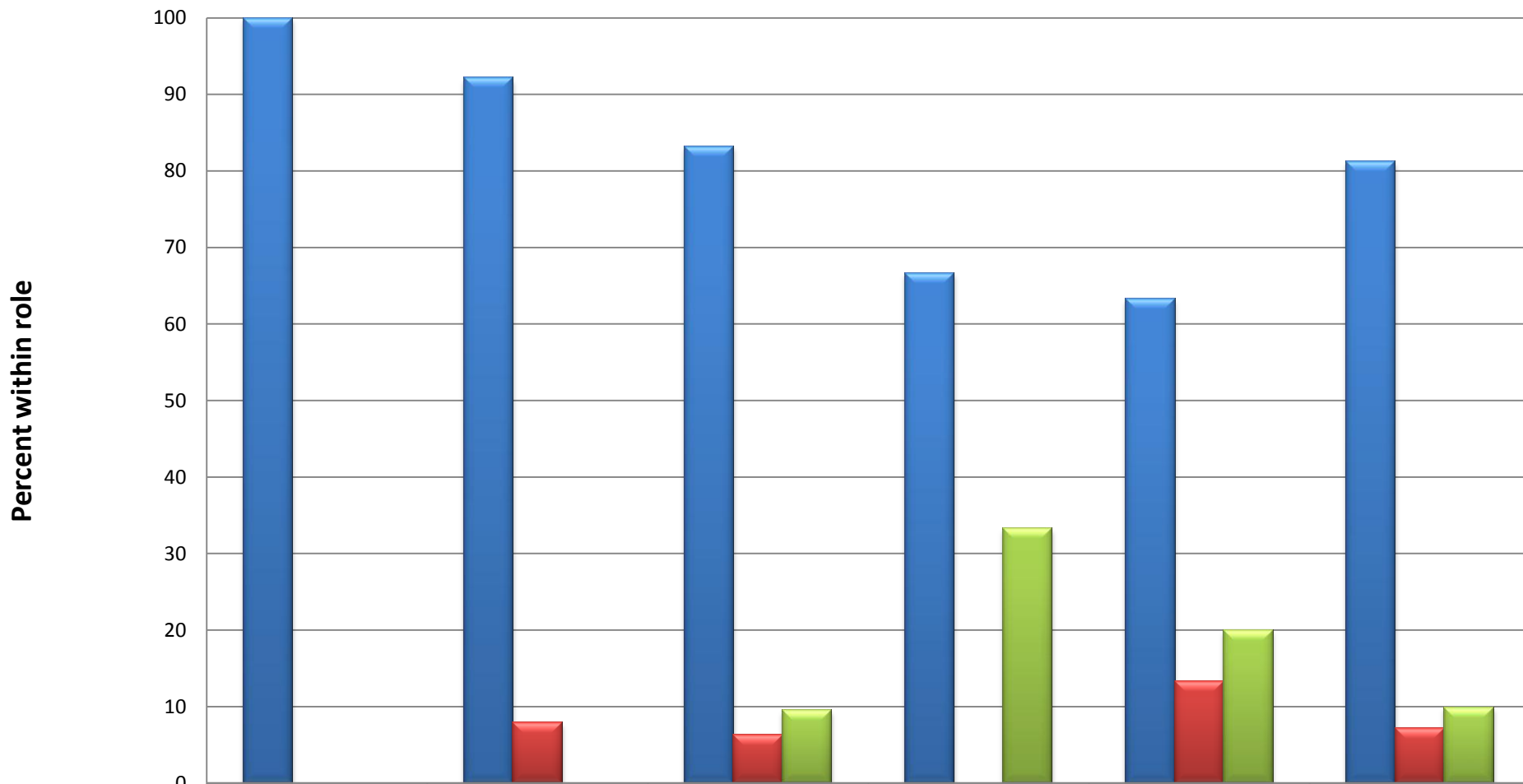
	Management n=10	NT Professionals n=38	Teaching n=95	Library n=6	Staff n=30	Cumulative n=181
■ Yes	40	71.1	49.5	50	60	54.7
■ No	40	10.5	21.1	16.7	13.3	18.2
■ Don 't know	20	18.4	28.4	33.3	26.7	26

# Priority #6

## Standard 6: Integrity

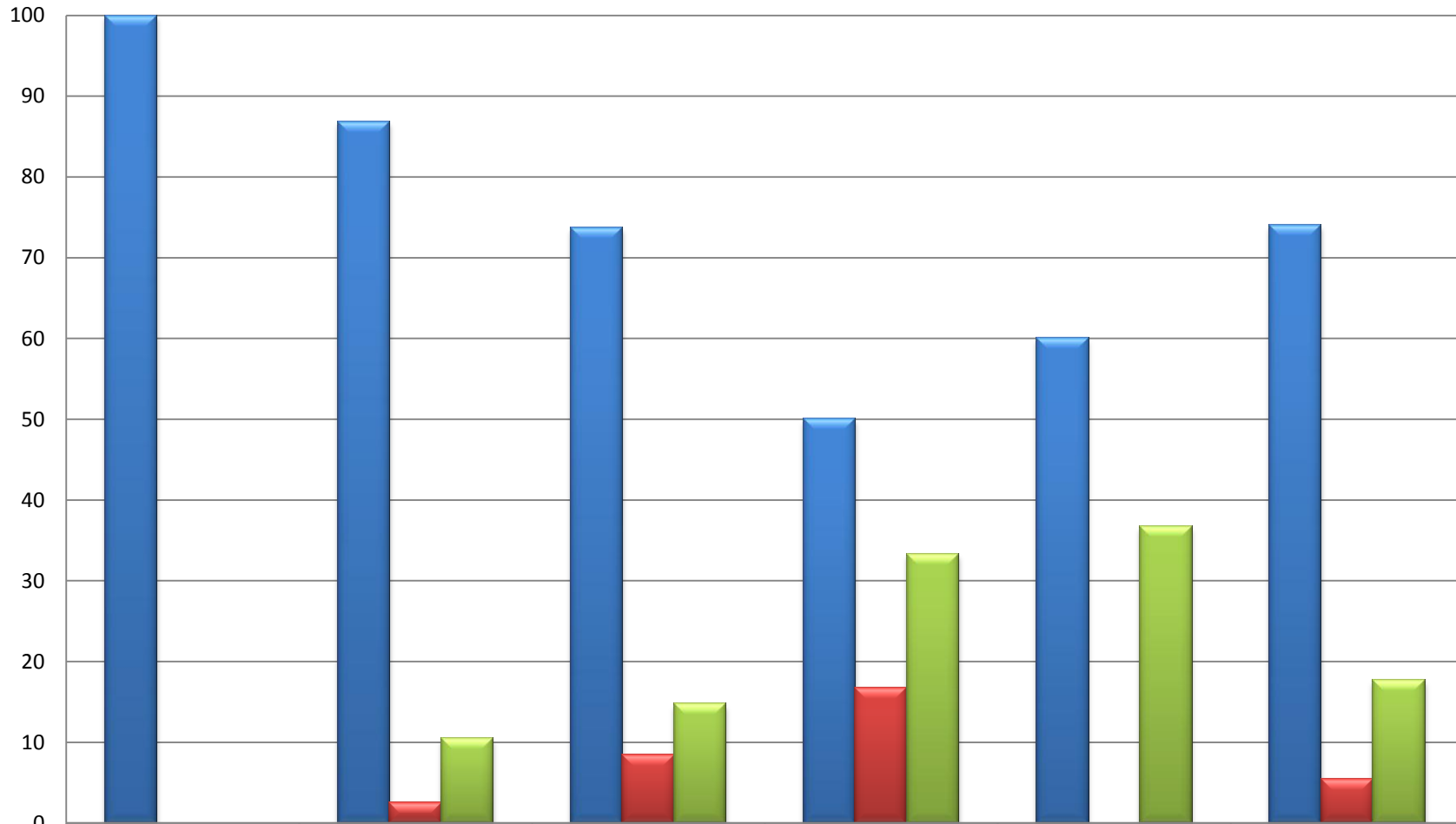
**In the conduct of its programs and activities involving the public and the constituencies it serves, the institution demonstrates adherence to ethical standards and its own stated policies, providing support for academic and intellectual freedom.**

## [P#6] 6a. I am well aware of the SUNY Potsdam's level of integrity and adherence to ethical standards



	Management n=10	NT Professionals n=38	Teaching n=95	Library n=6	Staff n=30	Cumulative n=181
■ Yes	100	92.1	83.2	66.7	63.3	81.2
■ No	0	7.9	6.3	0	13.3	7.2
■ Don 't know	0	0	9.5	33.3	20	9.9

**[P#6] 6b. I believe that SUNY Potsdam's level of integrity fulfills the Standards of Excellence outlined by MSCHE**



	<b>Management n=10</b>	<b>NT Professionals n=38</b>	<b>Teaching n=95</b>	<b>Library n=6</b>	<b>Staff n=30</b>	<b>Cumulative n=181</b>
<b>Yes</b>	<b>100</b>	<b>86.8</b>	<b>73.7</b>	<b>50</b>	<b>60</b>	<b>74</b>
<b>No</b>	<b>0</b>	<b>2.6</b>	<b>8.4</b>	<b>16.7</b>	<b>0</b>	<b>5.5</b>
<b>Don 't know</b>	<b>0</b>	<b>10.5</b>	<b>14.7</b>	<b>33.3</b>	<b>36.7</b>	<b>17.7</b>

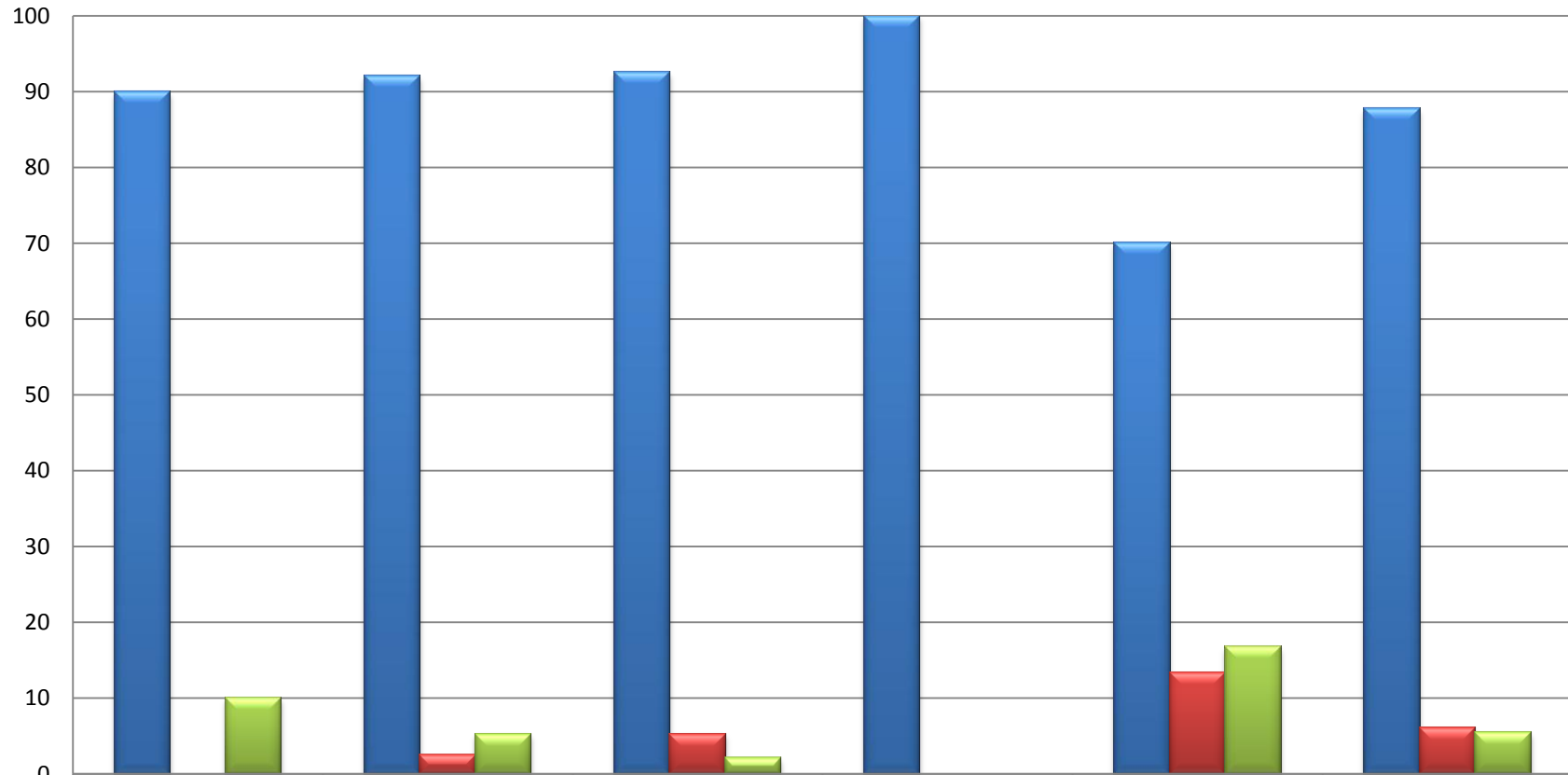


# Priority #7

## Standard 12: General Education

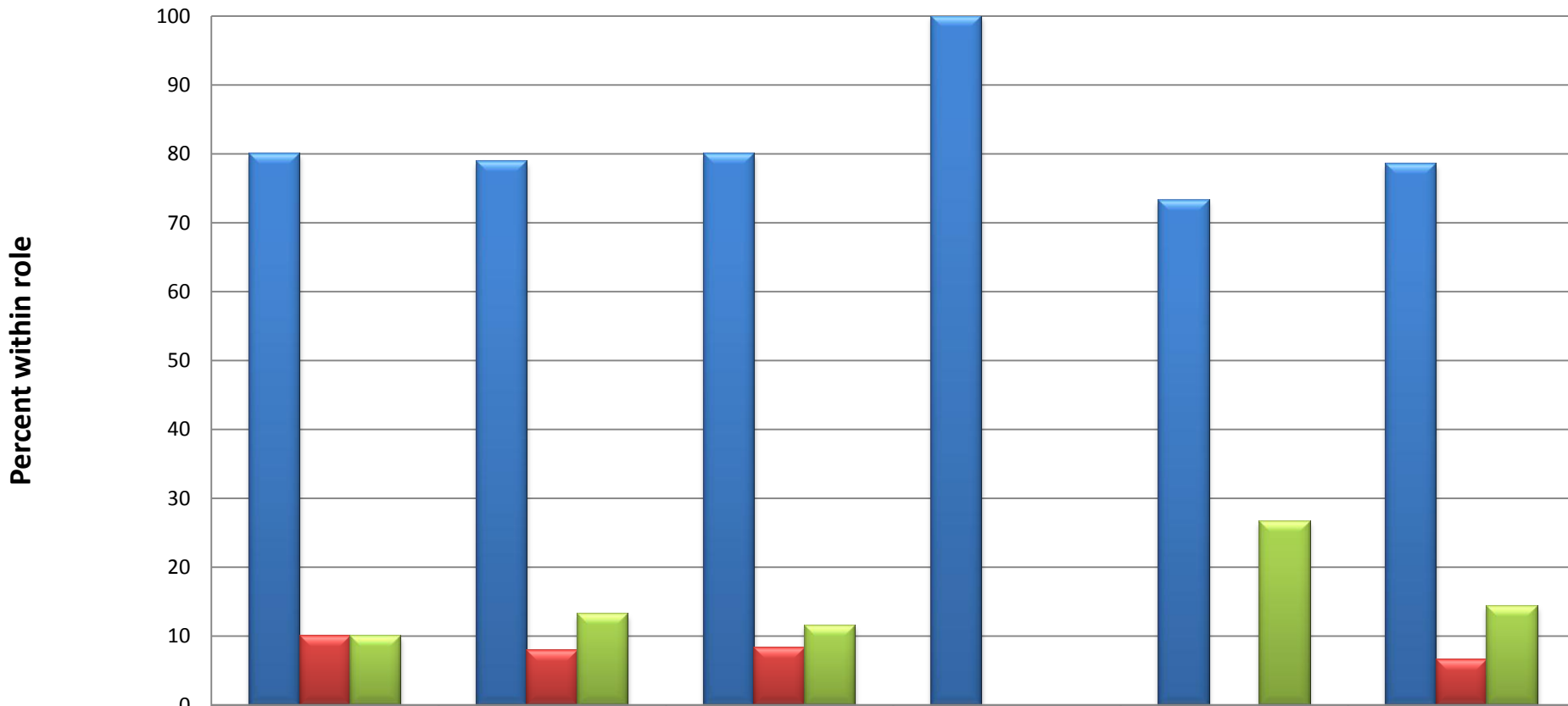
**The institution's curricula are designed so that students acquire and demonstrate college-level proficiency in general education and essential skills, including at least oral and written communication, scientific and quantitative reasoning, critical analysis and reasoning, and technological competency.**

**[P#7] 12a. I am well aware of the design and college-level expectations of SUNY Potsdam's General Education curricula including oral and written communication, scientific and quantitative reasoning, critical analysis and reasoning, and technological competency**



	Management n=10	NT Professionals n=38	Teaching n=95	Library n=6	Staff n=30	Cumulative n=181
■ Yes	90	92.1	92.6	100	70	87.8
■ No	0	2.6	5.3	0	13.3	6.1
■ Don 't know	10	5.3	2.1	0	16.7	5.5

**[P#7] 12b. I believe that the design and college-level expectations of SUNY Potsdam's General Education curricula including oral and written communication, scientific and quantitative reasoning, critical analysis and reasoning, and technological competency fulf**



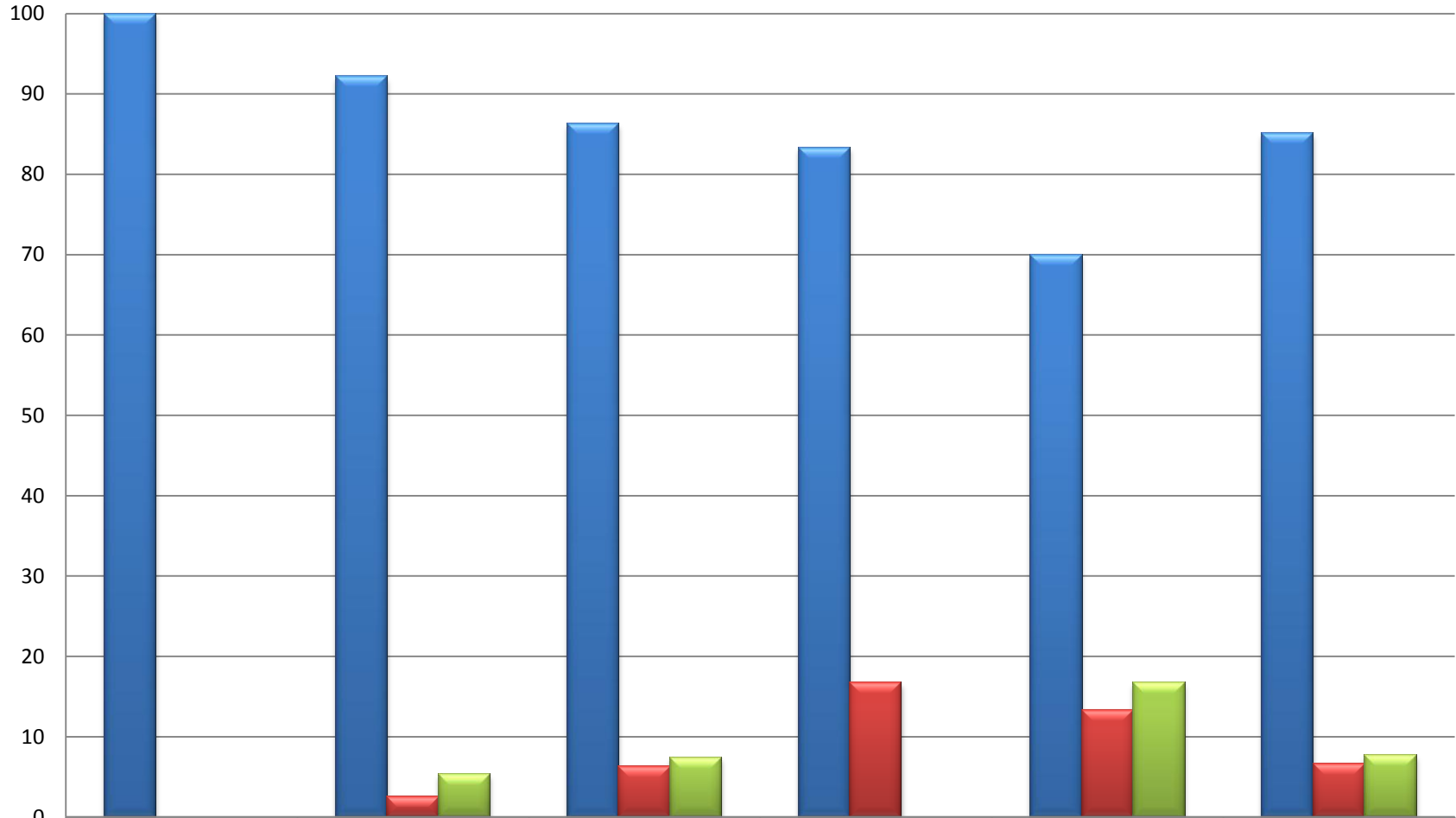
	Management n=10	NT Professionals n=38	Teaching n=95	Library n=6	Staff n=30	Cumulative n=181
■ Yes	80	78.9	80	100	73.3	78.5
■ No	10	7.9	8.4	0	0	6.6
■ Don 't know	10	13.2	11.6	0	26.7	14.4

# Priority #8/9

## **Standard 5: Administration**

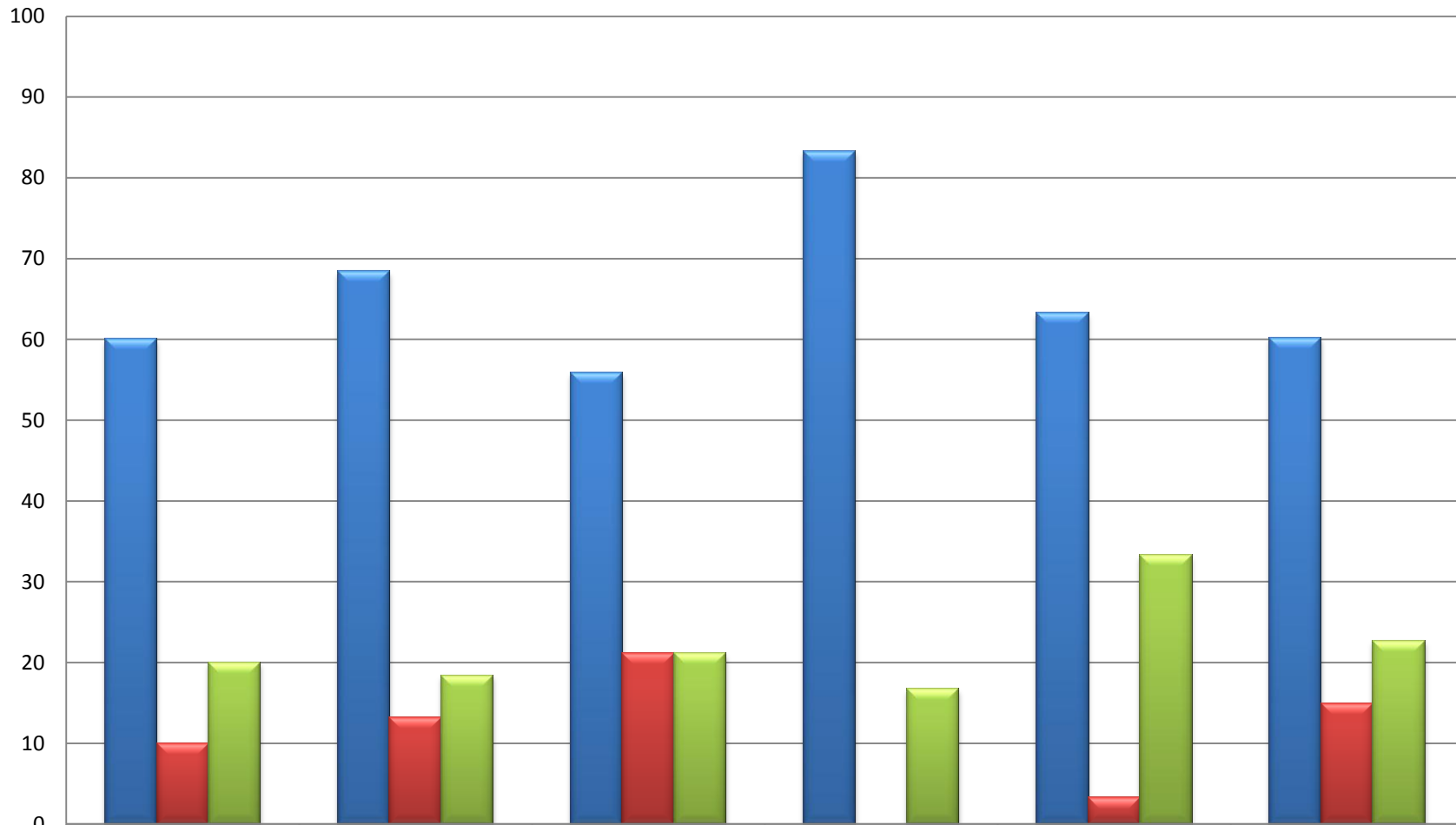
**The institution's administrative structure and services facilitate learning and research/scholarship, foster quality improvement, and support the institution's organization and governance.**

# [P#8/9] 5a. I am well aware of the SUNY Potsdam's Administrative structure and services



	Management n=10	NT Professionals n=38	Teaching n=95	Library n=6	Staff n=30	Cumulative n=181
■ Yes	100	92.1	86.3	83.3	70	85.1
■ No	0	2.6	6.3	16.7	13.3	6.6
■ Don 't know	0	5.3	7.4	0	16.7	7.7

# [P#8/9] 5b. I believe that SUNY Potsdam's Administrative structure and services fulfills the Standards of Excellence outlined by MSCHE



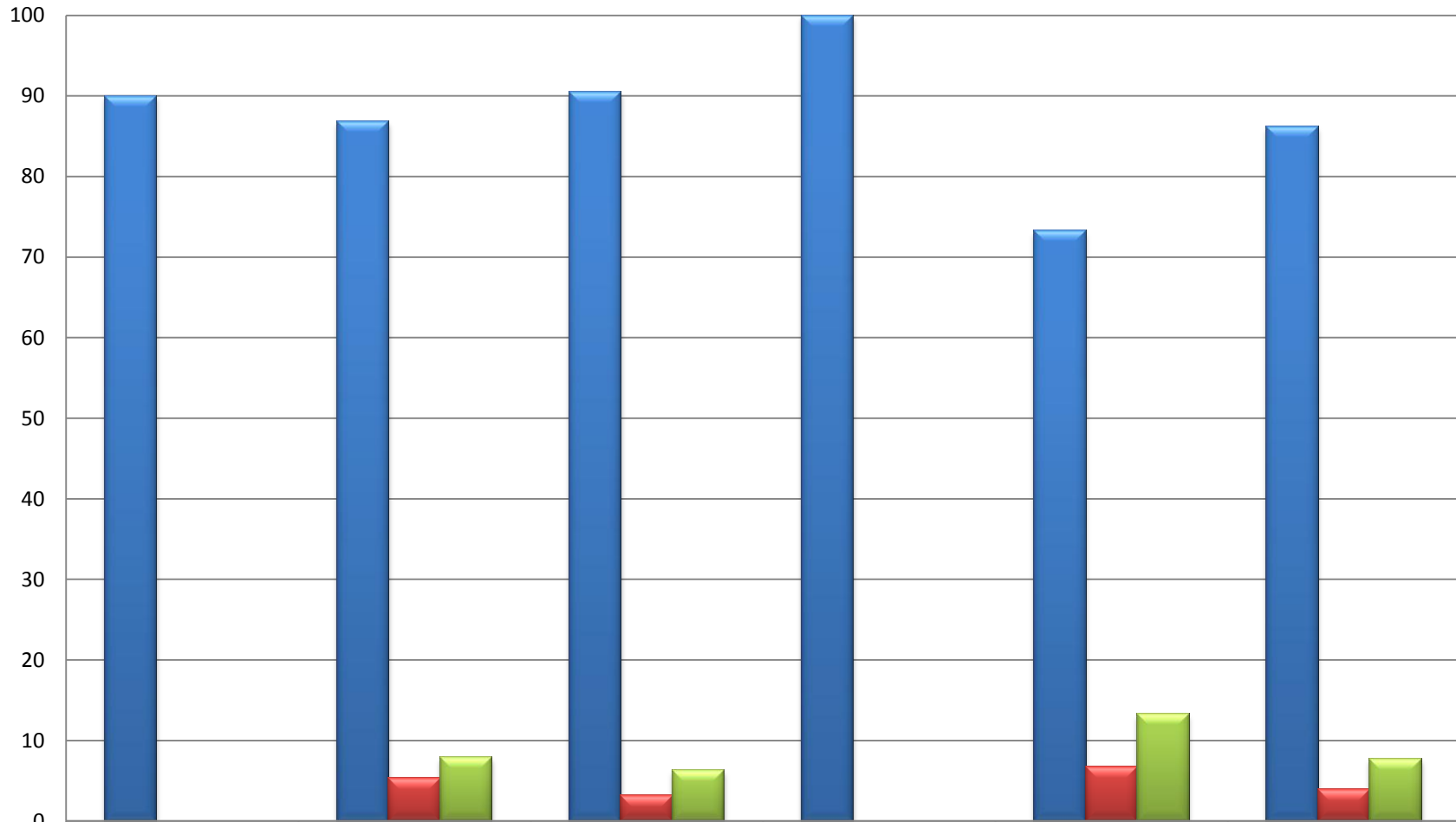
	Management n=10	NT Professionals n=38	Teaching n=95	Library n=6	Staff n=30	Cumulative n=181
■ Yes	60	68.4	55.8	83.3	63.3	60.2
■ No	10	13.2	21.1	0	3.3	14.9
■ Don 't know	20	18.4	21.1	16.7	33.3	22.7

# Priority #8/9

## **Standard 9: Student Support Services**

**The institution provides student support services reasonably necessary to enable each student to achieve the institution's goals for students.**

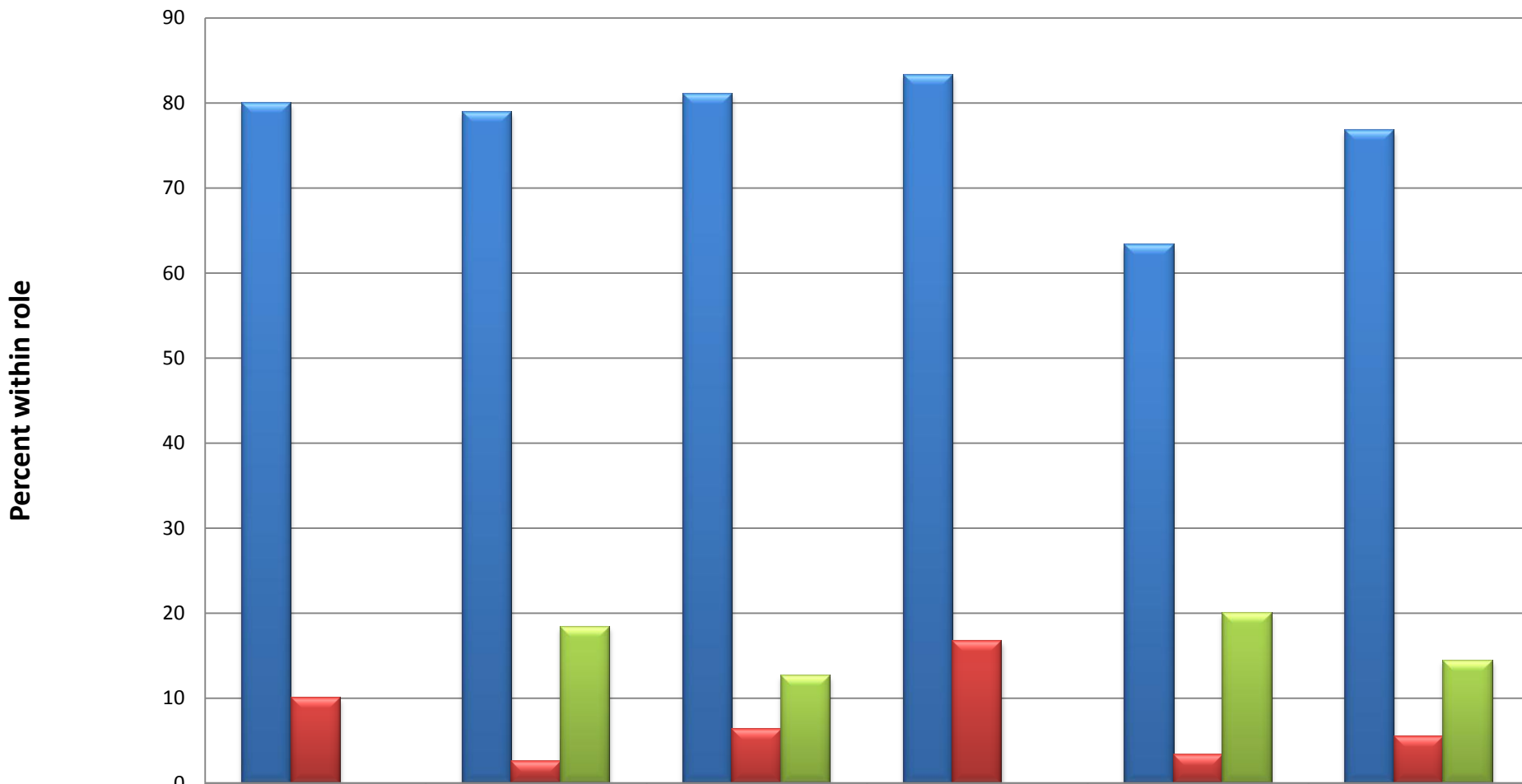
# [P#8/9] 9a. I am well aware of the SUNY Potsdam's provision of Student Support Services



	<b>Management n=10</b>	<b>NT Professionals n=38</b>	<b>Teaching n=95</b>	<b>Library n=6</b>	<b>Staff n=30</b>	<b>Cumulative n=181</b>
<b>Yes</b>	<b>90</b>	<b>86.8</b>	<b>90.5</b>	<b>100</b>	<b>73.3</b>	<b>86.2</b>
<b>No</b>	<b>0</b>	<b>5.3</b>	<b>3.2</b>	<b>0</b>	<b>6.7</b>	<b>3.9</b>
<b>Don 't know</b>	<b>0</b>	<b>7.9</b>	<b>6.3</b>	<b>0</b>	<b>13.3</b>	<b>7.7</b>



**[P#8/9] 9b. I believe that SUNY Potsdam's provision of Student Support Services fulfills the Standards of Excellence outlined by MSCHE**



	<b>Management n=10</b>	<b>NT Professionals n=38</b>	<b>Teaching n=95</b>	<b>Library n=6</b>	<b>Staff n=30</b>	<b>Cumulative n=181</b>
--	----------------------------	--------------------------------------	----------------------	--------------------	-------------------	-----------------------------

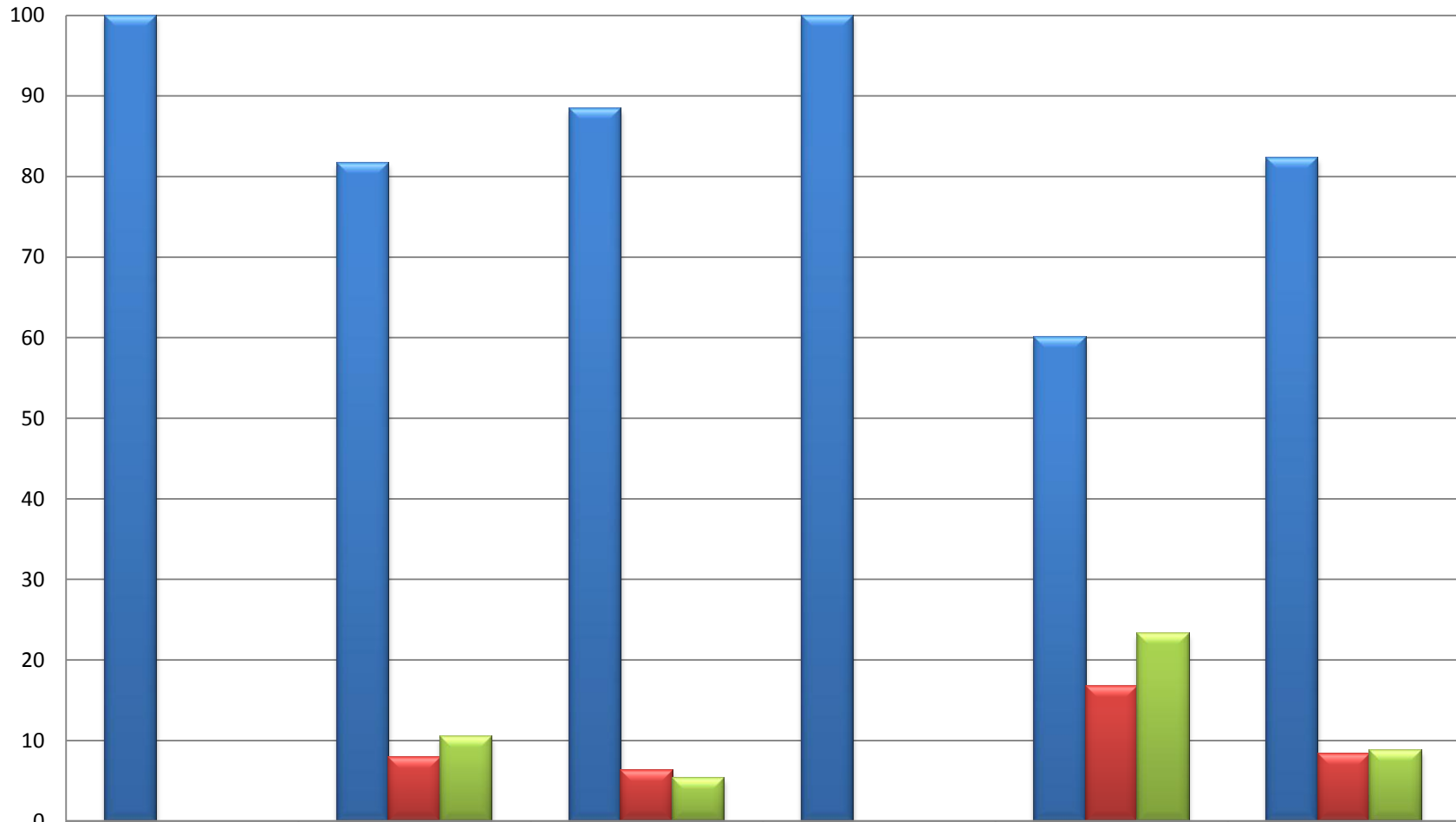
<b>Yes</b>	<b>80</b>	<b>78.9</b>	<b>81.1</b>	<b>83.3</b>	<b>63.3</b>	<b>76.8</b>
<b>No</b>	<b>10</b>	<b>2.6</b>	<b>6.3</b>	<b>16.7</b>	<b>3.3</b>	<b>5.5</b>
<b>Don 't know</b>	<b>0</b>	<b>18.4</b>	<b>12.6</b>	<b>0</b>	<b>20</b>	<b>14.4</b>

# Priority # 10

## Standard 4: Leadership and Governance

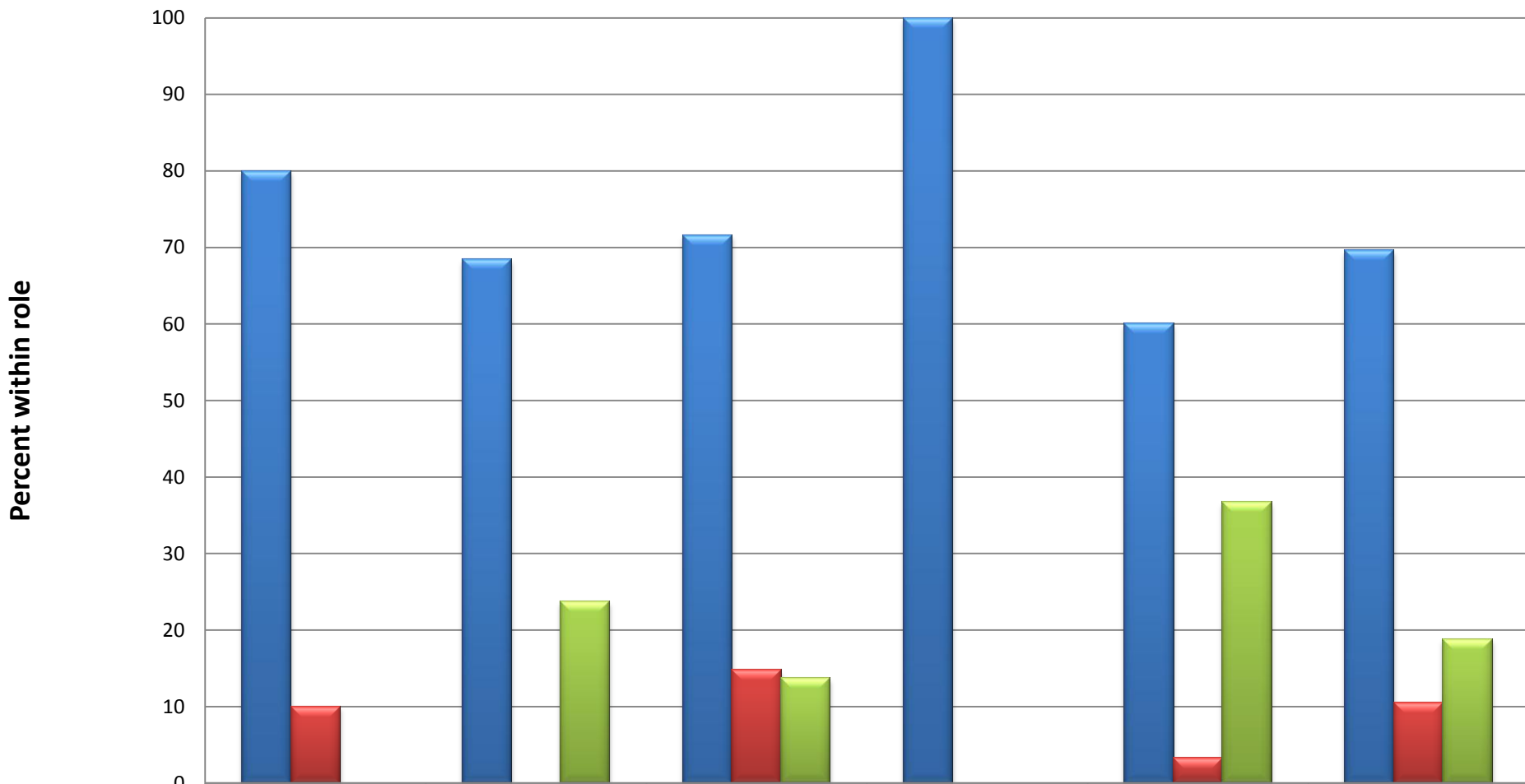
**The institution's system of governance clearly defines the roles of institutional constituencies in policy development and decision-making. The governance structure includes an active governing body with sufficient autonomy to assure institutional integrity and to fulfill its responsibilities of policy and resource development, consistent with the mission of the institution.**

**[P#10] 4a. I am well aware of the SUNY Potsdam's system of governance for policy development and decision making**



	Management n=10	NT Professionals n=38	Teaching n=95	Library n=6	Staff n=30	Cumulative n=181
■ Yes	100	81.6	88.4	100	60	82.3
■ No	0	7.9	6.3	0	16.7	8.3
■ Don 't know	0	10.5	5.3	0	23.3	8.8

## 4b. I believe that SUNY Potsdam's Leadership and Governance system fulfills the Standards of Excellence outlined by MSCHE

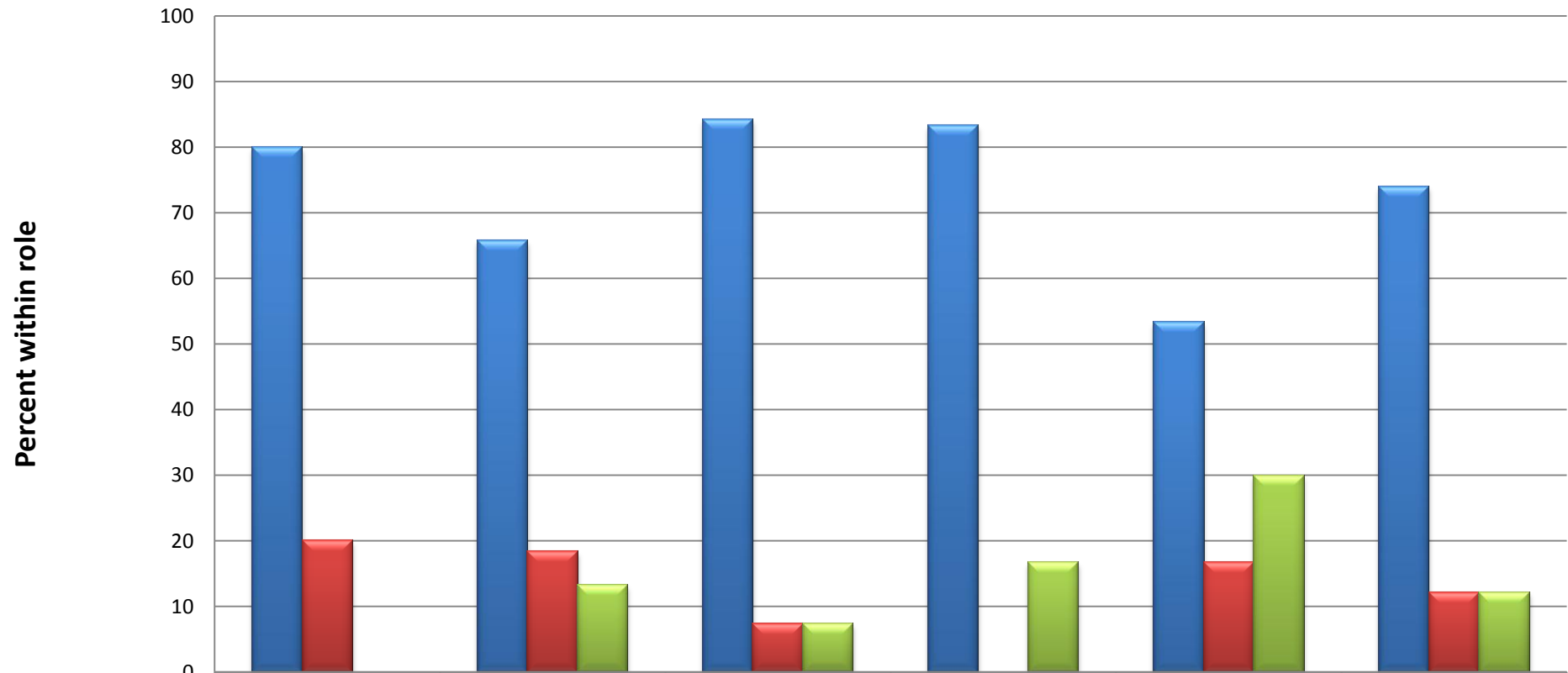


	Management n=10	NT Professionals n=38	Teaching n=95	Library n=6	Staff n=30	Cumulative n=181
■ Yes	80	68.4	71.6	100	60	69.6
■ No	10	0	14.7	0	3.3	10.5
■ Don 't know	0	23.7	13.7	0	36.7	18.8

# Priority #11

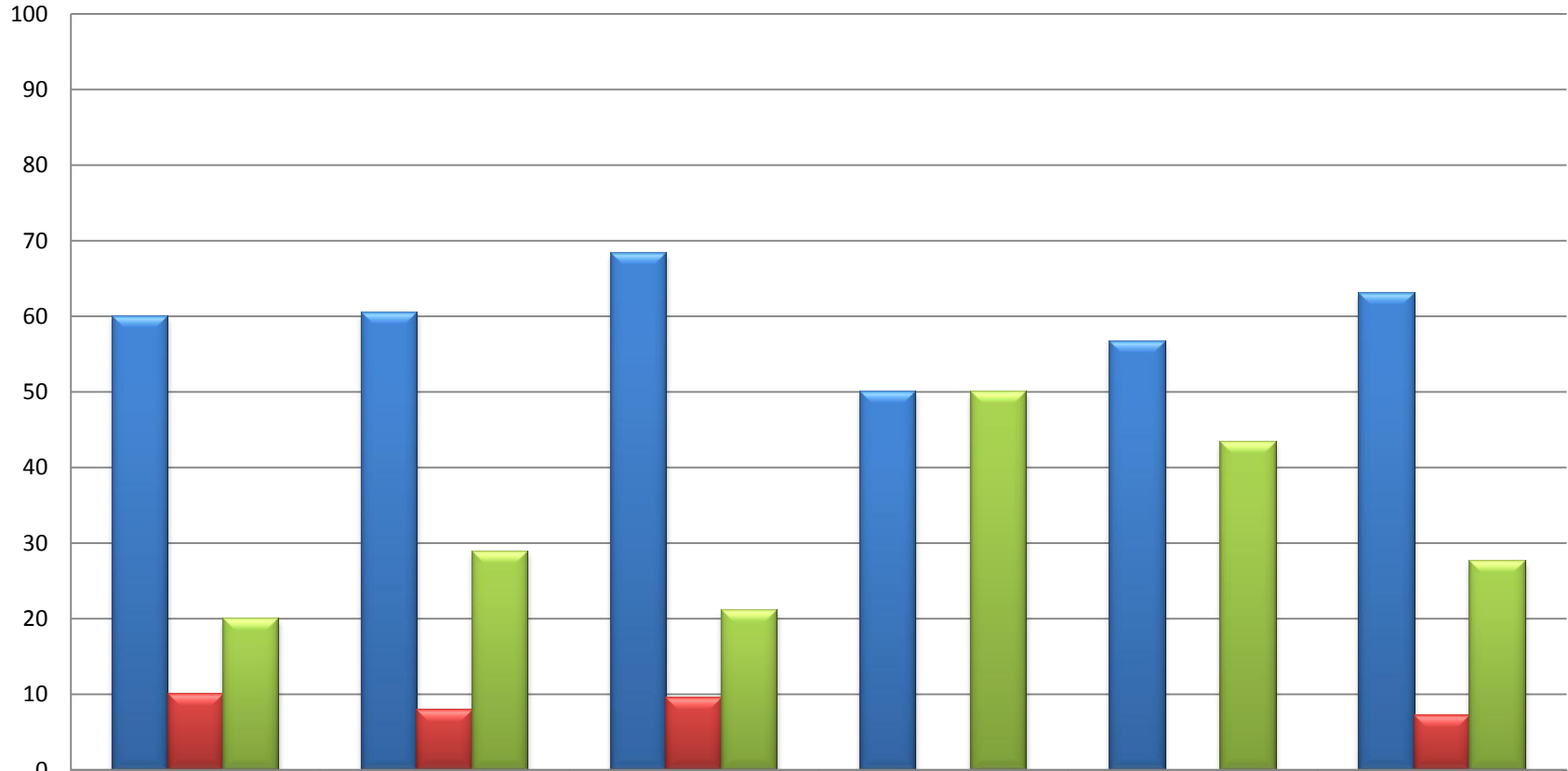
**Standard 14: Assessment of Student Learning**  
**Assessment of student learning demonstrates that, at graduation, or other appropriate points, the institution's students have knowledge, skills, and competencies consistent with institutional and appropriate higher education goals.**

**[P#11] 14a. I am well aware of SUNY Potsdam's Assessment of Student Learning Outcomes Plan as it relates to the expected knowledge, skills, and competencies which are consistent with institutional and appropriate higher education goals**



	Management n=10	NT Professionals n=38	Teaching n=95	Library n=6	Staff n=30	Cumulative n=181
■ Yes	80	65.8	84.2	83.3	53.3	74
■ No	20	18.4	7.4	0	16.7	12.2
■ Don 't know	0	13.2	7.4	16.7	30	12.2

**[P#11] 14b. I believe that SUNY Potsdam's Assessment of Student Learning Outcomes Plan as it relates to the expected knowledge, skills, and competencies which are consistent with institutional and appropriate higher education goals fulfills the Standards of Excellence**



	<b>Management n=10</b>	<b>NT Professionals n=38</b>	<b>Teaching n=95</b>	<b>Library n=6</b>	<b>Staff n=30</b>	<b>Cumulative n=181</b>
<b>■ Yes</b>	<b>60</b>	<b>60.5</b>	<b>68.4</b>	<b>50</b>	<b>56.7</b>	<b>63</b>
<b>■ No</b>	<b>10</b>	<b>7.9</b>	<b>9.5</b>	<b>0</b>	<b>0</b>	<b>7.2</b>
<b>■ Don 't know</b>	<b>20</b>	<b>28.9</b>	<b>21.1</b>	<b>50</b>	<b>43.3</b>	<b>27.6</b>

# Priority #12

## Standard 1: Mission and Goals

**The institution's mission clearly defines its purpose within the context of higher education and indicates who the institution serves and what it intends to accomplish. This institution's stated goals, consistent with the aspirations and expectations of higher education, clearly specify how the institution will fulfill its mission. The mission and goals are developed and recognized by the institution with the participation of its members and its governing body and are used to develop and shape its programs and practices and to evaluate its effectiveness.**



# **College Mission Statement**

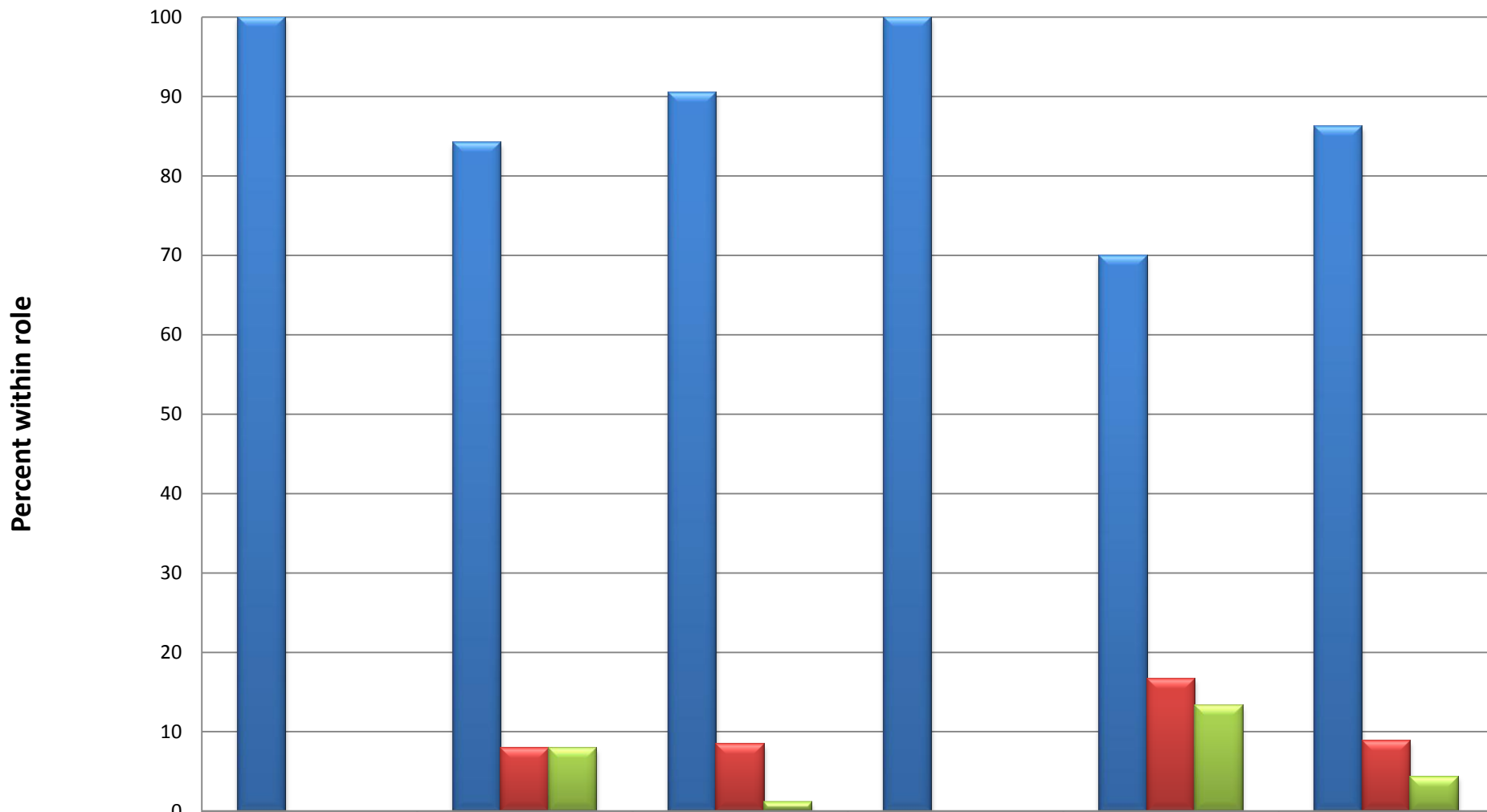
## **SUNY Potsdam**

**The State University of New York at Potsdam prepares students to act as engaged global citizens and to lead lives enriched by critical thought, creativity, and discovery. As an inclusive scholarly community rooted in our historic role in providing exemplary teacher and music education and our leadership in the fine and performing arts, we are committed to the liberal arts and sciences as an academic foundation for all students. With an abiding sense of responsibility to our region and to the world beyond, SUNY Potsdam fosters an appreciation of and respect for the variety of human experience.**

Endorsed by Leadership Council 9/28/06

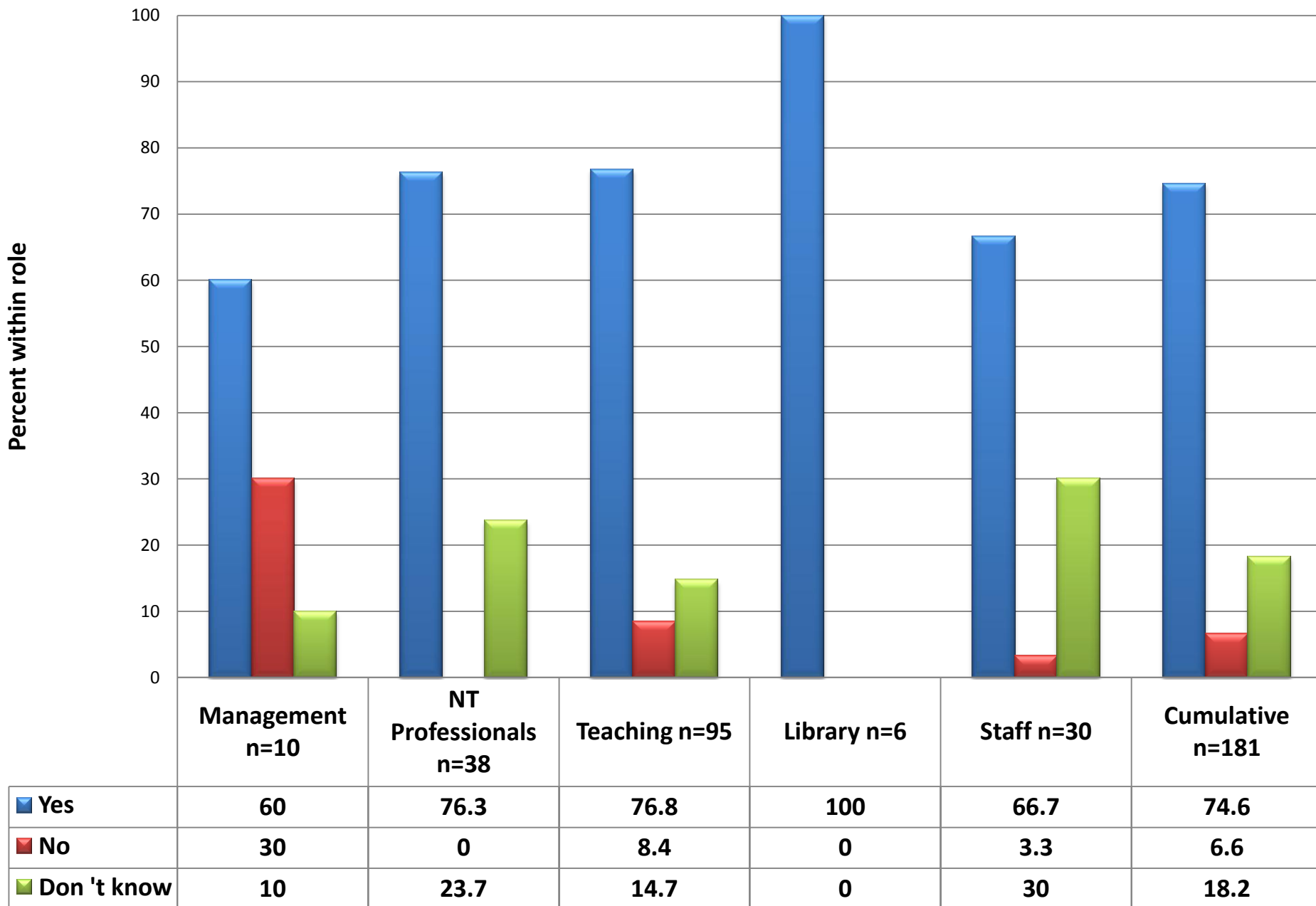
Endorsed by College Council 11/15/06

# [P#12] 1a. I am well aware of the Mission and Goals of SUNY Potsdam



	Management n=10	NT Professionals n=38	Teaching n=95	Library n=6	Staff n=30	Cumulative n=181
■ Yes	100	84.2	90.5	100	70	86.2
■ No	0	7.9	8.4	0	16.7	8.8
■ Don 't know	0	7.9	1.1	0	13.3	4.4

## [P#12] 1b. I believe that SUNY Potsdam's Mission and Goals fulfills the Standards of Excellence outlined by MSCHE

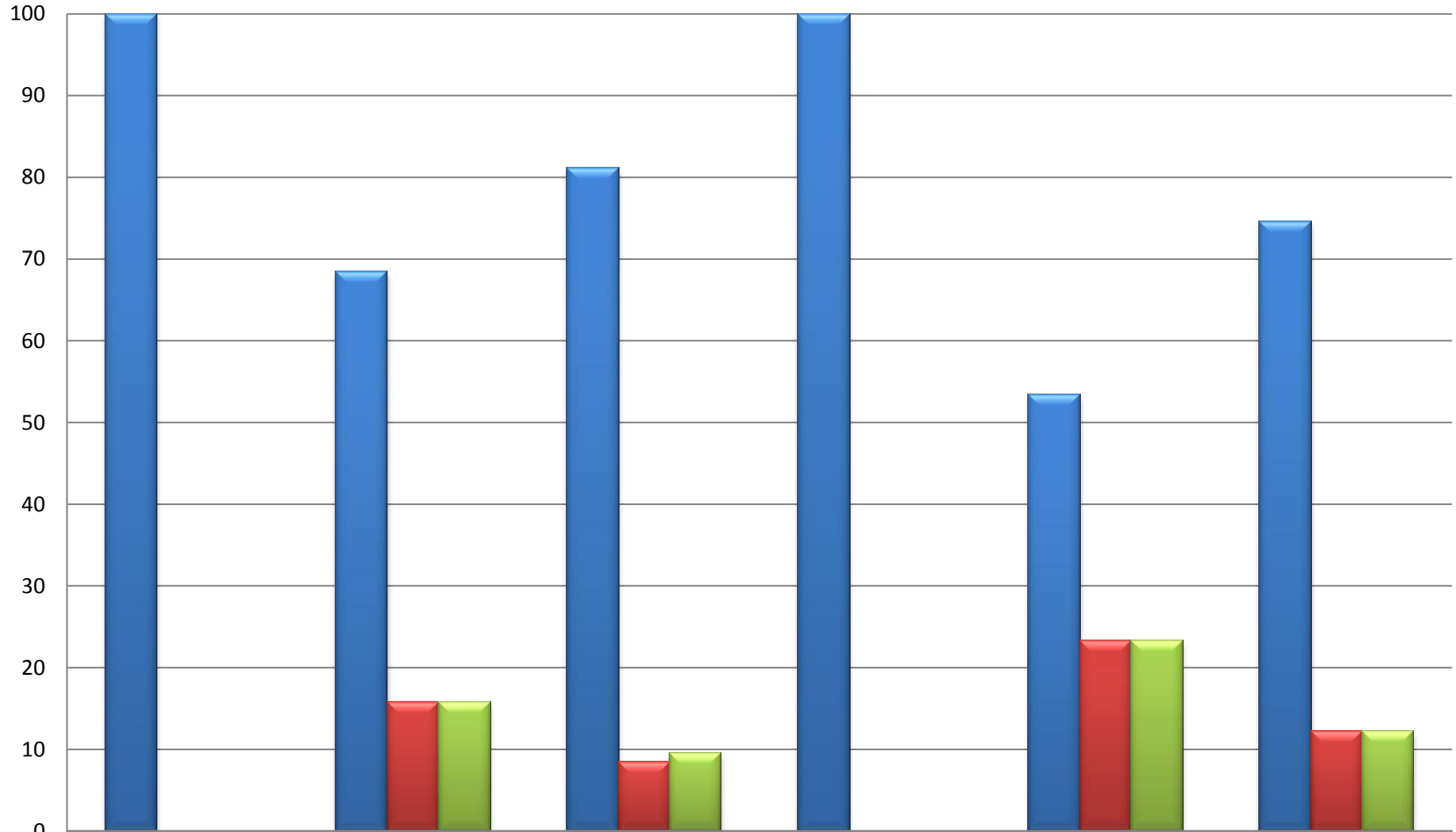


# Priority # 13

## **Standard 7: Institutional Assessment**

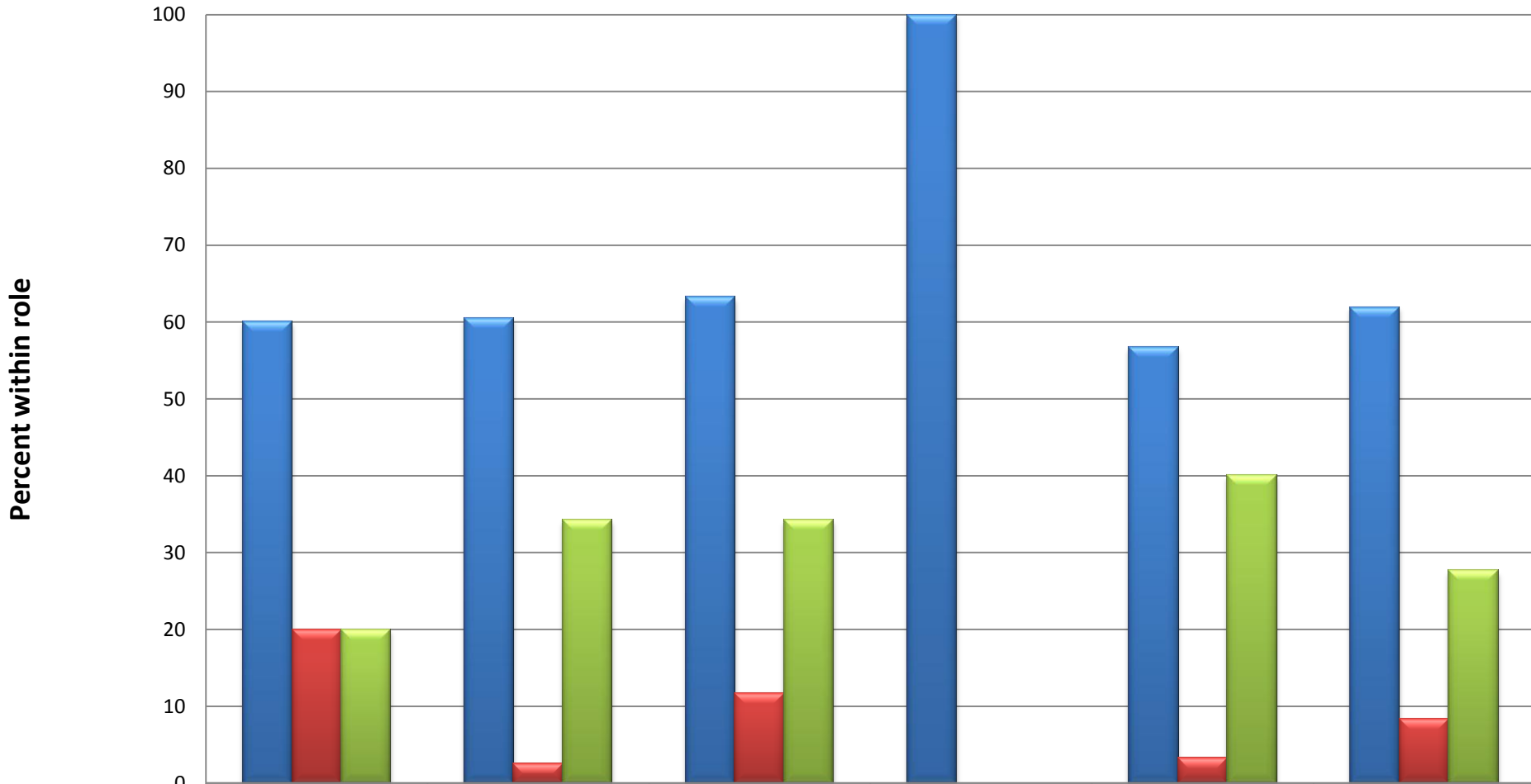
**The institution has developed and implemented an assessment process that evaluates its overall effectiveness in achieving its mission and goals and its compliance with accreditation standards.**

# [P#13] 7a. I am well aware of the SUNY Potsdam's process of Institutional Assessment



	Management n=10	NT Professionals n=38	Teaching n=95	Library n=6	Staff n=30	Cumulative n=181
■ Yes	100	68.4	81.1	100	53.3	74.6
■ No	0	15.8	8.4	0	23.3	12.2
■ Don 't know	0	15.8	9.5	0	23.3	12.2

# [P#13] 7b. I believe that SUNY Potsdam's process of Institutional Assessment fulfills the Standards of Excellence outlined by MSCHE



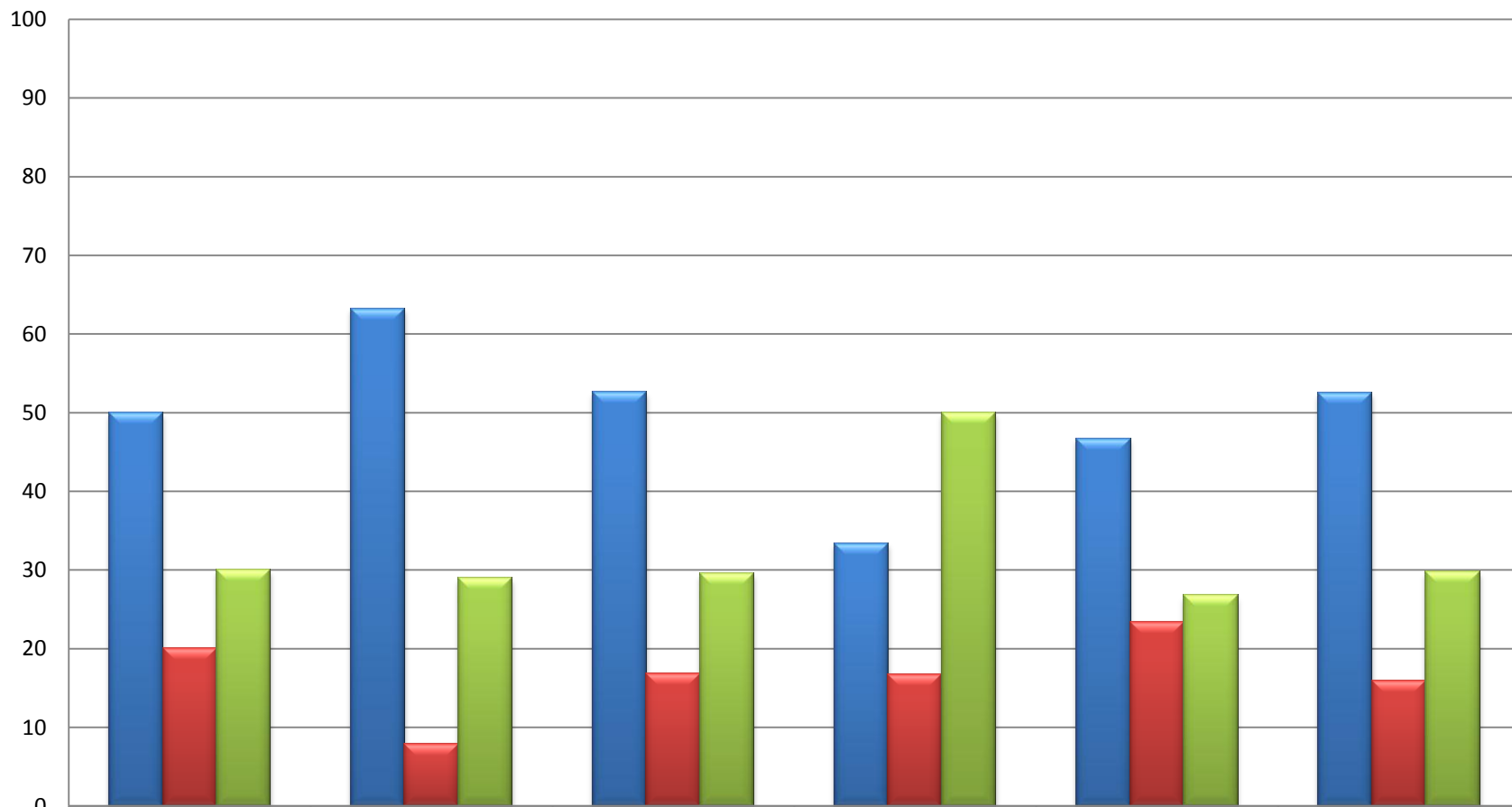
	Management n=10	NT Professionals n=38	Teaching n=95	Library n=6	Staff n=30	Cumulative n=181
■ Yes	60	60.5	63.2	100	56.7	61.9
■ No	20	2.6	11.6	0	3.3	8.3
■ Don 't know	20	34.2	34.2	0	40	27.6

# Priority #14

## **Standard 13: Related Educational Activities**

**The institution's programs or activities that are characterized by particular content, focus, location, mode of delivery, or sponsorship meet appropriate standards.**

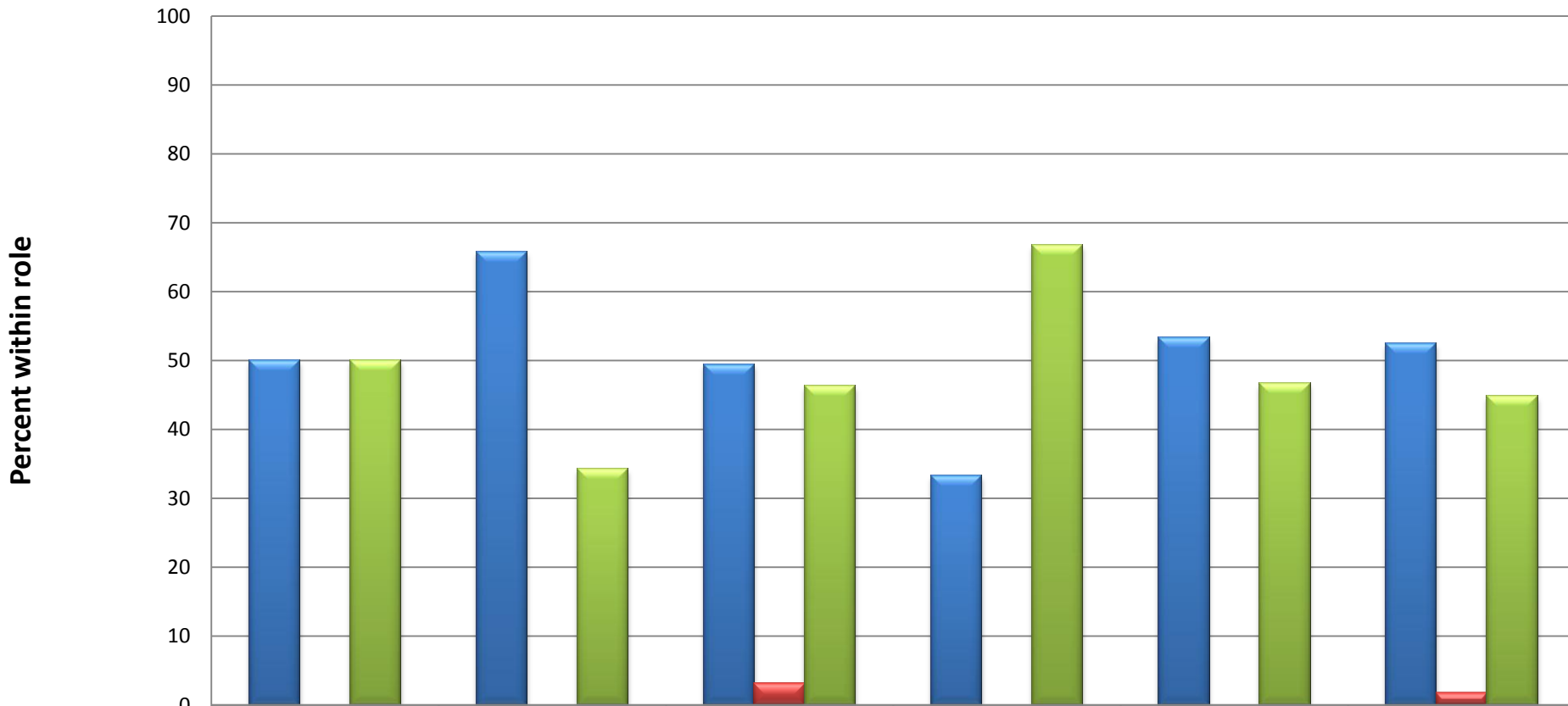
**[P#14] 13a. I am well aware of the appropriate standards for SUNY  
Potsdam's Related Educational Activities as it relates to the particular  
content, focus, location, mode of delivery or sponsorship**



	Management n=10	NT Professionals n=38	Teaching n=95	Library n=6	Staff n=30	Cumulative n=181
■ Yes	50	63.2	52.6	33.4	46.7	52.5
■ No	20	7.9	16.8	16.7	23.3	16
■ Don 't know	30	28.9	29.5	50	26.7	29.8



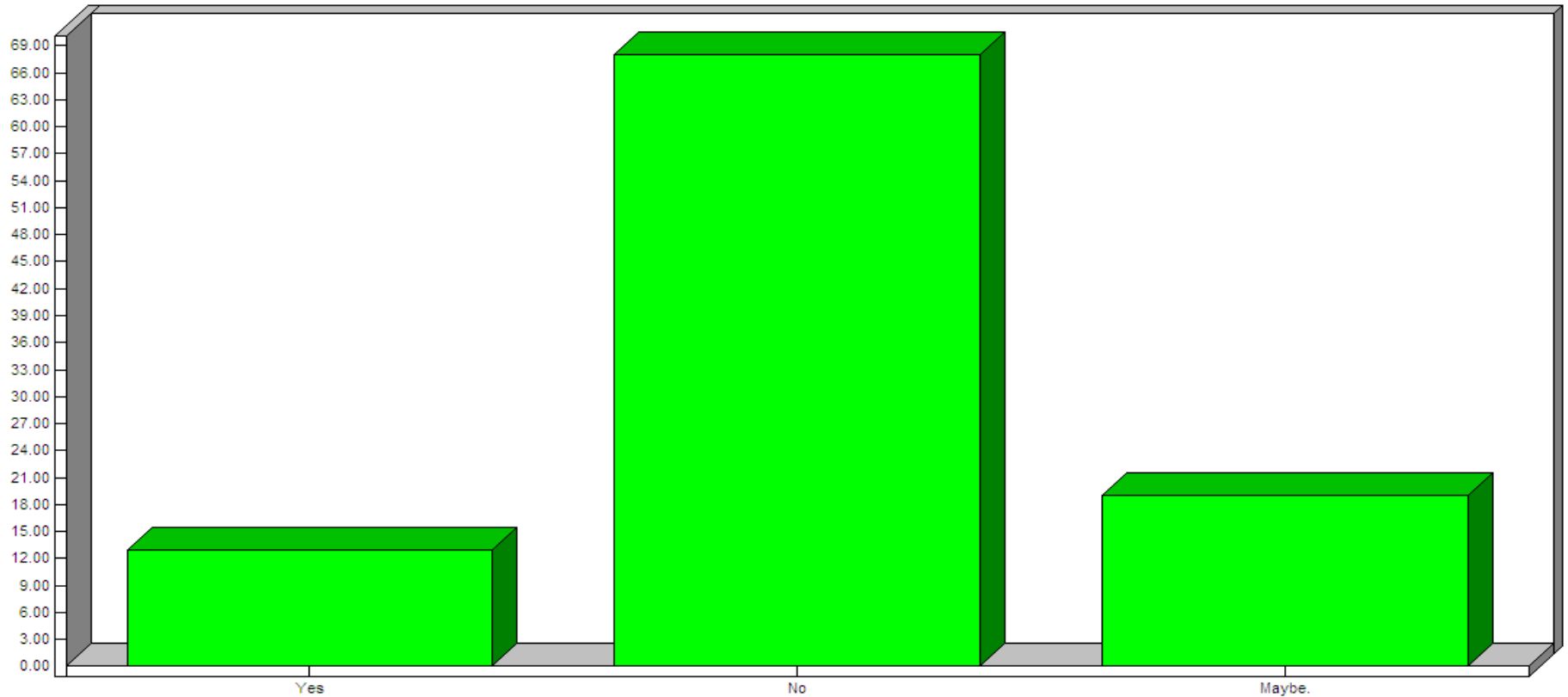
**[P#14] 13b. I believe that the standards for SUNY Potsdam's Related Educational Activities as it relates to the particular content, focus, location, mode of delivery or sponsorship fulfills the Standards of Excellence outlined by MSCHE**



	Management n=10	NT Professionals n=38	Teaching n=95	Library n=6	Staff n=30	Cumulative n=181
■ Yes	50	65.8	49.5	33.3	53.3	52.5
■ No	0	0	3.2	0	0	1.7
■ Don 't know	50	34.2	46.3	66.7	46.7	44.8

# 15a. Would you be interested in participating in the Middle States Self-Study?

Question 15a



**Yes 12.3%**

**No 65.9%**

**Maybe. 18.4%**