



September 25<sup>th</sup> , 2012

***Campus Academic  
Assessment  
Committee  
(CAAC)***

# Agenda

## WELCOME:

(Please be sure you have signed the attendance sheet )

## BUSINESS:

1. Minutes of May 5<sup>th</sup> 2012 at  
[http://www.potsdam.edu/offices/ie/assessment/upload/05\\_15\\_12-Academic\\_Assessment- Minutes.pdf](http://www.potsdam.edu/offices/ie/assessment/upload/05_15_12-Academic_Assessment-Minutes.pdf)
2. 3 year reporting cycle and action planning
  - Department/Program Assessment Plans with any changes are due September 30, 2012
  - Reports for Departments/Programs in 1<sup>st</sup> year of cycle are due August 31, 2012
3. Assessment of SUNY Potsdam's Gen Ed student learning outcomes Spring 2012 for (FW/IL), (WI) (AC), (AE), (SA) – Data presentation and discussion- Bruce
4. Announcement of Best Practices Workshops for Gen Ed Designators FM, PE, WC, SB, SP,& LB - - Claire Machia
5. NSSE – Spring 2012 – Data presentation and discussion – Bruce
6. Student Opinion Survey – SOS – Spring 2012 Judy Singh
7. Mini-grant announcement
- 8 . Other Items

Next Meeting – December 12<sup>th</sup> 3:pm

## ***2. Announcement: Assessment of Student Learning Outcomes – SUNY Potsdam Mini-Grant Announcement for 2012-2013***

- Enhance and support a culture of assessment at SUNY Potsdam by encouraging collaboration, research, and scholarship that focus on the teaching-learning process.
- Encourage and support faculty involvement in the assessment of student learning process.
- Encourage the use of assessment results to improve programs and individual student learning.
- Encourage the development and implementation of improved assessment instruments and/or assessment activities where assessment data reveals that students are not meeting achievement standards for specific outcomes included in the Department/Program Student Learning Outcome Assessment Plans.

# ***Four mini-grants available***

- 1. Two** grants will be awarded to proposals that address improving the achievement or performance of students in a Department/Program's stated student **learning outcomes** within the *Department/Program Student Learning Assessment Plan*.
- 2. One** grant will be awarded to the proposal that addresses improving the achievement or performance of students in a student learning outcome from one of the **General Education designators**.
- 3. One** grant will be awarded to the proposal that addresses improving the achievement or performance of students in a student learning outcome related to **Information Literacy (IL)** .

# ***3. Reflections on a process***

## **Recommendation:**

- Enhance communication efforts to students and administrators to make more transparent the use of the direct evidence of student learning that informs changes to the academic programs.

## 5. Three-year Reporting Cycle

SUNY Potsdam Academic Department & Program  
Assessment of Student Learning Outcomes Reporting and Action Plan Schedule  
2012 to 2027 (Revised April 2012)

Cycle Year	1	2	3	1	2	3	1	2	3	1	2	3	1	2	3	1
Dept/Program	Sept. 30 2012	Sept. 30 2013	Sept. 30 2014	Sept. 30 2015	Sept. 30 2016	Sept. 30 2017	Sept. 30 2018	Sept. 30 2019	Sept. 30 2020	Sept. 30 2021	Sept. 30 2022	Sept. 30 2023	Sept. 30 2024	Sept. 30 2025	Sept. 30 2026	Sept. 30 2027
Anthro	X			X			X			X			X			X
Art	X			X			X			X			X			X
Biology	X			X			X			X			X			X
Chemistry	X			X			X			X			X			X
Comp Sci	X			X			X			X			X			X
Economics	X			X			X			X			X			X
Eng & Comm	X			X			X			X			X			X
Enviro St	X			X			X			X			X			X
Geology	X			X			X			X			X			X
History	X			X			X			X			X			X
Mod Lang	X			X			X			X			X			X
Mathematics	X			X			X			X			X			X
Child/Erly BA		X			X			X			X			X		
Childhd MST		X			X			X			X			X		
EngSecBA/MST		X			X			X			X			X		
ForLang		X			X			X			X			X		
LitrySpec		X			X			X			X			X		
MathBA/MST		X			X			X			X			X		
SciEdBA/MST		X			X			X			X			X		
Spec Ed		X			X			X			X			X		
C&I MSED		X			X			X			X			X		
Music Ed		X			X			X			X			X		
Bus Admin		X			X			X			X			X		
Comm Health		X			X			X			X			X		
SocStuBA/MST		X			X			X			X			X		

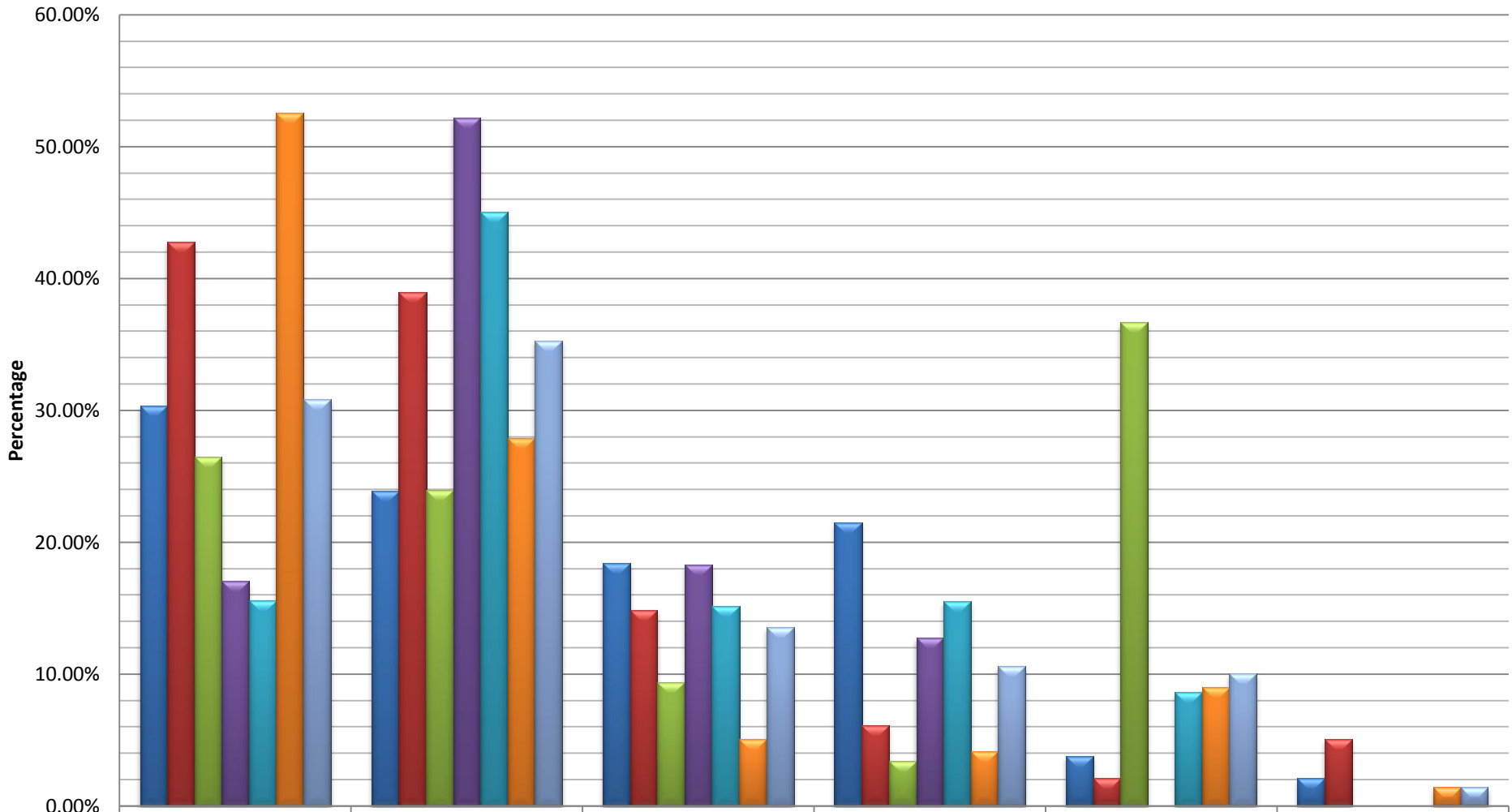


## ***4. Gen Ed Assessment Highlights***

- Assessment of SUNY Potsdam's Gen Ed student learning outcomes Spring 2012 for First Year Writing and Information Literacy (**FW/IL**), **Writing Intensive(WI)**, **Aesthetic Critical and Discriminative (AC)**, **Aesthetic Experiential(AE)**, **Social Sciences(SA)**



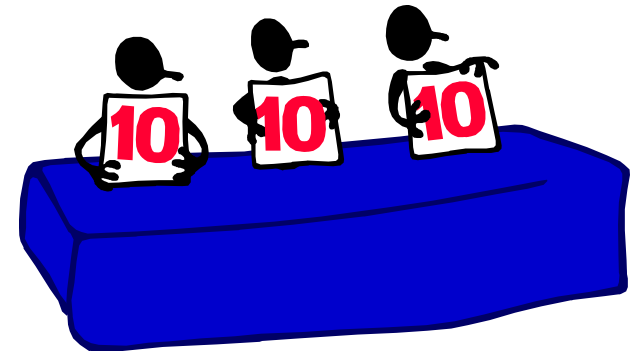
# Meta-Evaluation of Assessment Data for Gen Ed Designators Spring 2012



	Exceeds Standards	Meets Standards	Approaching Standards	Not Meeting Standards	Not Assessed	Not Taught
SA	30.38%	23.90%	18.43%	21.53%	3.78%	2.13%
WI	42.78%	38.98%	14.83%	6.10%	2.10%	5.08%
AC	26.50%	23.97%	9.38%	3.42%	36.68%	0.00%
FW	17.03%	52.20%	18.30%	12.75%	0.00%	0.00%
IL	15.64%	45.06%	15.16%	15.52%	8.62%	0.00%
AE	52.60%	27.85%	5.07%	4.13%	9.00%	1.43%
Overall	30.82%	35.33%	13.53%	10.57%	10.03%	1.44%

# Next Assessment Cycle Best Practices Workshops For Spring 2013

- FM: November 27<sup>th</sup> 9:am
- PE: November 27<sup>th</sup> 11:a.m.
- WC: November 29<sup>th</sup> 3:p.m.
- SB: November 28<sup>th</sup> 1:30 p.m.
- SP: November 28<sup>th</sup> 3:p.m.
- LB: November 29<sup>th</sup> 1:30 p.m.



## ***5. Department/Program Assessment Plans 2012-2013 and Reports & Action Plans 2011-2012:***

- 1. 2011-12 Assessment Reports due for those in 1<sup>st</sup> year of cycle - August 31, 2012**
- 2. 2012-2013 Department/Program Assessment Plans due September 30, 2012**
  - a. Consider Potsdam Graduate changes**
  - b. Any changes to learning outcomes and/or assessment activities**
  - c. SOEPS – changes in SPA expectations**

# ***6. NSSE – Spring 2012 –***

## **Updated NSSE survey coming in 2013!**

- An updated version of NSSE – NSSE 2.0 – will launch in 2013. The update will maintain NSSE’s signature focus on providing diagnostic and actionable information related to engagement in effective educational practice, while incorporating what we have learned from more than a decade of research and experience with NSSE.

# NSSE Indicators of Effective Educational Practice

**Level of Academic Challenge**

**Active & Collaborative Learning**

**Enriching Educational Experiences**

**Student – Faculty Interaction**

**Supportive Campus Environment**

# Level of Academic Challenge (LAC)

- Hours spent preparing for class (studying, reading, writing, doing homework or lab work, etc.)
- Number of assigned textbooks, books, or book-length packs of course readings
- Number of written papers or reports of 20 pages or more, between 5 and 19 pages, and fewer than 5 pages
- Coursework emphasizes: **Analysis** of the basic elements of an idea, experience or theory
- Coursework emphasizes: **Synthesis** and organizing of ideas, information, or experiences into new, more complex interpretations and relationships
- Coursework emphasizes: **Making judgments** about the value of information, arguments, or methods
- Coursework emphasizes: **Applying** theories or concepts to practical problems or in new situations
- Working harder than you thought you could to meet an instructor's standards or expectations
- Campus environment emphasizes: Spending significant amount of time studying and on academic work

# Level of Academic Challenge (LAC) – SUNY Potsdam NSSE 2012

## Mean Comparisons

SUNY Potsdam compared with:

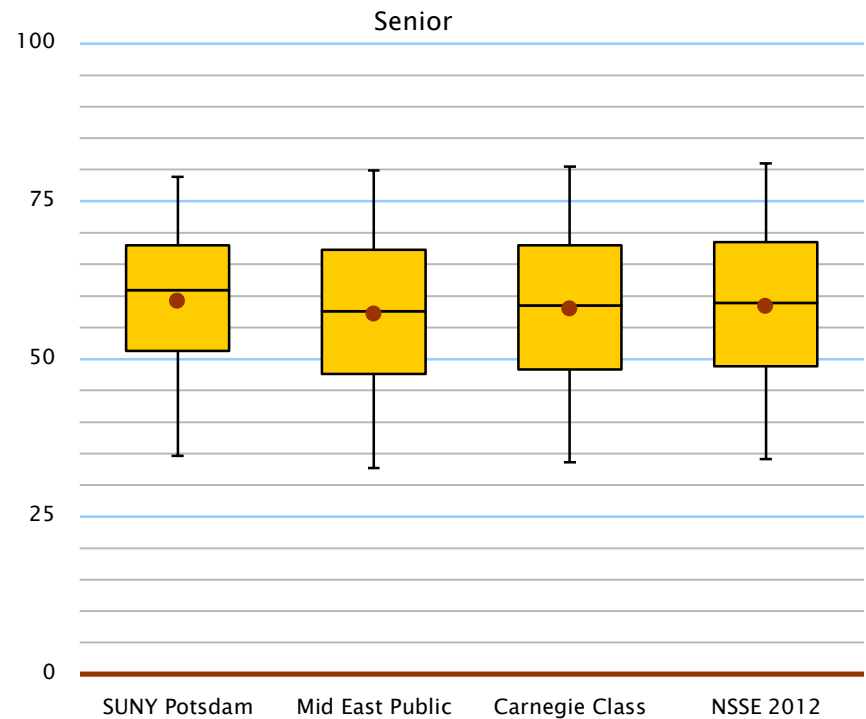
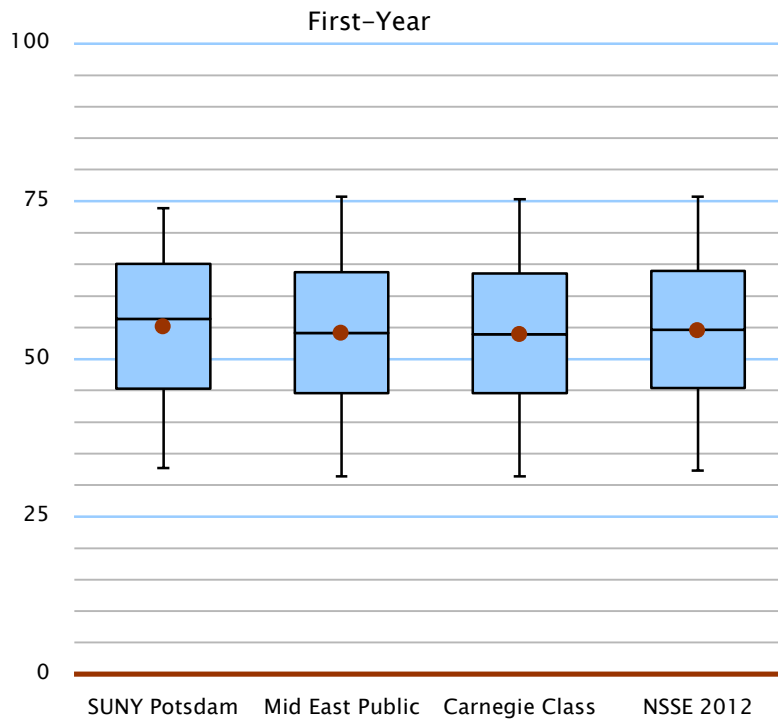
Class	SUNY Potsdam		Mid East Public			Carnegie Class		NSSE 2012		Effect Size <sup>c</sup>	
	Mean <sup>a</sup>		Mean <sup>a</sup>	Sig <sup>b</sup>	Effect Size <sup>c</sup>	Mean <sup>a</sup>	Sig <sup>b</sup>	Effect Size <sup>c</sup>	Mean <sup>a</sup>		Sig <sup>b</sup>
First-Year	55.1		54.0		.07	53.8		.09	54.5		.04
Senior	59.1		57.1		.14	58.0		.08	58.4		.05

<sup>a</sup> Weighted by gender and enrollment status (and by institution size for comparison groups)

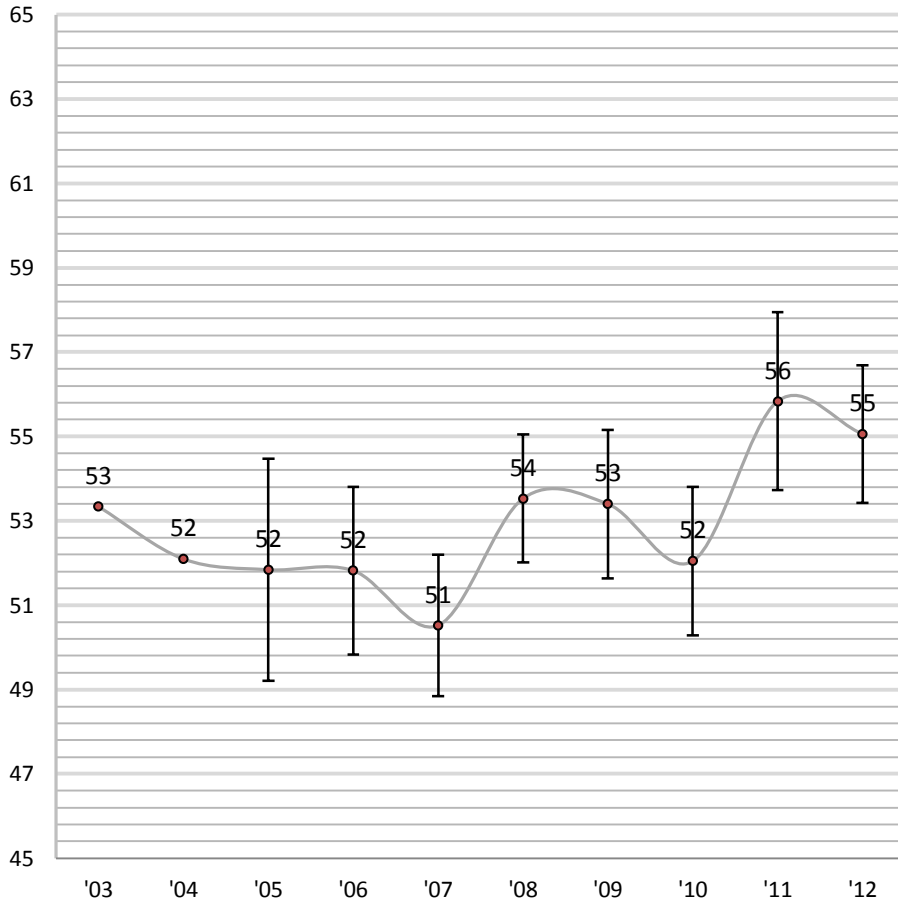
<sup>b</sup> \* p<.05 \*\* p<.01 \*\*\*p<.001 (2-tailed)

<sup>c</sup> Mean difference divided by the pooled standard deviation

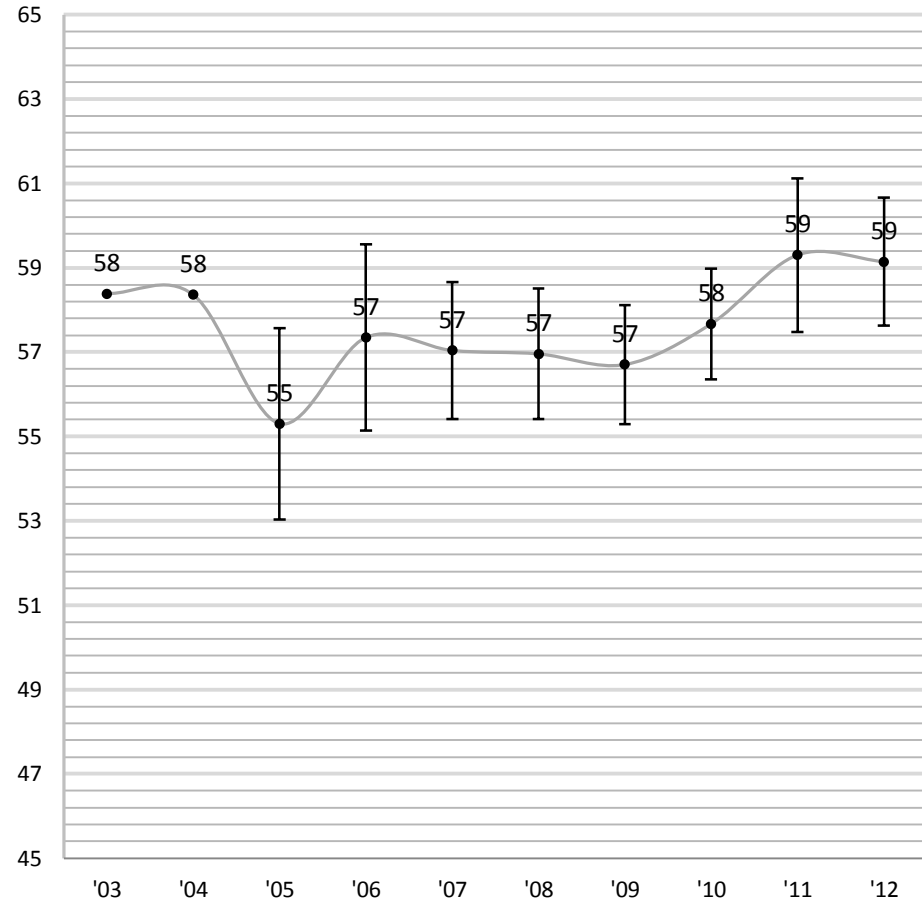
## Distributions of Student Benchmark Scores



**FY Level of Academic Challenge (LAC) Trends  
2003-2012**



**SR Level of Academic Challenge (LAC) Trends  
2003-2012**





# Active and Collaborative Learning (ACL)

- Asked questions in class or contributed to class discussions
- Made a class presentation
- Worked with other students on projects **during class**
- Worked with classmates **outside of class** to prepare class assignments
- Tutored or taught other students (paid or voluntary)
- Participated in a community-based project (e.g., service learning) as part of a regular course
- Discussed ideas from your readings or classes with others outside of class (students, family members, co-workers, etc.)

# Active and Collaborative Learning (ACL) - SUNY Potsdam NSSE 2012

## Mean Comparisons

SUNY Potsdam compared with:

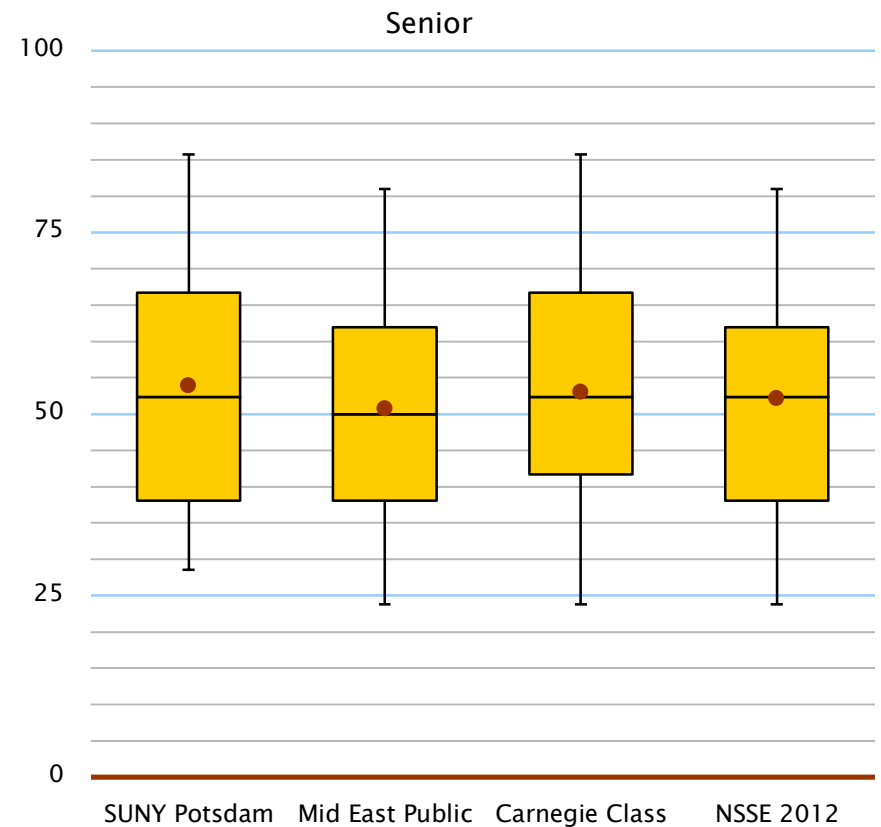
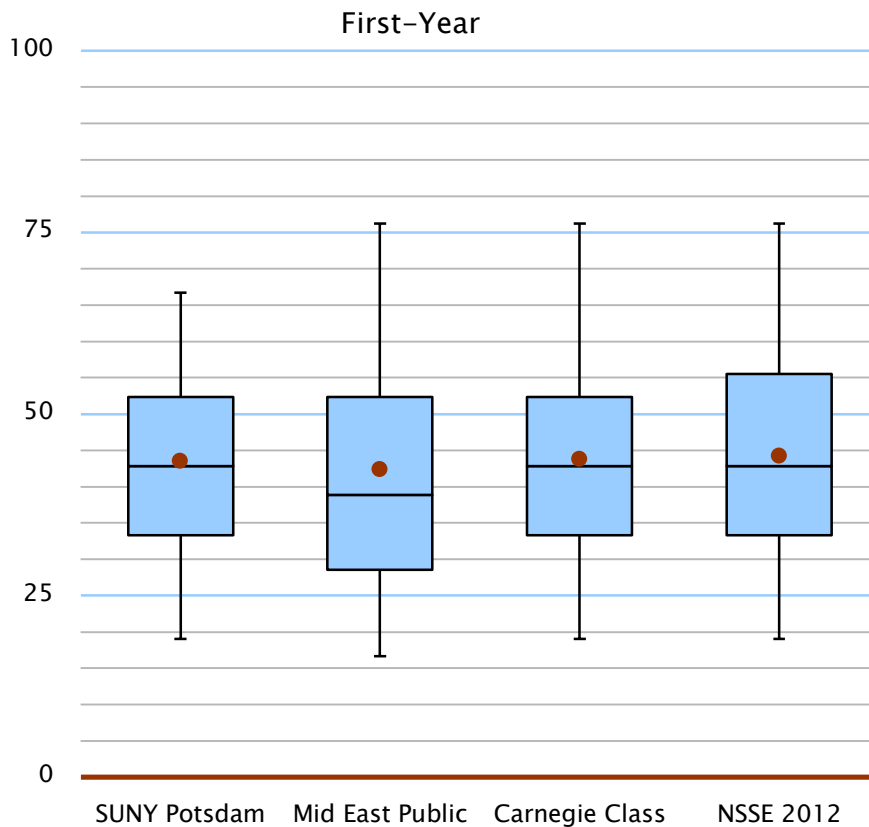
Class	SUNY Potsdam		Mid East Public		Effect Size <sup>c</sup>	Carnegie Class		NSSE 2012		Effect Size <sup>c</sup>
	Mean <sup>a</sup>		Mean <sup>a</sup>	Sig <sup>b</sup>		Mean <sup>a</sup>	Sig <sup>b</sup>	Mean <sup>a</sup>	Sig <sup>b</sup>	
First-Year	43.5		42.3		.07	43.8		44.2		-.04
Senior	53.9		50.7	*	.18	53.0		52.1		.10

<sup>a</sup> Weighted by gender and enrollment status (and by institution size for comparison groups)

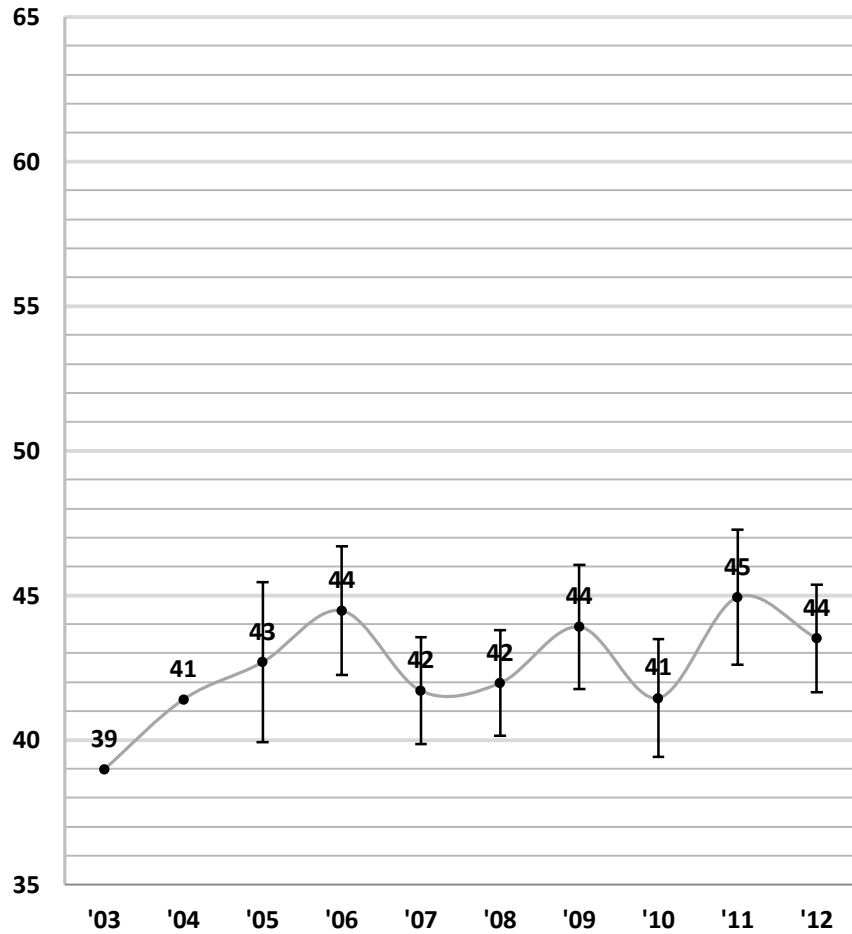
<sup>b</sup> \* p<.05 \*\* p<.01 \*\*\*p<.001 (2-tailed)

<sup>c</sup> Mean difference divided by the pooled standard deviation

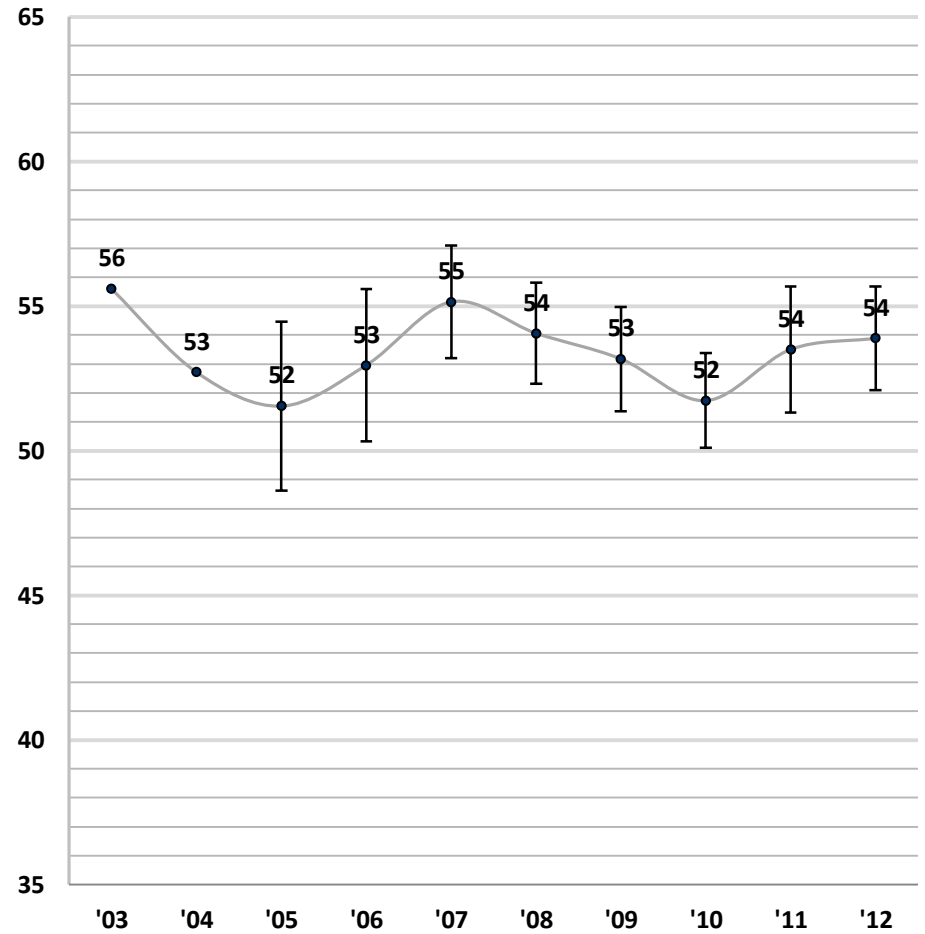
## Distributions of Student Benchmark Scores



**FY Active and Collaborative Learning (ACL) Trends  
2003-2012**



**SR Active and Collaborative Learning (ACL) Trends  
2003-2012**



# Student Faculty Interaction (SFI)

- Discussed grades or assignments with an instructor
- Talked about career plans with a faculty member or advisor
- Discussed ideas from your readings or classes with faculty members outside of class
- Worked with faculty members on activities other than coursework (committees, orientation, student-life activities, etc.)
- Received prompt written or oral feedback from faculty on your academic performance
- Worked on a research project with a faculty member outside of course or program requirements

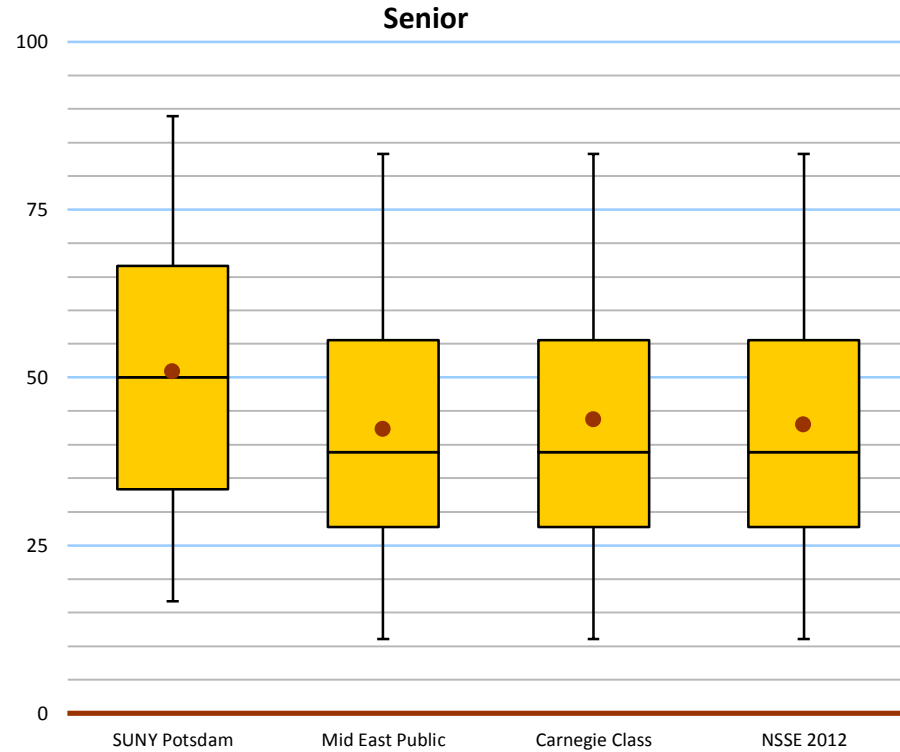
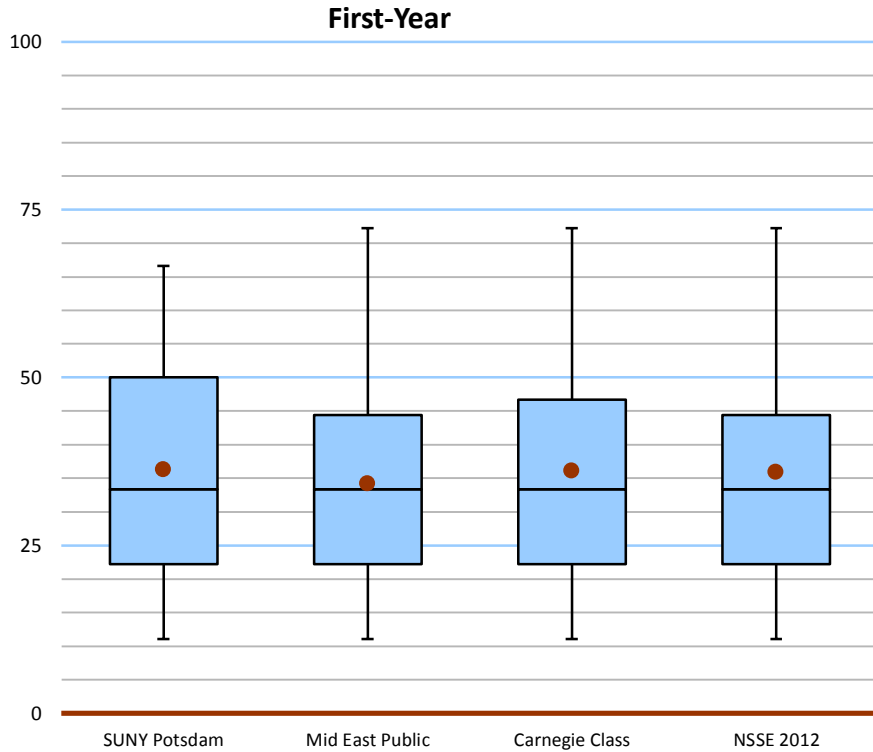
# Student-Faculty Interaction (SFI) - SUNY Potsdam NSSE 2012

## Mean Comparisons

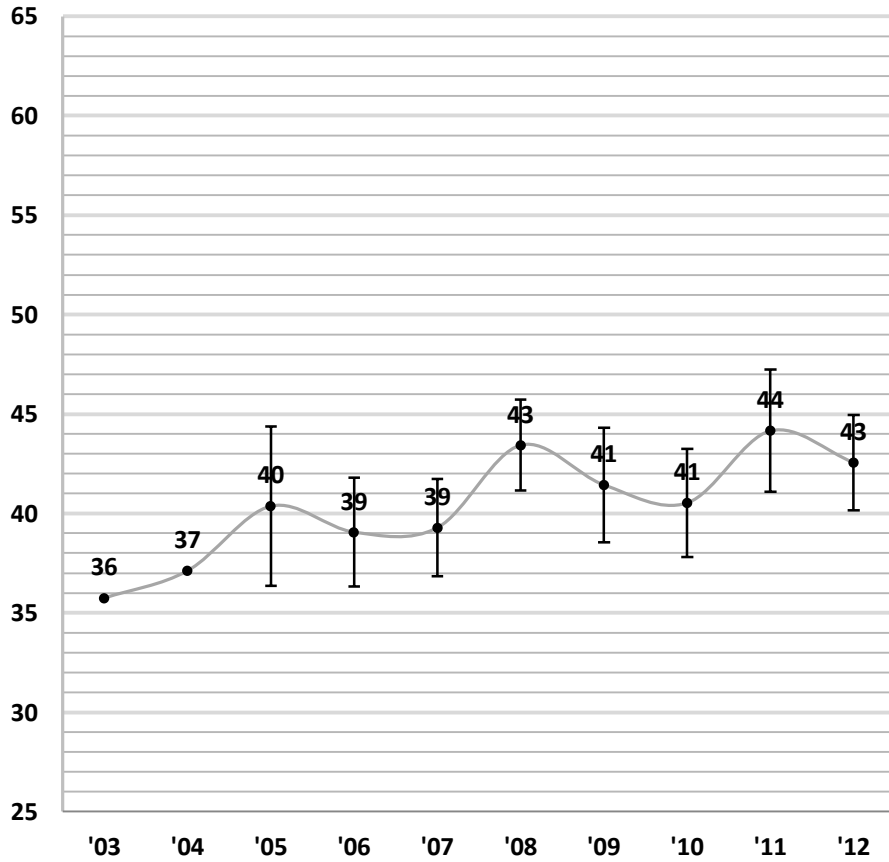
SUNY Potsdam compared with:

Class	SUNY Potsdam		Mid East Public			Carnegie Class		NSSE 2012		
	Mean <sup>a</sup>	Mean <sup>a</sup>	Sig <sup>b</sup>	Effect Size <sup>c</sup>	Mean <sup>a</sup>	Sig <sup>b</sup>	Effect Size <sup>c</sup>	Mean <sup>a</sup>	Sig <sup>b</sup>	Effect Size <sup>c</sup>
First-Year	36.3	34.2		.11	36.1		.01	35.9		.02
Senior	50.9	42.3	***	.39	43.7	***	.33	42.9	***	.37

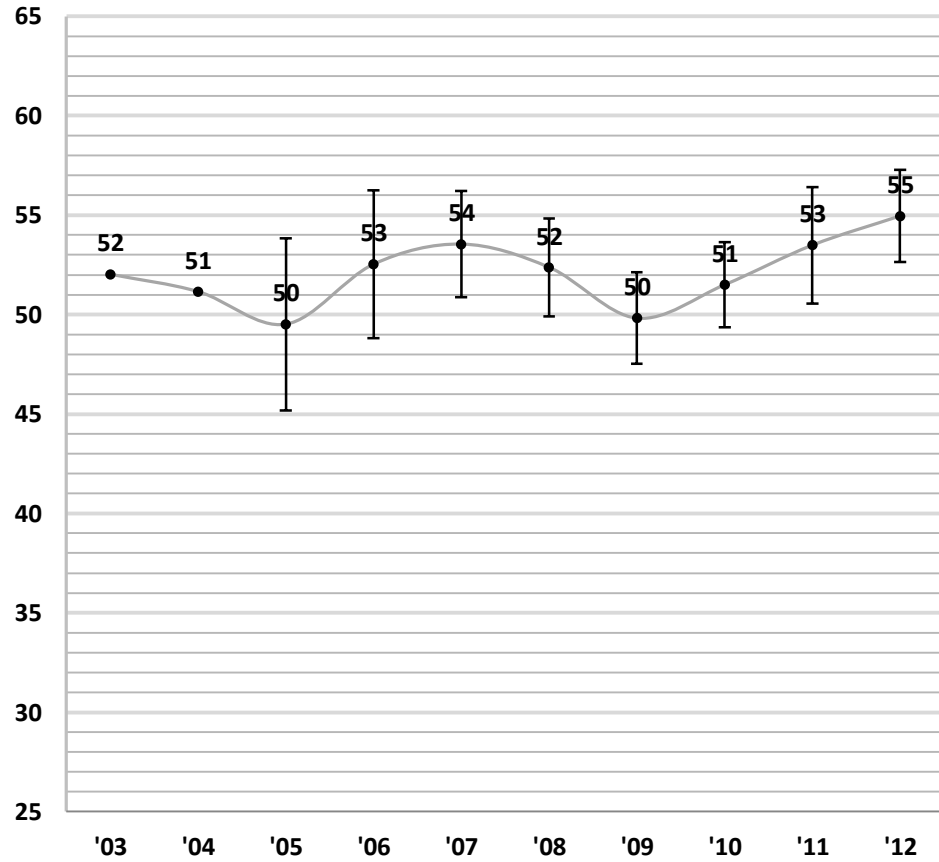
## Distributions of Student Benchmark Scores



**FY Student-Faculty Interaction (SFC)b Trends 2003-2012**



**SR Student-Faculty Interaction (SFC)b Trends 2003-2012**



# Enriching Educational Experiences (EEE)

- Hours spent participating in co-curricular activities
- Practicum, internship, field experience, co-op experience, or clinical assignment
- Community service or volunteer work
- Foreign language coursework and study abroad
- Independent study or self-designed major
- Culminating senior experience
- Serious conversations with students of a different race or ethnicity than your own, or of different religious beliefs, political opinions, or personal values.
- Using electronic medium to discuss or complete an assignment
- Campus environment encouraging contact among students from different economic, social, and racial or ethnic backgrounds
- Participate in a learning community...

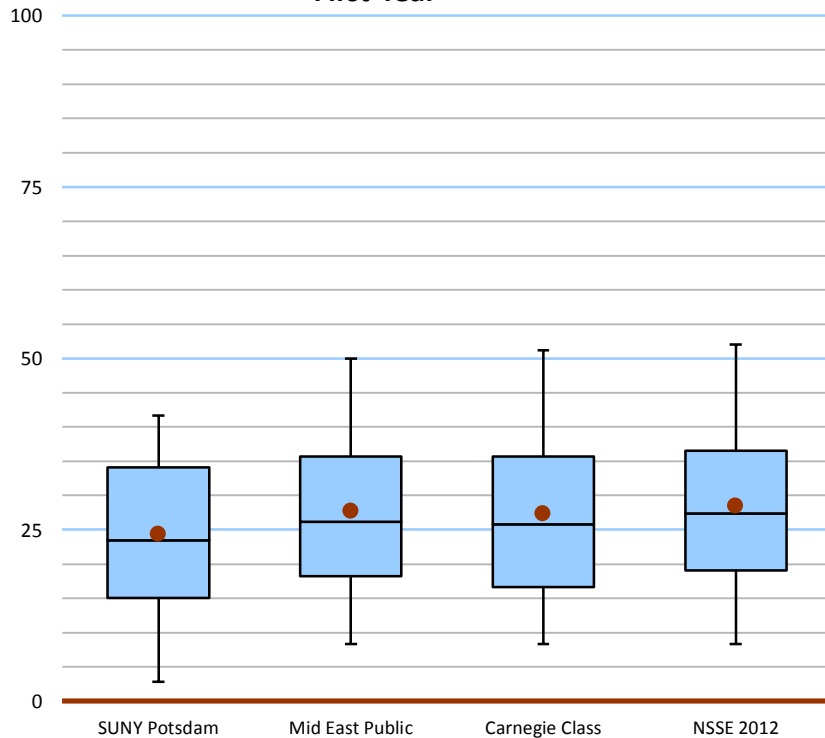
# Enriching Educational Experiences (EEE) – SUNY Potsdam NSSE 2012

## Mean Comparisons

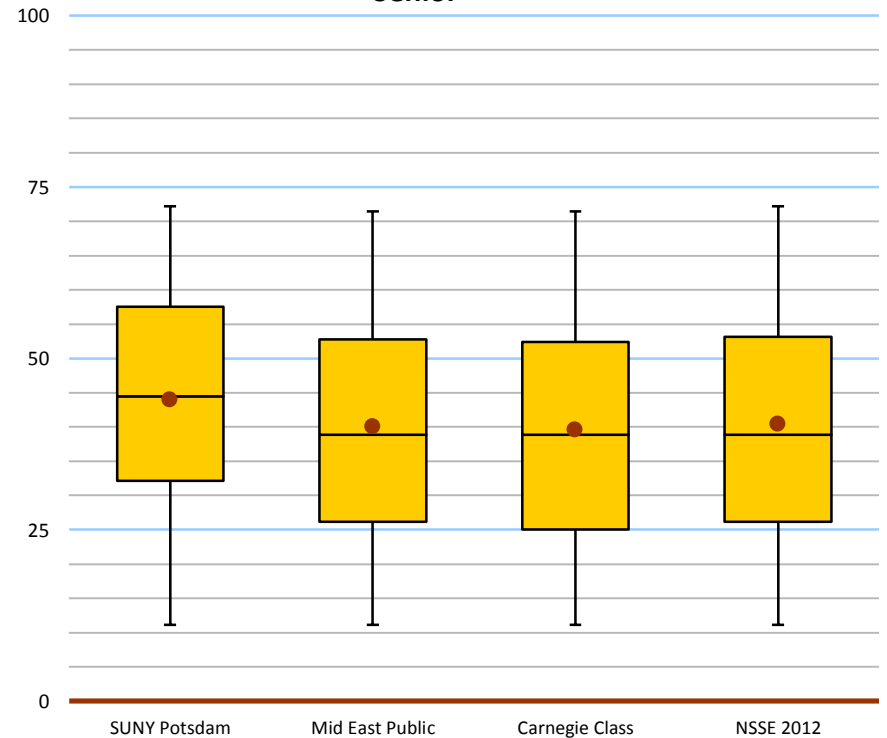
SUNY Potsdam compared with:

Class	SUNY Potsdam		Mid East Public			Carnegie Class		NSSE 2012		
	Mean <sup>a</sup>	Mean <sup>a</sup>	Sig <sup>b</sup>	Effect Size <sup>c</sup>	Mean <sup>a</sup>	Sig <sup>b</sup>	Effect Size <sup>c</sup>	Mean <sup>a</sup>	Sig <sup>b</sup>	Effect Size <sup>c</sup>
First-Year	24.3	27.7	*	-.26	27.3		-.22	28.4	**	-.30
Senior	44.0	40.0	*	.22	39.6	**	.24	40.4	*	.19

First-Year

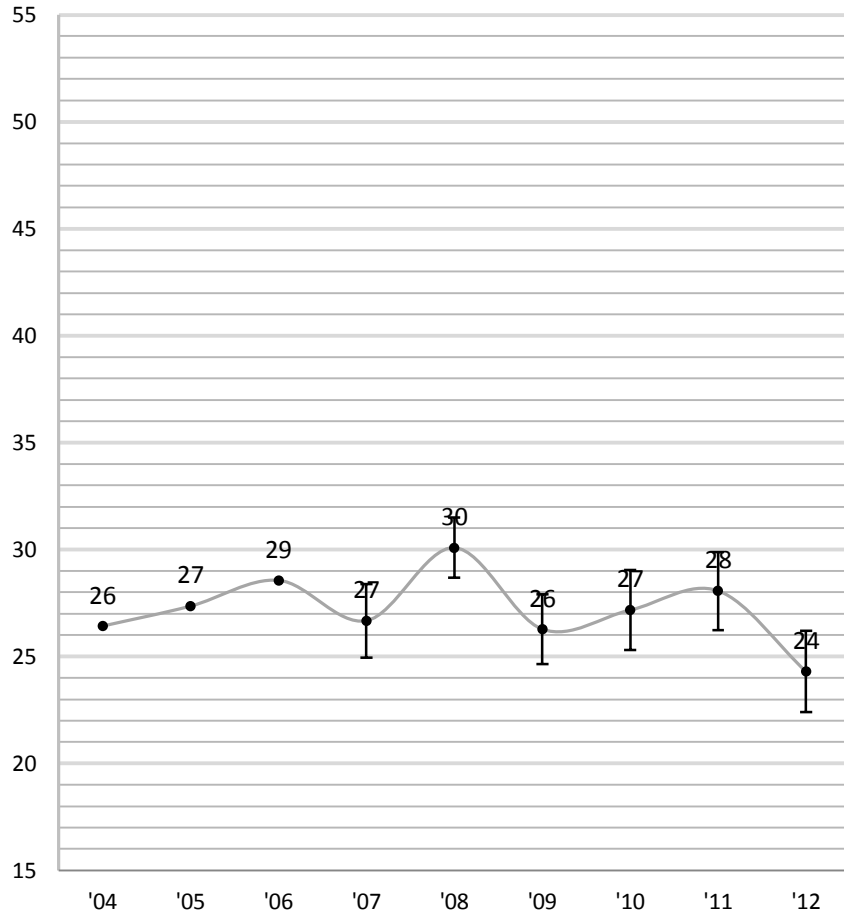


Senior

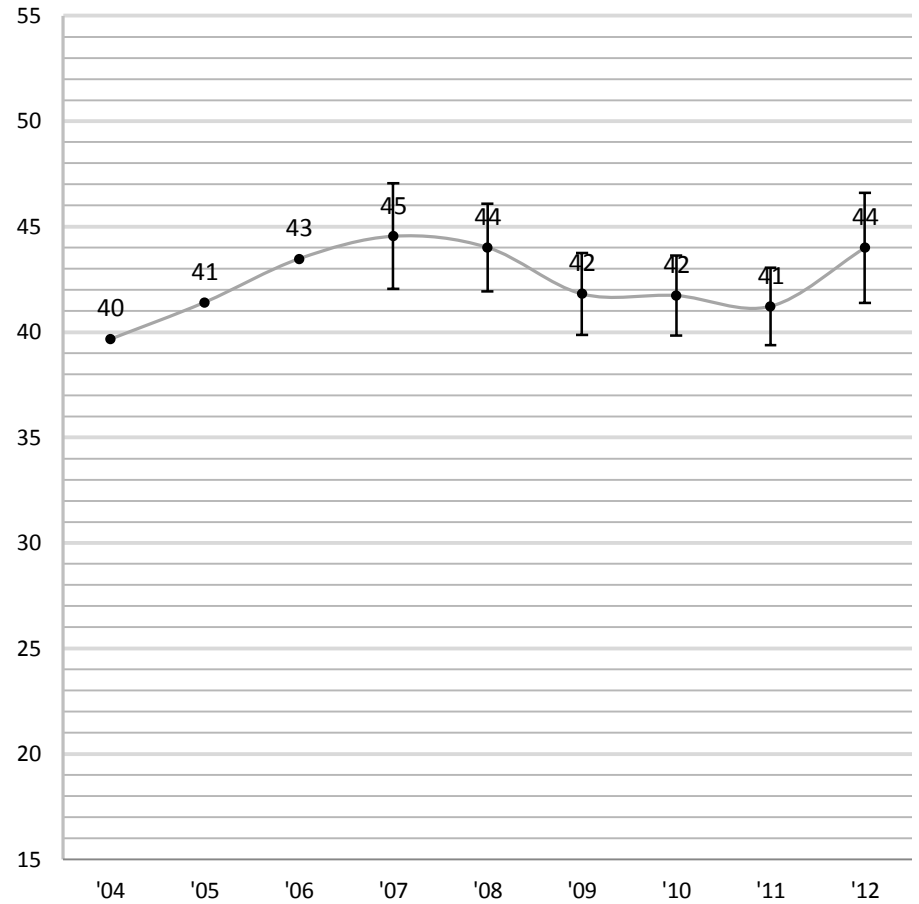




**FY Enriching Educational Experiences (EEE)<sup>c</sup>  
Trends 2004-2012**



**SR Enriching Educational Experiences (EEE)<sup>c</sup>  
Trends 2004-2012**



# Supportive Campus Environment (SCE)

- Provides support you need to succeed academically.
- Helps you cope with non-academic responsibilities.
- Provides support to thrive socially.
- Quality of relationships with other students; faculty members; administrative personnel and offices.

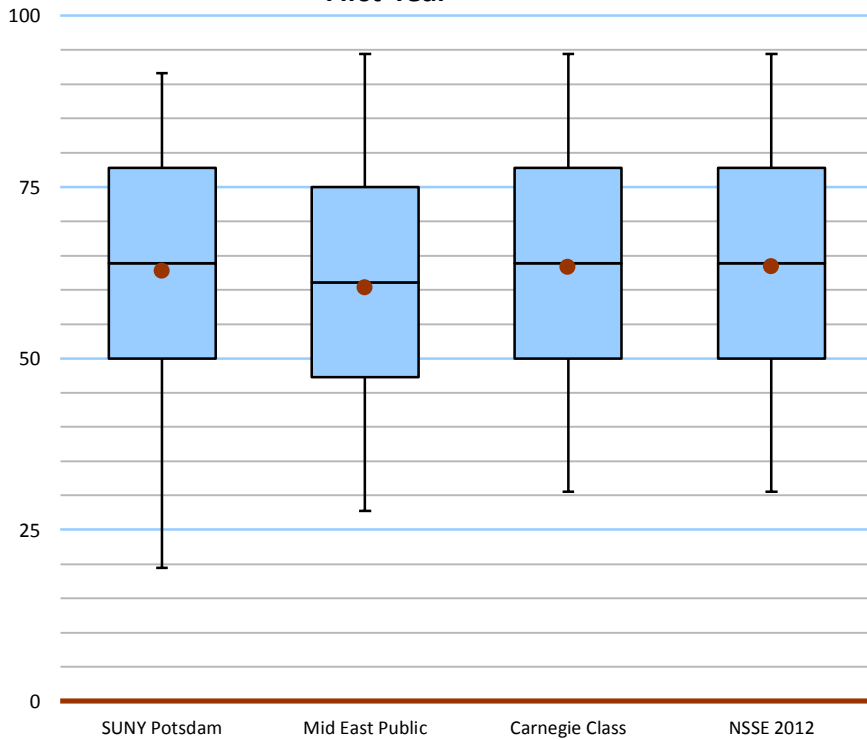
# Supportive Campus Environment (SCE) – SUNY Potsdam NSSE 2012

## Mean Comparisons

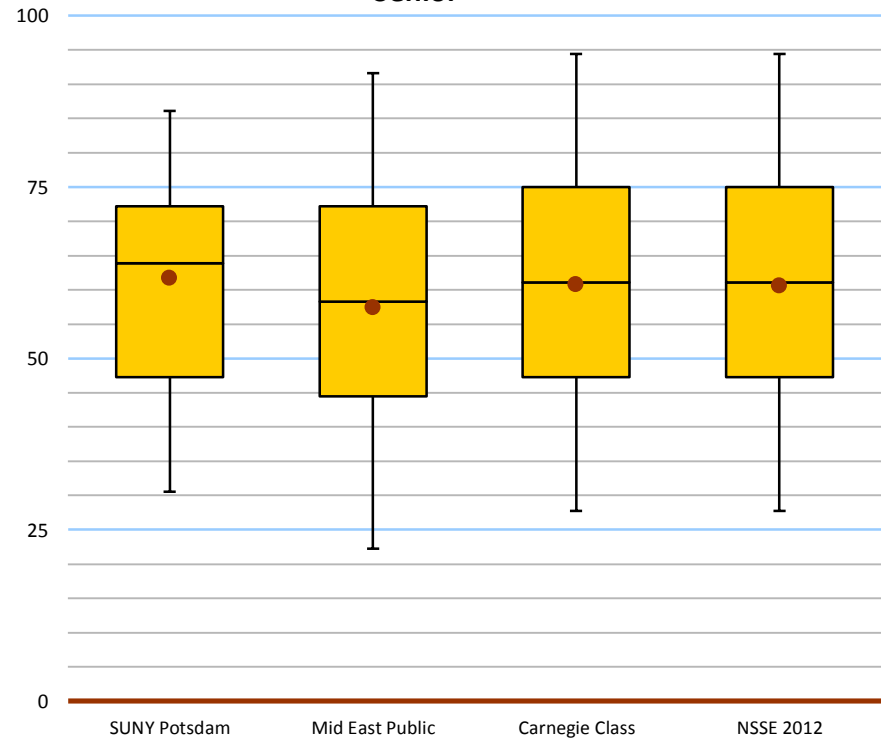
SUNY Potsdam compared with:

Class	SUNY Potsdam		Mid East Public		Effect Size <sup>c</sup>	Carnegie Class		NSSE 2012		Effect Size <sup>c</sup>
	Mean <sup>a</sup>		Mean <sup>a</sup>	Sig <sup>b</sup>		Mean <sup>a</sup>	Sig <sup>b</sup>	Mean <sup>a</sup>	Sig <sup>b</sup>	
First-Year	62.7		60.3		.12	63.3		63.4		-.03
Senior	61.7		57.4	**	.21	60.8		60.5		.06

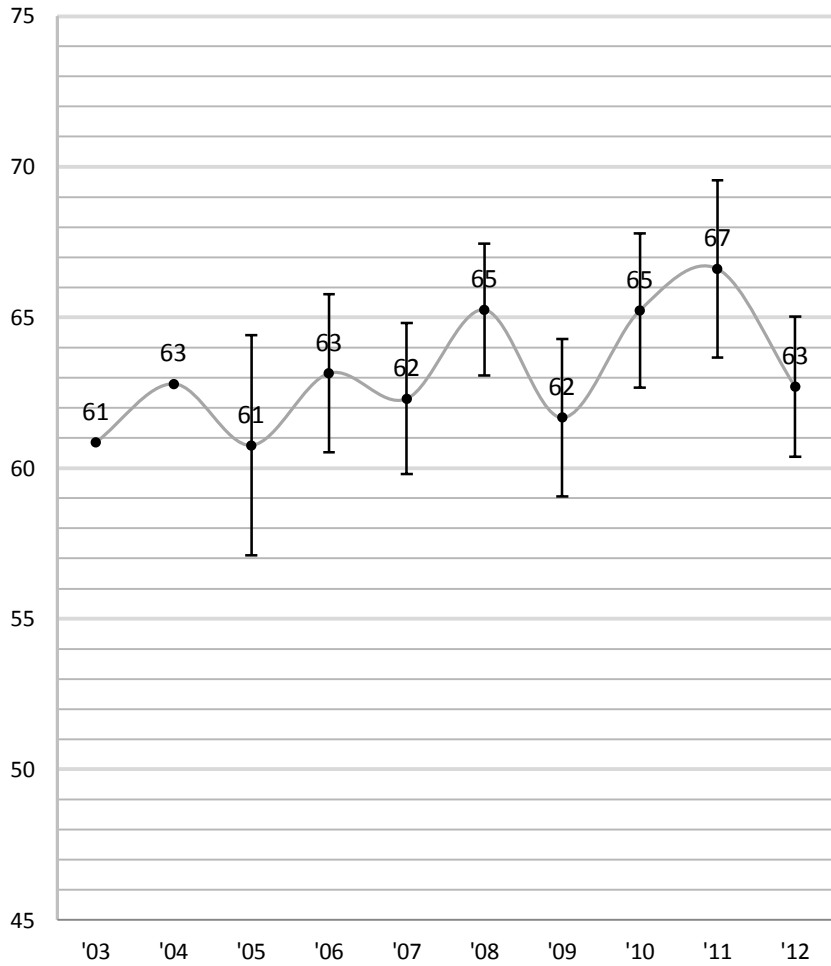
First-Year



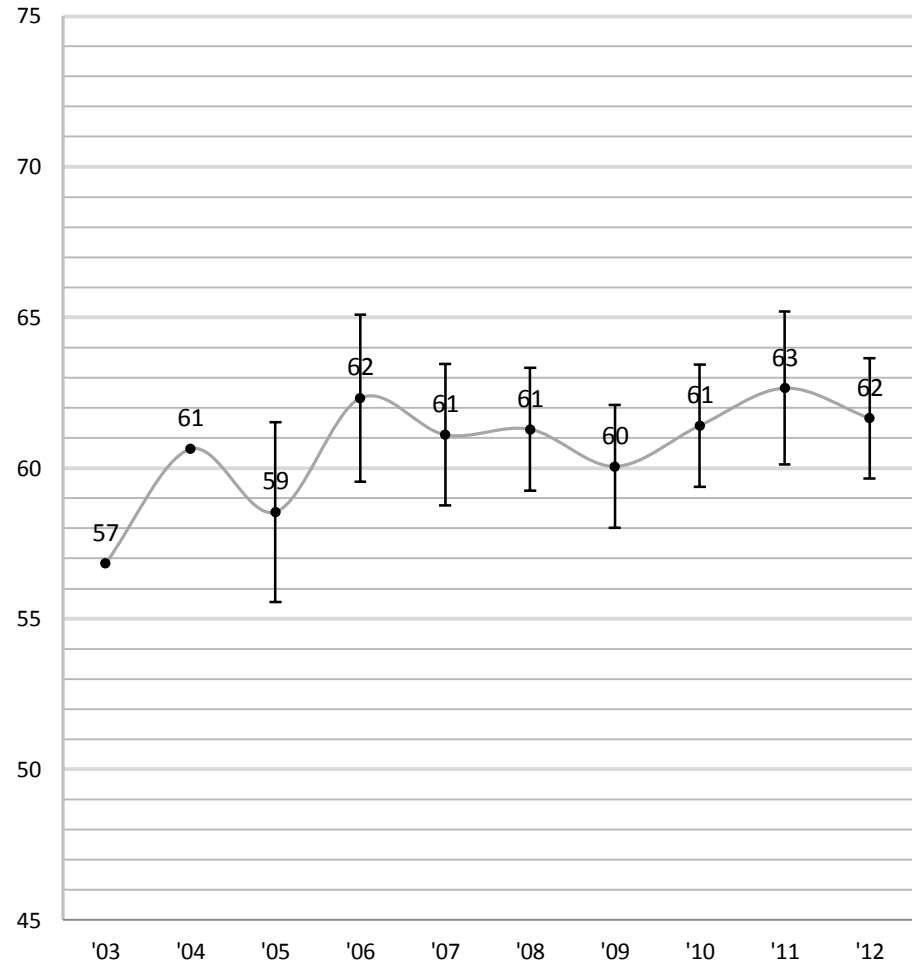
Senior



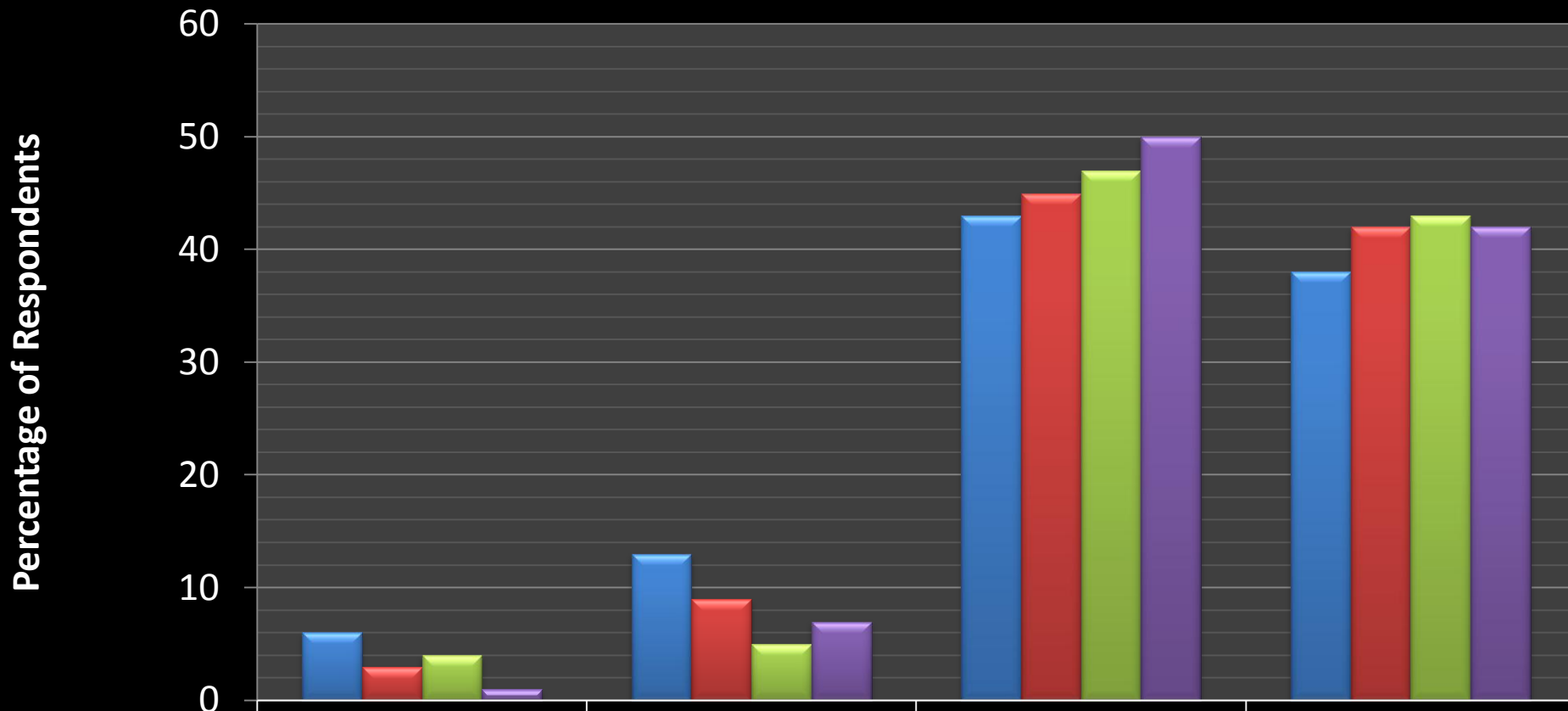
**FY Supportive Campus Environment (SCE)  
Trends 2003-2012**



**SR Supportive Campus Environment (SCE)  
Trends 2003-2012**

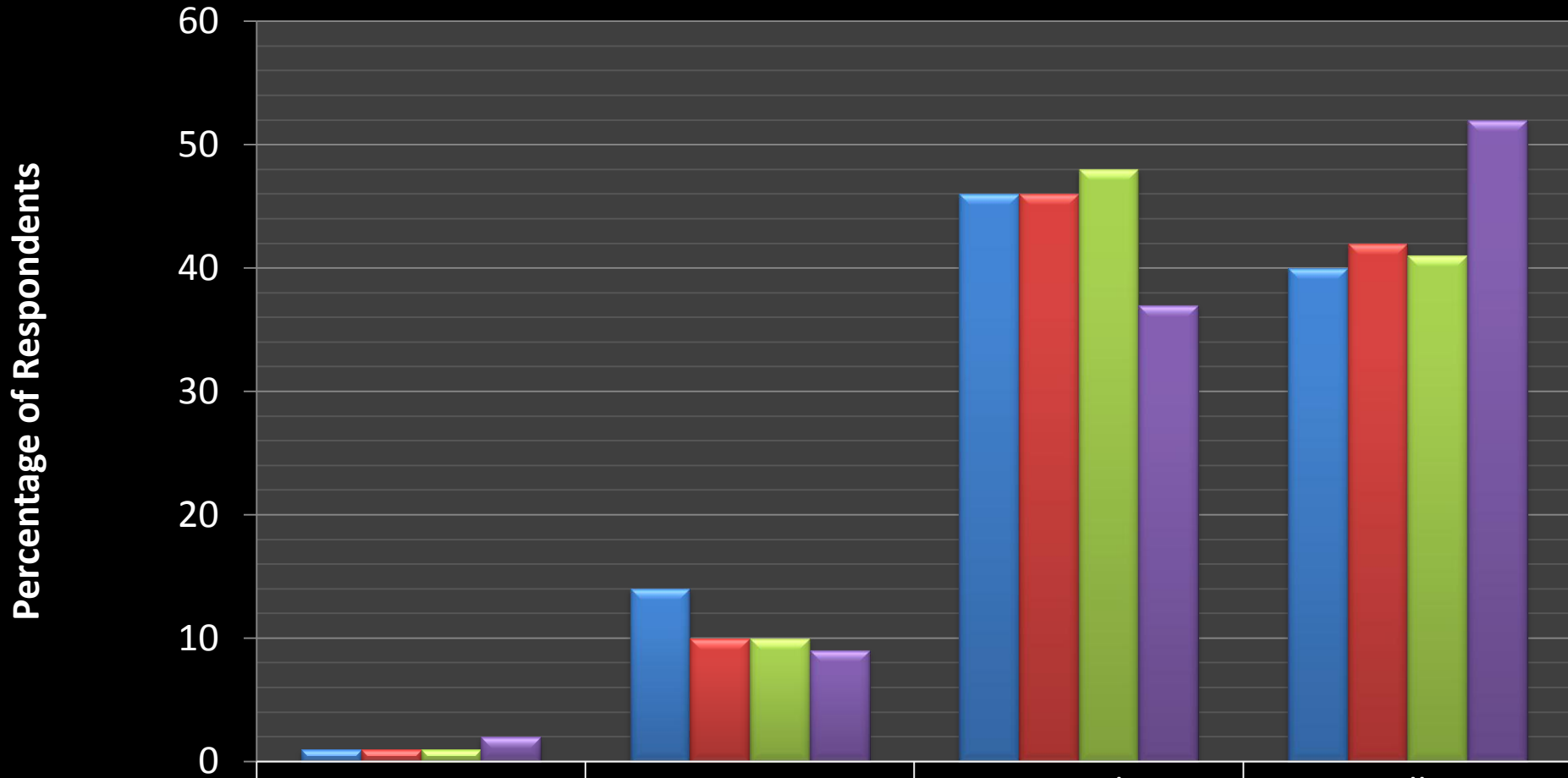


# NSSE Trends 2009-2012: First Year Students - "How would you evaluate your entire educational experience at SUNY Potsdam?"



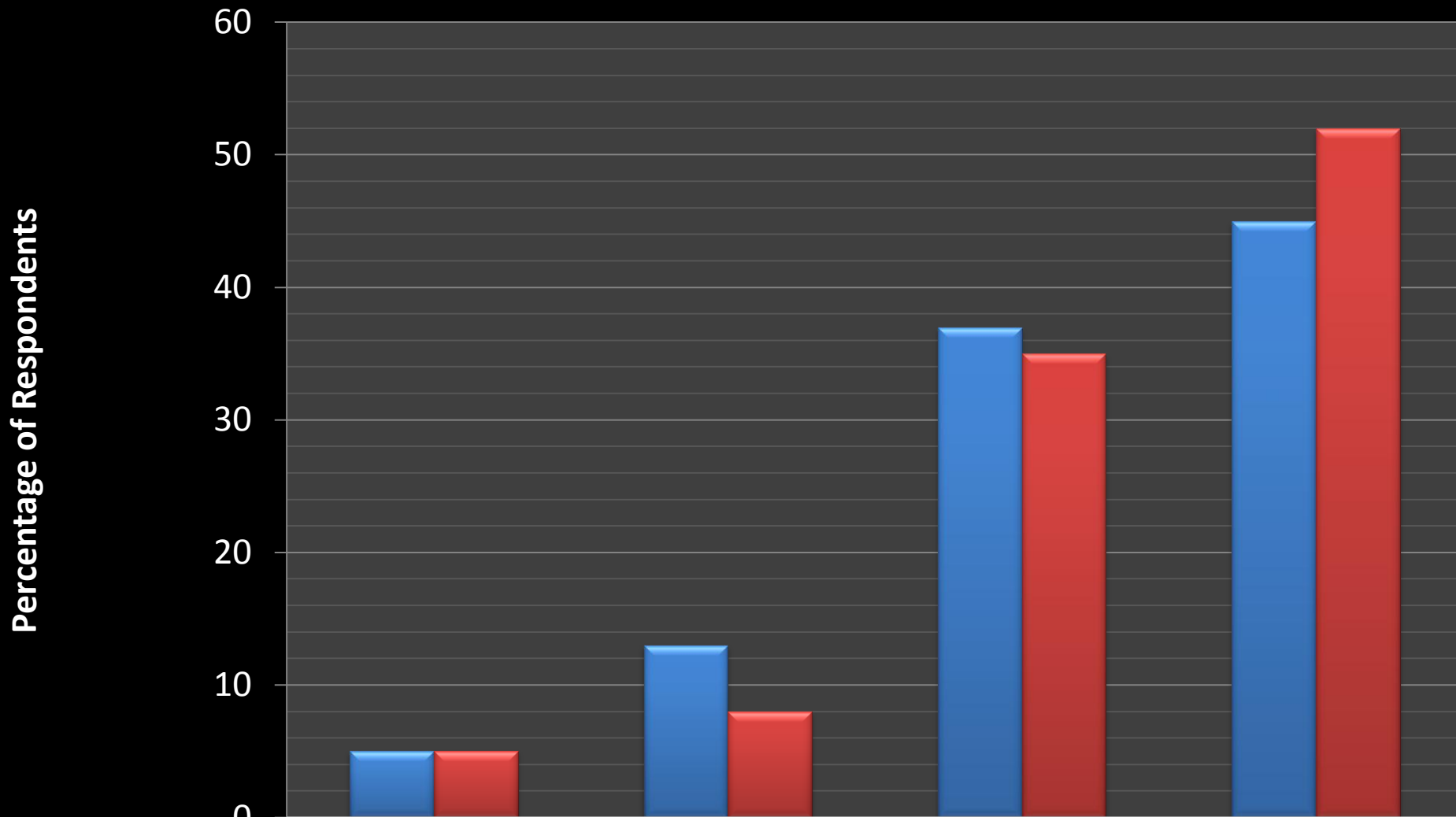
	Poor	Fair	Good	Excellent
2009 n=140	6	13	43	38
2010 n=224	3	9	45	42
2011 n=137	4	5	47	43
2012 n=70	1	7	50	42

# NSSE Trends 2009-2012: Senior Year - "How would you evaluate your entire educational experience at SUNY Potsdam?"



	Poor	Fair	Good	Excellent
2009 n=203	1	14	46	40
2010 n=316	1	10	46	42
2011 n=272	1	10	48	41
2012 n=128	2	9	37	52

# NSSE 2012 - "If you could start over again, would you attend SUNY Potsdam?"



	Definitely No	Probably No	Probably Yes	Definitely Yes
■ First Year n=70	5	13	37	45
■ Seniors n=130	5	8	35	52

# ***7. Student Opinion Survey***

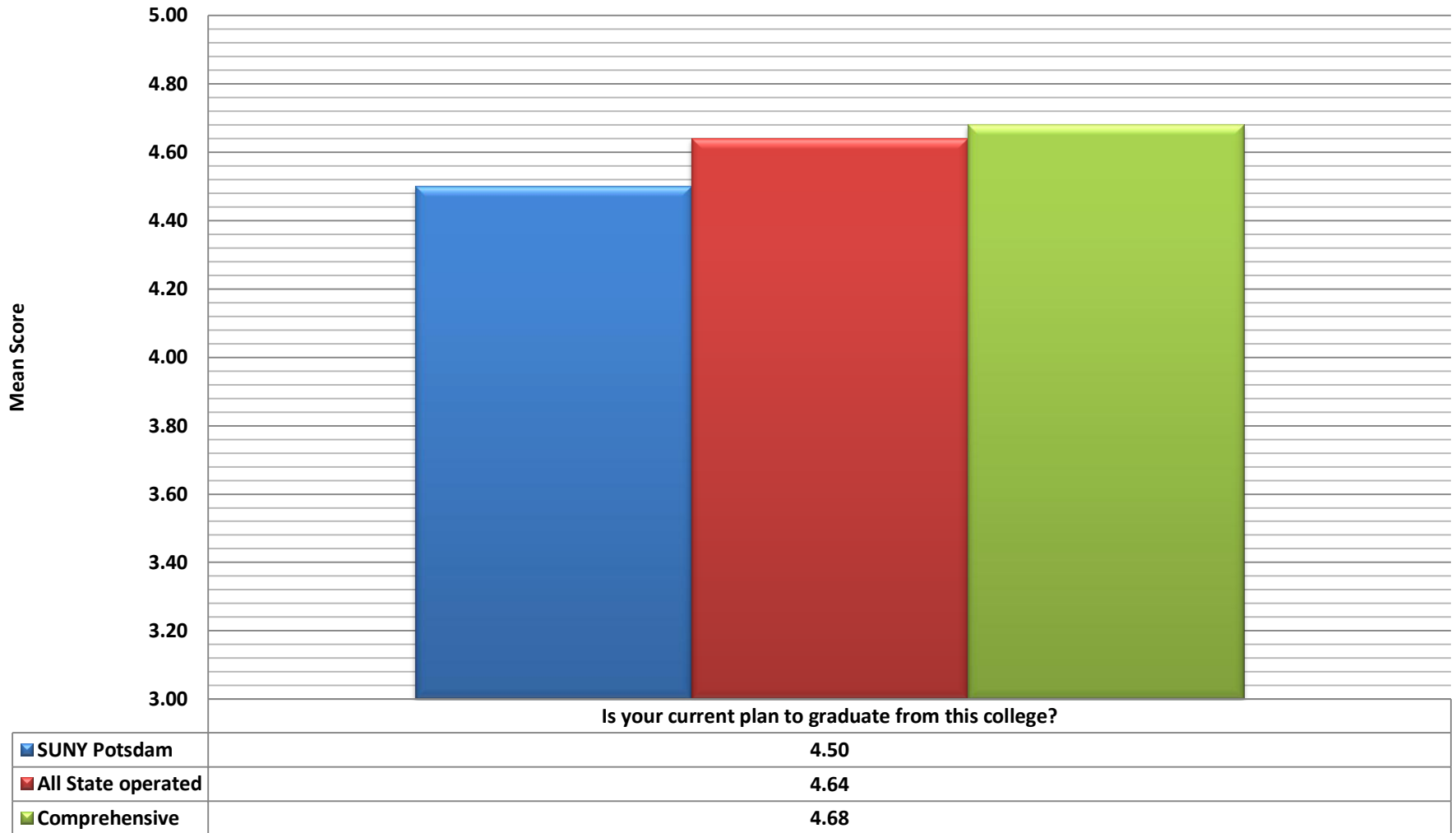
***(SOS – Spring 2012 –***

**Highlights!**



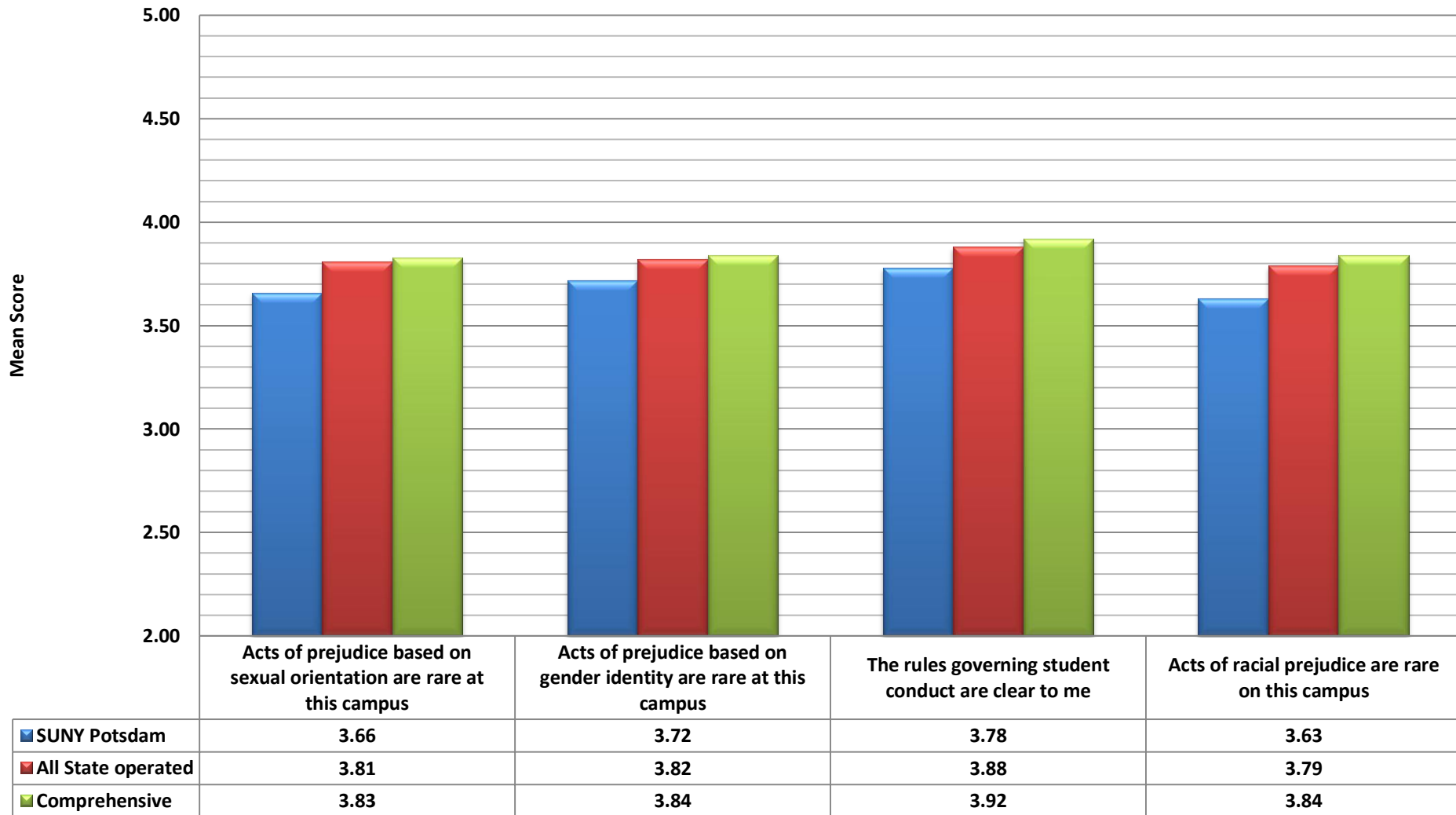
- The SUNY Student Opinion Survey (SOS) project collects background, attitude, and opinion information from SUNY undergraduate students.
- The project began in 1985 and occurs every 3 years. SUNY Potsdam has participated in each administration.
- Results show comparisons between SUNY Potsdam and the Comprehensive Colleges (n=12) and SUNY Potsdam and all State-operated Colleges (n=27).
- The comparisons include a rank order and statistical significance for each question.
- The following charts show mean responses to questions where Potsdam's rank was in the top 3/top 10 or bottom 3/bottom 10 compared to the Comprehensive Colleges and State Operated Colleges respectively.
- **All results in these charts are statistically significant.**

**Is your current plan to graduate from this college?  
Potsdam ranks 11th compared to Comprehensive Colleges (N=12) and  
21st compared to all State-Operated Campuses (N=27)**



Item average calculated using the following scale: Definitely yes=5, Probably yes=4, Uncertain=3, Probably no=2, Definitely no=1

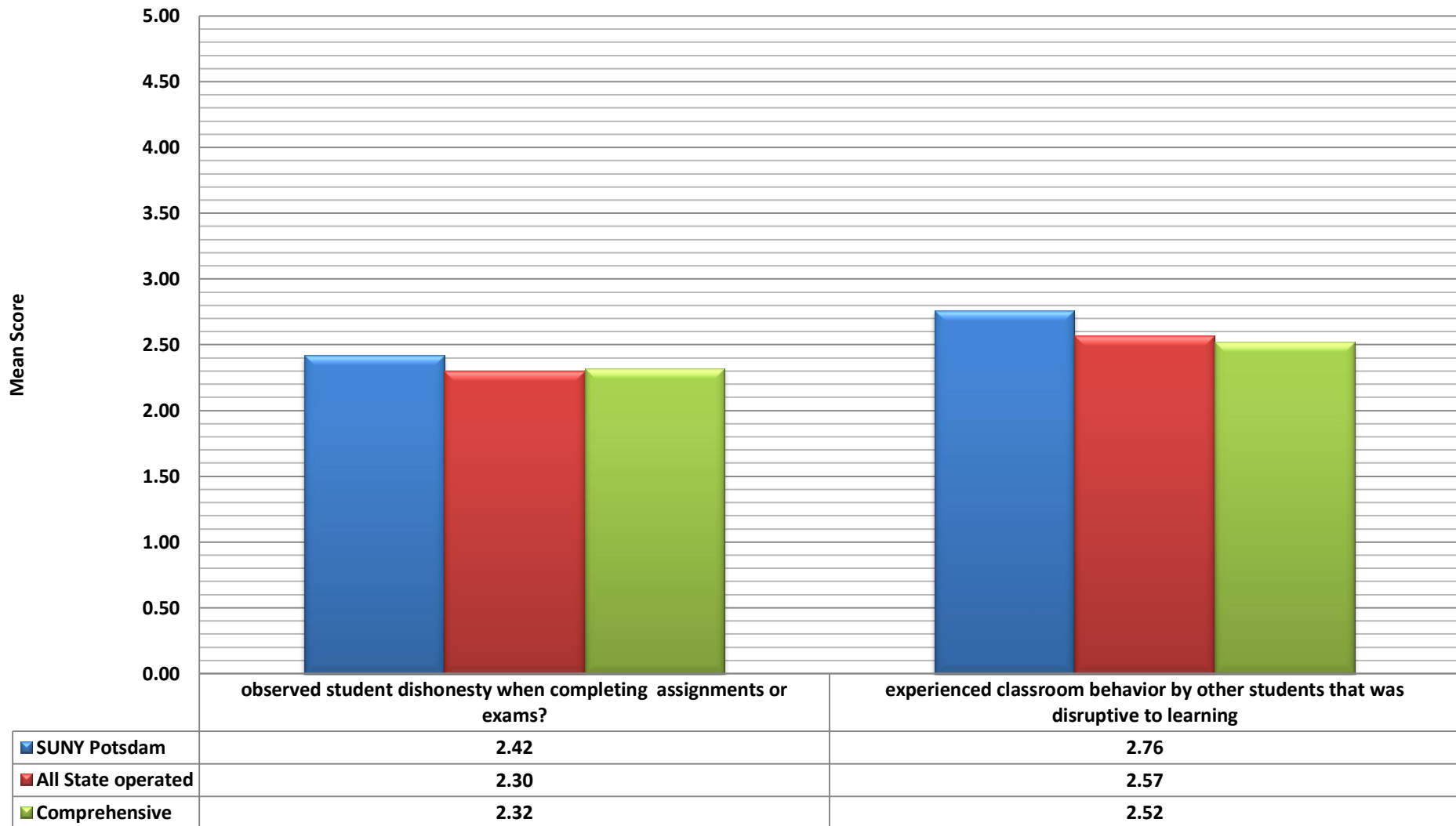
## Potsdam Ranks in the Bottom 3 compared to Comprehensive Colleges (N=12) and Bottom 10 compared to all State-Operated Campuses (N=27) Level of agreement with...



▶ Item average calculated using the following scale: Strongly Agree=5, Agree=4, neither Agree Nor Disagree=3, Disagree=2, Strongly Disagree=1

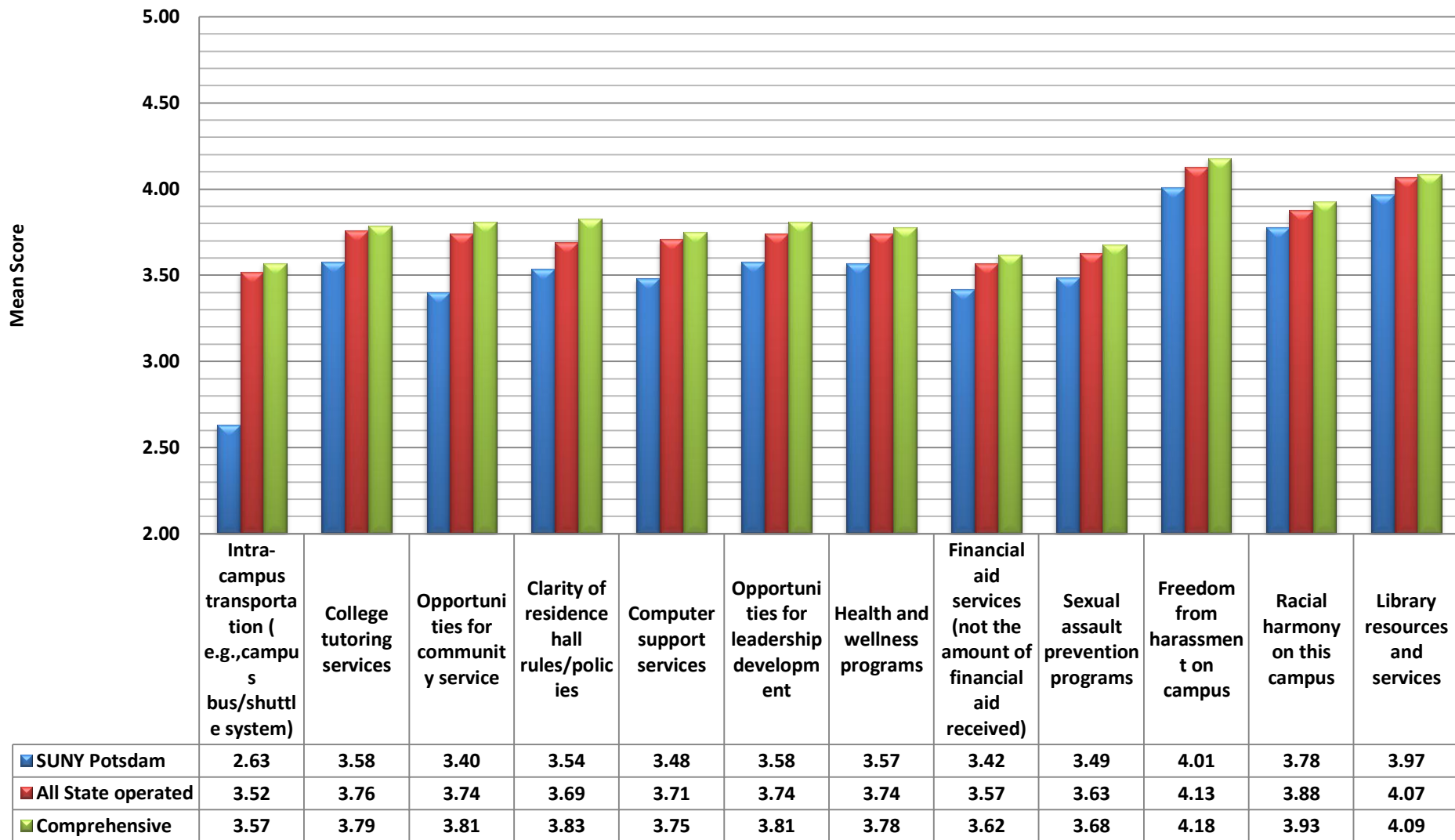
# Potsdam Ranks in the Top 3 compared to Comprehensive Colleges (N=12) and Top 10 compared to all State-Operated Campuses (N=27)

## How frequently have you...



▶ Item average calculated using the following scale: Very frequently=5, Frequently=4, Occasionally=3, Rarely=2, Never=1

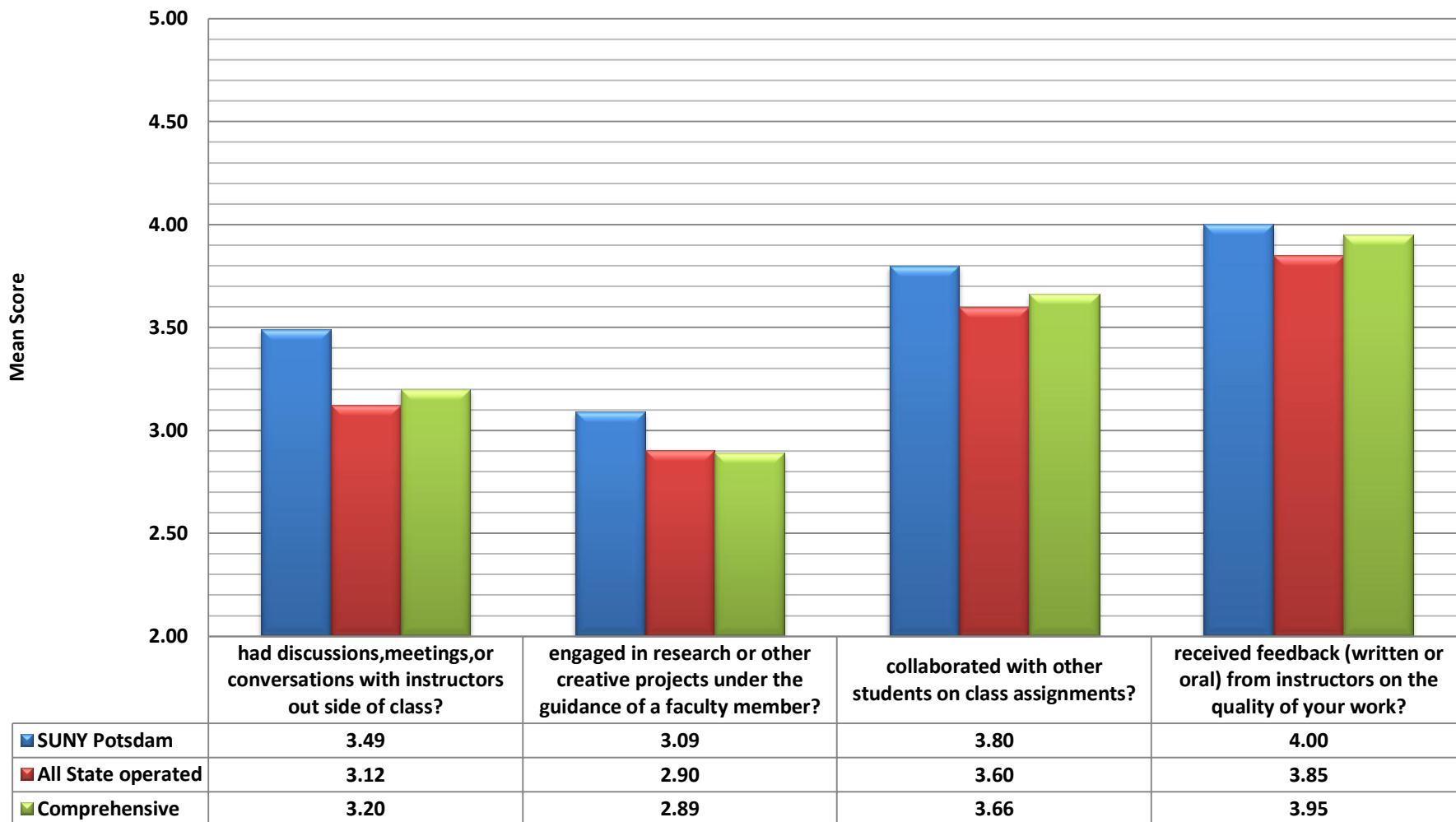
# Potsdam Ranks in the Bottom 3 compared to Comprehensive Colleges (N=12) and Bottom 10 compared to all State-Operated Campuses (N=27) Level of satisfaction with...



▶ Item average calculated using the following scale: Very Satisfied=5, Satisfied=4, Neither Satisfied Nor Dissatisfied=3, Dissatisfied=2, Strongly Dissatisfied=1

## Potsdam Ranks in the Top 3 compared to Comprehensive Colleges (N=12) and Top 10 compared to all State-Operated Campuses (N=27)

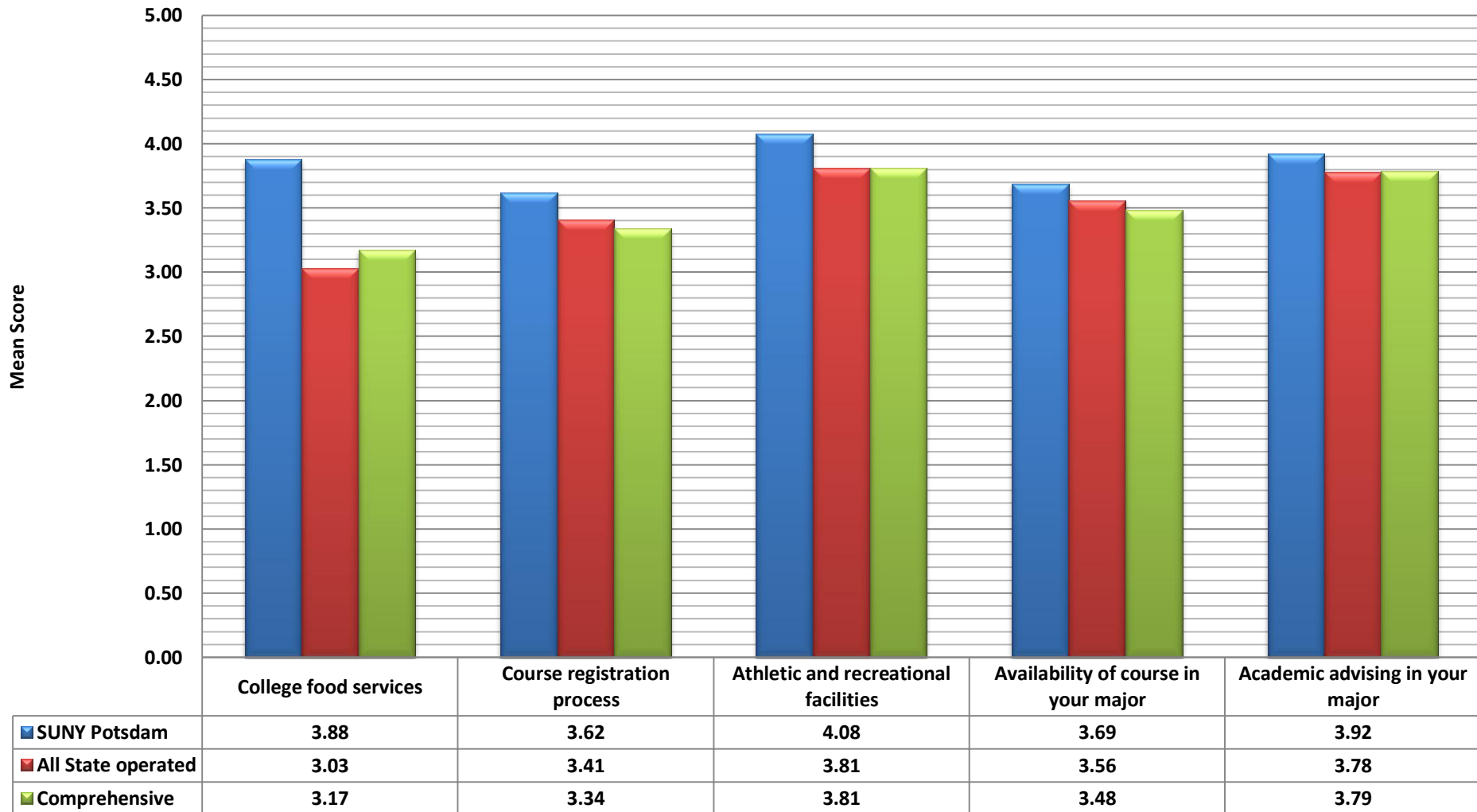
### How frequently have you...



Item average calculated using the following scale: Very frequently=5, Frequently=4, Occasionally=3, Rarely=2, Never=1

# Potsdam Ranks in the Top 3 compared to Comprehensive Colleges (N=12) and Top 10 compared to all State-Operated Campuses (N=27)

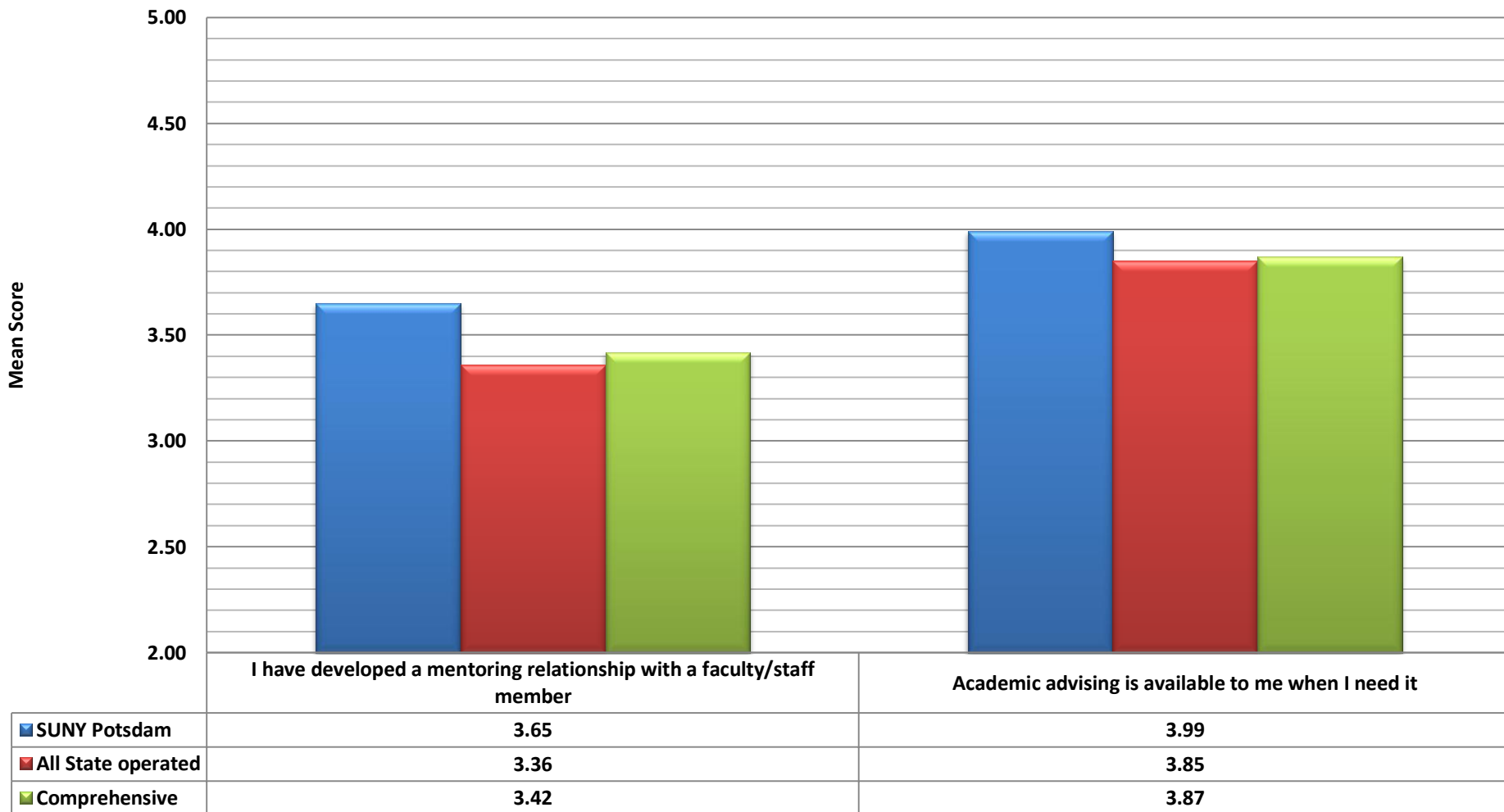
## Level of satisfaction with...



▶ Item average calculated using the following scale: Strongly Agree=5, Agree=4, neither Agree Nor Disagree=3, Disagree=2, Strongly Disagree=1

# Potsdam Ranks in the Top 3 compared to Comprehensive Colleges (N=12) and Top 10 compared to all State-Operated Campuses (N=27)

## Level of agreement with..



▶ Item average calculated using the following scale: Strongly Agree=5, Agree=4, neither Agree Nor Disagree=3, Disagree=2, Strongly Disagree=1



*Have a great semester!*

***NEXT MEETING***

December 12, 2012 at 3 p.m.

Location: TBA

