

# TEACHER EDUCATION ADVISORY COUNCIL

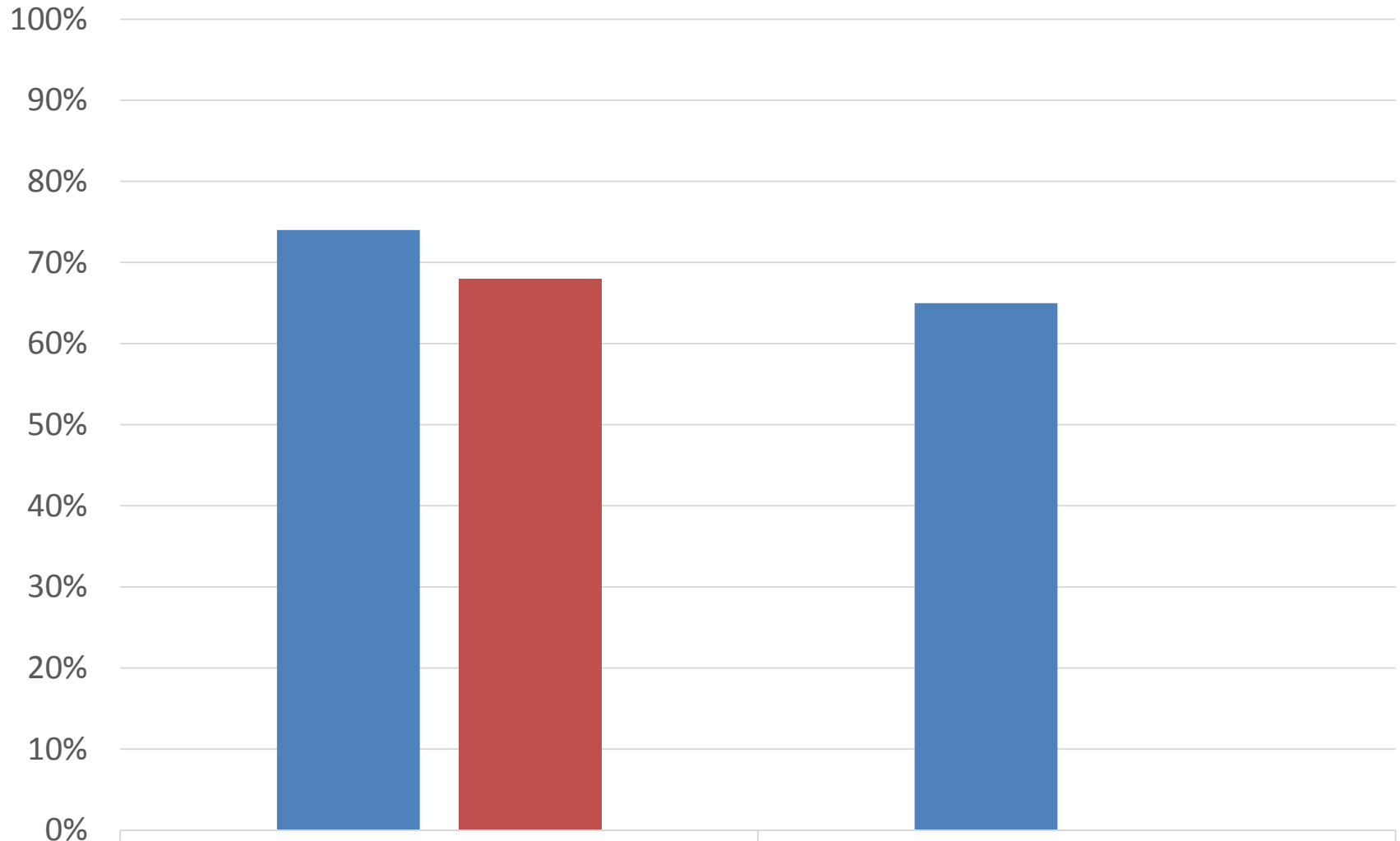
Compiled by Office of Institutional  
Effectiveness

October 28<sup>th</sup>, 2015

# Data Sources

- The following data is performance of “Completers by Program Year.” (Exception: EAS and ALST pass rates are by test year.)
- Data retrieved from Title II reports
- EAS and ALST data retrieved from State Ed site
- The Potsdam data for program years with low “n”s were retrieved from Banner.
- 2014-15 Program Completers’ data retrieved from BearPaws report/Banner.

# Academic Literacy Skills Test (ALST) Pass Rates

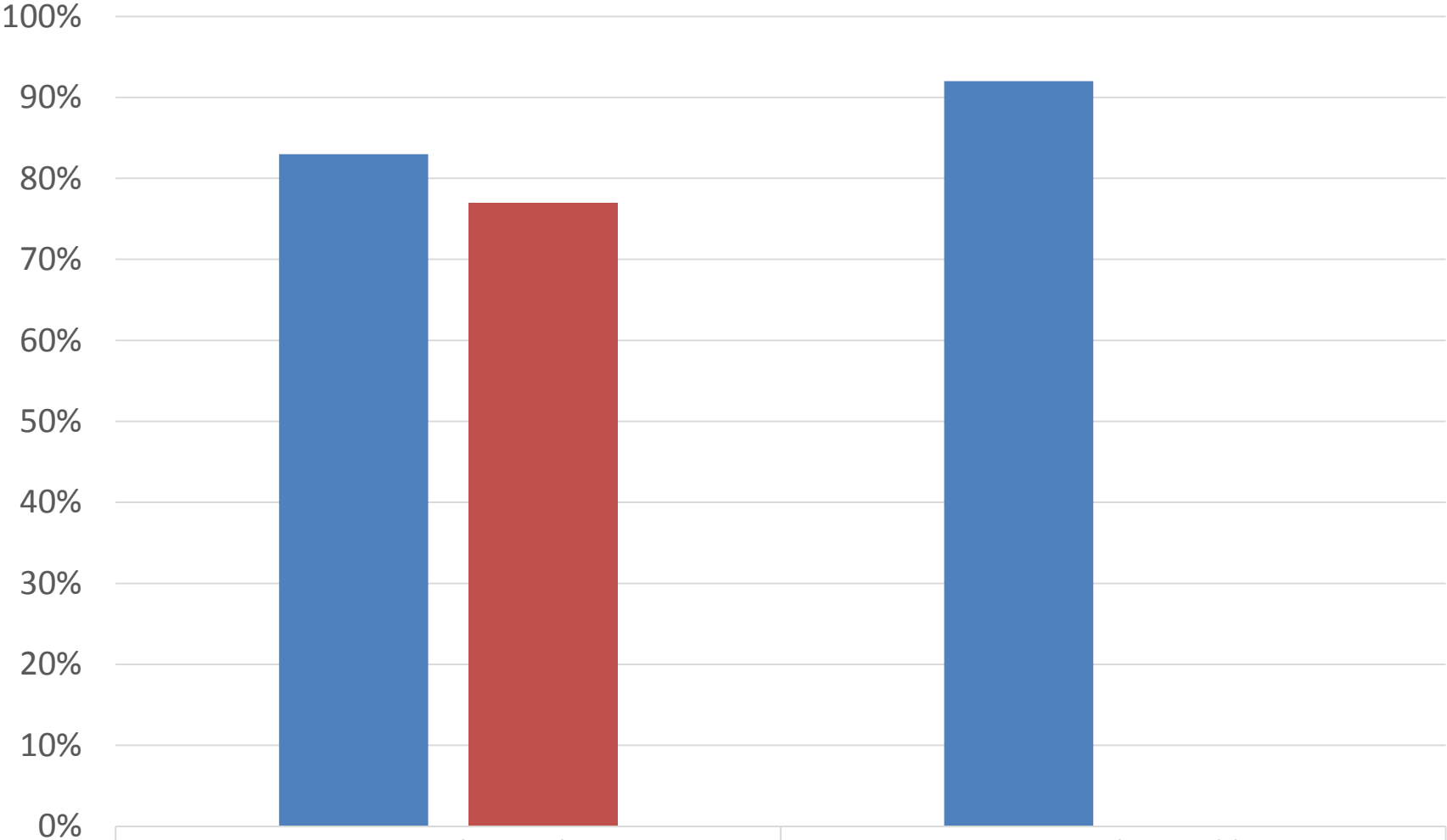


■ Potsdam

■ State Overall

\*Data retrieved from Banner

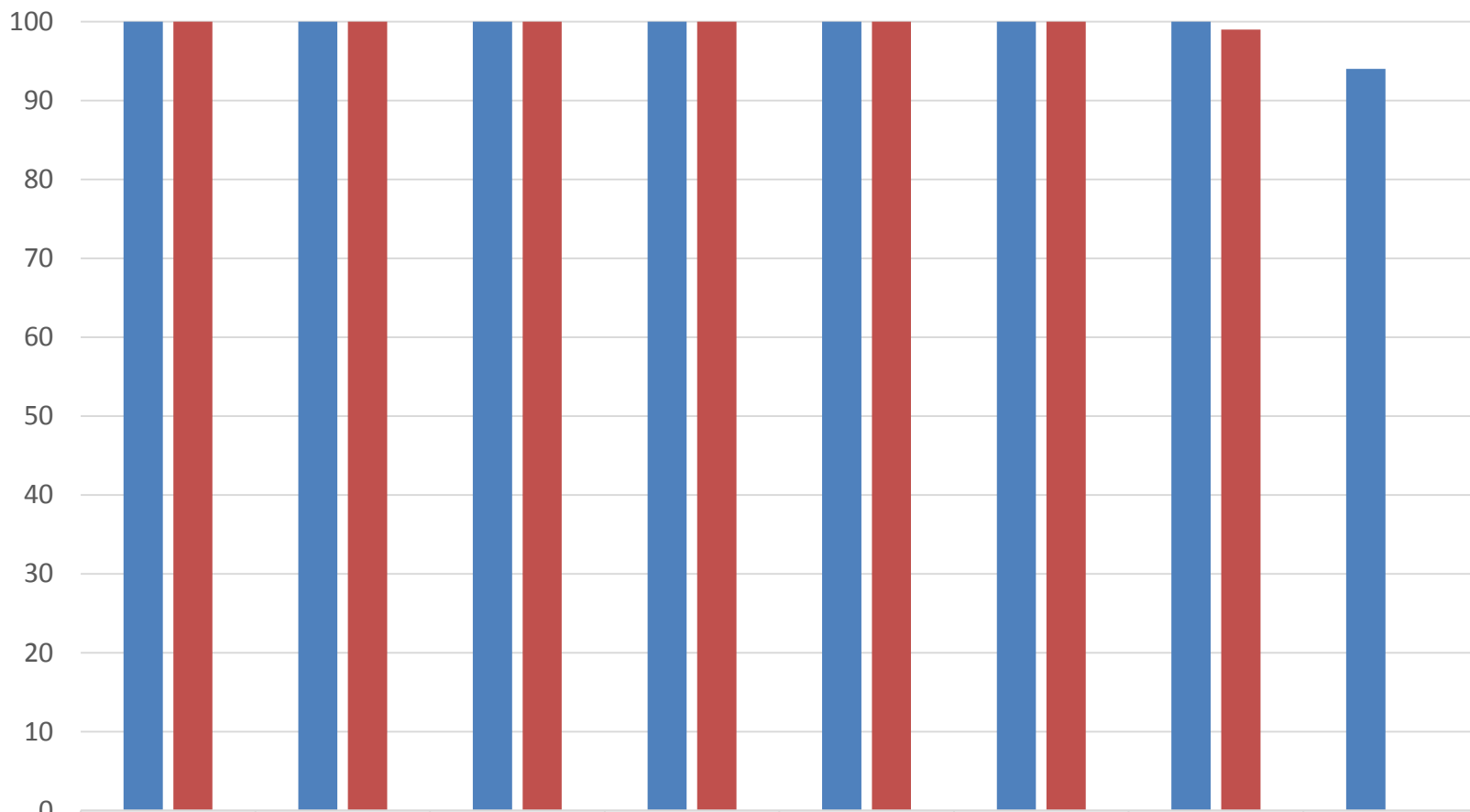
# Education All Students Pass Rates



	2013-14 (n=168)	2014-15 (n=195)*
■ Potsdam	83%	92%
■ State Overall	77%	

\*Data retrieved from Banner; Rate using Safety Net Score

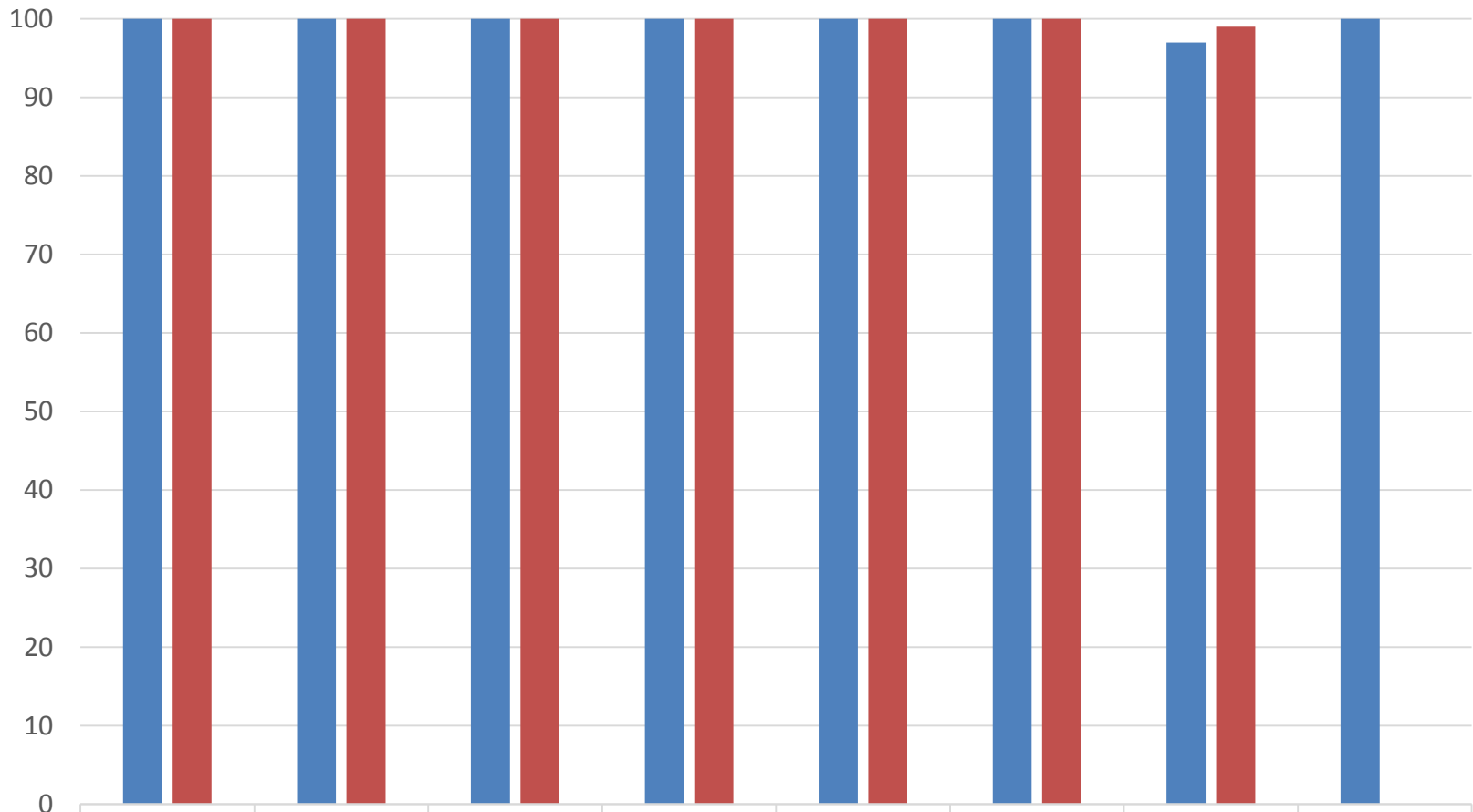
# Elementary ATS-W SUNY Potsdam vs New York State Pass Rate



	All program completers, 2007-08 (n=373)	All program completers, 2008-09 (n=354)	All program completers, 2009-10 (n=324)	All program completers, 2010-11 (n=282)	All program completers, 2011-12 (n=248)	All program completers, 2012-13 (n=200)	All program completers, 2013-14 (n=89)	All program completers, 2014-15* (n=16)
■ Potsdam PASS RATE	100	100	100	100	100	100	100	94
■ State AVG PASS RATE	100	100	100	100	100	100	99	

■ Potsdam PASS RATE    ■ State AVG PASS RATE

# Secondary ATS-W SUNY Potsdam vs. New York State Pass Rate



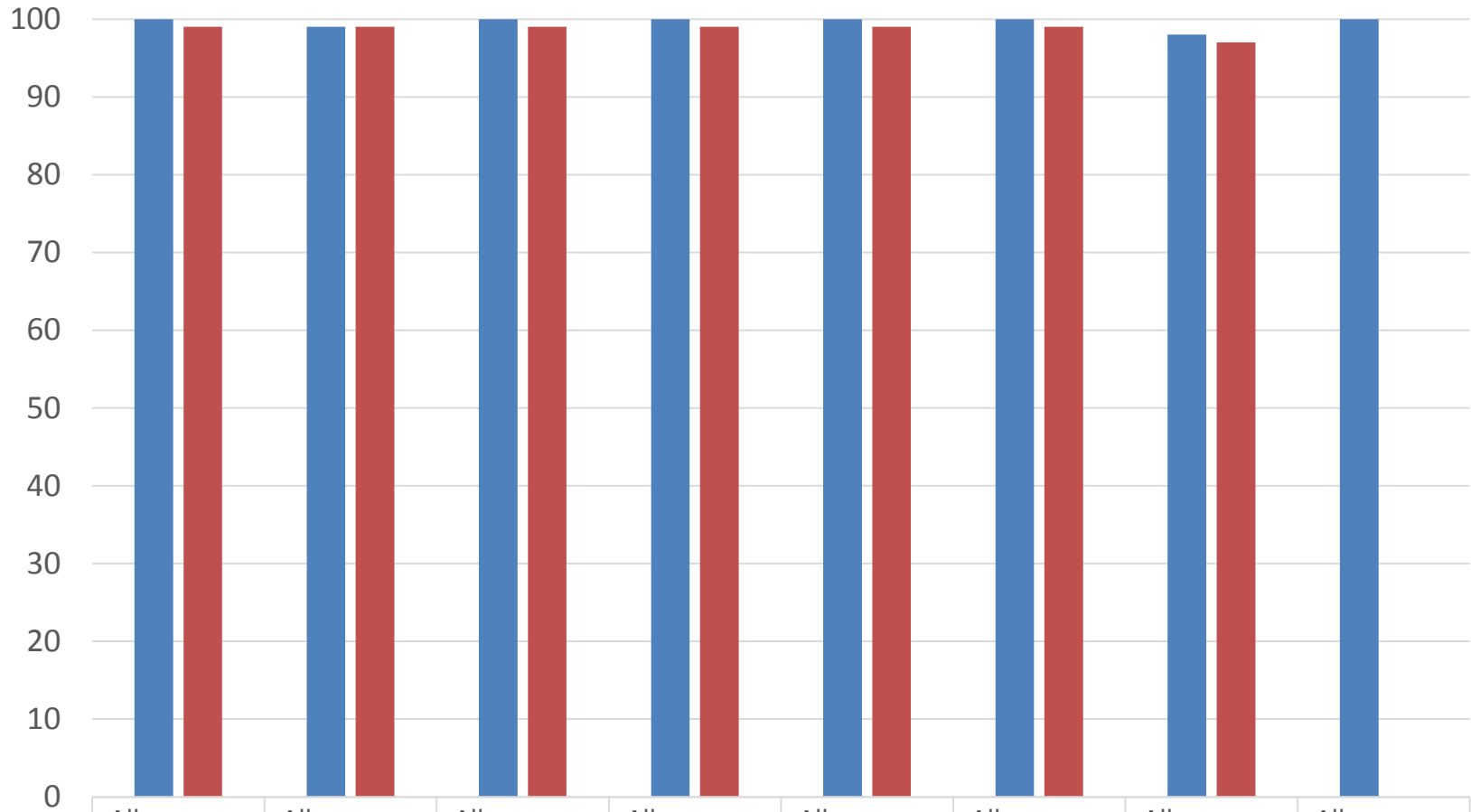
	All program completers, 2007-08 (n=114)	All program completers, 2008-09 (n=116)	All program completers, 2009-10 (n=128)	All program completers, 2010-11 (n=120)	All program completers, 2011-12 (n=88)	All program completers, 2012-13 (n=76)	All program completers, 2013-14 (n=29)	All program completers, 2014-15* (n=2)
■ Potsdam PASS RATE	100	100	100	100	100	100	97	100
■ State AVG PASS RATE	100	100	100	100	100	100	99	

■ Potsdam PASS RATE    ■ State AVG PASS RATE

# LAST

## SUNY Potsdam vs. New York State

### Pass Rates



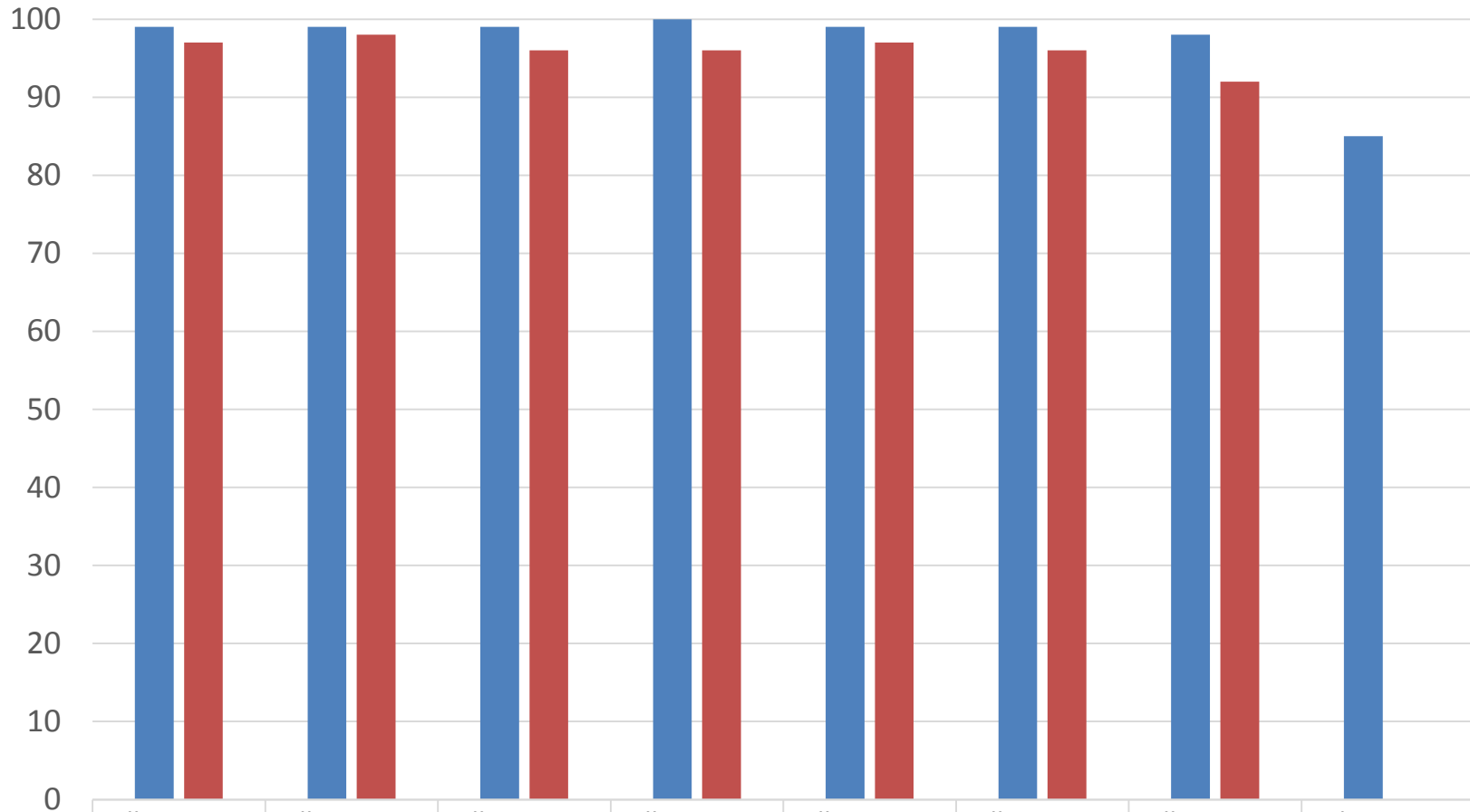
	All program completers, 2007-08 (n=485)	All program completers, 2008-09 (n=474)	All program completers, 2009-10 (n=450)	All program completers, 2010-11 (n=406)	All program completers, 2011-12 (n=339)	All program completers, 2012-13 (n=281)	All program completers, 2013-14 (n=99)	All program completers, 2014-15* (n=4)
■ Potsdam PASS RATE	100	99	100	100	100	100	98	100
■ State AVG PASS RATE	99	99	99	99	99	99	97	

■ Potsdam PASS RATE     
 ■ State AVG PASS RATE

# Multi-Subject CST

## SUNY Potsdam vs. New York State

### Pass Rate



	All program completers, 2007-08 (n=289)	All program completers, 2008-09 (n=258)	All program completers, 2009-10 (n=220)	All program completers, 2010-11 (n=175)	All program completers, 2011-12 (n=149)	All program completers, 2012-13 (n=143)	All program completers, 2013-14 (n=120)	All program completers, 2014-15* (n=40)
■ Potsdam PASS RATE	99	99	99	100	99	99	98	85
■ State AVG PASS RATE	97	98	96	96	97	96	92	

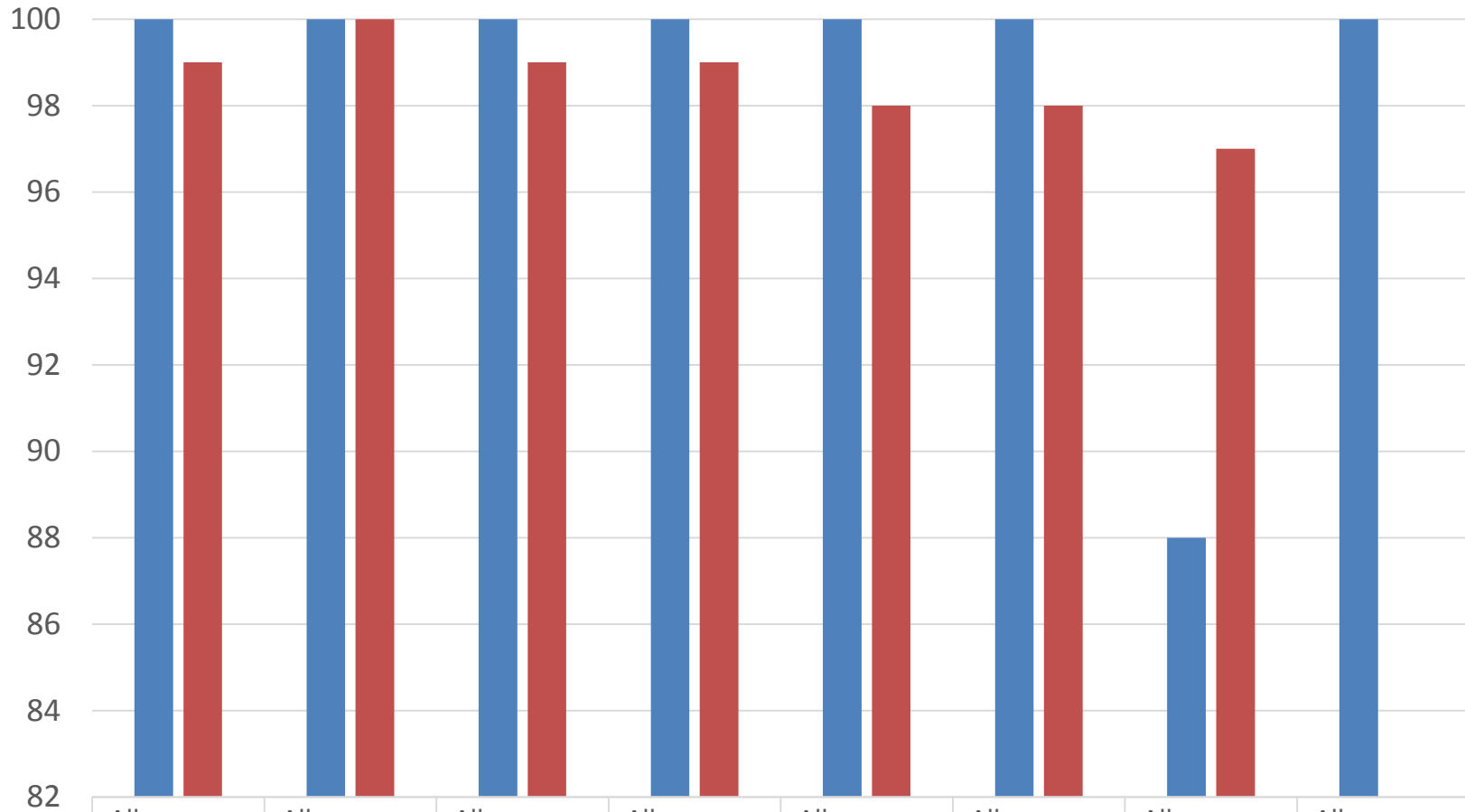
■ Potsdam PASS RATE     
 ■ State AVG PASS RATE



# Mathematics CST

## SUNY Potsdam vs. New York State

### Pass Rate



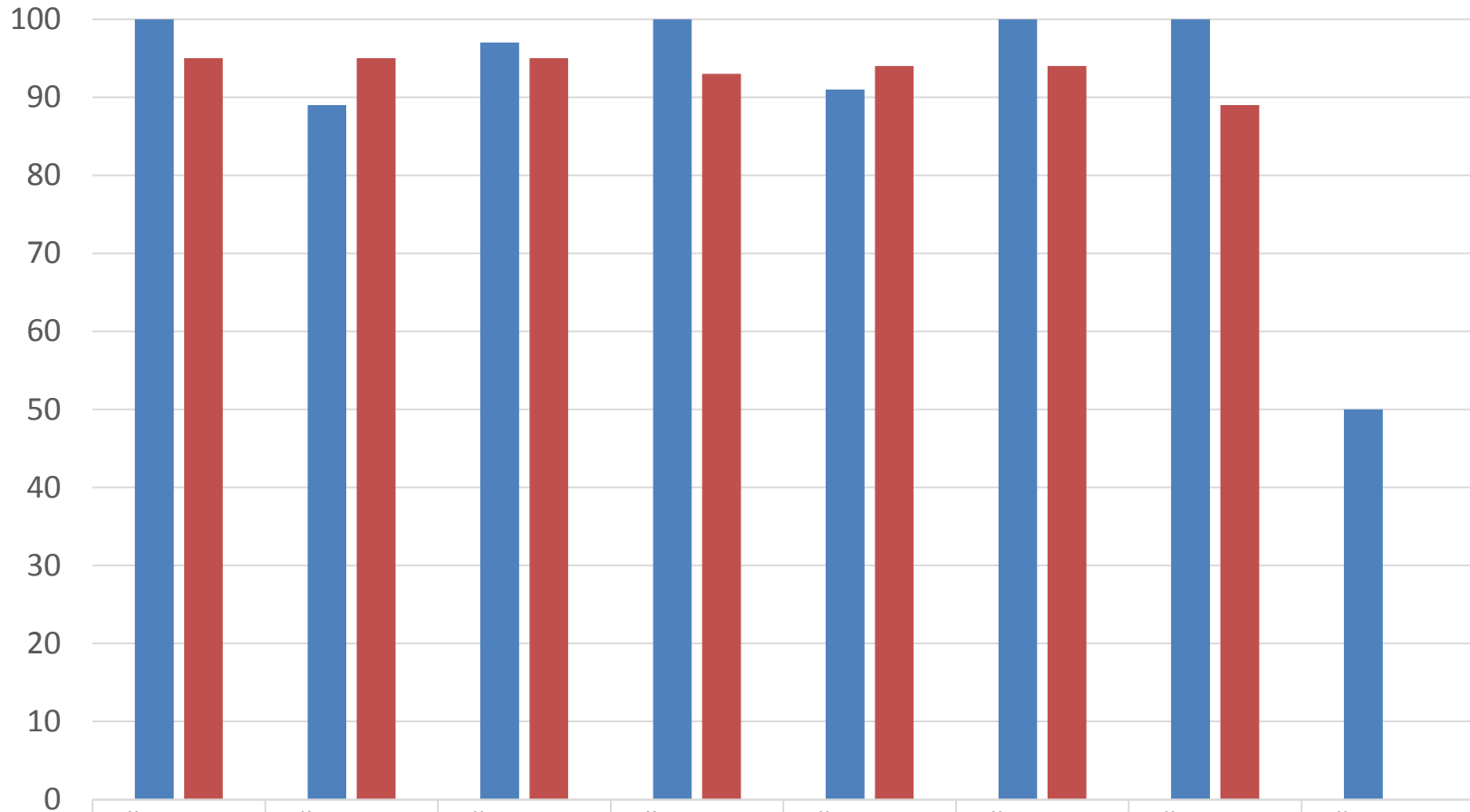
	All program completers, 2007-08 (n=15)	All program completers, 2008-09 (n=12)	All program completers, 2009-10 (n=17)	All program completers, 2010-11 (n=10)	All program completers, 2011-12 (n=10)	All program completers, 2012-13* (n=11)	All program completers, 2013-14* (n=8)	All program completers, 2014-15* (n=4)
■ Potsdam PASS RATE	100	100	100	100	100	100	88	100
■ State AVG PASS RATE	99	100	99	99	98	98	97	

■ Potsdam PASS RATE     
 ■ State AVG PASS RATE

# Social Studies CST

## SUNY Potsdam vs. New York State

### Pass Rate



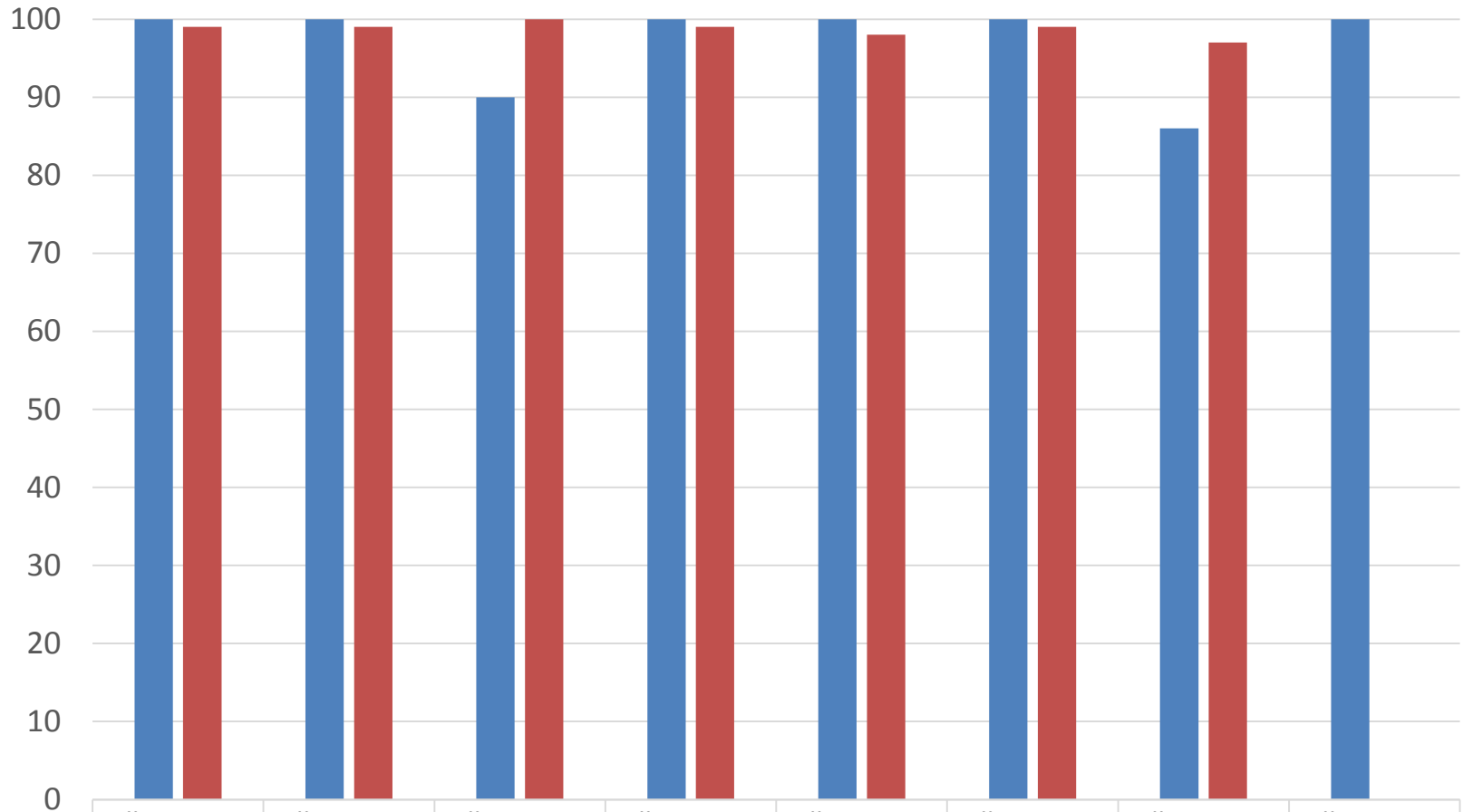
	All program completers, 2007-08 (n=15)	All program completers, 2008-09 (n=18)	All program completers, 2009-10 (n=35)	All program completers, 2010-11 (n=16)	All program completers, 2011-12 (n=11)	All program completers, 2012-13 (n=14)	All program completers, 2013-14 (n=10)	All program completers, 2014-15* (n=2)
■ Potsdam PASS RATE	100	89	97	100	91	100	100	50
■ State AVG PASS RATE	95	95	95	93	94	94	89	

■ Potsdam PASS RATE    ■ State AVG PASS RATE

# Biology CST

## SUNY Potsdam vs. New York State

### Pass Rate



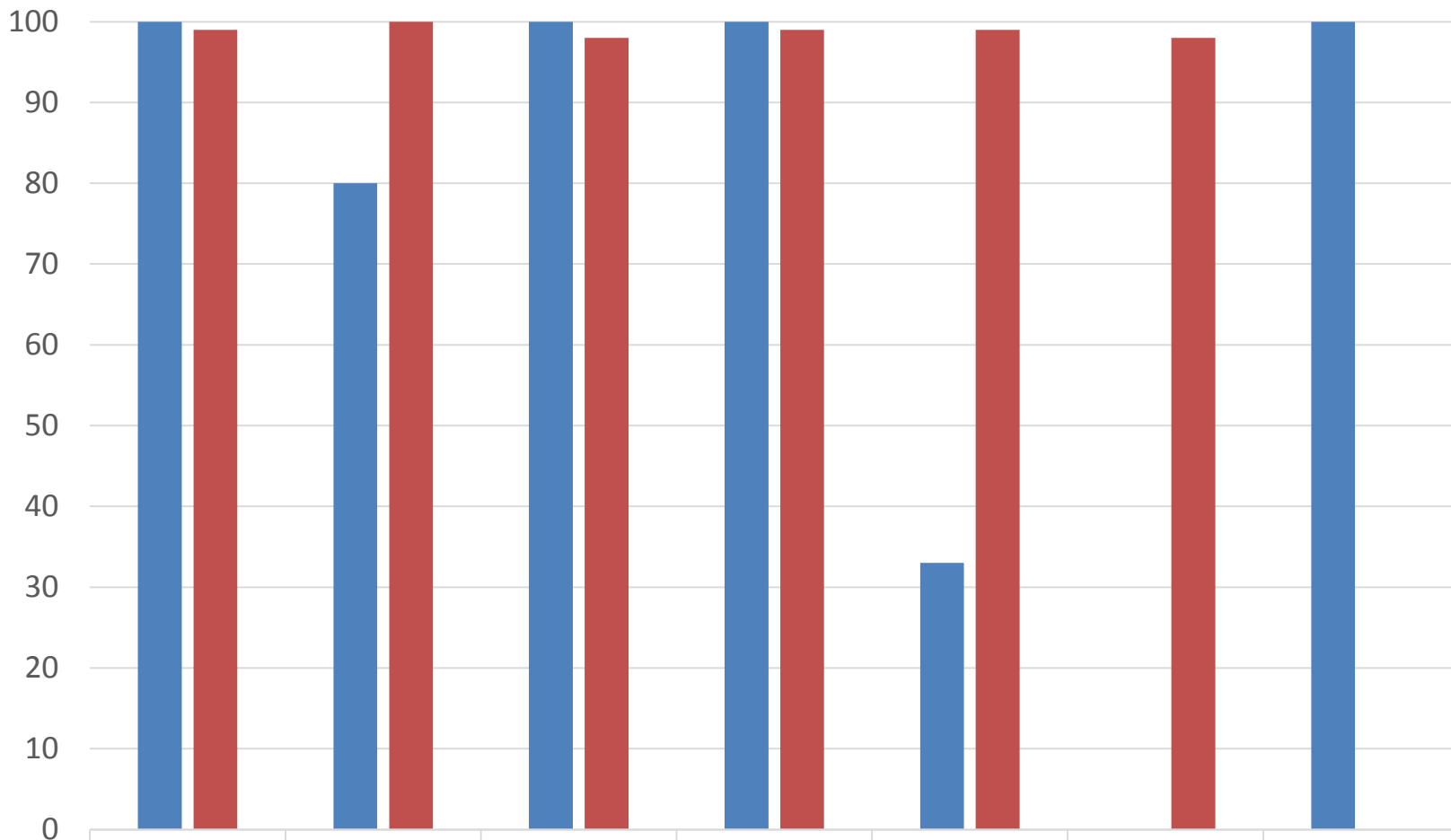
	All program completers, 2007-08 (n=10)	All program completers, 2008-09 (n=11)	All program completers, 2009-10* (n=10)	All program completers, 2010-11 (n=10)	All program completers, 2011-12* (n=7)	All program completers, 2012-13* (n=7)	All program completers, 2013-14* (n=7)	All program completers, 2014-15* (n=4)
■ Potsdam PASS RATE	100	100	90	100	100	100	86	100
■ State AVG PASS RATE	99	99	100	99	98	99	97	

■ Potsdam PASS RATE     
 ■ State AVG PASS RATE

# CHEMISTRY CST

## SUNY Potsdam vs. New York State

### Pass Rates



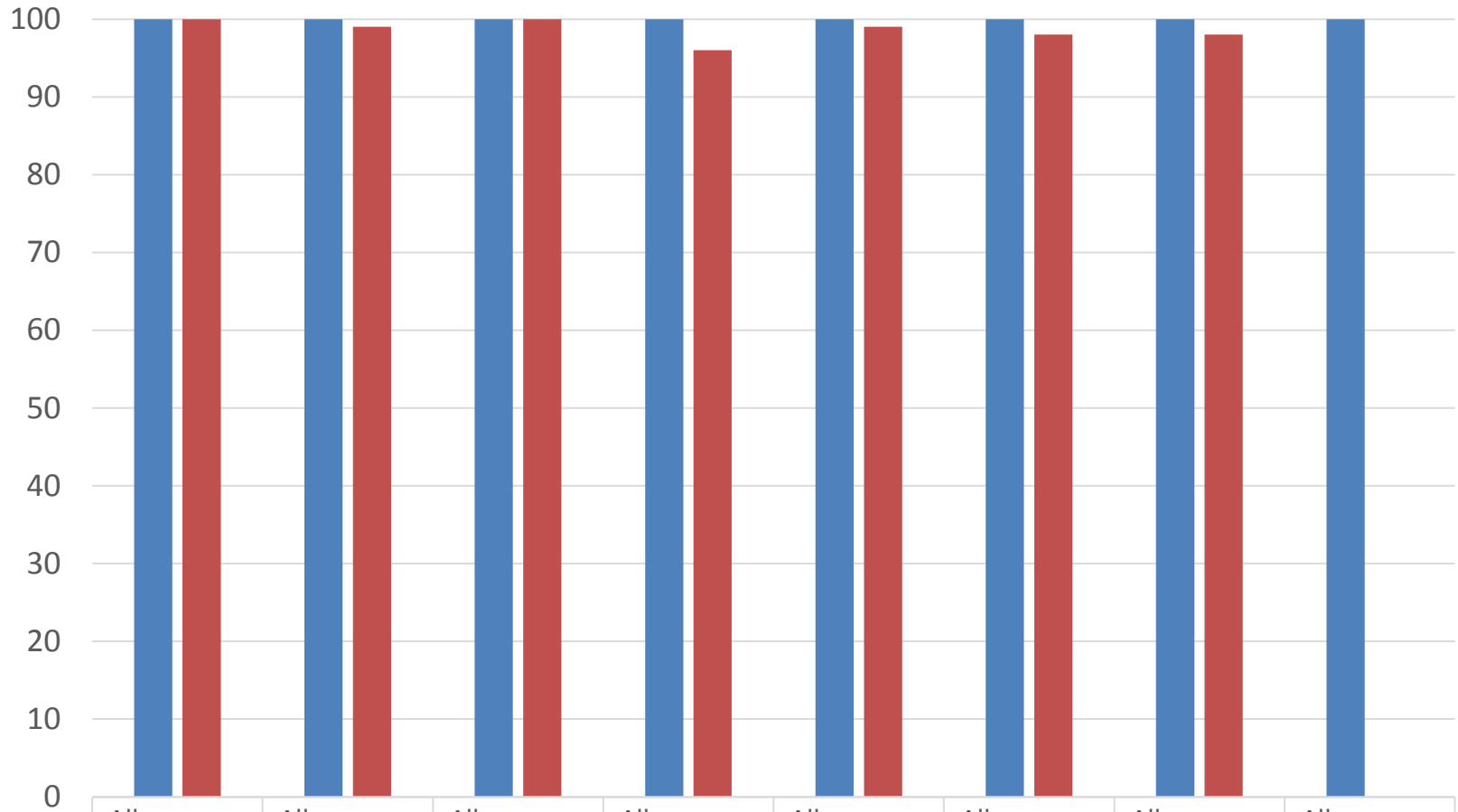
	All program completers, 2008-09* (n=7)	All program completers, 2009-10* (n=5)	All program completers, 2010-11* (n=6)	All program completers, 2011-12* (n=2)	All program completers, 2012-13* (n=3)	All program completers, 2013-14* (n=1)	All program completers, 2014-15* (n=1)
■ Potsdam PASS RATE	100	80	100	100	33	0	100
■ State AVG PASS RATE	99	100	98	99	99	98	

■ Potsdam PASS RATE     
 ■ State AVG PASS RATE

# EARTH SCIENCE CST

## SUNY Potsdam vs. New York State

### Pass Rates



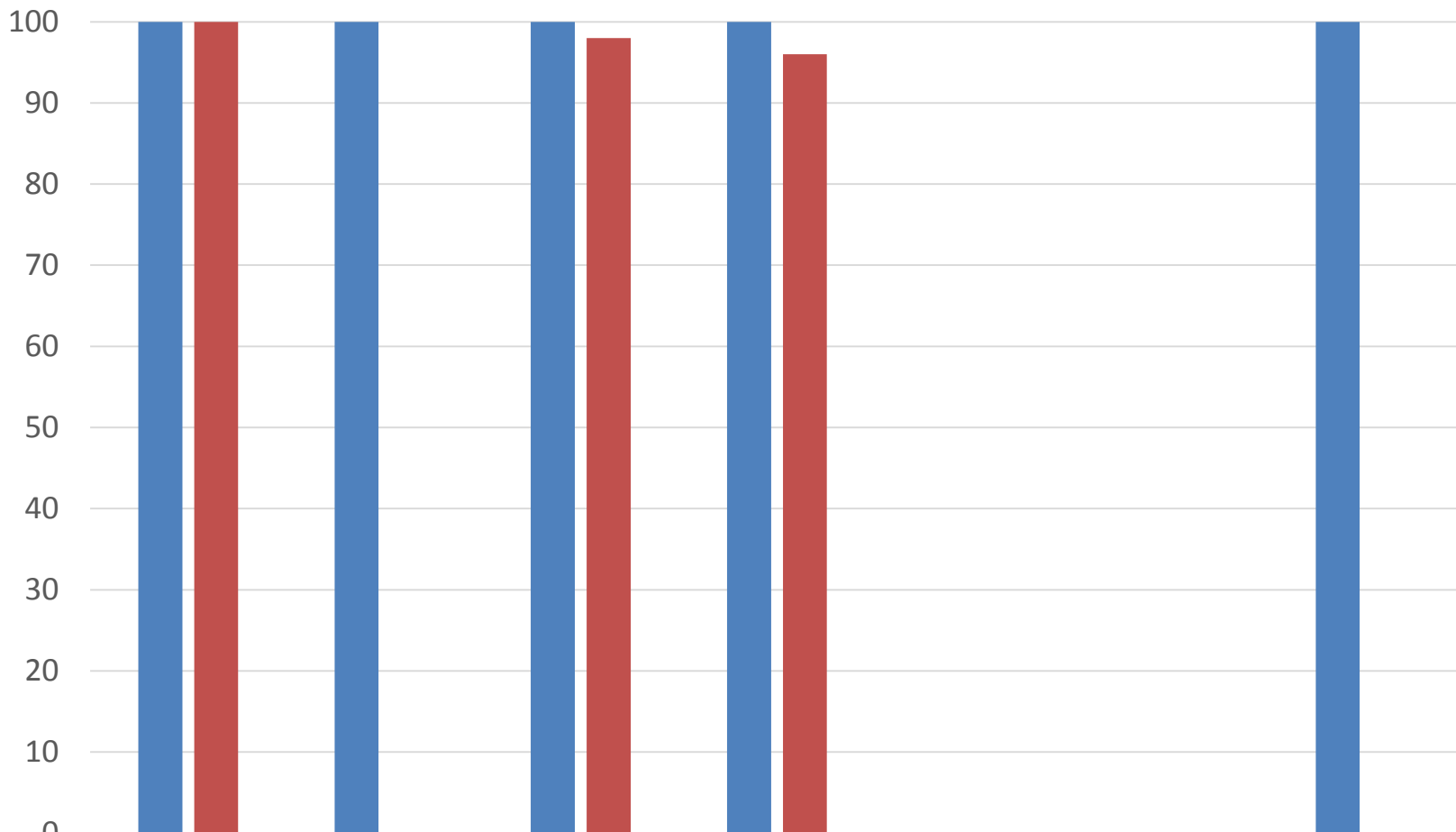
	All program completers, 2007-08* (n=6)	All program completers, 2008-09* (n=4)	All program completers, 2009-10* (n=5)	All program completers, 2010-11* (n=5)	All program completers, 2011-12* (n=3)	All program completers, 2012-13* (n=3)	All program completers, 2013-14* (n=1)	All program completers, 2014-15* (n=1)
■ Potsdam PASS RATE	100	100	100	100	100	100	100	100
■ State AVG PASS RATE	100	99	100	96	99	98	98	

■ Potsdam PASS RATE     
 ■ State AVG PASS RATE

# PHYSICS CST

## SUNY Potsdam vs. New York State

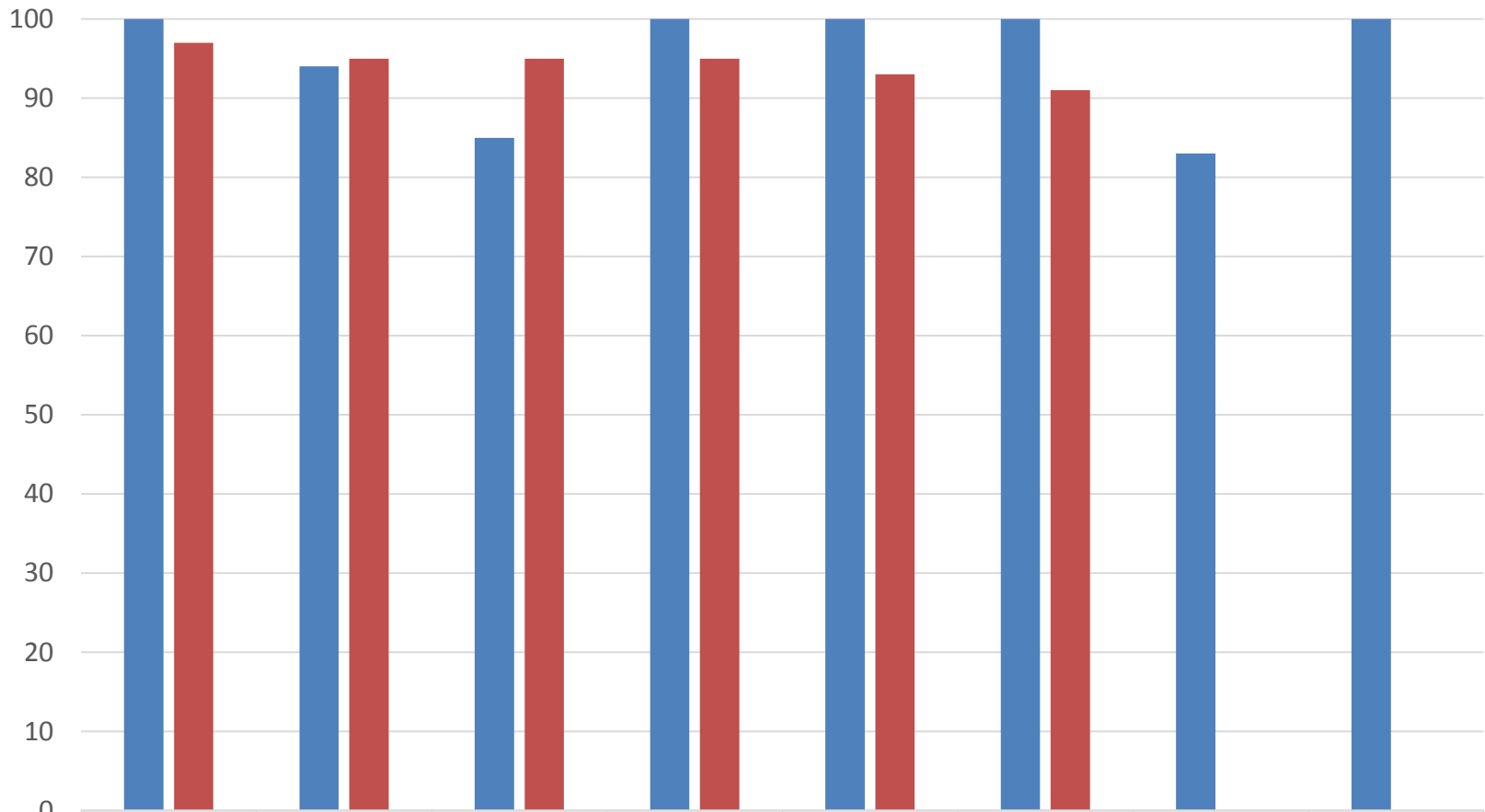
### Pass Rate



	All program completers, 2008-09* (n=2)	All program completers, 2009-10* (n=4)	All program completers, 2010-11* (n=4)	All program completers, 2011-12* (n=3)	All program completers, 2012-13* (n=0)	All program completers, 2013-14* (n=0)	All program completers, 2014-15* (n=1)
■ Potsdam PASS RATE	100	100	100	100			100
■ State AVG PASS RATE	100		98	96			

■ Potsdam PASS RATE     
 ■ State AVG PASS RATE

# English Language Arts CST SUNY Potsdam vs. New York State Pass Rate



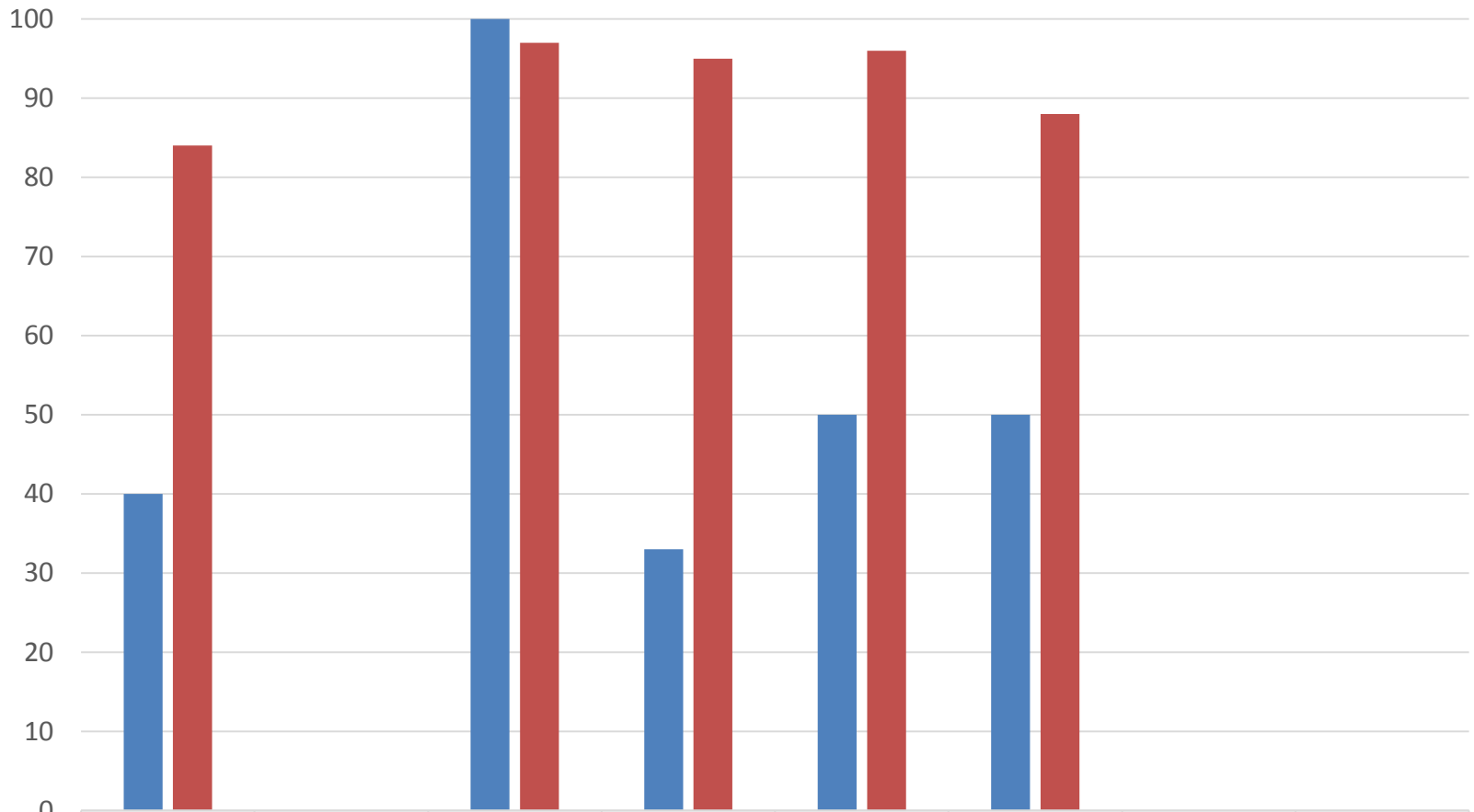
	All program completers, 2007-08 (n=17)	All program completers, 2008-09 (n=16)	All program completers, 2009-10 (n=13)	All program completers, 2010-11 (n=16)	All program completers, 2011-12 (n=17)	All program completers, 2012-13 (n=11)	All program completers, 2013-14* (n=6)	All program completers, 2014-15* (n=8)
■ Potsdam PASS RATE	100	94	85	100	100	100	83	100
■ State AVG PASS RATE	97	95	95	95	93	91		

■ Potsdam PASS RATE    ■ State AVG PASS RATE

# FRENCH CST

## SUNY Potsdam vs. New York State

### Pass Rates



	All program completers, 2007-08 (n=5)	All program completers, 2008-09* (n=0)	All program completers, 2009-10* (n=3)	All program completers, 2010-11* (n=3)	All program completers, 2011-12* (n=2)	All program completers, 2012-13* (n=4)	All program completers, 2013-14* (n=1)	All program completers, 2014-15* (n=0)
■ Potsdam PASS RATE	40		100	33	50	50	0	
■ State AVG PASS RATE	84		97	95	96	88		

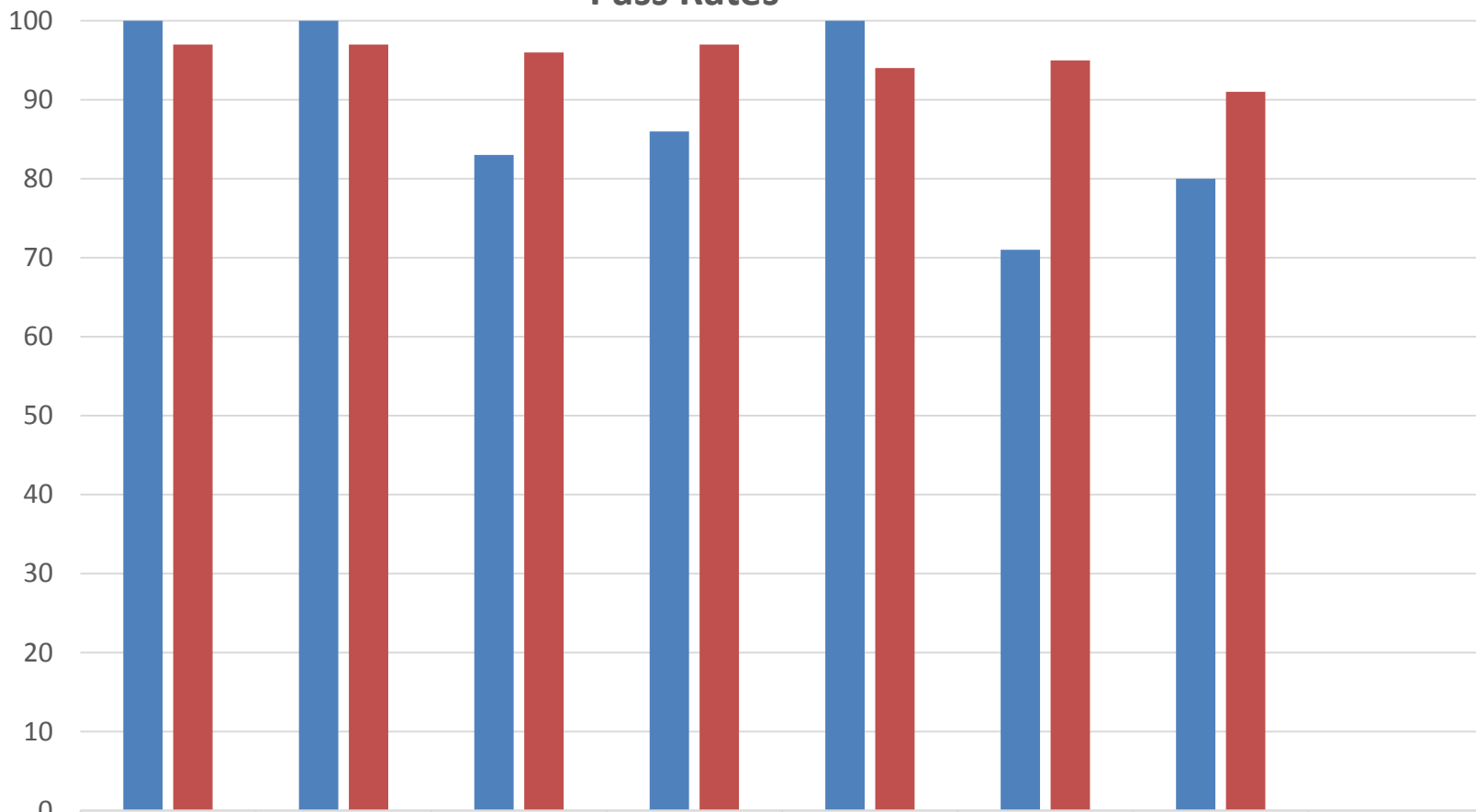
■ Potsdam PASS RATE    ■ State AVG PASS RATE



# SPANISH CST

## SUNY Potsdam vs. New York State

### Pass Rates



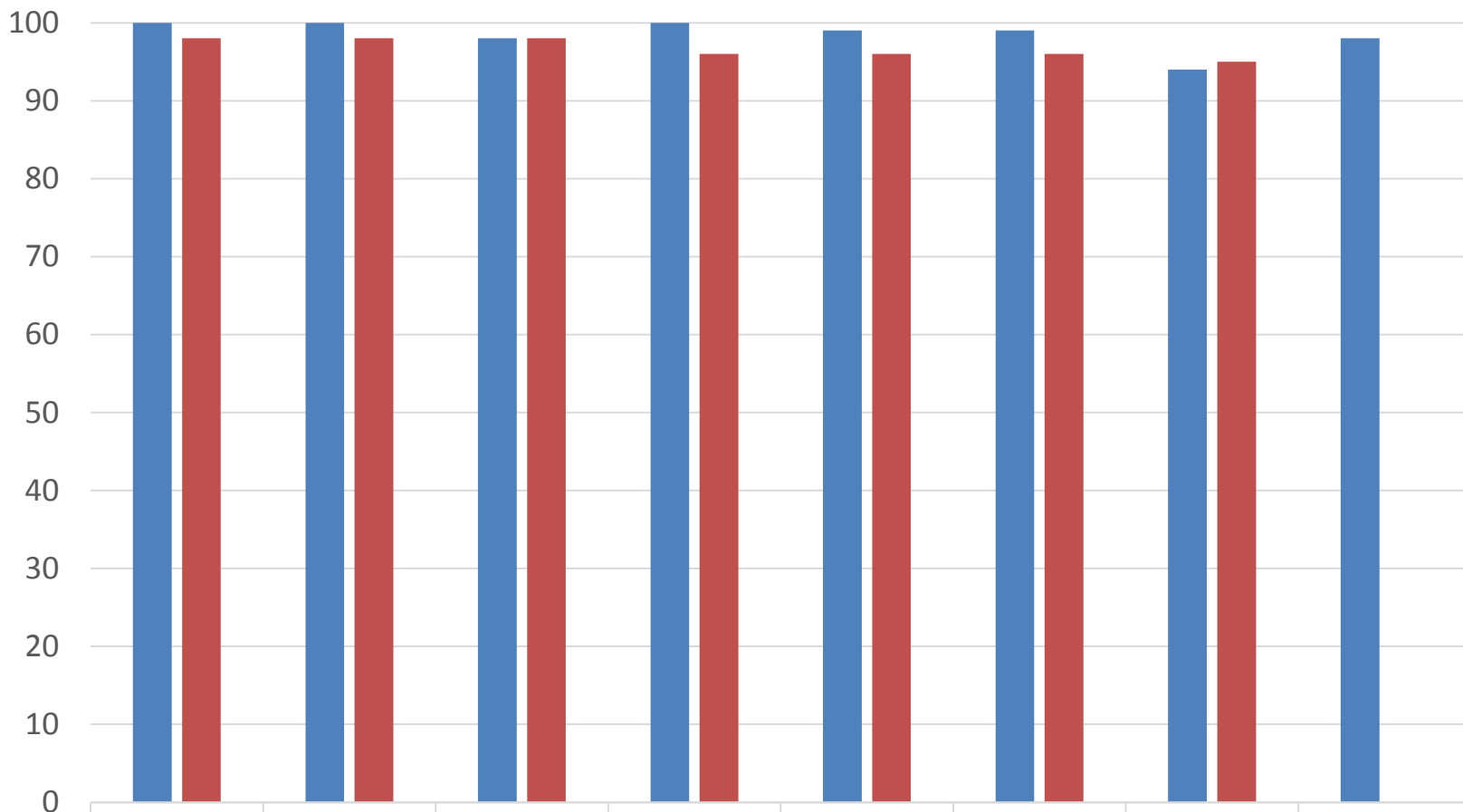
	All program completers, 2007-08* (n=6)	All program completers, 2008-09* (n=5)	All program completers, 2009-10* (n=6)	All program completers, 2010-11* (n=7)	All program completers, 2011-12* (n=5)	All program completers, 2012-13* (n=7)	All program completers, 2013-14* (n=5)	All program completers, 2014-15* (n=0)
■ Potsdam PASS RATE	100	100	83	86	100	71	80	
■ State AVG PASS RATE	97	97	96	97	94	95	91	

■ Potsdam PASS RATE    ■ State AVG PASS RATE

# Music CST

## SUNY Potsdam vs. New York State

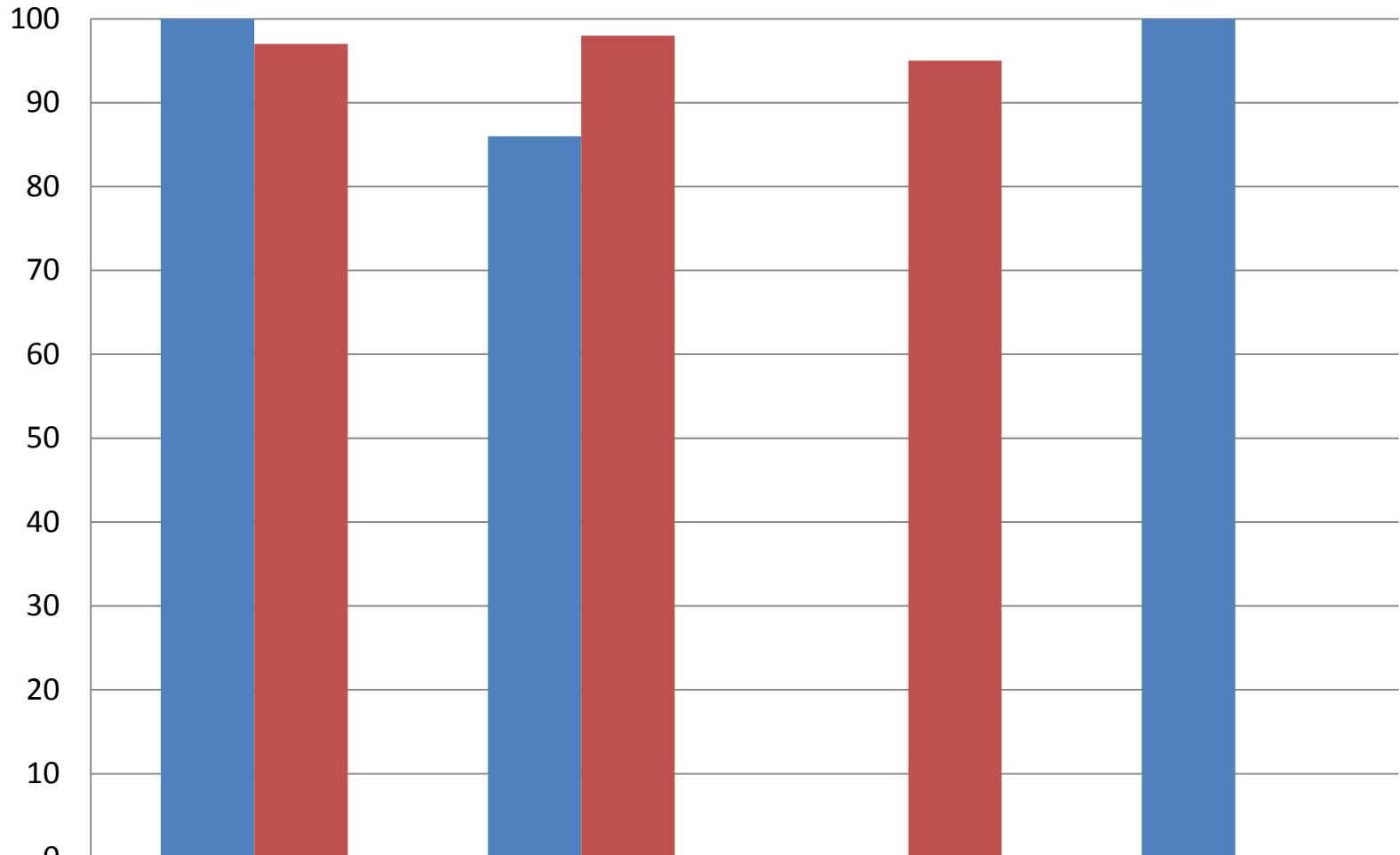
### Pass Rate



	All program completers, 2007-08 (n=87)	All program completers, 2008-09(n=87)	All program completers, 2009-10 (n=64)	All program completers, 2010-11 (n=81)	All program completers, 2011-12 (n=72)	All program completers, 2012-13 (n=67)	All program completers, 2013-14 (n=70)	All program completers, 2014-15* (n=51)
■ Potsdam PASS RATE	100	100	98	100	99	99	94	98
■ State AVG PASS RATE	98	98	98	96	96	96	95	

■ Potsdam PASS RATE    ■ State AVG PASS RATE

# THEATRE CST SUNY POTSDAM VS. NEW YORK STATE PASS RATE

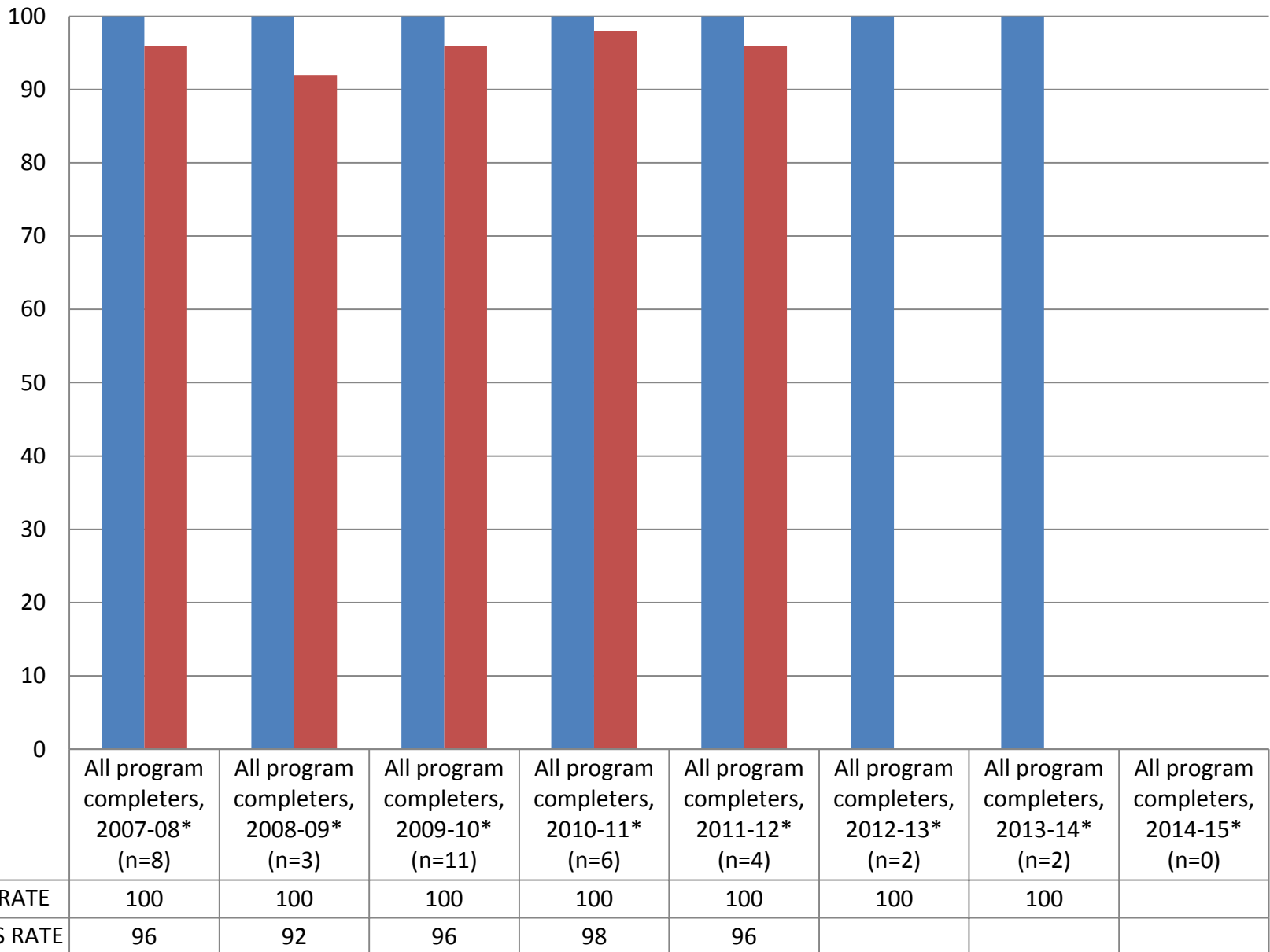


	All program completers, 2011-12* (n=3)	All program completers, 2012-13* (n=7)	All program completers, 2013-14* (n=0)	All program completers, 2014-15* (n=2)
■ Potsdam PASS RATE	100	86	100	100
■ State AVG PASS RATE	97	98	95	95

# Educational Technology Specialist CST

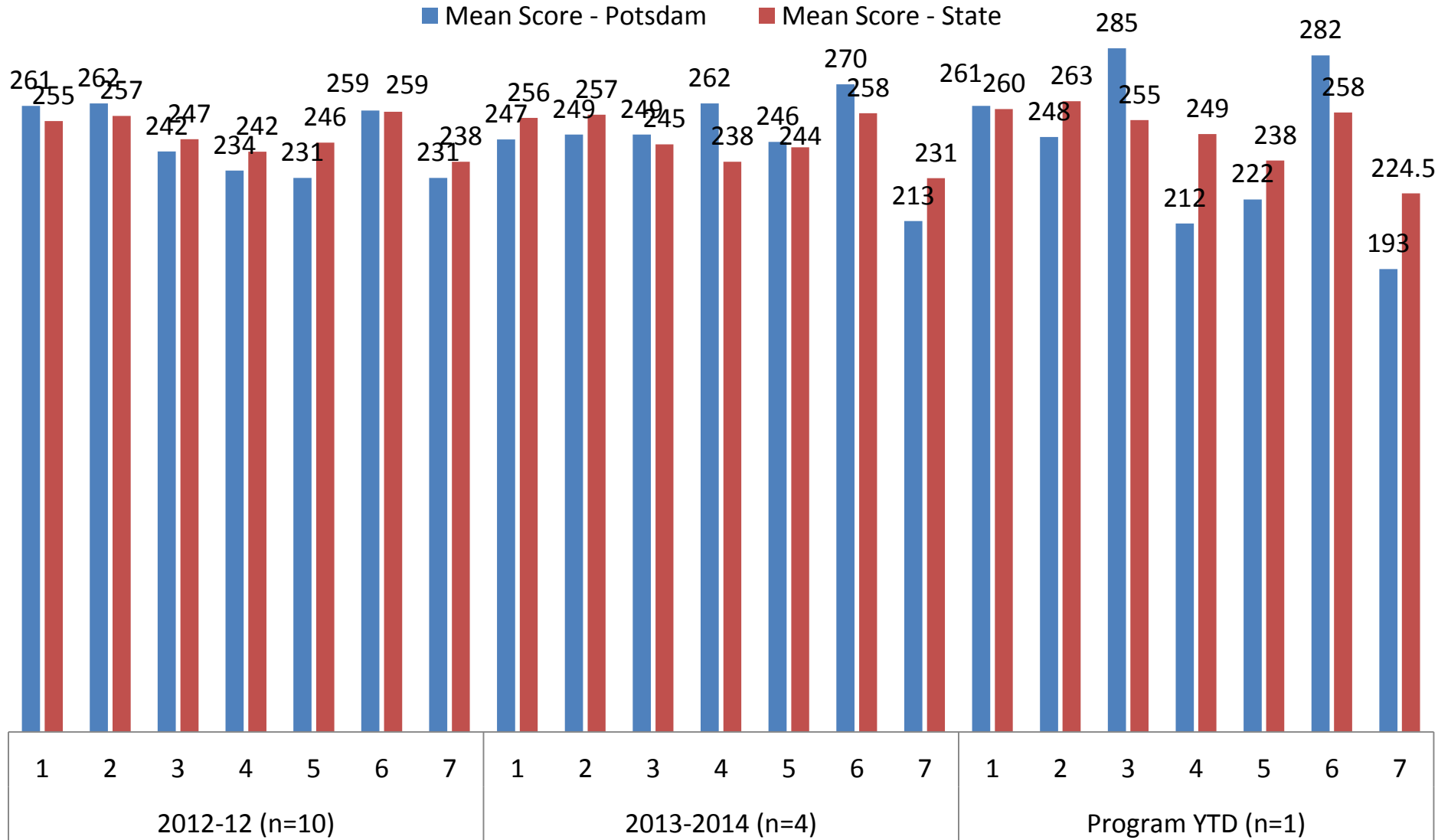
## SUNY Potsdam vs. New York State

### Pass Rate



# Sample: Can provide a break out of subarea mean scores for CSTs

## BIOLOGY CST SUB AREA MEAN SCORES

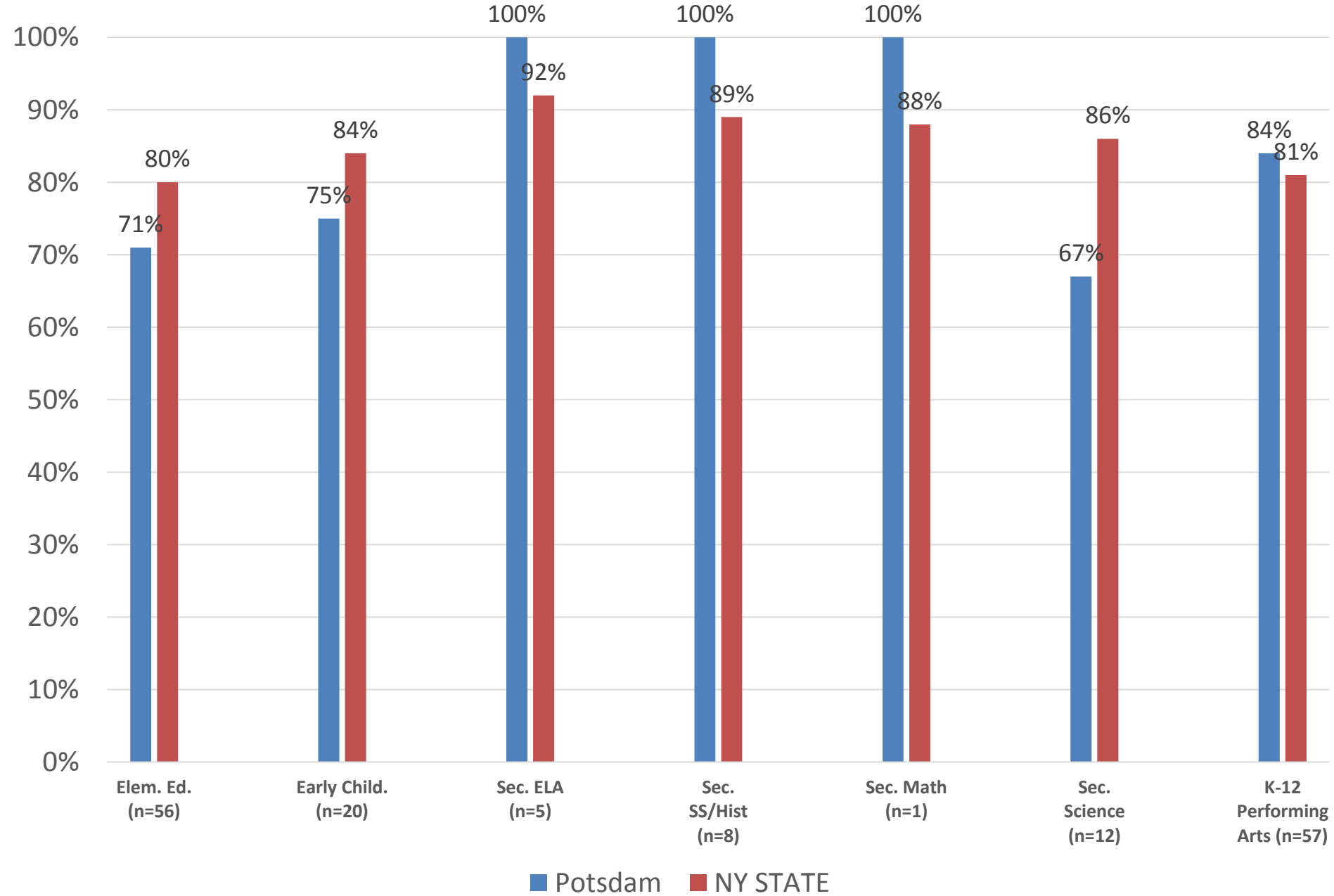


# edTPA

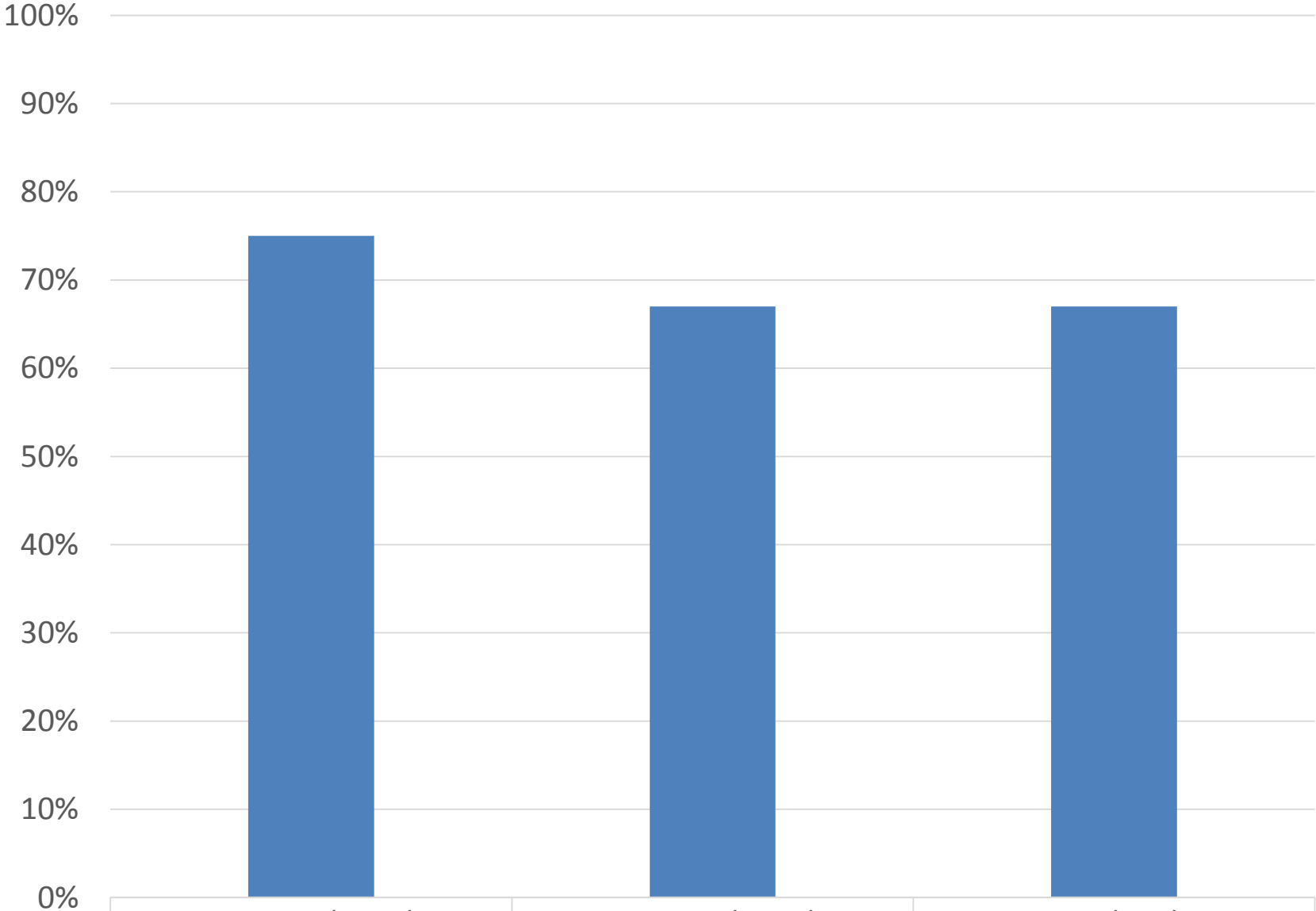
- The following slides are pass rates by test year.
- SUNY Potsdam versus State Overall
- Data retrieved from Pearson NYSTCE dashboard.
- \*For any Potsdam  $n < 10$ , overall means retrieved from Banner; sub-scores not available.

# edTPA Pass Rates

## 2013-14



# Early Childhood edTPA Pass Rates



■ Early Childhood

2013-14 (n=20)

2014-15 (n=18)

YTD (n=3)

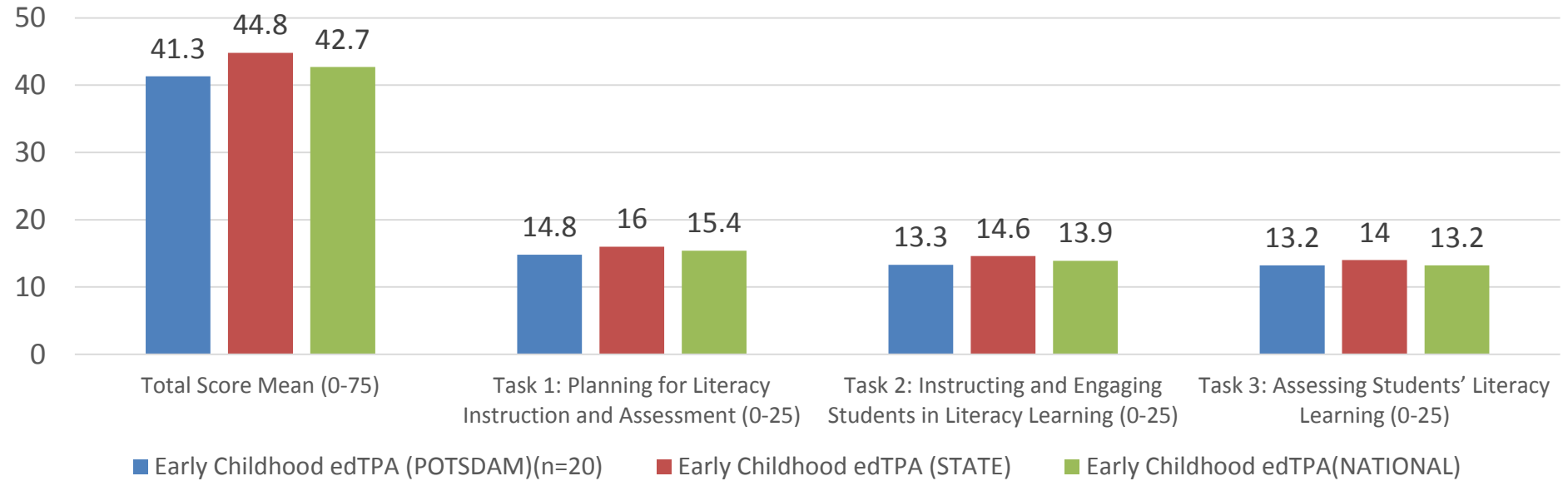
75%

67%

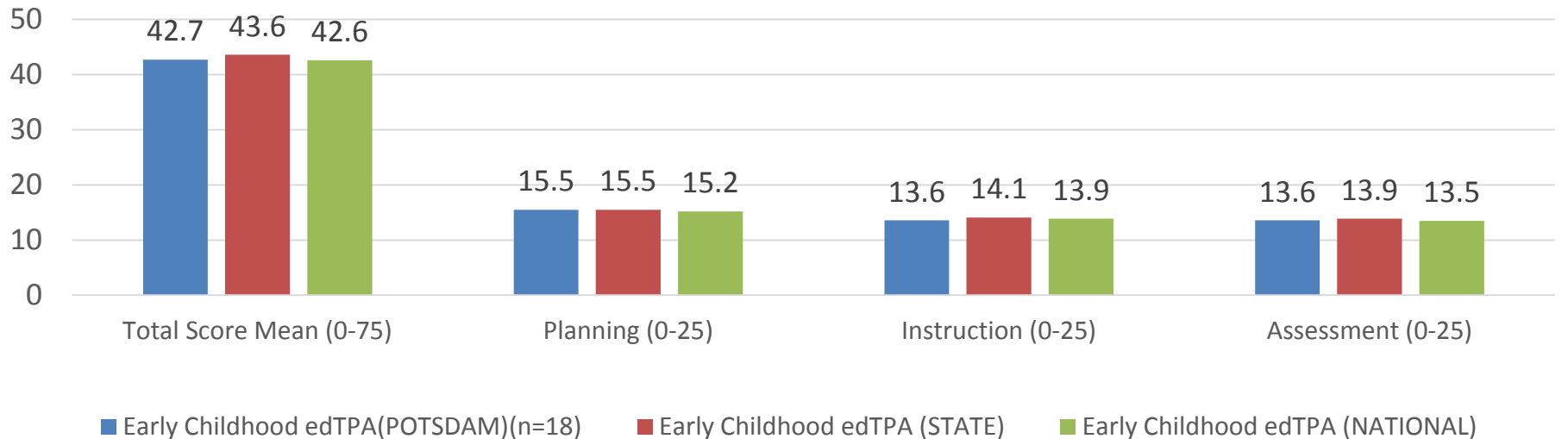
67%



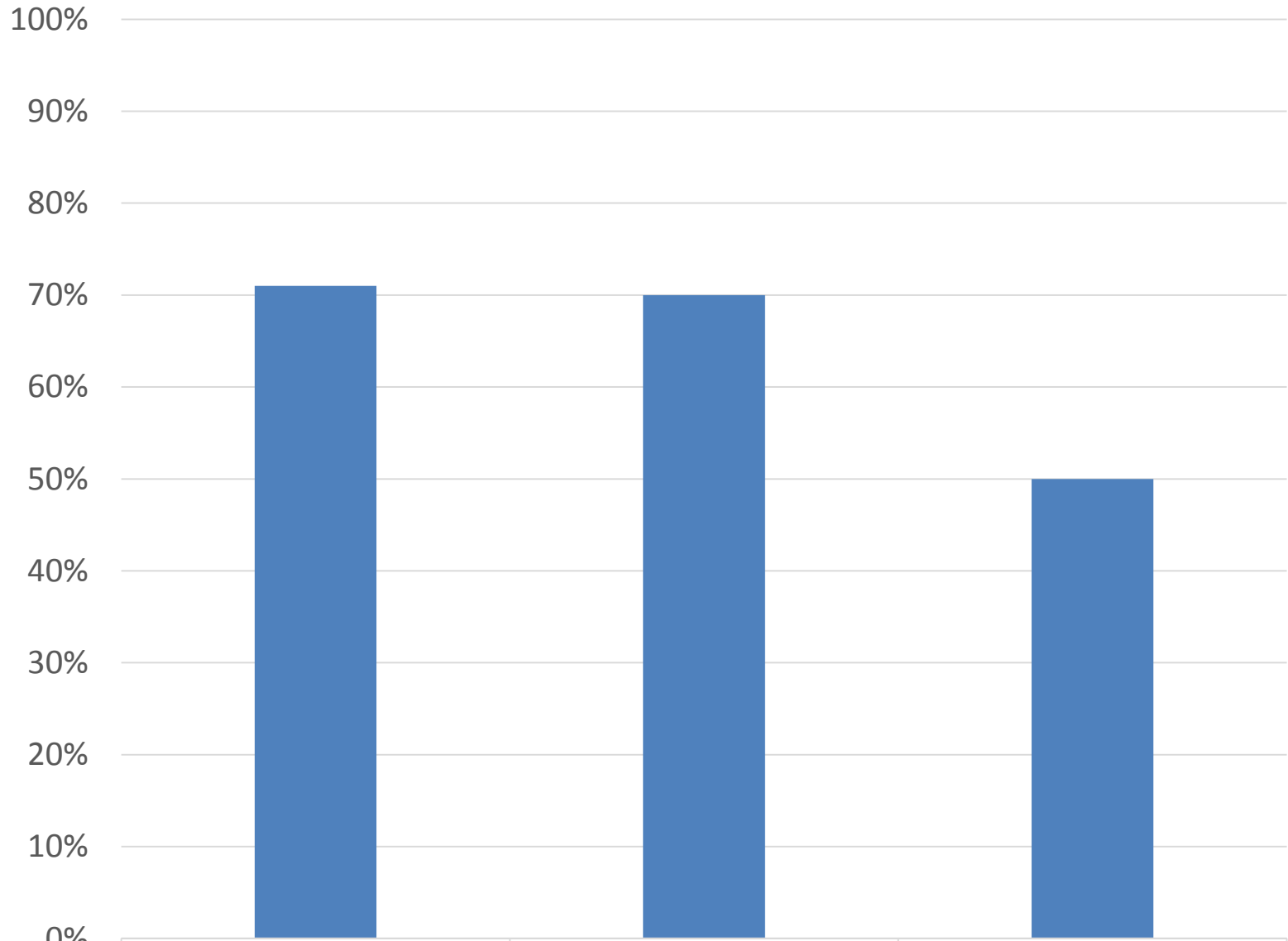
## Early Childhood edTPA 2013-14 (Sept 2013 to August 2014)



## Early Childhood edTPA 2014-15 (Sept 2014 to Aug 2015)



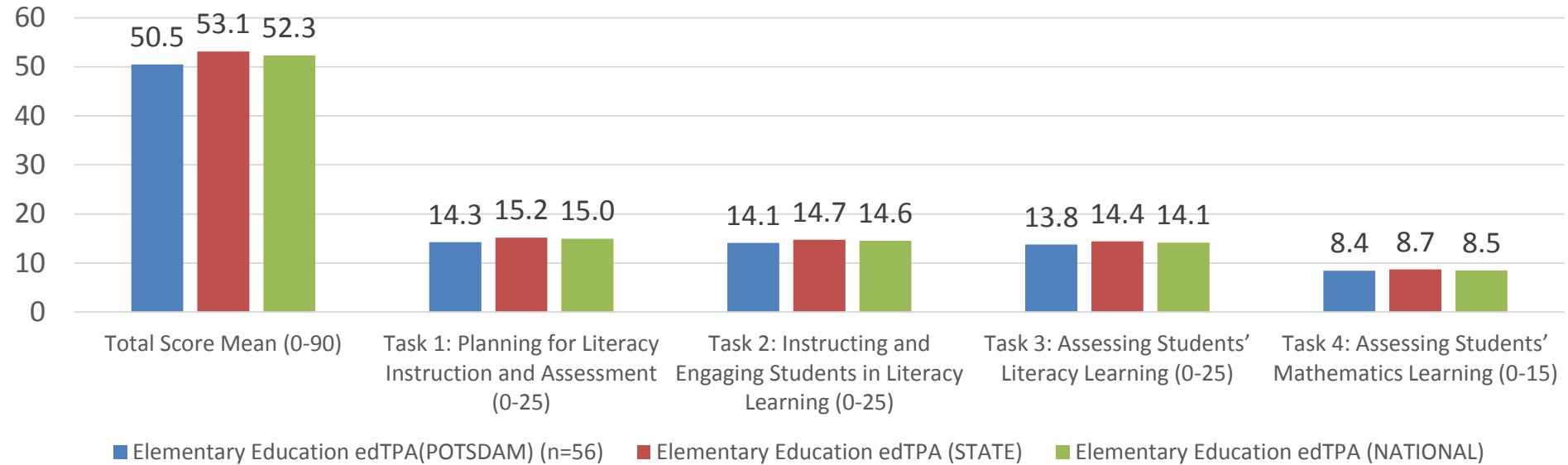
# Elementary Education edTPA Pass Rates



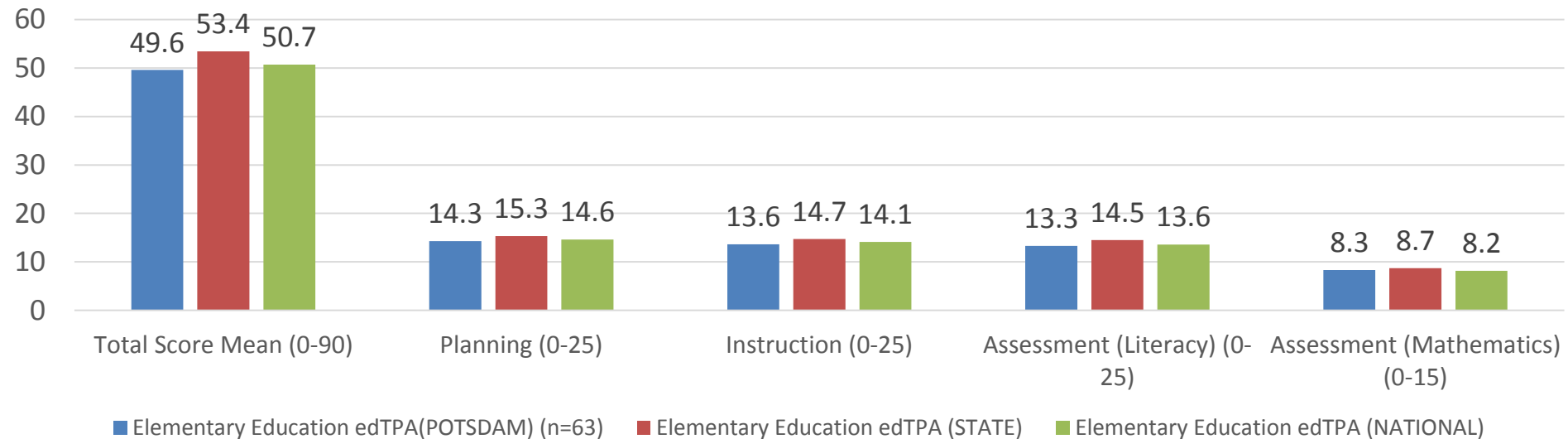
■ Elementary Education

2013-14 (n=56)	2014-15 (n=63)	YTD (n=4)
71%	70%	50%

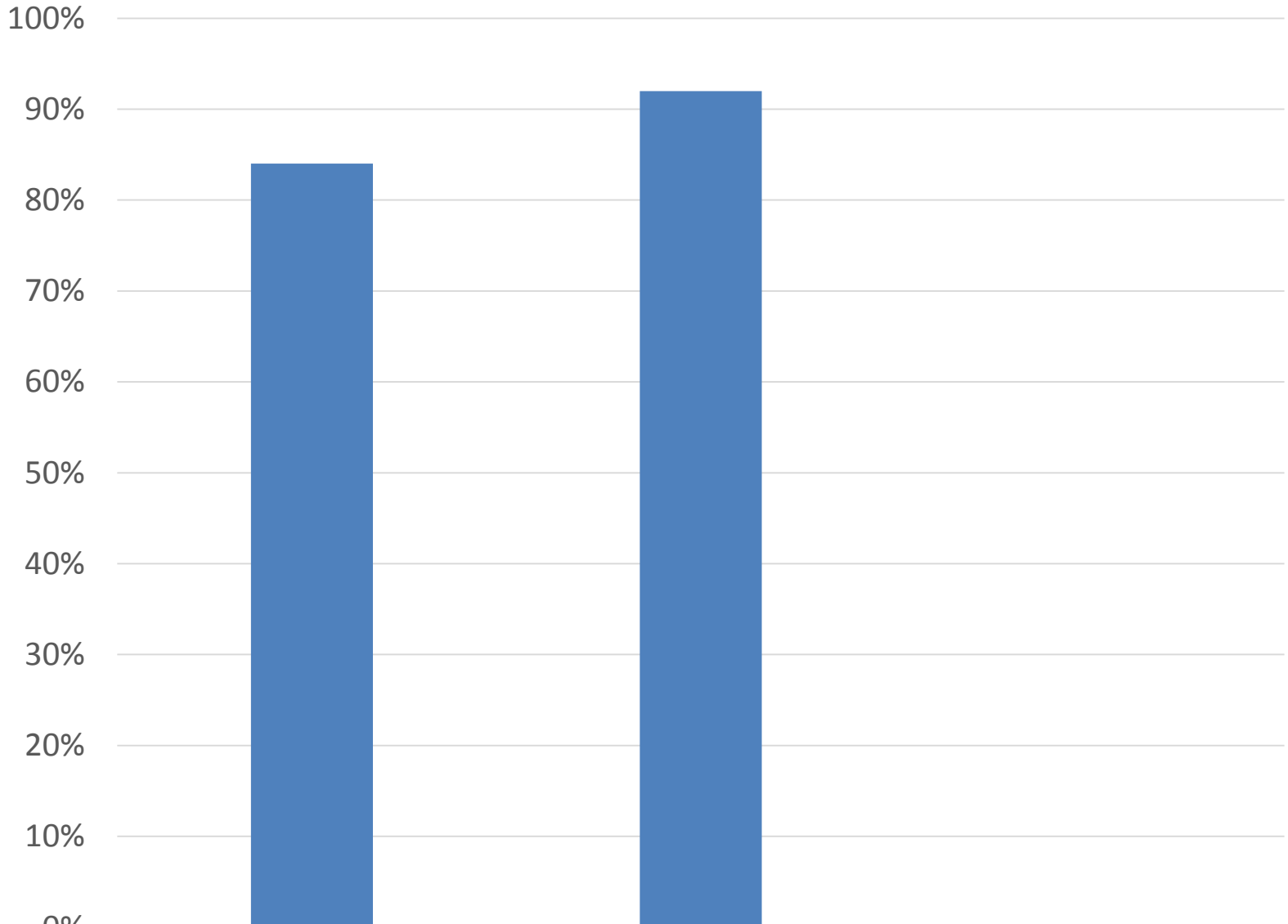
## Elementary Education edTPA 2013-14 (Sept. 2013 to August 2014)



## Elementary Education edTPA 2014-15 (Sept 2014 to Aug 2015)



# K-12 Performing Arts edTPA Pass Rates



■ K-12 Performing Arts

2013-14 (n=57)

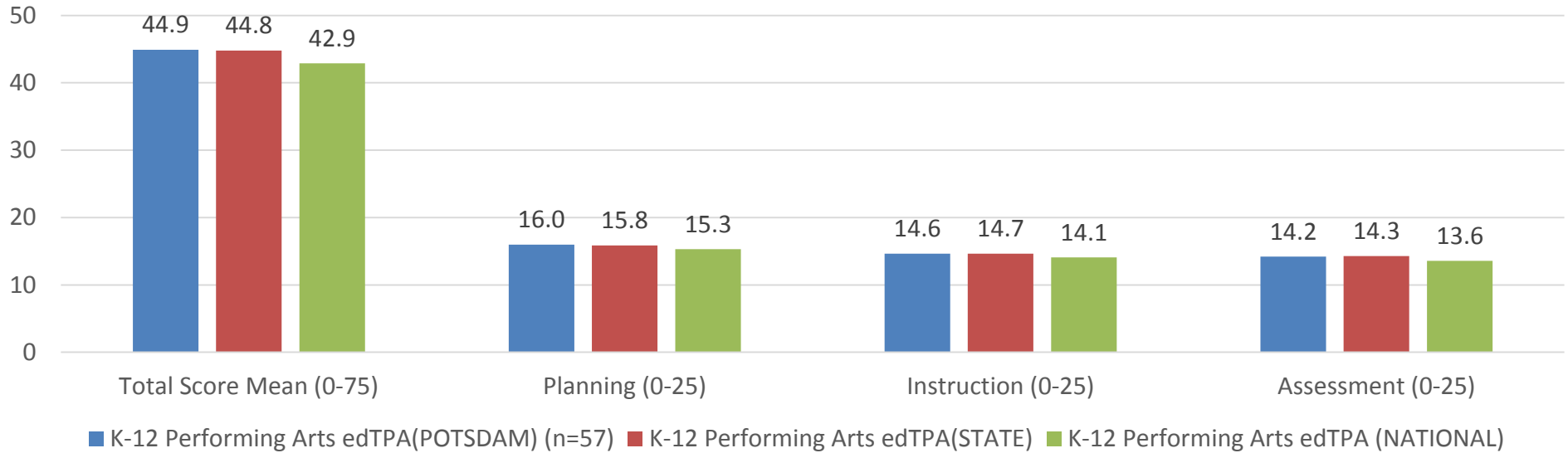
2014-15 (n=66)

YTD

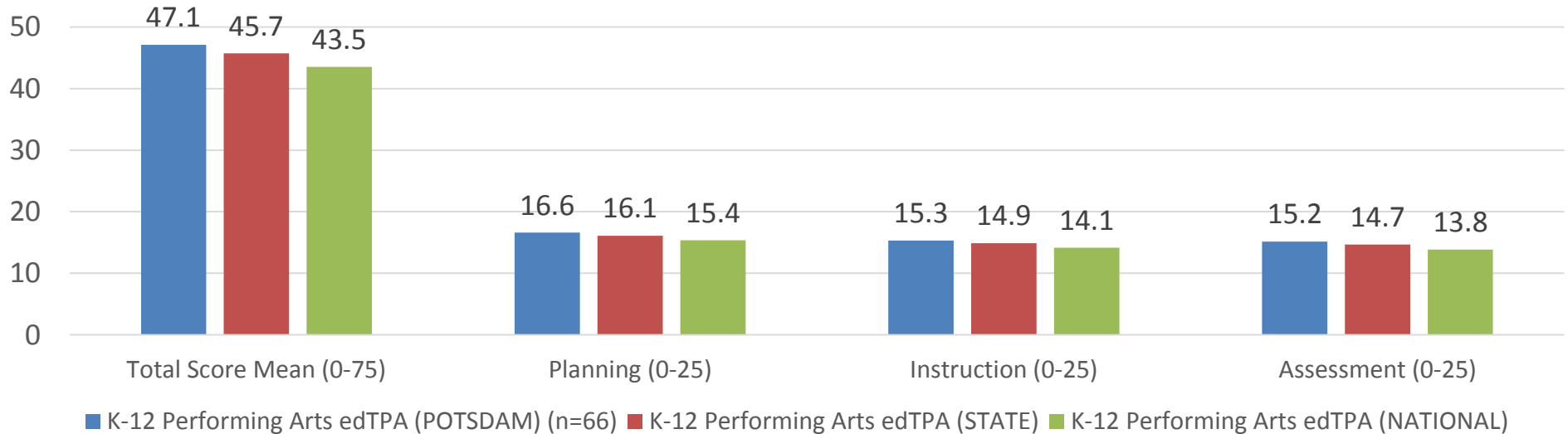
84%

92%

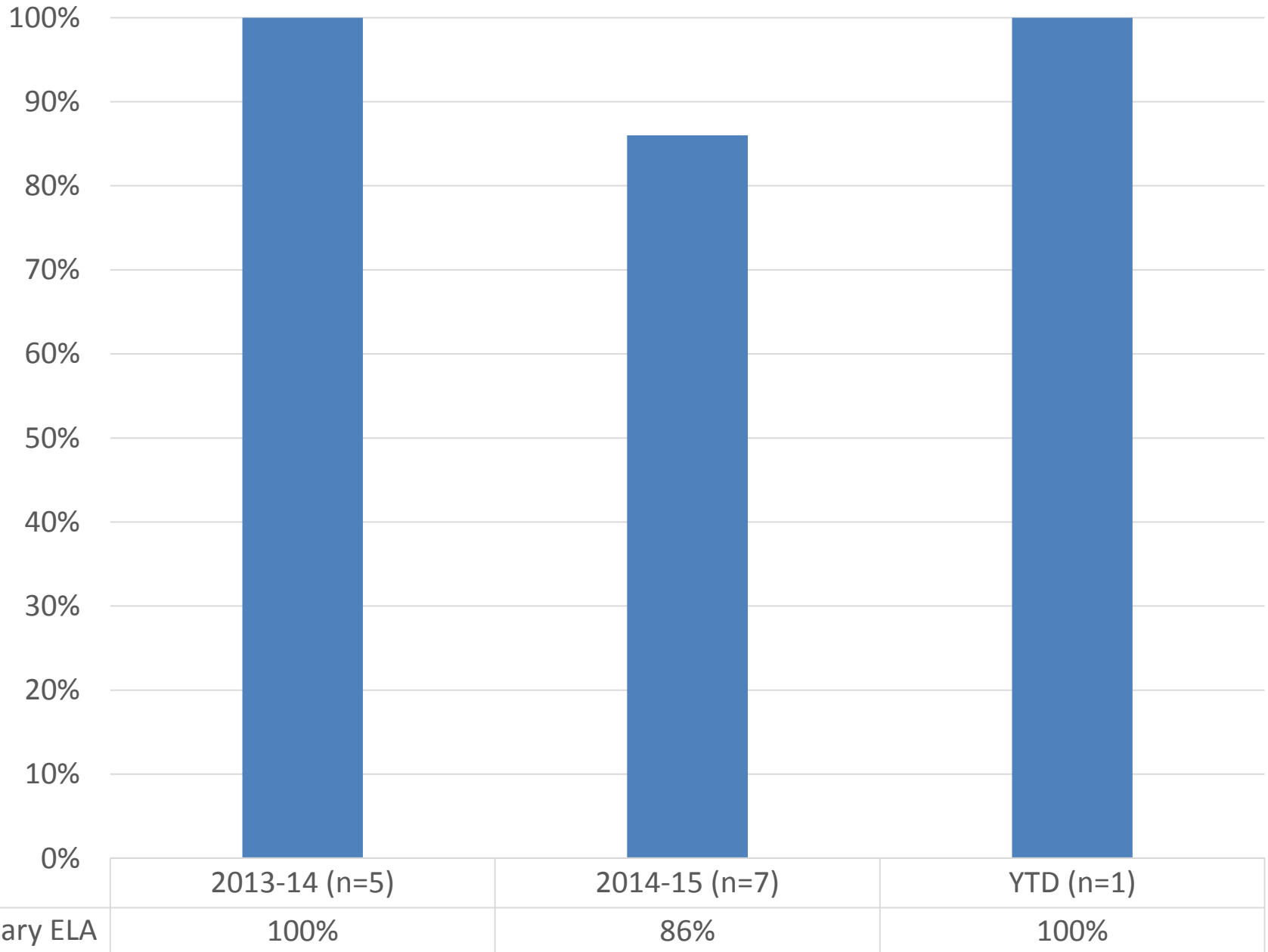
### K-12 Performing Arts edTPA 2013-14 (Sept 2013 to Aug 2014)



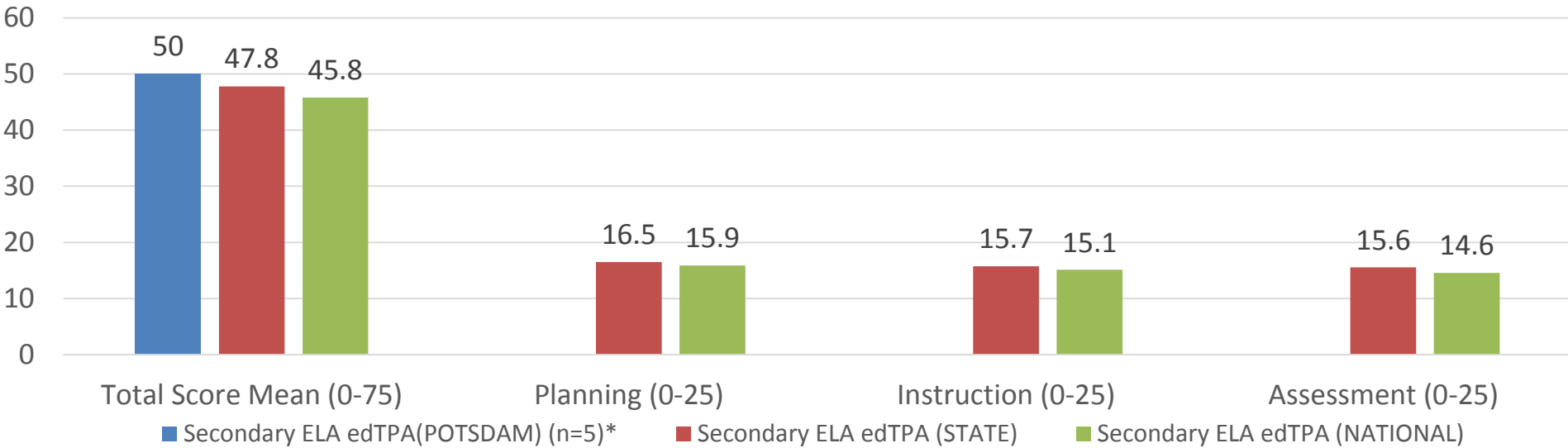
### K-12 Performing Arts edTPA 2014-15 (Sept 2014 to Aug 2015)



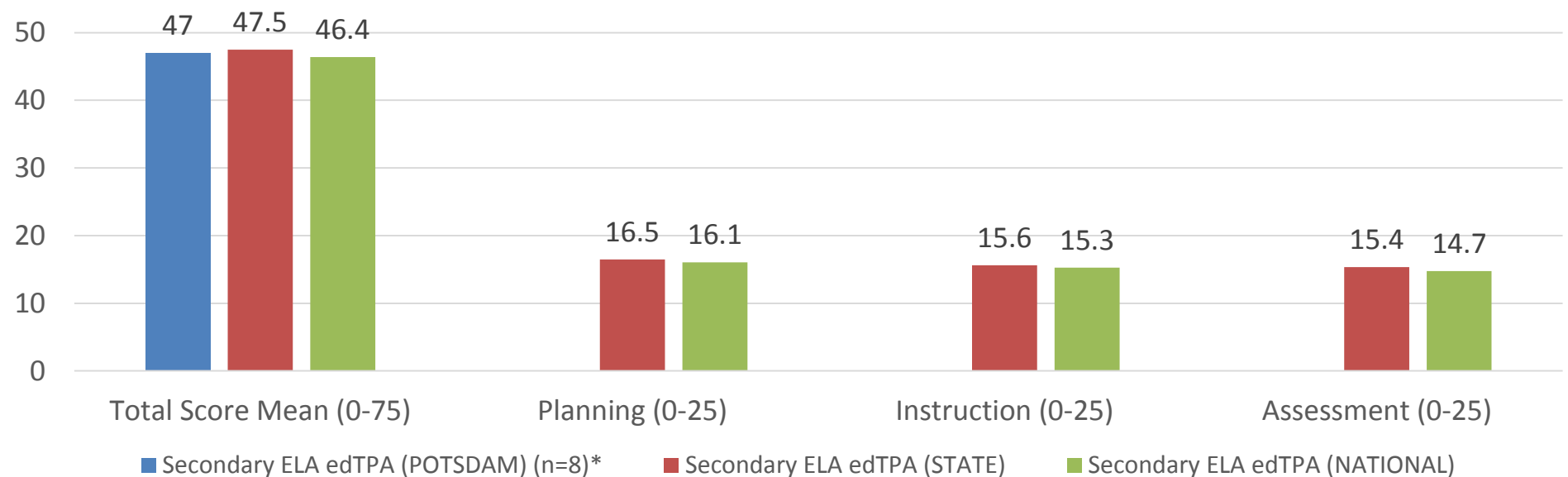
## Secondary ELA edTPA Pass Rates



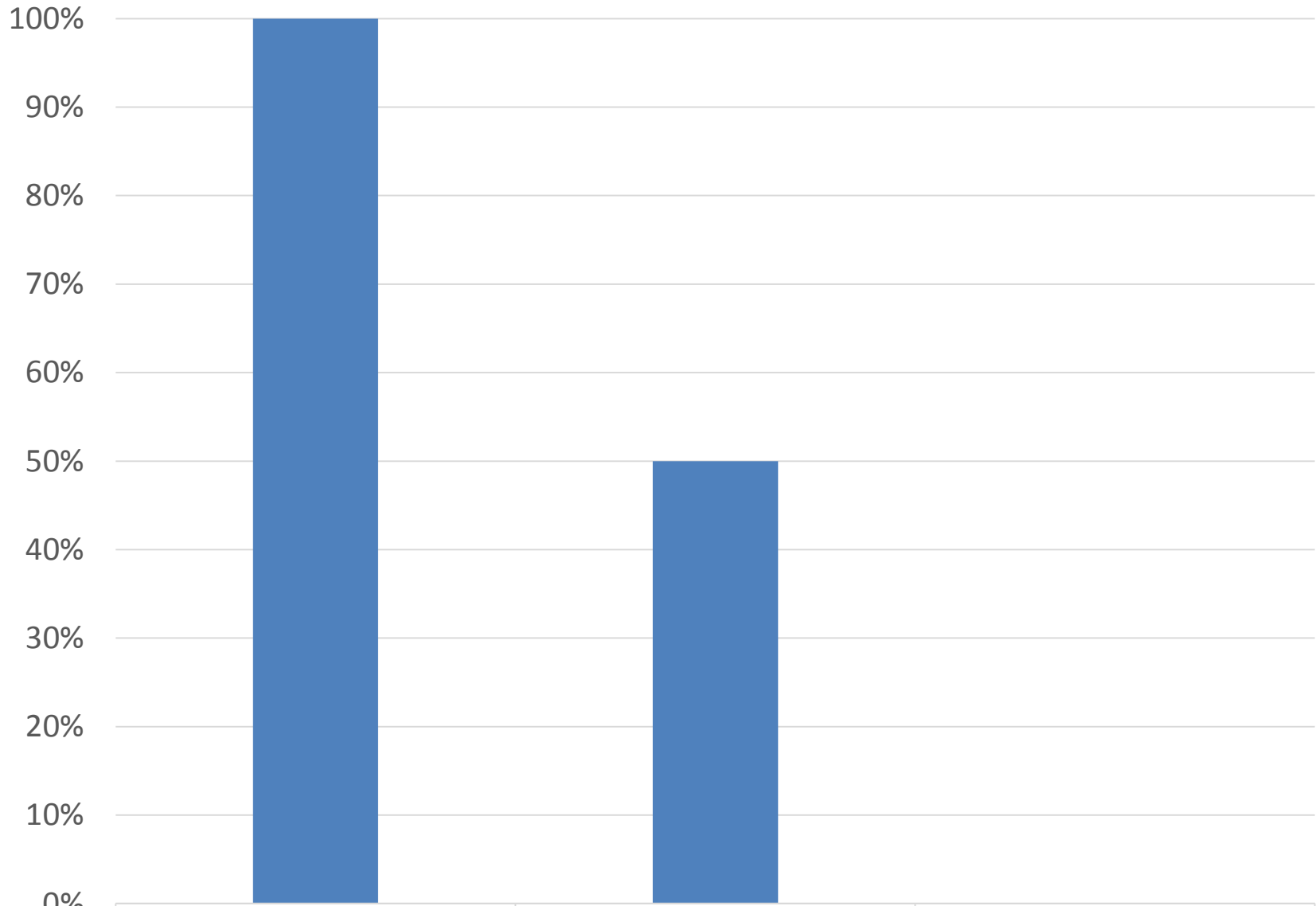
### Secondary ELA edTPA 2013-14 (Sept 2013 to Aug 2014)



### Secondary ELA edTPA 2014-15 (Sept 2014 to Aug 2015)



# Secondary Math edTPA Pass Rates



■ Secondary Math

2013-14 (n=1)

2014-15 (n=4)

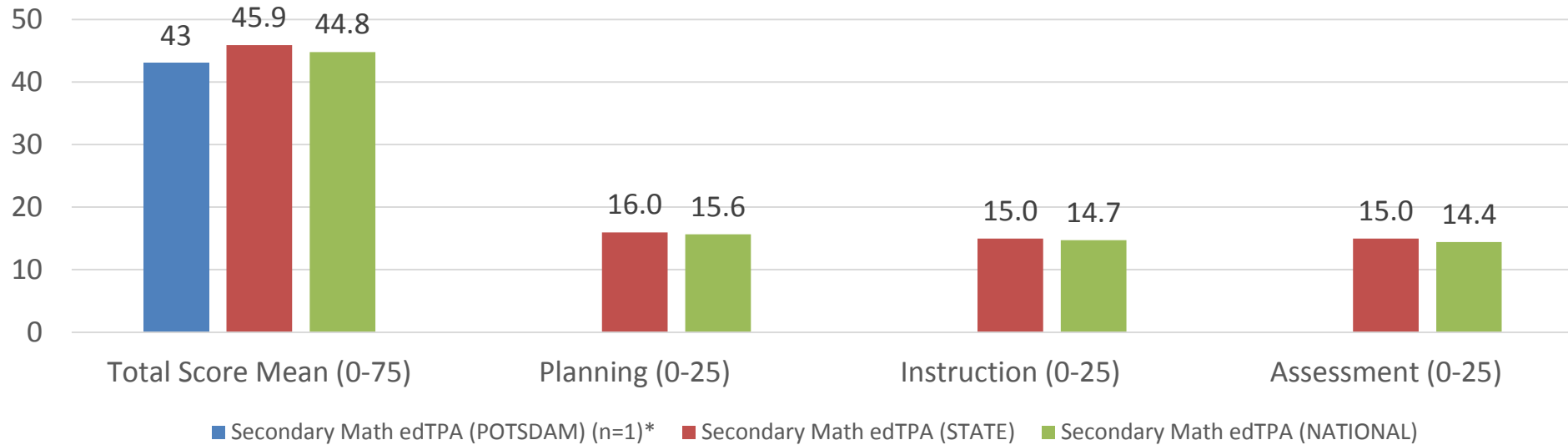
YTD

100%

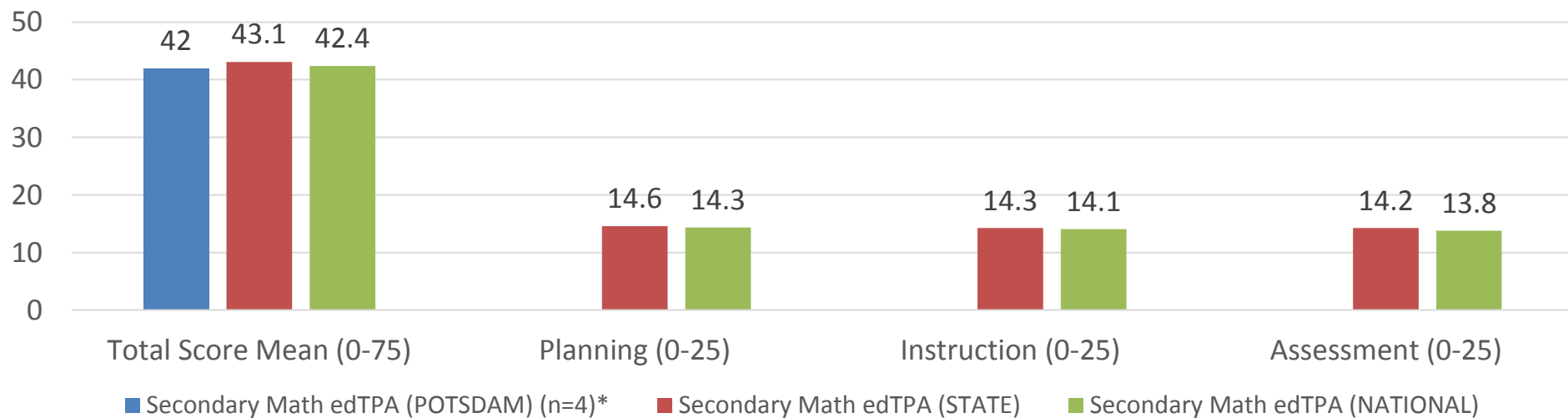
50%



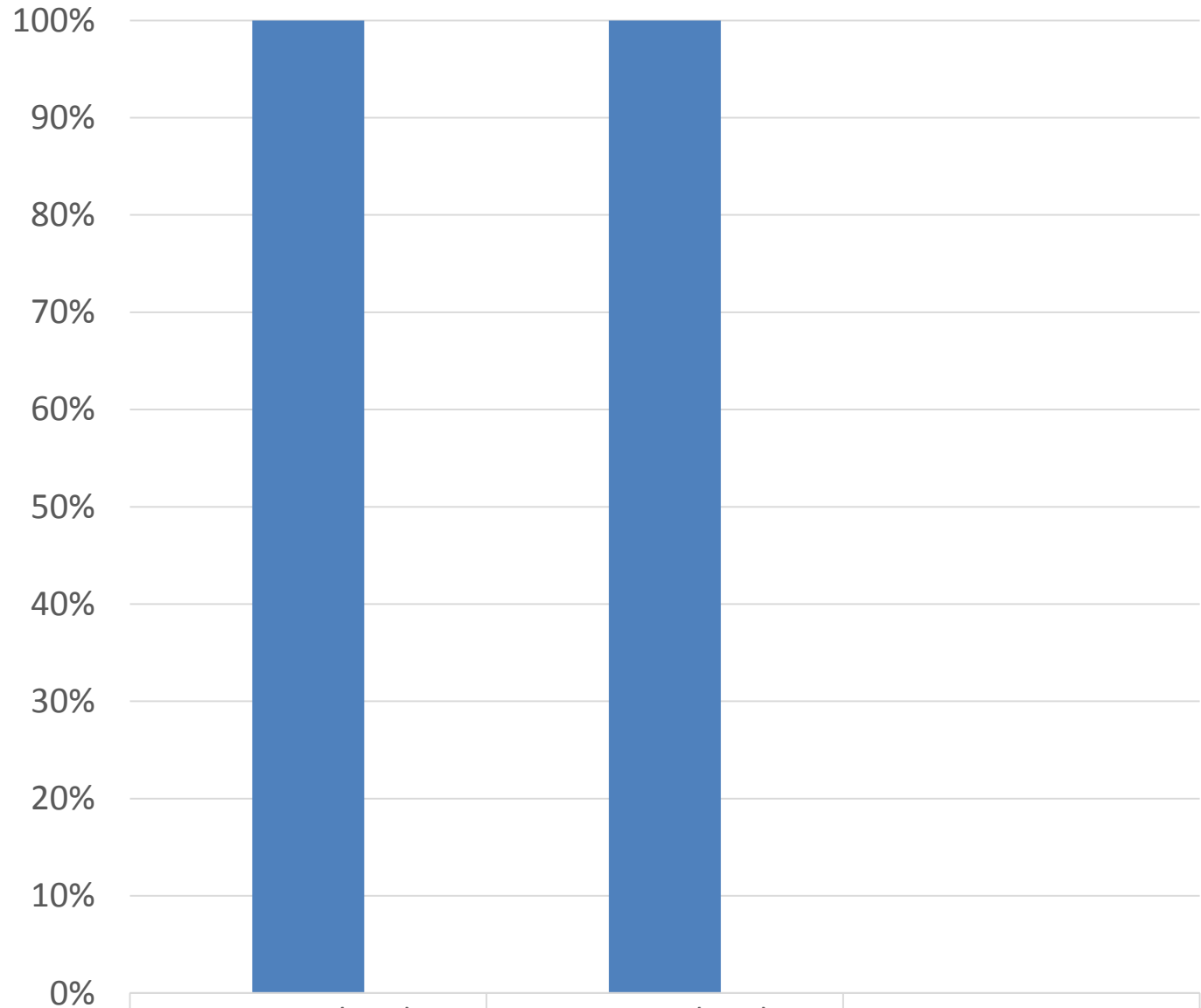
## Secondary Math edTPA 2013-14 (Sept 2013 to Aug 2014)



## Secondary Math edTPA 2014-15 (Sept 2014 to Aug 2015)



# Secondary Social Studies/History edTPA Pass Rates



■ Secondary Social Studies/History

2013-14 (n=8)

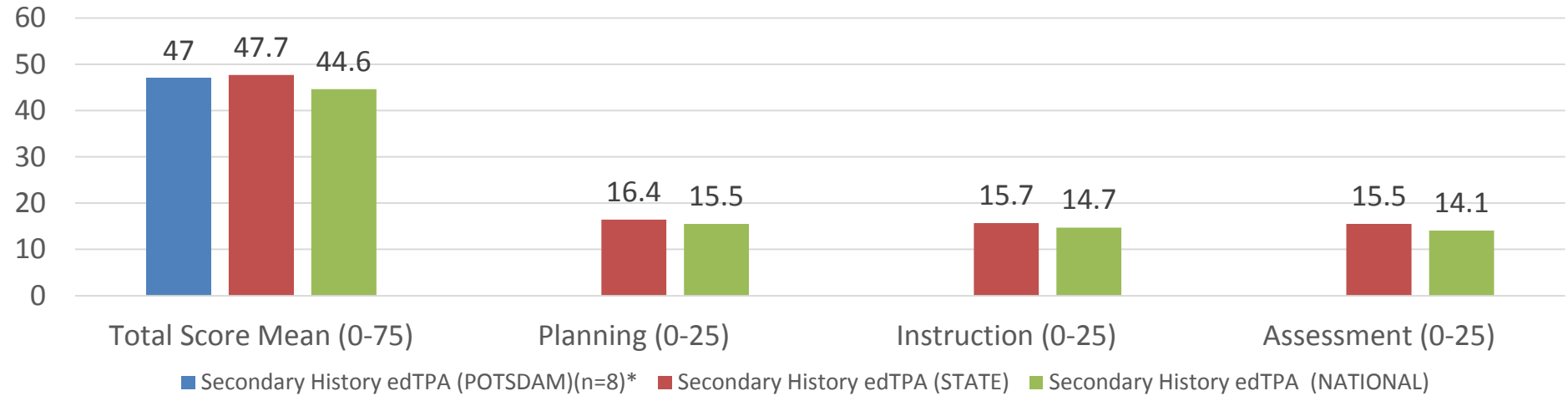
2014-15 (n=2)

YTD

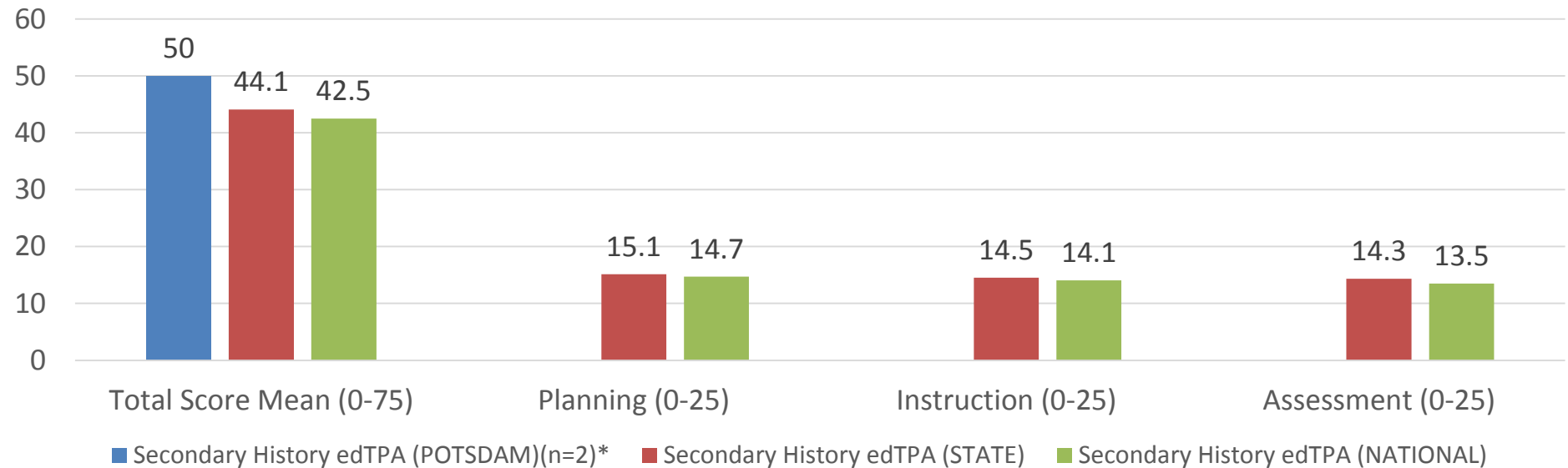
100%

100%

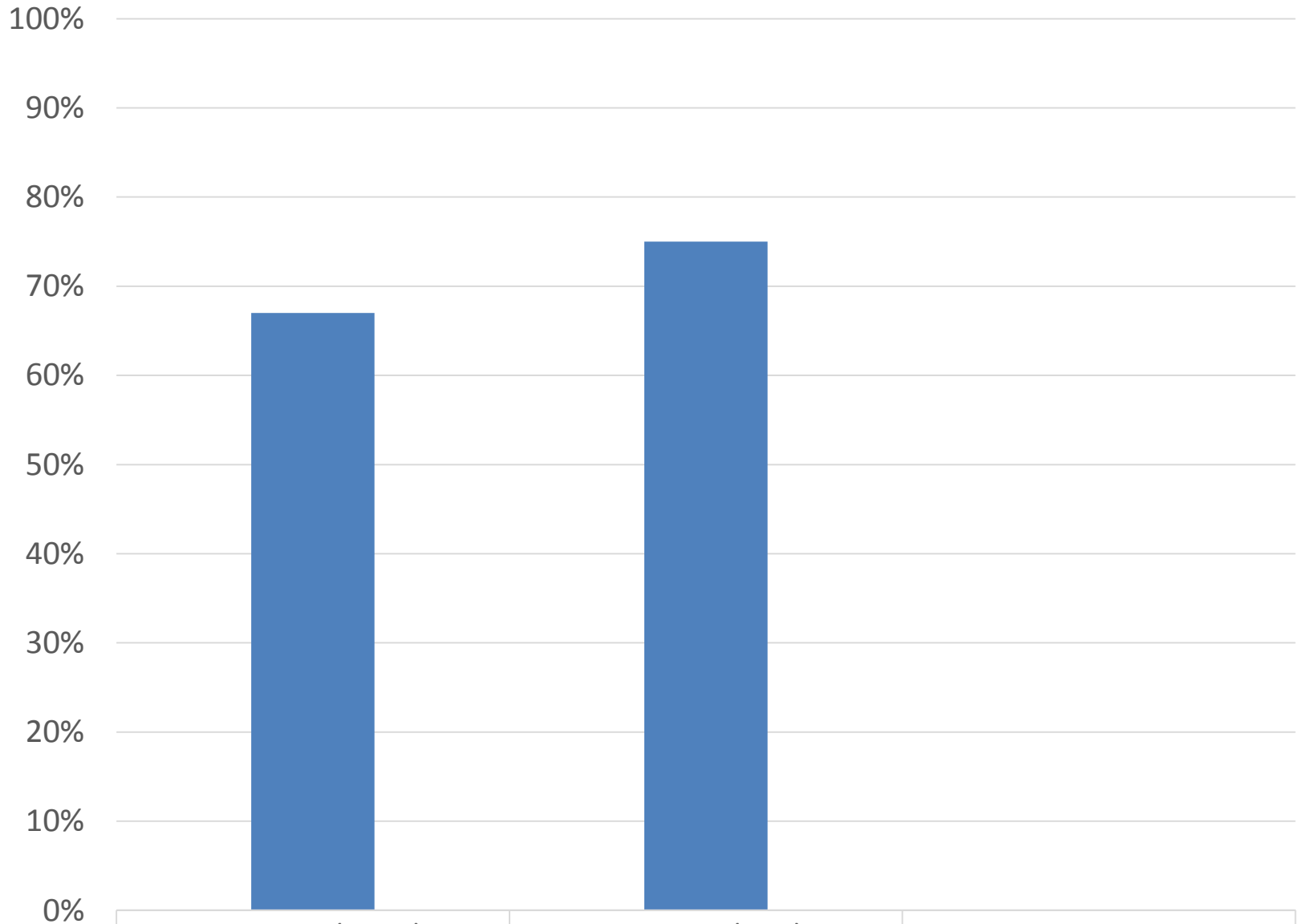
## Secondary SS/History edTPA 2013-14 (Sept 2013 to Aug 2014)



## Secondary SS/History edTPA 2014-15 (Sept 2014 to Aug 2015)



# Secondary Science edTPA Pass Rates



2013-14 (n=12)

2014-15 (n=8)

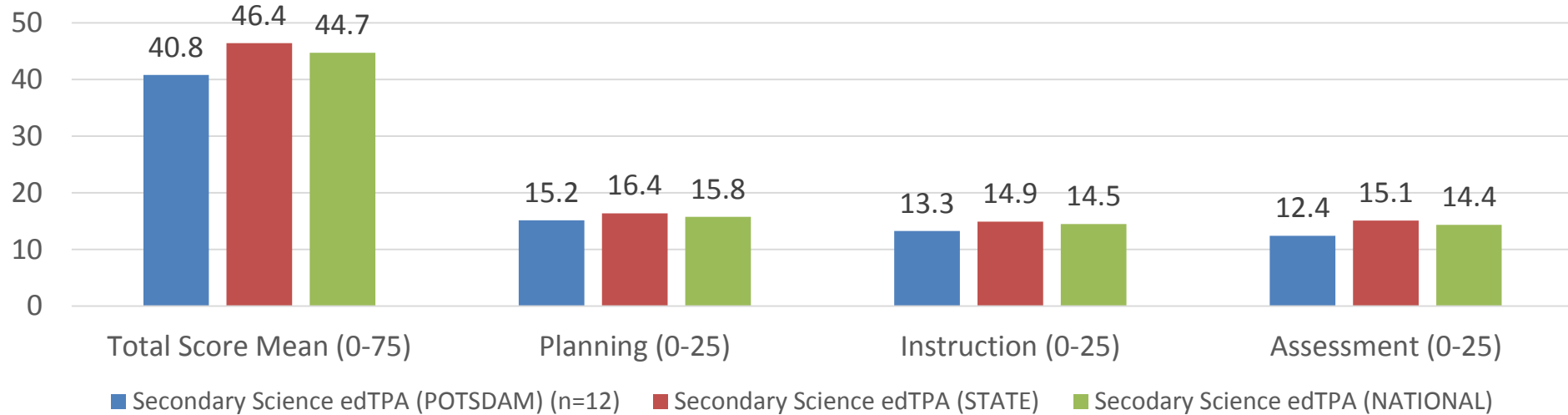
YTD

■ Secondary Science

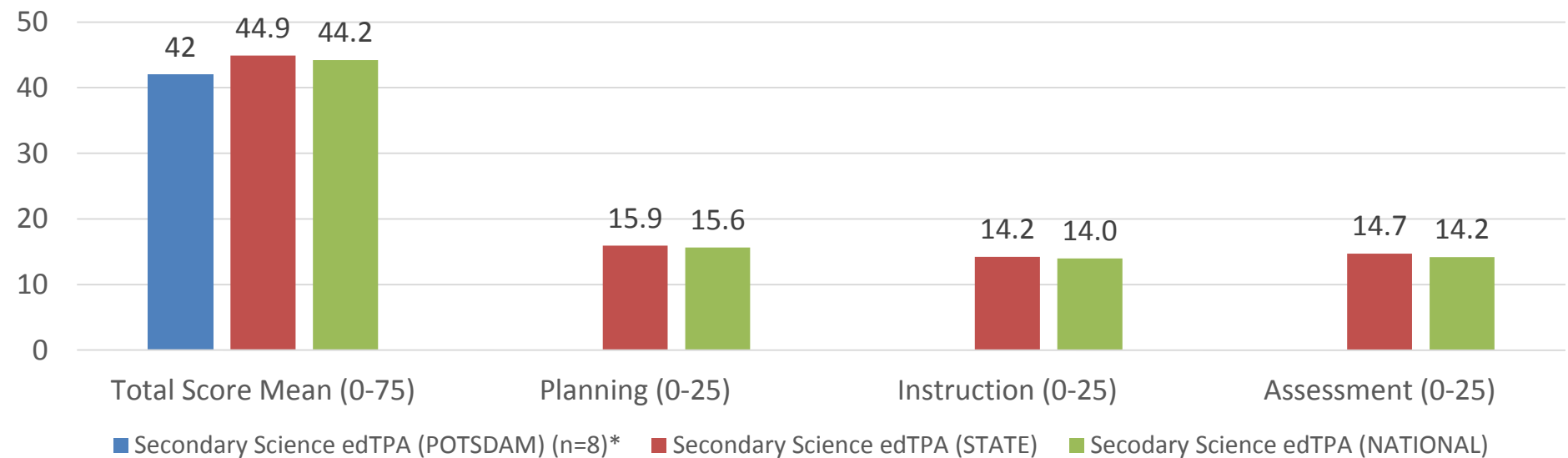
67%

75%

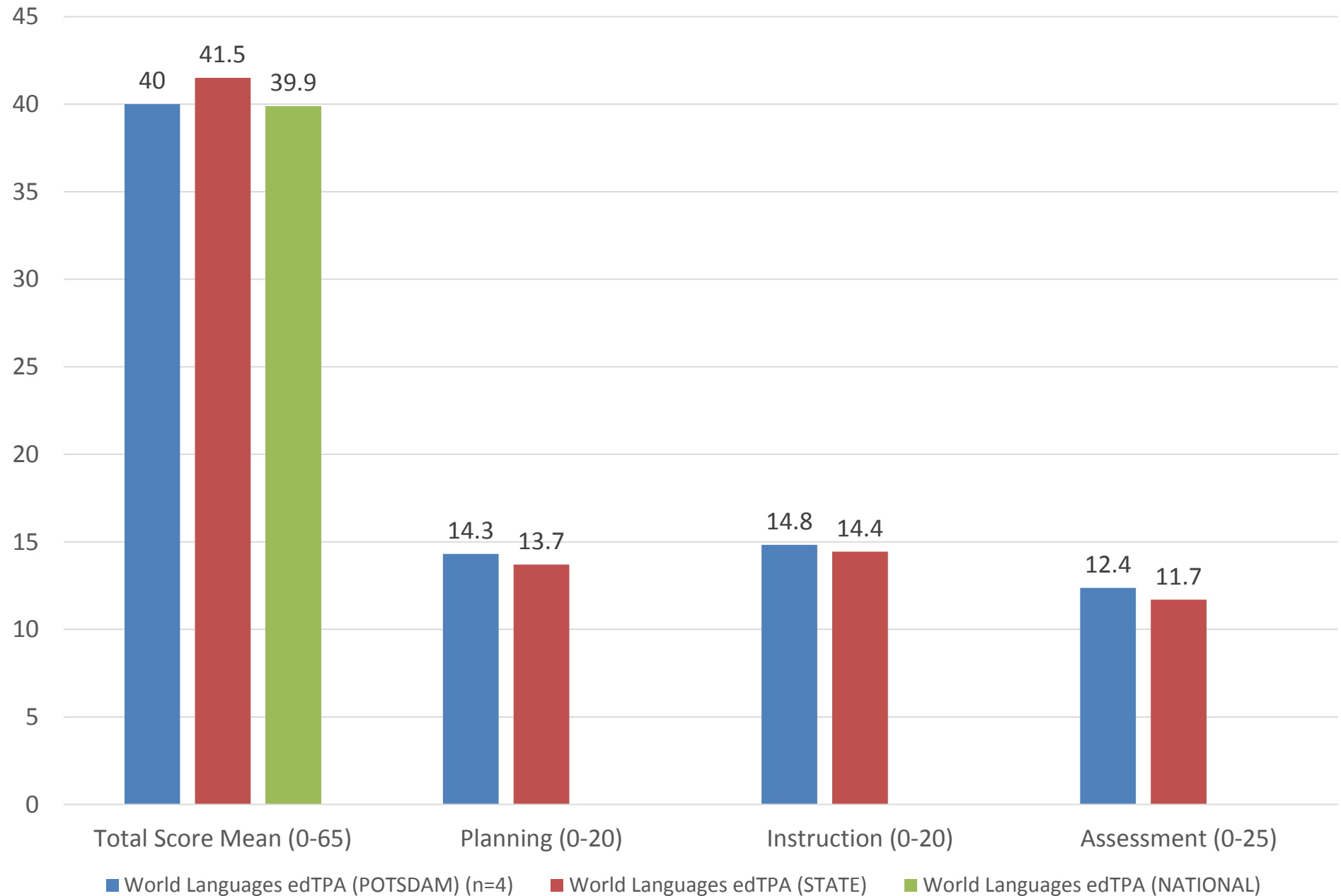
### Secondary Science edTPA 2013-14 (Sept 2013 to Aug 2014)



### Secondary Science edTPA 2014-15 (Sept 2014 to Aug 2015)



# World Languages edTPA 2013-14 (Sept 2013 to Aug 2014)



# Where to find presentation on website?

PowerPoint will be posted to the Office of Institutional Website at:

<http://www.potsdam.edu/offices/ie/assessment/outcomesreports/index.cfm>