

# TOWNHOUSE A

## FIRST FLOOR

A1

Middle of Quad

A2

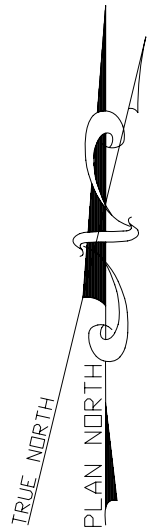
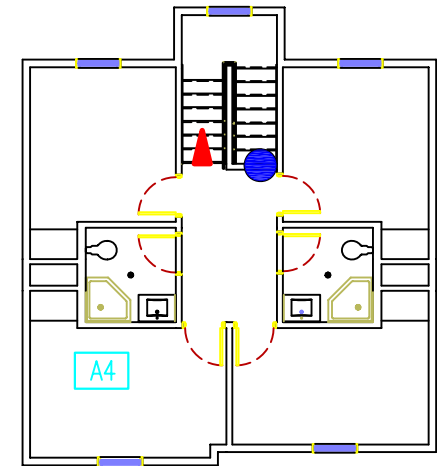
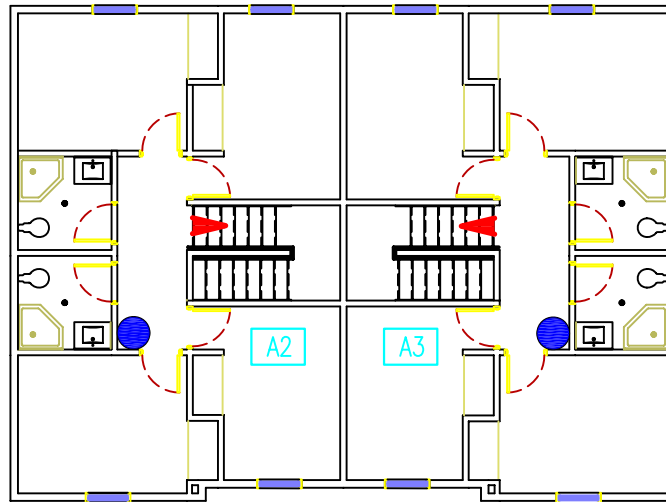
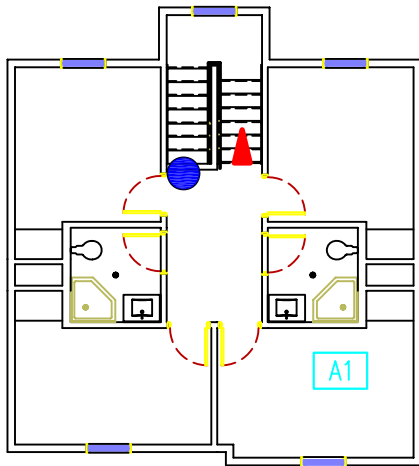
Maxcy Hall West Tunnel Entry






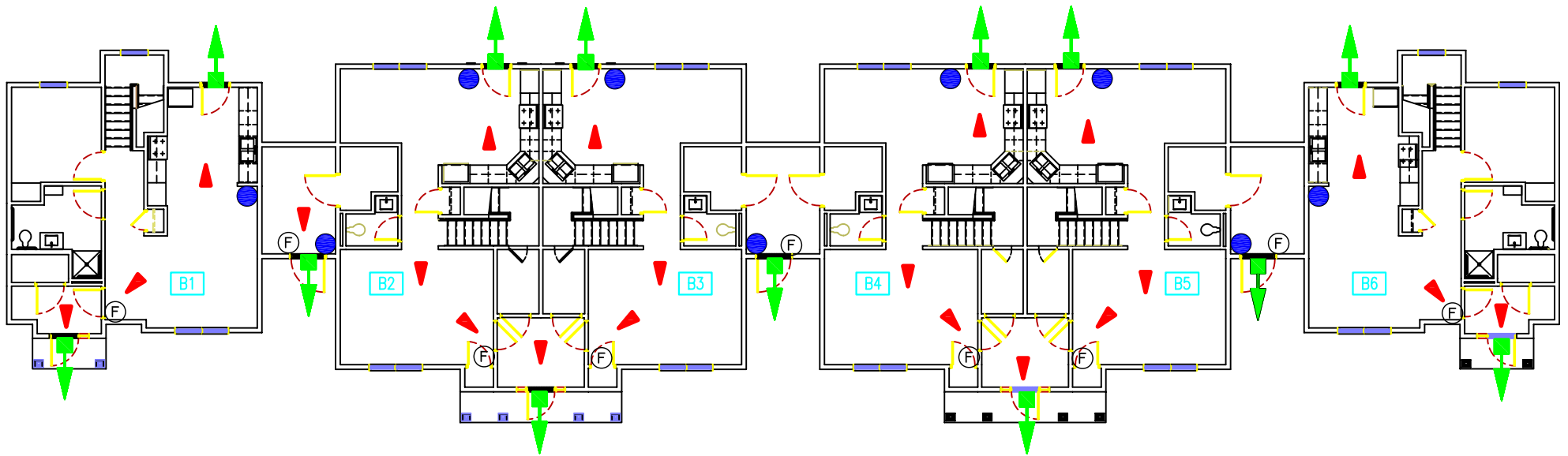
| LEGEND |                            |
|--------|----------------------------|
|        | EXIT                       |
|        | PRIMARY EGRESS PATH        |
|        | FIRE ALARM PULL STATION    |
|        | PORTABLE FIRE EXTINGUISHER |
|        | SECONDARY ASSEMBLY POINT   |
|        | PRIMARY ASSEMBLY POINT     |

# TOWNHOUSE A

## SECOND FLOOR



| LEGEND  |                            |
|---|----------------------------|
|  | PORTABLE FIRE EXTINGUISHER |
|  | PRIMARY EGRESS PATH        |
|  | FIRE ALARM PULL STATION    |



# TOWNHOUSE B

## FIRST FLOOR

A1 Middle of Quad

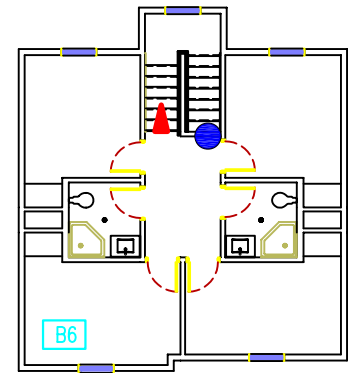
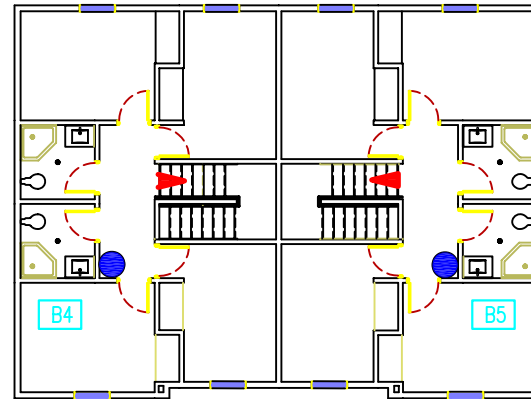
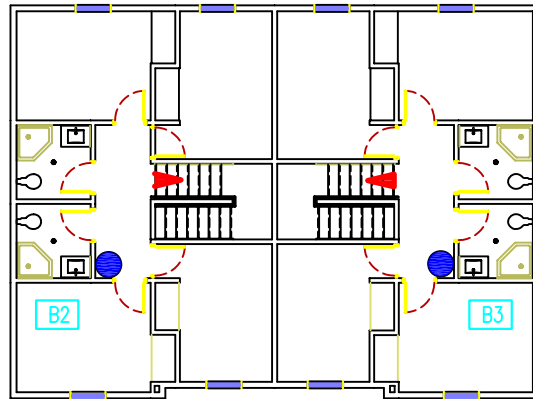
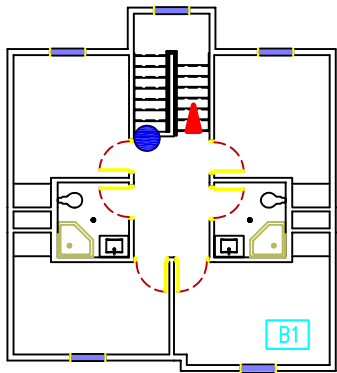
A2 Maxcy Hall West Tunnel Entry






| LEGEND   |                            |
|--|----------------------------|
|  | EXIT                       |
|  | PRIMARY EGRESS PATH        |
|  | FIRE ALARM PULL STATION    |
|  | PORTABLE FIRE EXTINGUISHER |
| <span style="border: 1px solid black; padding: 2px;">A2</span> | SECONDARY ASSEMBLY POINT   |
| <span style="border: 1px solid black; padding: 2px;">A1</span> | PRIMARY ASSEMBLY POINT     |

# TOWNHOUSE B

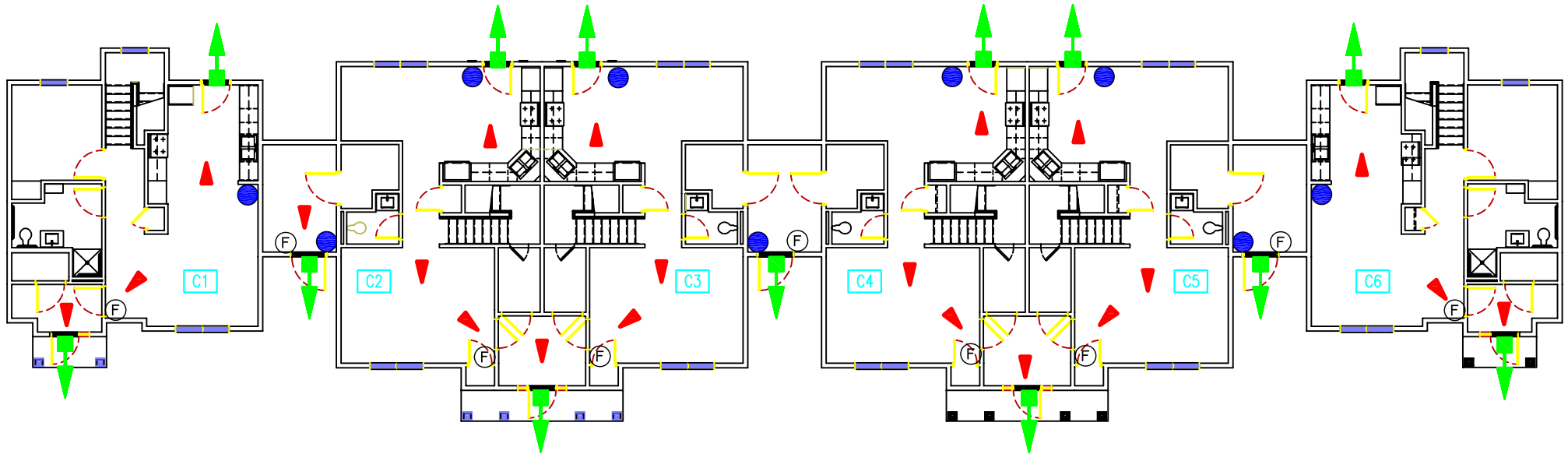
## SECOND FLOOR



| LEGEND  |                            |
|---|----------------------------|
|  | PORTABLE FIRE EXTINGUISHER |
|  | PRIMARY EGRESS PATH        |
|  | FIRE ALARM PULL STATION    |

# TOWNHOUSE C

## FIRST FLOOR



A1

Middle of Quad

A2

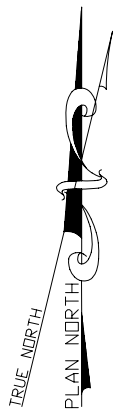
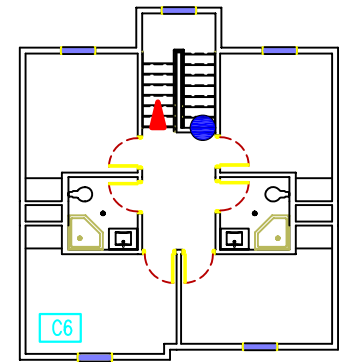
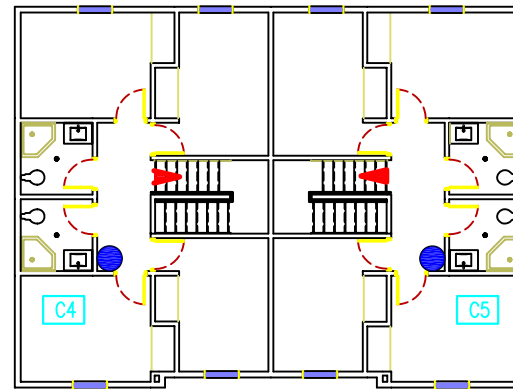
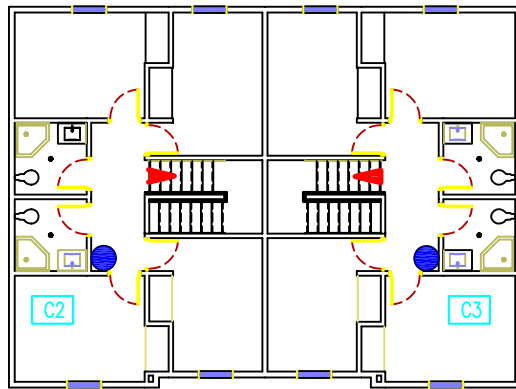
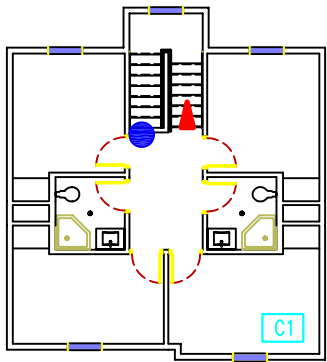
Maxcy Hall West Tunnel Entry






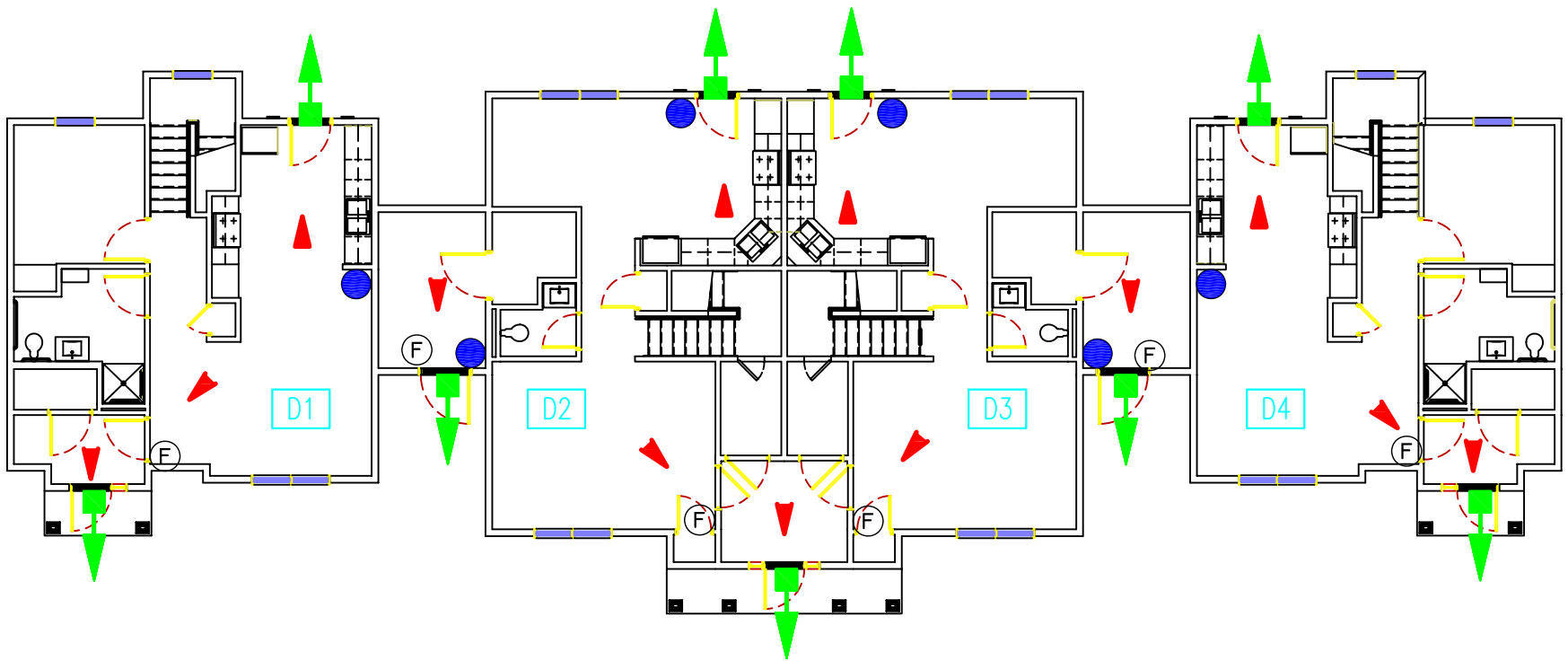
| LEGEND |                            |
|--------|----------------------------|
|        | EXIT                       |
|        | PRIMARY EGRESS PATH        |
|        | FIRE ALARM PULL STATION    |
|        | PORTABLE FIRE EXTINGUISHER |
|        | SECONDARY ASSEMBLY POINT   |
|        | PRIMARY ASSEMBLY POINT     |

# TOWNHOUSE C

## SECOND FLOOR



| LEGEND  |                            |
|---|----------------------------|
|  | PORTABLE FIRE EXTINGUISHER |
|  | PRIMARY EGRESS PATH        |
|  | FIRE ALARM PULL STATION    |



# TOWNHOUSE D

## FIRST FLOOR

A1

Middle of Quad

A2

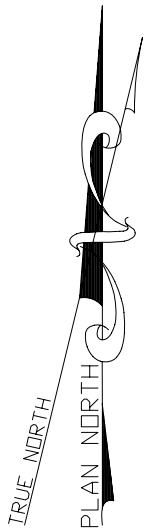
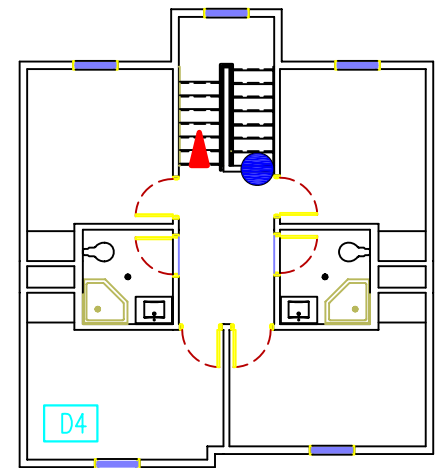
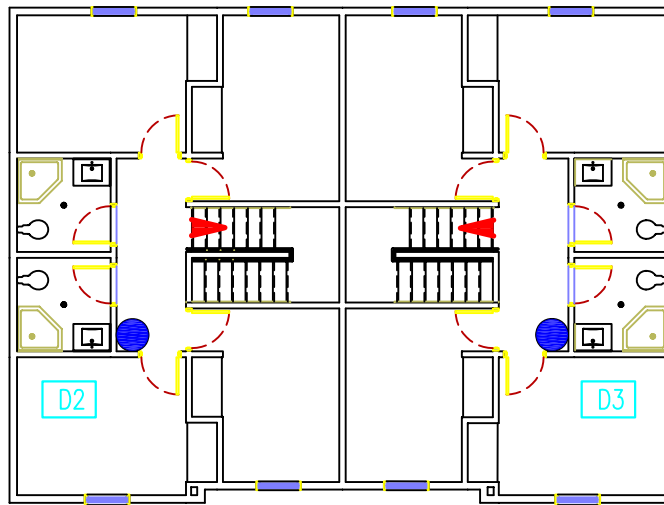
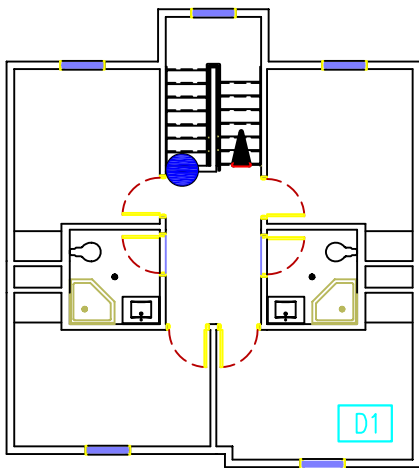
Maxcy Hall West Tunnel Entry






| LEGEND |                            |
|--------|----------------------------|
|        | EXIT                       |
|        | PRIMARY EGRESS PATH        |
|        | PORTABLE FIRE EXTINGUISHER |
|        | FIRE ALARM PULL STATION    |
|        | SECONDARY ASSEMBLY POINT   |
|        | PRIMARY ASSEMBLY POINT     |

# TOWNHOUSE D

## SECOND FLOOR

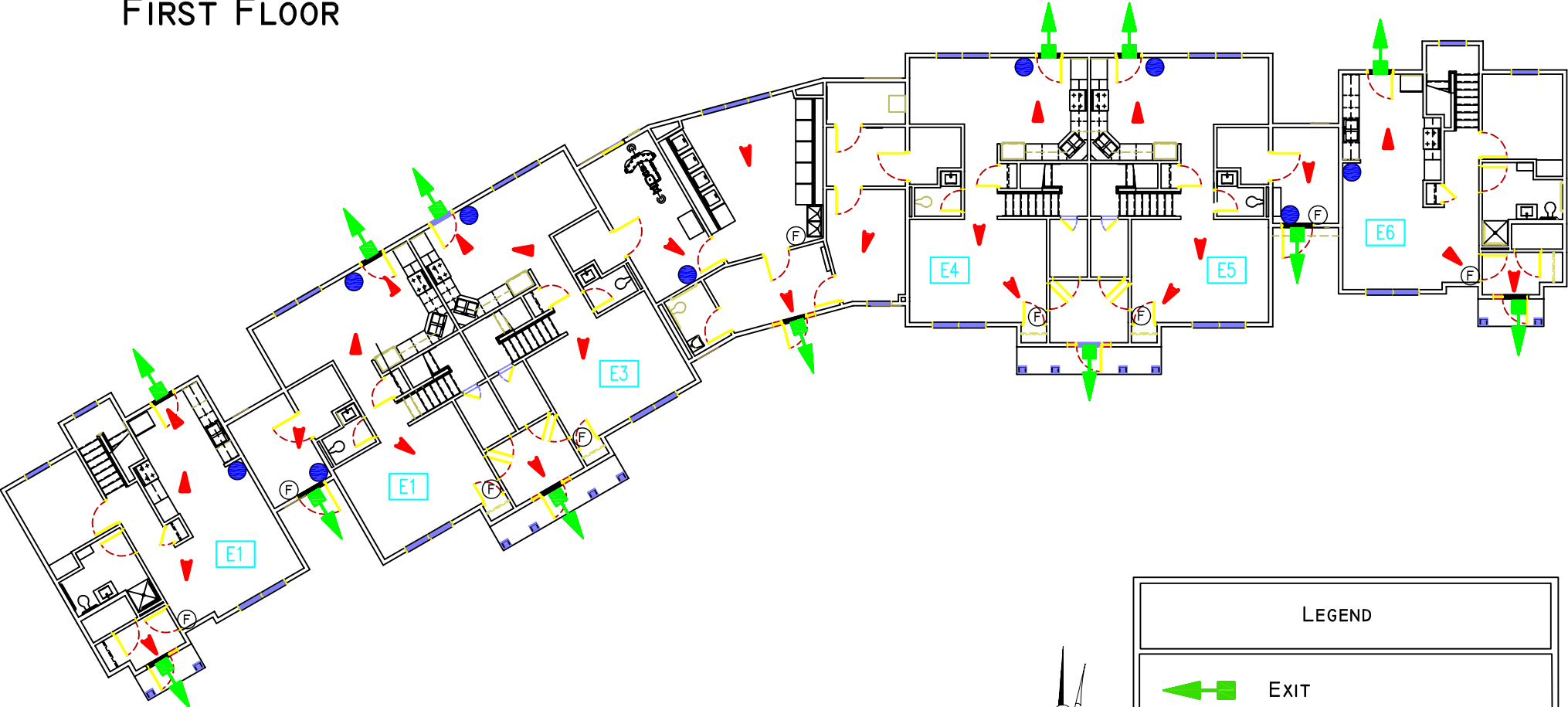


| LEGEND  |                            |
|---|----------------------------|
|  | PORTABLE FIRE EXTINGUISHER |
|  | PRIMARY EGRESS PATH        |
|  | FIRE ALARM PULL STATION    |



# TOWNHOUSE E

## FIRST FLOOR



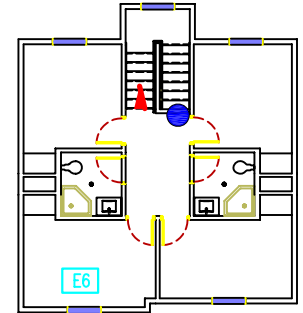
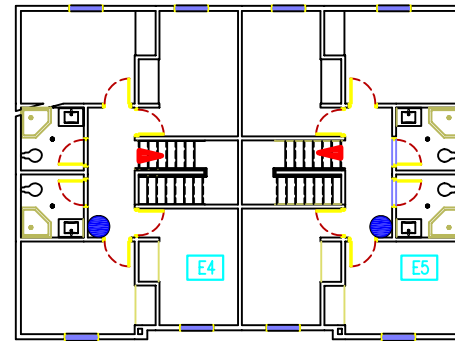
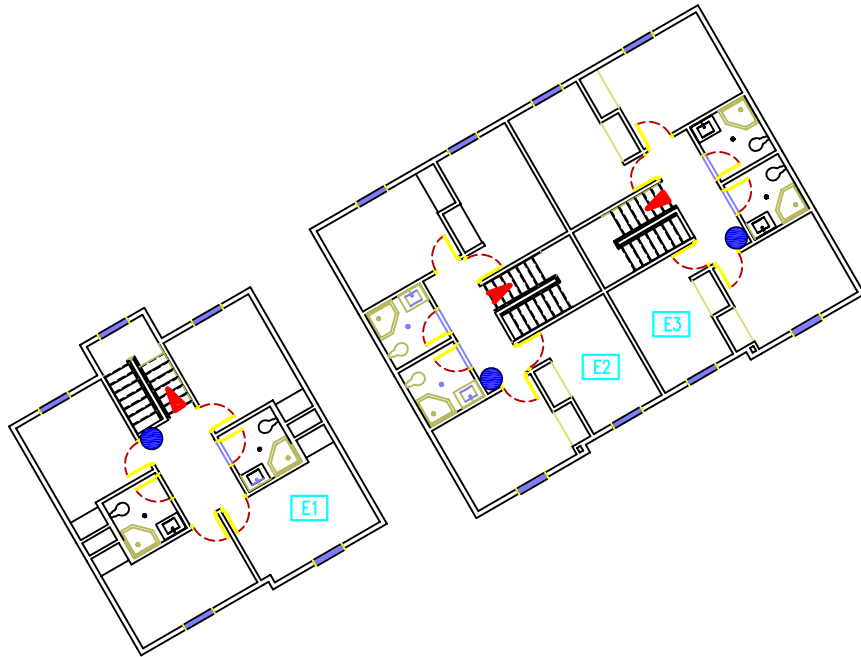
- A1 Middle of Quad
- A2 Maxcy Hall West Tunnel Entry






| LEGEND   |                            |
|--|----------------------------|
|  | EXIT                       |
|  | PRIMARY EGRESS PATH        |
|  | FIRE ALARM PULL STATION    |
|  | PORTABLE FIRE EXTINGUISHER |
| <span style="border: 1px solid black; padding: 2px;">A2</span> | SECONDARY ASSEMBLY POINT   |
| <span style="border: 1px solid black; padding: 2px;">A1</span> | PRIMARY ASSEMBLY POINT     |

# TOWNHOUSE E

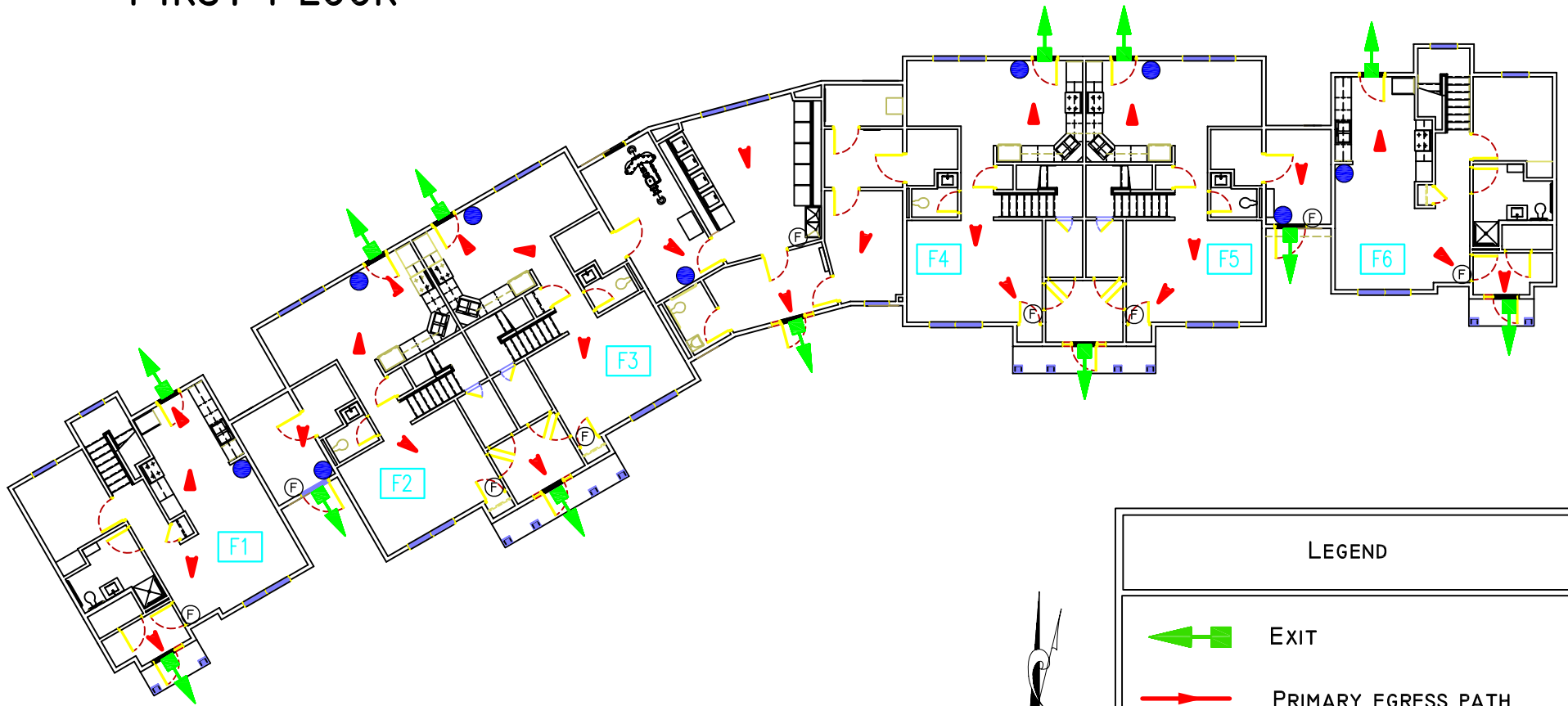
## SECOND FLOOR



| LEGEND  |                            |
|---|----------------------------|
|  | PORTABLE FIRE EXTINGUISHER |
|  | PRIMARY EGRESS PATH        |
|  | FIRE ALARM PULL STATION    |

# TOWNHOUSE F

## FIRST FLOOR



A1

Middle of Quad

A2

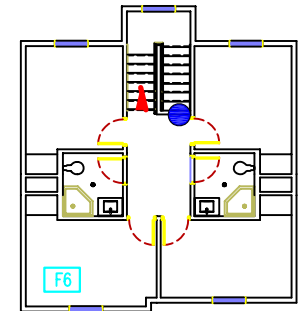
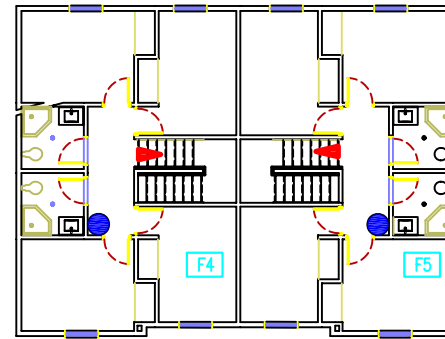
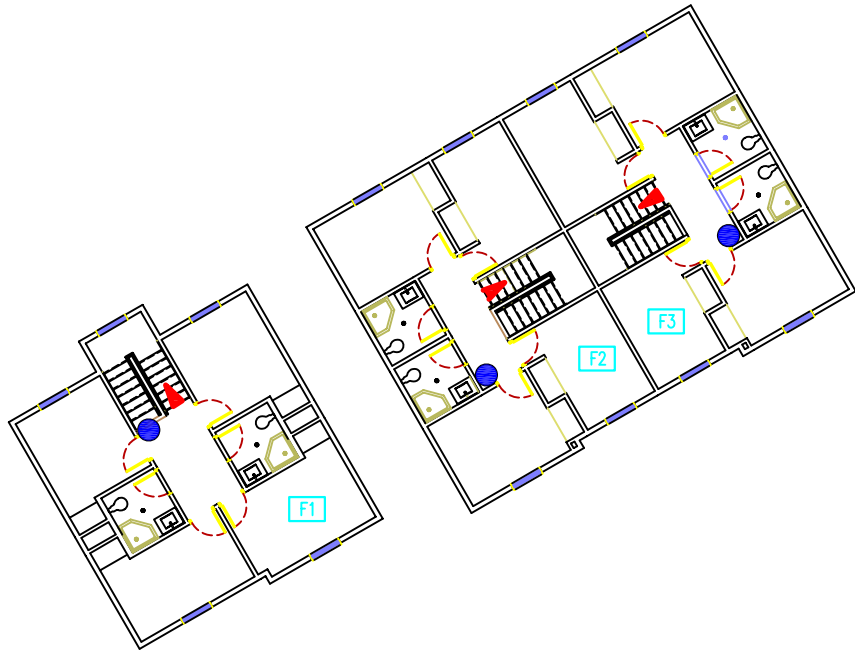
Maxcy Hall West Tunnel Entry






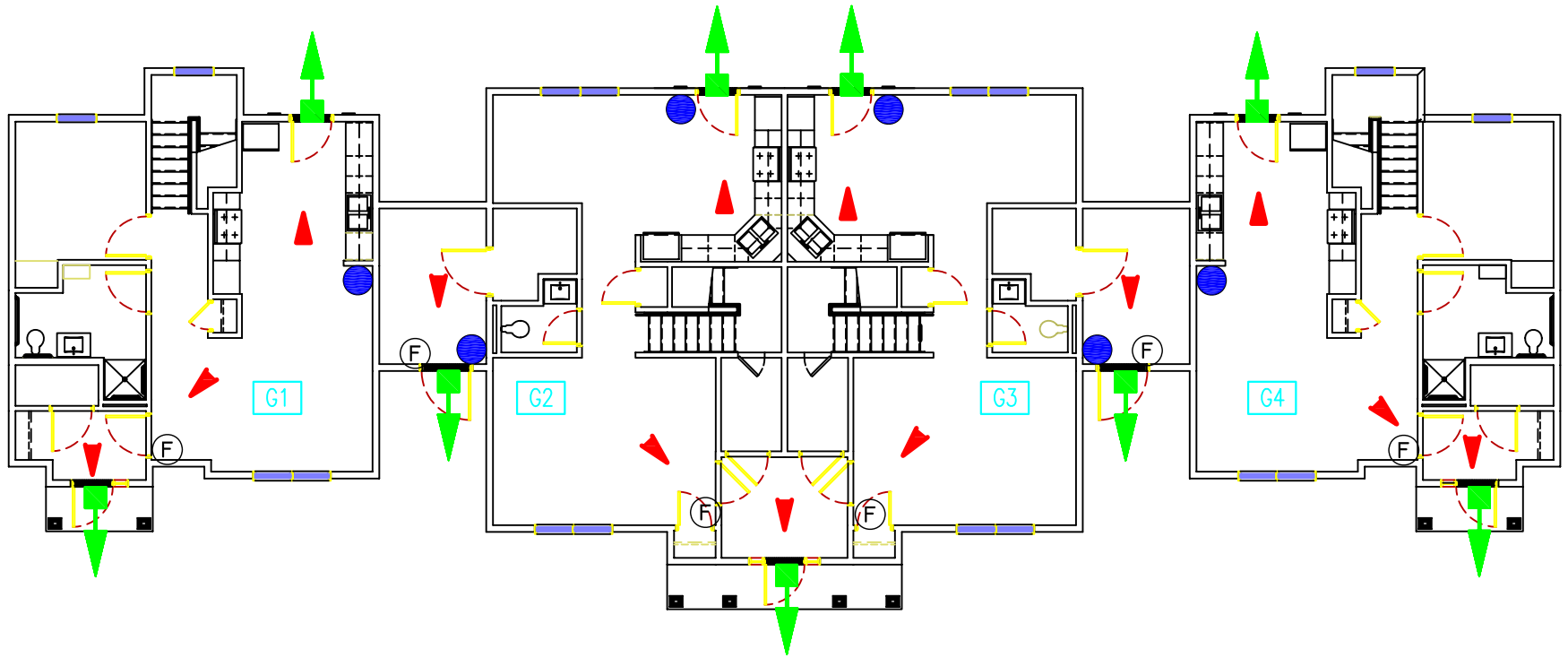
| LEGEND |                            |
|--------|----------------------------|
|        | EXIT                       |
|        | PRIMARY EGRESS PATH        |
|        | FIRE ALARM PULL STATION    |
|        | PORTABLE FIRE EXTINGUISHER |
|        | SECONDARY ASSEMBLY POINT   |
|        | PRIMARY ASSEMBLY POINT     |

# TOWNHOUSE F

## SECOND FLOOR



| LEGEND  |                            |
|---|----------------------------|
|  | PORTABLE FIRE EXTINGUISHER |
|  | PRIMARY EGRESS PATH        |
|  | FIRE ALARM PULL STATION    |



# TOWNHOUSE G

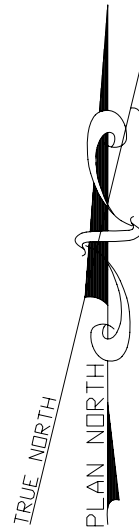
## FIRST FLOOR

A1

Middle of Quad

A2

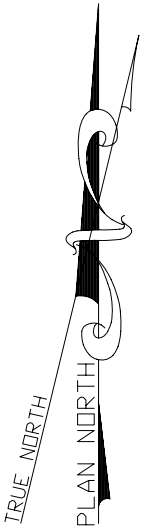
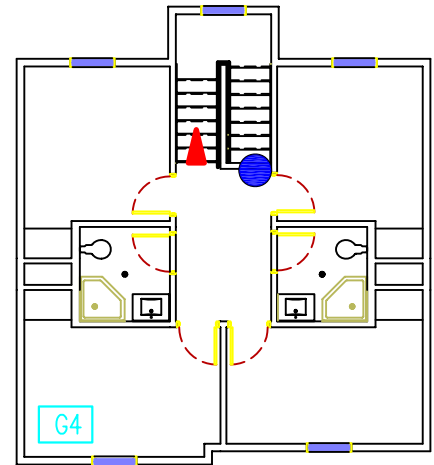
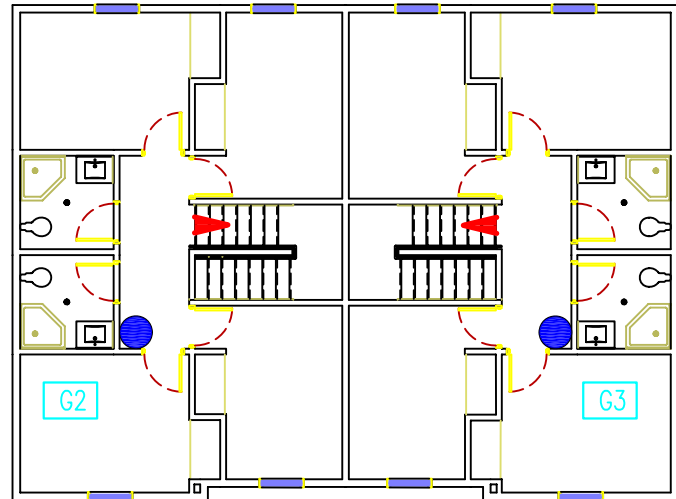
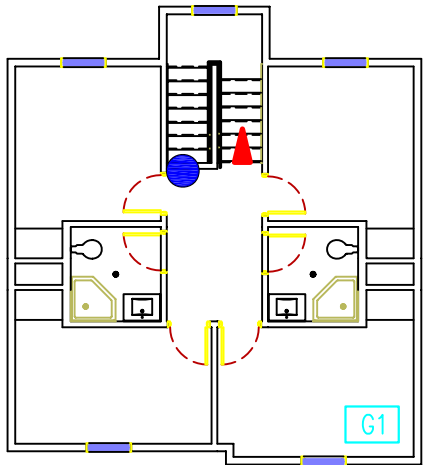
Maxcy Hall West Tunnel Entry






| LEGEND |                            |
|--------|----------------------------|
|        | EXIT                       |
|        | PRIMARY EGRESS PATH        |
|        | FIRE ALARM PULL STATION    |
|        | PORTABLE FIRE EXTINGUISHER |
|        | SECONDARY ASSEMBLY POINT   |
|        | PRIMARY ASSEMBLY POINT     |

# TOWNHOUSE G

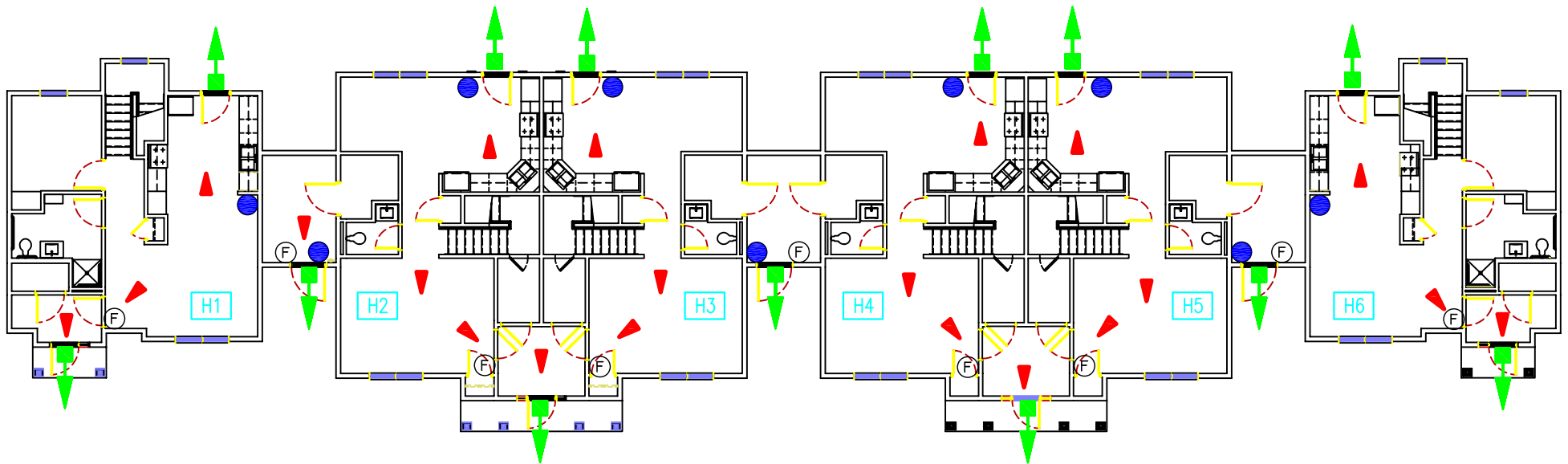
## SECOND FLOOR



| LEGEND  |                            |
|---|----------------------------|
|  | PORTABLE FIRE EXTINGUISHER |
|  | PRIMARY EGRESS PATH        |
|  | FIRE ALARM PULL STATION    |

# TOWNHOUSE H

## FIRST FLOOR



A1

Middle of Quad

A2

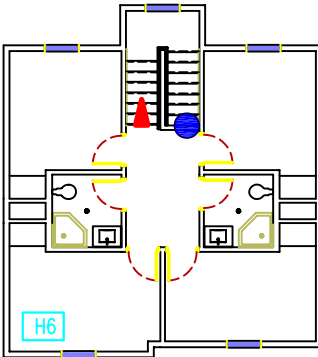
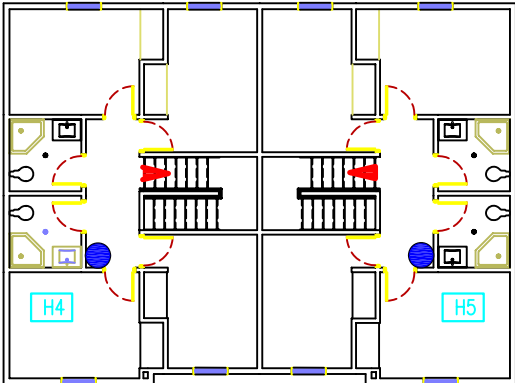
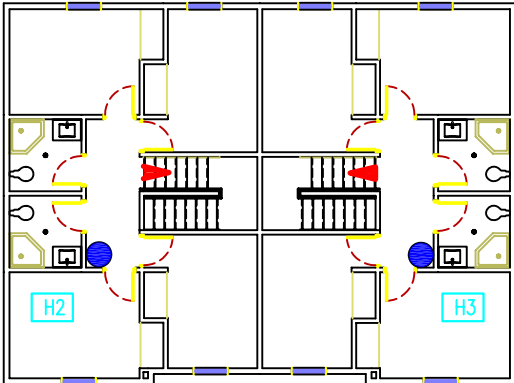
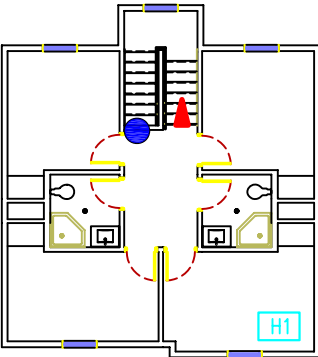
Maxcy Hall West Tunnel Entry






| LEGEND |                            |
|--------|----------------------------|
|        | EXIT                       |
|        | PRIMARY EGRESS PATH        |
|        | FIRE ALARM PULL STATION    |
|        | PORTABLE FIRE EXTINGUISHER |
|        | SECONDARY ASSEMBLY POINT   |
|        | PRIMARY ASSEMBLY POINT     |

# TOWNHOUSE H

## SECOND FLOOR

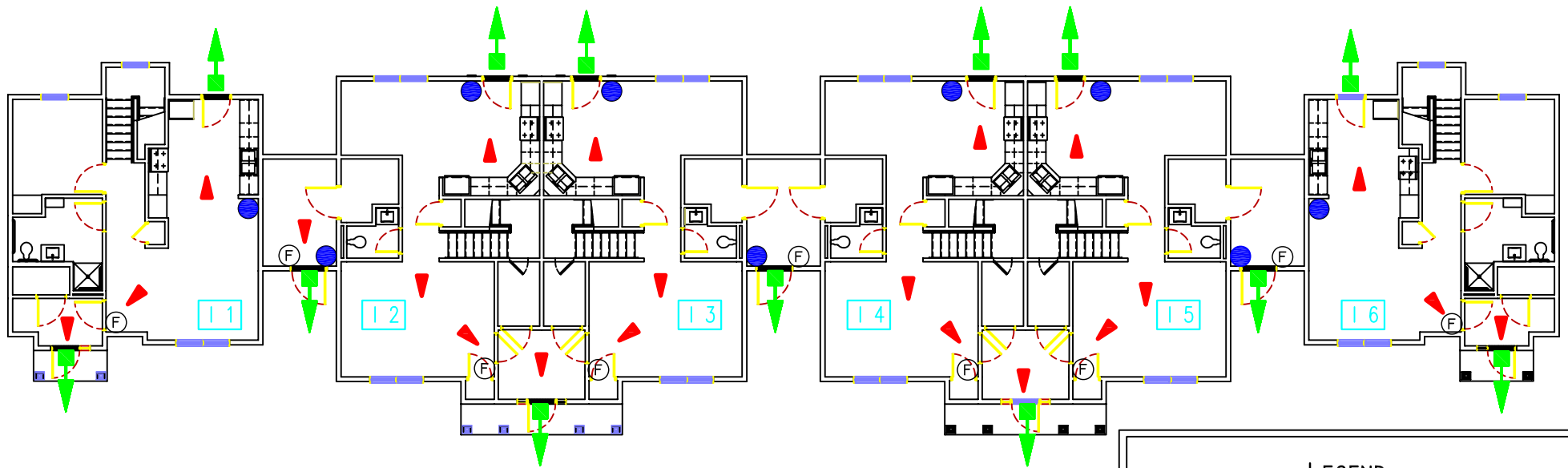


| LEGEND  |                            |
|---|----------------------------|
|  | PORTABLE FIRE EXTINGUISHER |
|  | PRIMARY EGRESS PATH        |
|  | FIRE ALARM PULL STATION    |



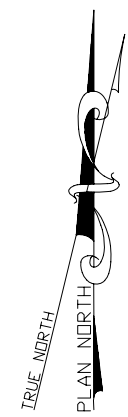
# TOWNHOUSE I







## FIRST FLOOR



A1 Middle of Quad

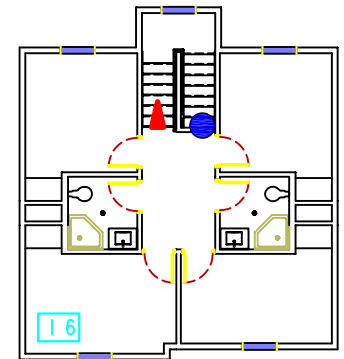
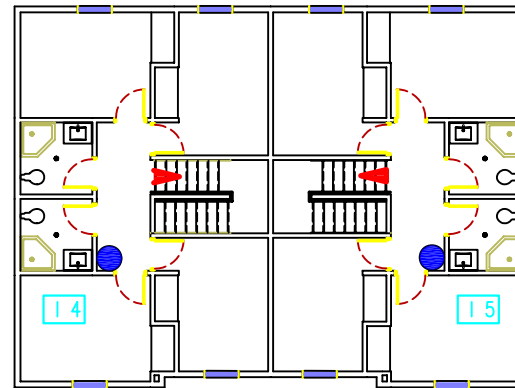
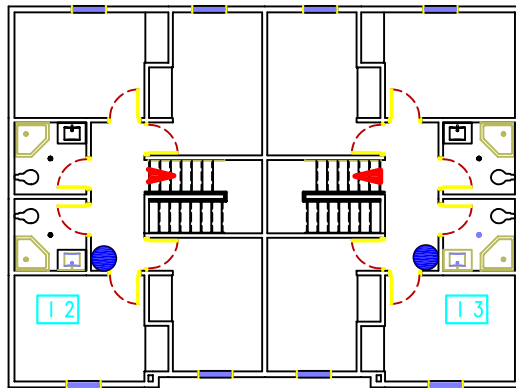
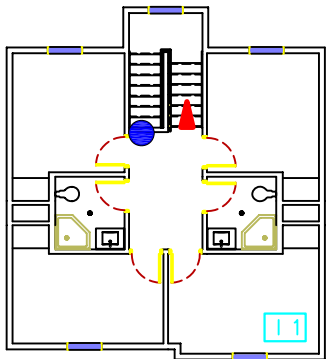
A2 Maxcy Hall West Tunnel Entry






| LEGEND  |                            |
|---|----------------------------|
|  | EXIT                       |
|  | PRIMARY EGRESS PATH        |
|  | FIRE ALARM PULL STATION    |
|  | PORTABLE FIRE EXTINGUISHER |
|  | SECONDARY ASSEMBLY POINT   |
|  | PRIMARY ASSEMBLY POINT     |

# TOWNHOUSE I

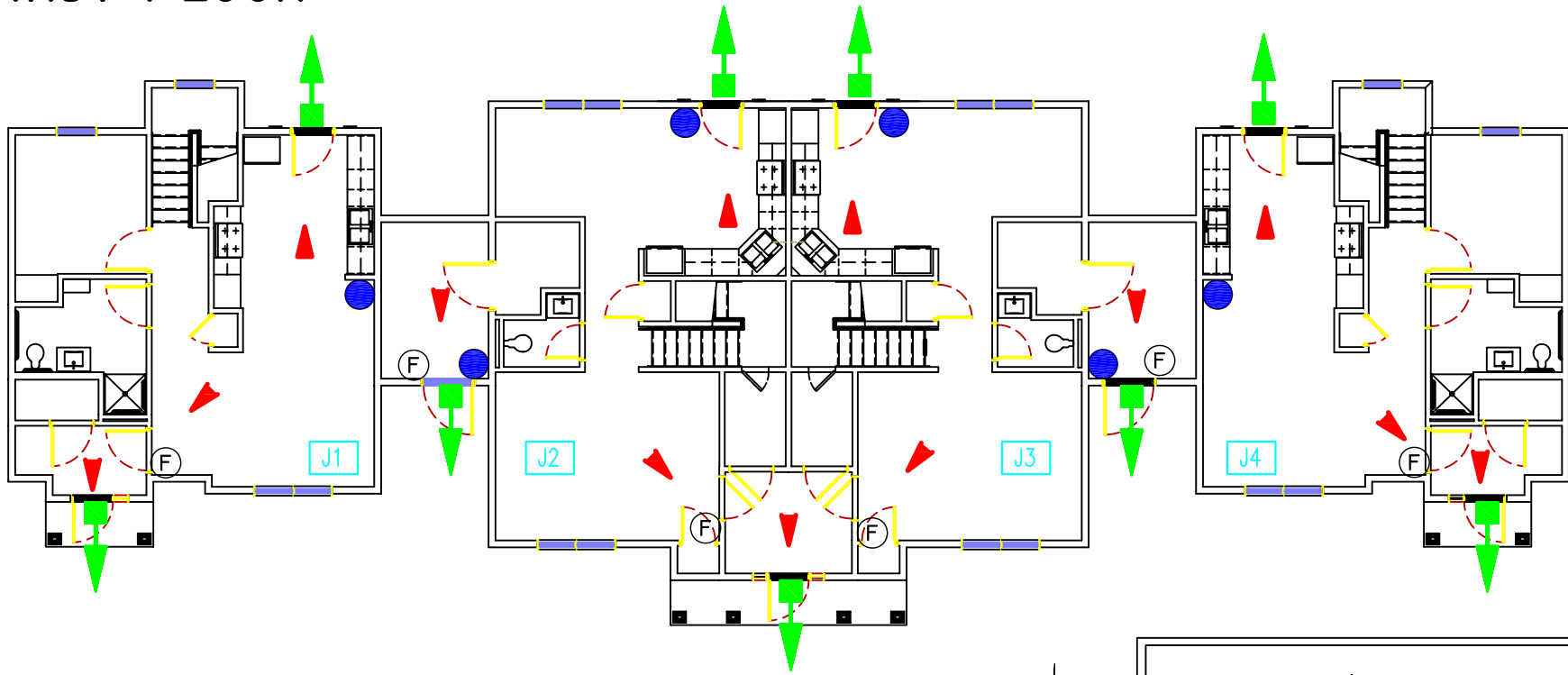
## SECOND FLOOR



| LEGEND  |                            |
|---|----------------------------|
|  | PORTABLE FIRE EXTINGUISHER |
|  | PRIMARY EGRESS PATH        |
|  | FIRE ALARM PULL STATION    |

# TOWNHOUSE J

## FIRST FLOOR



A1

Middle of Quad

A2

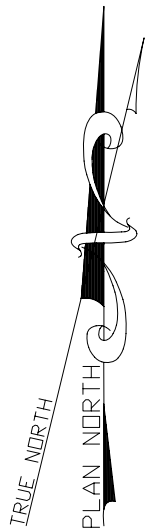
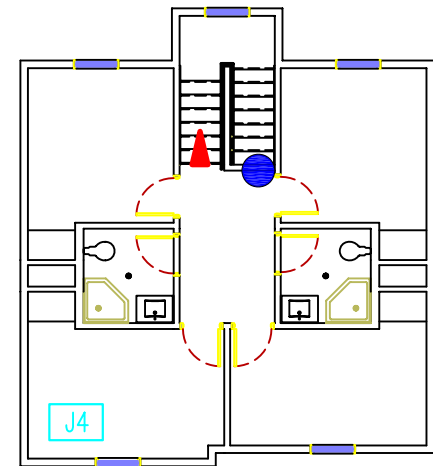
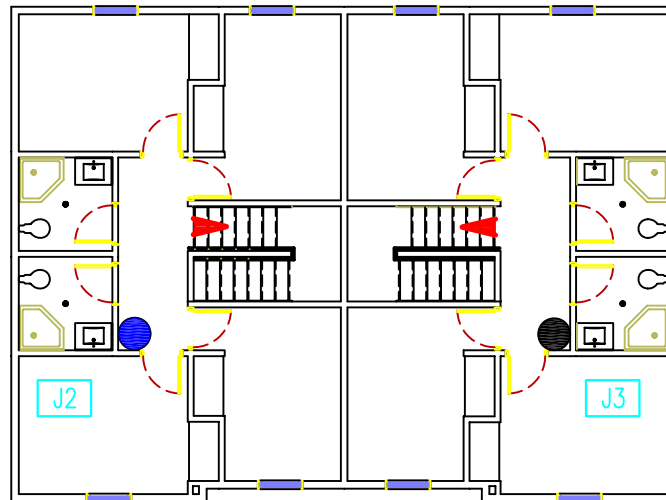
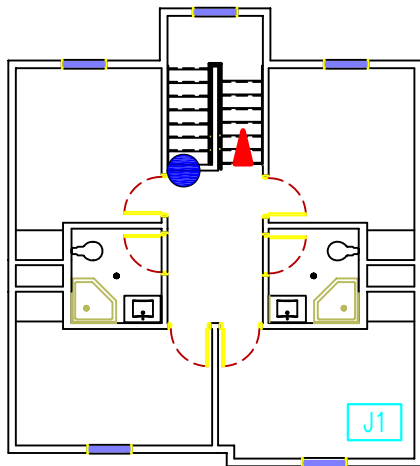
Maxcy Hall West Tunnel Entry






| LEGEND |                            |
|--------|----------------------------|
|        | EXIT                       |
|        | PRIMARY EGRESS PATH        |
|        | FIRE ALARM PULL STATION    |
|        | PORTABLE FIRE EXTINGUISHER |
|        | SECONDARY ASSEMBLY POINT   |
|        | PRIMARY ASSEMBLY POINT     |

# TOWNHOUSE J

## SECOND FLOOR



| LEGEND  |                            |
|---|----------------------------|
|  | PORTABLE FIRE EXTINGUISHER |
|  | PRIMARY EGRESS PATH        |
|  | FIRE ALARM PULL STATION    |